

**Wallplates**  
**Duplex Receptacle Wallplates**



**Features**

- Non-magnetic and corrosion resistant
- Finish is lacquer coated to inhibit oxidation
- Protective plastic film helps to prevent scratches and damage

**Ordering Information**

Description	Color	Catalog Number	UPC
2-Gang, 2-Duplex Openings	Gray	SP82G	883778115264

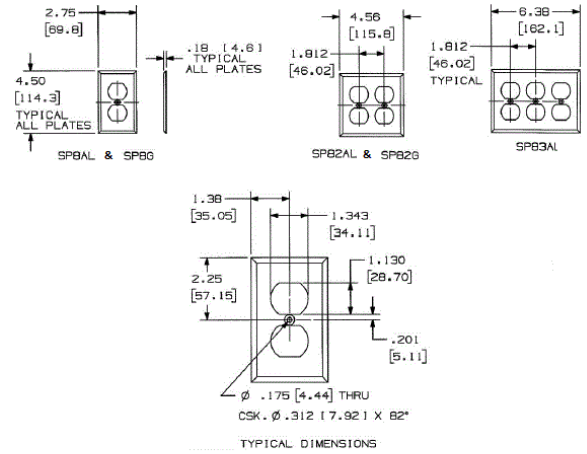


**Listings**

UL Listed  
 CSA Certified

**Specifications**

Plate Material	Steel
Plate Type	2-Gang
Plate Openings	Duplex Receptacle
Mounting Screws	Steel painted, slotted head
Appearance	Powder coat paint



**Online Resources**

Customer Use Drawing  
 eCatalog

Dimensions in Inches (mm)

Hubbell Wiring Device-Kellems • Hubbell Incorporated (Delaware) • 40 Waterview Drive • Shelton, CT 06484

Phone (800) 288-6000 • Fax (800) 255-1031 • Specifications subject to change without notice.

