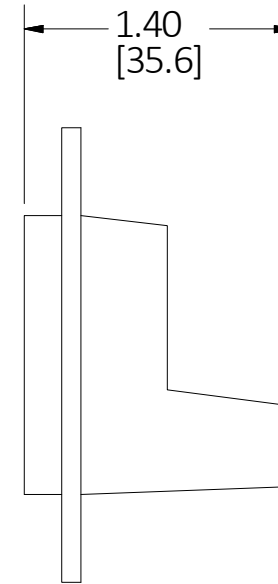
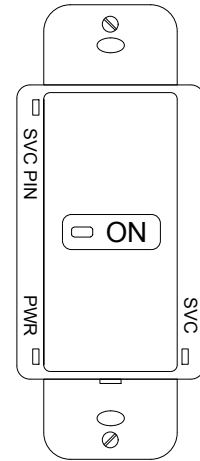
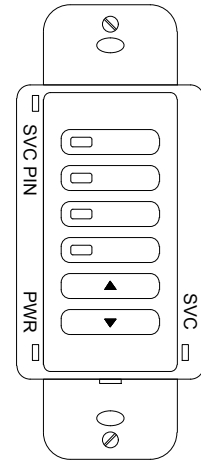
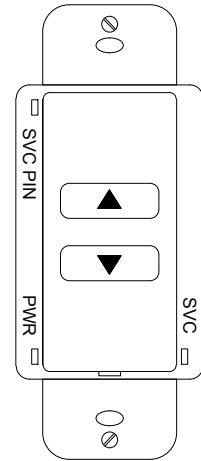
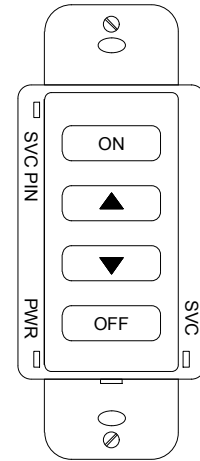
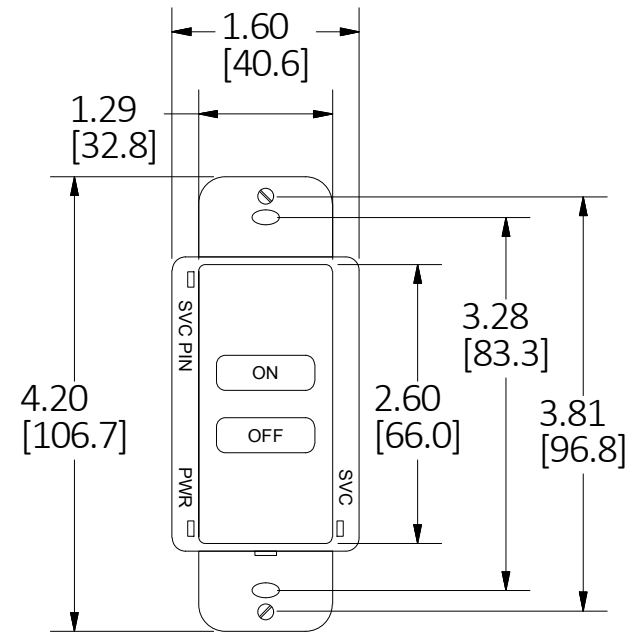


M-13556

1



RCSNFx
SERIES

RCSNRLFx
SERIES

RCSRLx
SERIES

RCSSCx
SERIES

RCSTOx
SERIES

NOTES:

1. LOW VOLTAGE DEVICES: 24 VDC.
POWERED BY ROOM CONTROLLER (CAT.#LLC2RD or LLC2R,
ORDERED SEPARATELY) USING PLENUM RATED RJ45 UTP CABLE
(CAT.# UTPxxOR, ORDERED SEPARATELY).
2. FOR INDOOR USE ONLY,
OPERATING TEMPERATURE: 32°F TO 104°F [0°C TO 40°C];
RELATIVE HUMIDITY (NON-CONDENSING): 0 TO 95%.
3. SWITCHES CAN BE MOUNTED TO SINGLE OR
MULTI-GANG STANDARD WALL BOXES.
4. ALL DIMENSIONS ARE IN INCHES [mm].

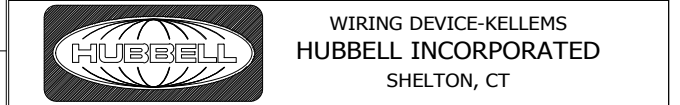
SWITCH TYPE	CATALOG #	DESCRIPTION	COLOR
ON/OFF	RCSNFW	ROOM CONTROLLER SWITCH, ON-OFF, WH	WHITE
ON/RAISE/LOWER/ OFF	RCSNRLFV	ROOM CONTROLLER SWITCH, ON-RAISE-LOWER-OFF, WH	WHITE
	RCSNRLFV	ROOM CONTROLLER SWITCH, ON-RAISE-LOWER-OFF, IV	IVORY
RAISE/LOWER	RCSRLV	ROOM CONTROLLER SWITCH, RAISE-LOWER, WH	WHITE
SCENE	RCSSCW	ROOM CONTROLLER SWITCH, SCENE, WH	WHITE
TIMED ON	RCSTOV	ROOM CONTROLLER SWITCH, TIMED ON, WH	WHITE

LIST OF PARTS		
DESCRIPTION	MATERIAL	FINISH
BASE	THERMOPLASTIC	BLACK
COVER	THERMOPLASTIC	COLOR PER CAT.# SEE TABLE.
BUTTON	THERMOPLASTIC	COLOR PER CAT.# SEE TABLE.

1	NEW RELEASE PER DCN #22883	D.LI	2/7/17
REV	DESCRIPTION	APP	DATE

THE DESIGN AND DIMENSIONS OF THE PRODUCT SHOWN ON THIS DRAWING ARE SUBJECT TO CHANGE WITHOUT NOTICE. DIMENSIONS ARE IN INCHES [mm].

TITLE
ROOM CONTROLLER SPECIALTY SWITCH



TOLERANCES UNLESS OTHERWISE SPECIFIED .XX = ±.01 .XXX = ±.005 ANGLE TOL. ±2'	DR. BY D.LI	SCALE NONE
CHK. BY	DATE	2/7/2017