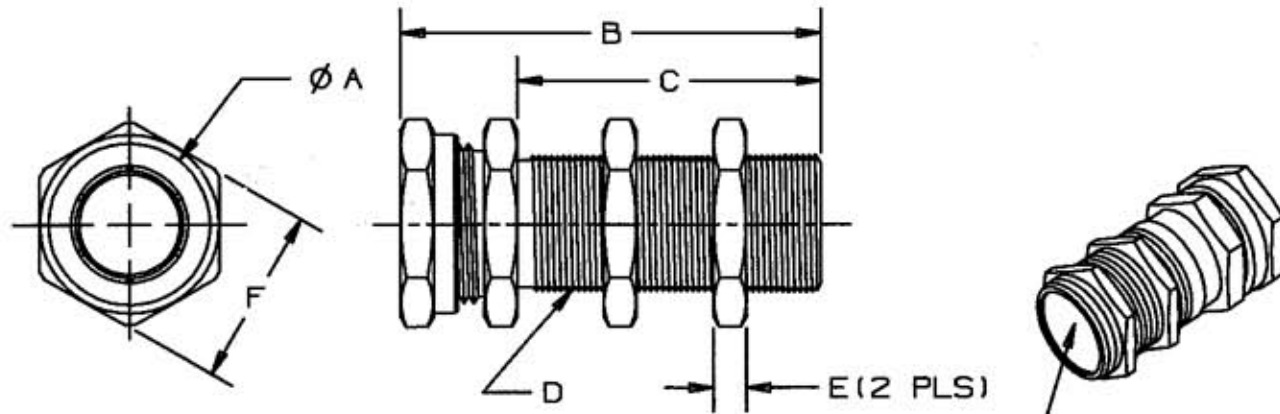


M-8771 2

HUBBELL MODEL	A	B	C	D	E	F	WEIGHT (OZ.)	BODY MATERIAL	BODY FINISH
SM8	8.18 (0.32)	32.4 (1.28)	17.5 (0.69)	M12x1	3.85 (0.15)	16.9 (0.67)	1.20	BRASS	NICKEL
SM12	12.1 (0.48)	34.0 (1.34)	19.5 (0.77)	M16x1	4.01 (0.16)	21.8 (0.86)	1.60	BRASS	NICKEL
SM18	18.1 (0.71)	35.3 (1.39)	20.8 (0.82)	M24x1.5	4.83 (0.19)	30.0 (1.18)	4.30	BRASS	NICKEL
SM30	30.1 (1.19)	35.6 (1.40)	20.6 (0.81)	M36x1.5	5.84 (0.23)	41.0 (1.61)	4.90	BRASS	NICKEL
SM8D	8.18	32.4	17.5	M12x1	3.85	16.9	-	DELTRIN	-



FOR SMXXD (DELTRIN) CAT. NO.'S, INDICATED END IS CLOSED.

LIST OF PARTS

DESCRIPTION	MATERIAL	FINISH
BODY	SEE TABLE	-
NUTS	BRASS	NICKEL
LOCKING FERRULE	POLYPROPYLENE	-

SYM	REVISIONS	APP	DATE
2	10/8/04 ADDED CAT. # SM8D, "BODY MATERIAL" COLUMN, AND "BODY FINISH" COLUMN TO TABLE; ADDED CALL-OUT "FOR SMXXD (DELTRIN) CAT. NO.'S, INDICATED END IS CLOSED."; IN TABLE, COLUMN "F" WAS "E"; IN LIST OF PARTS, "SEE TABLE" WAS "BRASS" AND REMOVED "NICKEL" FROM BODY FINISH PER DCN #12039. JMN	JPP	10/8/04
1	4/29/02 "X" REMOVED; LAST "X" REVISION WAS X-O. RELEASED FOR PRODUCTION PER DCN #9320. GDR MJL	MJL	4/29/02

THE DESIGN AND DIMENSIONS OF THE PRODUCT SHOWN ON THIS DRAWING ARE SUBJECT TO CHANGE WITHOUT NOTICE

TITLE
QUICKTUBE MOUNTS

TOLERANCES UNLESS OTHERWISE SPECIFIED FRACTIONS ±1/64 DECIMALS ±.005 ANGLES ±2°	WIRING DEVICE-KELLEMS HUBBELL INCORPORATED BRIDGEPORT, CT	
	DR. BY GDR	APP. BY MJL
	TR. BY	SCALE NONE
	CHK'D BY	DATE 4/29/02

UNLESS OTHERWISE SPECIFIED DIMENSIONS ARE IN mm (INCHES)

DIMENSION SHEET FOR CAT. NO. M-8771
 REPAIRABLE NON-REPAIRABLE B
 SEE CHART
 M-8771
 2