

*"Buy American Compliant/ U.S. Government Procurement-Eligible"*



# Ground Fault Receptacles



**Hubbell Manufacturing Facility, Newtown, CT**

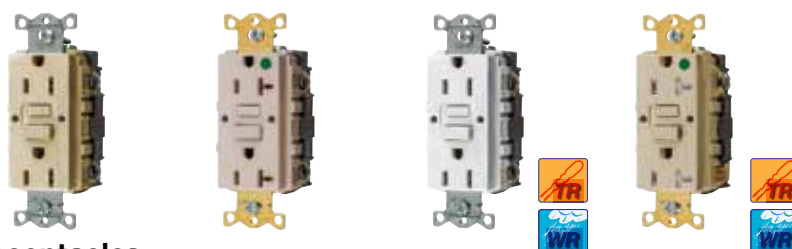
## U.S. Government Procurement Eligibility Guidelines

Hubbell recognizes that sales to government end-users are subject to a number of unique requirements. For example, several U.S. laws contain restrictions on the origin of products that may be purchased by the U.S. Government. Most prominent among these is the Buy American Act of 1933 (“BAA”), which provides a competitive advantage to domestically-produced goods sold in the Federal Government procurement market. Another of the relevant laws, the Trade Agreements Act of 1979 (“TAA”), permits the President to waive the BAA and other discriminatory provisions for eligible products from countries that have signed an international agreement with the United States, or that meet certain other criteria, such as being produced in a least developed country. More recently, the American Recovery and Reinvestment Act of 2009 (“ARRA”), which was enacted to provide funding

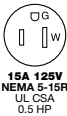

for numerous large-scale federal procurements and state and local projects, also contains certain “Buy American” restrictions which prohibit the use of ARRA funds for any project involving the construction, alteration, maintenance, or repair of a public building or public work unless all of the iron, steel and manufactured goods used in the project are produced in the United States.

This can be a confusing area to navigate. Hubbell understands and has devoted the time and resources necessary to be able to provide its customers with products that meet one or more the tests involved. The products identified in this brochure are examples of Hubbell’s commitment to providing its customers with U.S. government procurement- eligible products. If you have any questions about a specific product, or if your job or order requires a certification, please contact Hubbell Customer Service for assistance.

Commercial grade and hospital grade ground fault receptacles are assembled in the United States. With or without tamper-resistant shutters, Hubbell’s high quality ground fault receptacles are UL 943 listed and “Buy American Compliant/U.S. Government Procurement-Eligible”.



### AUTOGUARD® Commercial GFCI Receptacles

Rating	Color	Standard	Hospital Grade ●	Standard	Hospital Grade ●
	Ivory	<b>GFRST15IU</b>	<b>GFRST82IU</b>	<b>GFTWRST15IU</b>	<b>GFTWRST82IU</b>
	Light Almond	<b>GFRST15LAU</b>	<b>GFRST82LAU</b>	<b>GFTWRST15LAU</b>	<b>GFTWRST82LAU</b>
	White	<b>GFRST15WU</b>	<b>GFRST82WU</b>	<b>GFTWRST15WU</b>	<b>GFTWRST82WU</b>
	Other Colors*	<b>GFRST15*U</b>	<b>GFRST82*U</b>	<b>GFTWRST15*U</b>	<b>GFTWRST82*U</b>
	Ivory	<b>GFRST20IU</b>	<b>GFRST83IU</b>	<b>GFTWRST20IU</b>	<b>GFTWRST83IU</b>
	Light Almond	<b>GFRST20LAU</b>	<b>GFRST83LAU</b>	<b>GFTWRST20LAU</b>	<b>GFTWRST83LAU</b>
	White	<b>GFRST20WU</b>	<b>GFRST83WU</b>	<b>GFTWRST20WU</b>	<b>GFTWRST83WU</b>
	Other Colors*	<b>GFRST20*U</b>	<b>GFRST83*U</b>	<b>GFTWRST20*U</b>	<b>GFTWRST83*U</b>

\*Other colors include the following. To order, please replace \* with the color code in parentheses. Almond (AL), Black (BK), Brown (No Suffix), Gray (GY) and Red (R).



**GFP15M**

### IP21 SUITABILITY

### Multiple Outlet Portable GFCI

Description	Rating	Receptacles	Plug	Catalog Number
4 Outlet, Manual Set, yellow	15A, 120V AC	2-Duplex NEMA 5-15R	NEMA 5-15P	<b>GFP15M</b>
4 Outlet, Manual Set, yellow	20A, 120V AC	2-Duplex NEMA 5-20R	NEMA 5-20P	<b>GFP20M</b>



Visit [www.hubbell-wiring.com](http://www.hubbell-wiring.com) for complete product listing

Comprehensive country of origin catalog number list is available from Hubbell Customer Service or your local Hubbell Territory Manager



# Duplex Receptacles

## HBL® Extra Heavy Duty Duplex Receptacles

Description	Color	15A 125V	20A 125V
Hospital Grade ●, flush, thermoplastic polyester face, back and side wired.	Ivory Light Almond White	<b>HBL8200I</b> <b>HBL8200LA</b> <b>HBL8200W</b>	<b>HBL8300I</b> <b>HBL8300LA</b> <b>HBL8300W</b>
Hospital Grade ●, Tamper-Resistant receptacle with wire leads. Complies with requirements of NEC® article 517-18(c).	Ivory Light Almond White	<b>HBL8200SGIA</b> <b>HBL8200SGLA</b> <b>HBL8200SGWA</b>	<b>HBL8300SGIA</b> <b>HBL8300SGLA</b> <b>HBL8300SGWA</b>
Specification Grade, flush, nylon face, back and side wired.	Ivory White	<b>HBL5262I</b> <b>HBL5262W</b>	<b>HBL5362I</b> <b>HBL5362W</b>
Specification Grade, Tamper-Resistant, flush, nylon face, back and side wired.	Ivory Light Almond White	<b>HBL5262ITR</b> <b>HBL5262LATR</b> <b>HBL5262WTR</b>	<b>HBL5362ITR</b> <b>HBL5362LATR</b> <b>HBL5362WTR</b>
Specification Grade, Weather Resistant, flush, nylon face, back and side wired.	Ivory White	<b>HBL5262IWRA</b> <b>HBL5262WWRA</b>	<b>HBL5362IWRA</b> <b>HBL5362WWRA</b>



## Extra Heavy Duty SNAPConnect® Duplex Receptacles

Description	Color	15A 125V	20A 125V
Hospital Grade ●, smooth nylon face, modular receptacle which requires pigtailed connector below.	Ivory Light Almond White	<b>SNAP8200INA</b> <b>SNAP8200LANA</b> <b>SNAP8200WNA</b>	<b>SNAP8300INA</b> <b>SNAP8300LANA</b> <b>SNAP8300WNA</b>
Hospital Grade ●, Tamper-Resistant, smooth nylon face, modular receptacle which requires pigtailed connector below.	Ivory Light Almond White	<b>SNAP8200ITRA</b> <b>SNAP8200LATRA</b> <b>SNAP8200WTRA</b>	<b>SNAP8300ITRA</b> <b>SNAP8300LATRA</b> <b>SNAP8300WTRA</b>
Specification Grade, smooth nylon face, modular receptacle which requires pigtailed connector below.	Ivory Light Almond White	<b>SNAP5262INA</b> <b>SNAP5262LANA</b> <b>SNAP5262WNA</b>	<b>SNAP5362INA</b> <b>SNAP5362LANA</b> <b>SNAP5362WNA</b>
Specification Grade, Tamper-Resistant, smooth nylon face, modular receptacle which requires pigtailed connector below.	Ivory Light Almond White	<b>SNAP5262ITRA</b> <b>SNAP5262LATRA</b> <b>SNAP5262WTRA</b>	<b>SNAP5362ITRA</b> <b>SNAP5362LATRA</b> <b>SNAP5362WTRA</b>



## SNAPConnect® Right Angle Pigtailed Connector

Description	Wire Type	Catalog Number
Clear right angle terminal with 6 inch leads #12 AWG THHN/THWN-2; Polycarbonate housing material	Solid	<b>SNAP1RNA</b>
	Stranded	<b>SNAP2RNA</b>



## Hubbell-PRO Heavy Duty Duplex Receptacles

Description	Color	15A 125V	20A 125V
Hospital Grade ●, smooth nylon face, back and side wired.	Ivory Light Almond White	<b>8200IV</b> <b>8200LA</b> <b>8200WHI</b>	<b>8300IV</b> <b>8300LA</b> <b>8300WHI</b>
Hospital Grade ●, Tamper-Resistant, smooth nylon face, back and side wired.	Ivory Light Almond White	<b>8200IVTRA</b> <b>8200LATRA</b> <b>8200WTRA</b>	<b>8300IVTRA</b> <b>8300LATRA</b> <b>8300WTRA</b>
Specification Grade, smooth nylon face, back and side wired.	Ivory Light Almond White	<b>5252AI</b> <b>5252ALA</b> <b>5252AW</b>	<b>5352AI</b> <b>5352ALA</b> <b>5352AW</b>
Finder groove nylon face, back and side wired.	Ivory Light Almond White	<b>5262I</b> <b>5262LA</b> <b>5262W</b>	<b>5362I</b> <b>5362LA</b> <b>5362W</b>
Weather Resistant, finder groove nylon face, back and side wired.	Ivory White	<b>5262IWR</b> <b>5262WWR</b>	<b>5362IWR</b> <b>5362WWR</b>
Isolated ground, finder groove face, back and side wired.	Ivory Orange White	<b>CR5252IGI</b> <b>CR5252IG</b> <b>CR5252IGW</b>	<b>CR5352IGI</b> <b>CR5352IG</b> <b>CR5352IGW</b>



Visit [www.hubbell-wiring.com](http://www.hubbell-wiring.com) for complete product listing

Comprehensive country of origin catalog number list is available from Hubbell Customer Service or your local Hubbell Territory Manager





# Switches



SNAP1201INA



SNAP1223WNA



SNAP1201ILINA



SNAP1221PLWNA



CS1201IU



CS1221WU

## SNAPConnect® Specification Grade Toggle Series 15A, 120-277V AC

Description	Toggle Color	Single Pole	Double Pole	Three Way	Four Way
SNAPConnect® Toggle.	Ivory	<b>SNAP1201INA</b>	—	<b>SNAP1203INA</b>	—
	Light Almond	<b>SNAP1201LANA</b>	—	<b>SNAP1203LANA</b>	—
	White	<b>SNAP1201WNA</b>	—	<b>SNAP1203WNA</b>	—

## 20A, 120-277V AC

Description	Toggle Color	Single Pole	Double Pole	Three Way	Four Way
SNAPConnect® Toggle.	Ivory	<b>SNAP1221INA</b>	—	<b>SNAP1223INA</b>	—
	Light Almond	<b>SNAP1221LANA</b>	—	<b>SNAP1223LANA</b>	—
	White	<b>SNAP1221WNA</b>	—	<b>SNAP1223WNA</b>	—

## Illuminated, Light ON with Load OFF 15A, 120-277V AC

Description	Toggle Color	Single Pole	Double Pole	Three Way	Four Way
Illuminated, Light ON with Load OFF, Toggle, Blue LED.	Ivory	<b>SNAP1201ILINA</b>	—	<b>SNAP1203ILINA</b>	—
	White	<b>SNAP1201ILWNA</b>	—	<b>SNAP1203ILWNA</b>	—

## 20A, 120-277V AC

Description	Toggle Color	Single Pole	Double Pole	Three Way	Four Way
Illuminated, Light ON with Load OFF, Toggle, Blue LED.	Ivory	<b>SNAP1221ILINA</b>	—	<b>SNAP1223ILINA</b>	—
	White	<b>SNAP1221ILWNA</b>	—	<b>SNAP1223ILWNA</b>	—

## Pilot, Light ON with Load ON 15A, 120-277V AC

Description	Toggle Color	Single Pole	Double Pole	Three Way	Four Way
Pilot, Light ON with Load ON, Toggle, Red LED.	Ivory	<b>SNAP1201PLINA</b>	—	—	—
	White	<b>SNAP1201PLWNA</b>	—	—	—

## 20A, 120-277V AC

Description	Toggle Color	Single Pole	Double Pole	Three Way	Four Way
Pilot, Light ON with Load ON, Toggle, Red LED.	Ivory	<b>SNAP1221PLINA</b>	—	—	—
	White	<b>SNAP1221PLWNA</b>	—	—	—

## Construction Series, Heavy Duty, Specification Grade Switches

Description	Color	15A	20A
		120/277V AC	120/277V AC
Description	Color	Catalog Number	Catalog Number
Single pole, toggle, back and side wired.	Ivory	<b>CS1201IU</b>	<b>CS1221IU</b>
	White	<b>CS1201WU</b>	<b>CS1221WU</b>
Double pole, toggle, back and side wired.	Ivory	<b>CS1202IU</b>	<b>CS1222IU</b>
	White	<b>CS1202WU</b>	<b>CS1222WU</b>
Three way, toggle, back and side wired.	Ivory	<b>CS1203IU</b>	<b>CS1223IU</b>
	White	<b>CS1203WU</b>	<b>CS1223WU</b>
Four way, toggle, back and side wired.	Ivory	<b>CS1204IU</b>	<b>CS1224IU</b>
	White	<b>CS1204WU</b>	<b>CS1224WU</b>



Visit [www.hubbell-wiring.com](http://www.hubbell-wiring.com) for complete product listing

Comprehensive country of origin catalog number list is available from Hubbell Customer Service or your local Hubbell Territory Manager



# Thermoplastic and Stainless Steel Wallplates

## Thermoplastic Wallplates

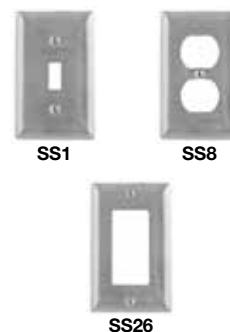
	Minimum Order Qty	Standard Size			Mid-Size	
		Ivory	White	Red	Ivory	White
<b>Toggle Wallplates</b>						
1-Gang; 1-toggle opening	25	NP1INA	NP1WNA	NP1RNA	NPJ1INA	NPJ1WNA
2-Gang; 2-toggle openings	10	NP2INA	NP2WNA	NP2RNA	NPJ2INA	NPJ2WNA
3-Gang; 3-toggle openings	10	NP3INA	NP3WNA	—	NPJ3INA	NPJ3WNA
4-Gang; 4-toggle openings	10	NP4INA	NP4WNA	—	NPJ4INA	NPJ4WNA
<b>Duplex Wallplates</b>						
1-Gang; 1-duplex opening	25	NP8INA	NP8WNA	NP8RNA	NPJ8INA	NPJ8WNA
2-Gang; 2-duplex openings	10	NP82INA	NP82WNA	NP82RNA	NPJ82INA	NPJ82WNA
<b>Decorator Wallplates</b>						
1-Gang; 1-decorator opening	25	NP26INA	NP26WNA	NP26RNA	NPJ26INA	NPJ26WNA
2-Gang; 2-decorator openings	10	NP262INA	NP262WNA	NP262RNA	NPJ262INA	NPJ262WNA
3-Gang; 3-decorator openings	10	NP263INA	NP263WNA	—	NPJ263INA	NPJ263WNA
4-Gang; 4-decorator openings	10	NP264INA	NP264WNA	—	NPJ264INA	NPJ264WNA
<b>Single Receptacle Wallplates</b>						
1-Gang; 1-single 1.41" (35.7) dia. opening	25	NP7INA	NP7WNA	NP7RNA	NPJ7INA	NPJ7WNA
1-Gang; 1-single 2.13" (53.9) dia. opening	25	NP724INA	NP724WNA	—	NPJ724INA	NPJ724WNA
2-Gang; 1-single 2.13" (53.9) dia. opening	10	NP703INA	NP703WNA	—	—	—
<b>Blank Wallplates</b>						
1-Gang, box mount	25	NP13INA	NP13WNA	—	NPJ13INA	NPJ13WNA
2-Gang, box mount	10	NP23INA	NP23WNA	—	NPJ23INA	NPJ23WNA
<b>Combination Wallplates</b>						
2-Gang; 1-toggle and 1-duplex opening	10	NP18INA	NP18WNA	—	NPJ18INA	NPJ18WNA
2-Gang; 1-toggle and 1-decorator opening	10	NP126INA	NP126WNA	—	NPJ126INA	NPJ126WNA
2-Gang; 1-duplex and 1-decorator opening	10	NP826INA	NP826WNA	—	NPJ826INA	NPJ826WNA
<b>Telephone &amp; Coaxial Wallplates</b>						
1-Gang; 1-telephone .63" (16.0) dia. hole; box mount	25	NP11INA	NP11WNA	—	NPJ11INA	NPJ11WNA



## 302/304 Stainless Steel and 430 Stainless Steel Wallplates

Hubbell's broad offering of stainless steel wallplates are available in both 302/304 stainless steel or in the more economical 430 stainless steel version. All stainless plates are "Buy American Compliant/U.S. Government Procurement-Eligible".

Description	Material	Single Gang	Two Gang
Switch 302/304 SS	Stainless Steel	SS1	SS2
Switch 430 SS	Stainless Steel	SS1L	SS2L
Duplex 302/304 SS	Stainless Steel	SS8	SS82
Duplex 430 SS	Stainless Steel	SS8L	SS82L
Decorator 302/304 SS	Stainless Steel	SS26	SS262
Decorator 430 SS	Stainless Steel	SS26L	SS262L



Visit [www.hubbell-wiring.com](http://www.hubbell-wiring.com) for complete product listing

Comprehensive country of origin catalog number list is available from Hubbell Customer Service or your local Hubbell Territory Manager





# H-MOSS® Occupancy Sensors and Lighting Controls



Hubbell Lighting Control Manufacturing and Design, Austin, TX

## Hubbell Occupancy Sensors Play a Key Role

Strive for reduced energy costs with Hubbell Occupancy Sensors and Lighting Controls. In the U.S., lighting consumes 22% of electricity and represents \$40 billion a year in energy costs. Using advanced technology, Hubbell's H-MOSS® Occupancy Sensors are doing their part to save energy and provide sustainability by automatically and effectively turning lights on when a room is occupied and off when a room is vacant. In a typical office building, lighting accounts for 35 to 45% of energy use, H-MOSS Occupancy Sensors have the potential to reduce wasted lighting by 13 to 90% for a significant return on investment (ROI).

### Adaptive Technology

- "Install and forget" operation
- Zero arc point switching
- Dual 120/277V AC operation; no neutral required
- Auto or manual ON operating modes (2000 series)
- Manual ON (Vacancy) operating mode (2001 series)
- No minimum load requirements
- Hard lens (dual technology, passive infrared)
- Steel mounting strap
- Built-in photocell with manual super saver mode for daylight harvesting
- Bi-level switching or dual load control (2 or 2N suffix)
- Compatible with most LED and CFL
- CEC Title 24 Compliant
- cULus

### Dual (Ultrasonic and Passive Infrared)

1000 square foot coverage with photocell, 800W Incandescent, 1000W Fluorescent at 120V AC, 1800W Fluorescent at 277V AC, 50/60Hz.



Description	Color	Single Circuit		Dual Circuit	
		1 button for manual/auto control	Auto control with no button	2 buttons for manual/auto control	Auto control with no button
Dual (ultrasonic and passive infrared)	Black	<b>AD2000BK1U</b>	<b>AD2000BK1NU</b>	<b>AD2000BK2U</b>	<b>AD2000BK2NU</b>
	Gray	<b>AD2000GY1U</b>	<b>AD2000GY1NU</b>	<b>AD2000GY2U</b>	<b>AD2000GY2NU</b>
	Ivory	<b>AD2000I1U</b>	<b>AD2000I1NU</b>	<b>AD2000I2U</b>	<b>AD2000I2NU</b>
	Light Almond	<b>AD2000LA1U</b>	<b>AD2000LA1NU</b>	<b>AD2000LA2U</b>	<b>AD2000LA2NU</b>
	White	<b>AD2000W1U</b>	<b>AD2000W1NU</b>	<b>AD2000W2U</b>	<b>AD2000W2NU</b>

### Ultrasonic

400 square foot coverage with photocell, 800W Incandescent, 1000W Fluorescent at 120V AC, 1800W Fluorescent at 277V AC, 50/60Hz.



Description	Color	Single Circuit		Dual Circuit	
		1 button for manual/auto control	Auto control with no button	2 buttons for manual/auto control	Auto control with no button
Ultrasonic	Black	<b>AU2000BK1U</b>	<b>AU2000BK1NU</b>	<b>AU2000BK2U</b>	<b>AU2000BK2NU</b>
	Gray	<b>AU2000GY1U</b>	<b>AU2000GY1NU</b>	<b>AU2000GY2U</b>	<b>AU2000GY2NU</b>
	Ivory	<b>AU2000I1U</b>	<b>AU2000I1NU</b>	<b>AU2000I2U</b>	<b>AU2000I2NU</b>
	Light Almond	<b>AU2000LA1U</b>	<b>AU2000LA1NU</b>	<b>AU2000LA2U</b>	<b>AU2000LA2NU</b>
	White	<b>AU2000W1U</b>	<b>AU2000W1NU</b>	<b>AU2000W2U</b>	<b>AU2000W2NU</b>

### Passive Infrared

1000 square foot coverage with photocell, 800W Incandescent, 1000W Fluorescent at 120V AC, 1800W Fluorescent at 277V AC, 50/60Hz.



Description	Color	Single Circuit		Dual Circuit	
		1 button for manual/auto control	Auto control with no button	2 buttons for manual/auto control	Auto control with no button
Passive infrared	Black	<b>AP2000BK1U</b>	<b>AP2000BK1NU</b>	<b>AP2000BK2U</b>	<b>AP2000BK2NU</b>
	Gray	<b>AP2000GY1U</b>	<b>AP2000GY1NU</b>	<b>AP2000GY2U</b>	<b>AP2000GY2NU</b>
	Ivory	<b>AP2000I1U</b>	<b>AP2000I1NU</b>	<b>AP2000I2U</b>	<b>AP2000I2NU</b>
	Light Almond	<b>AP2000LA1U</b>	<b>AP2000LA1NU</b>	<b>AP2000LA2U</b>	<b>AP2000LA2NU</b>
	White	<b>AP2000W1U</b>	<b>AP2000W1NU</b>	<b>AP2000W2U</b>	<b>AP2000W2NU</b>



Visit [www.hubbell-wiring.com](http://www.hubbell-wiring.com) for complete product listing

Comprehensive country of origin catalog number list is available from Hubbell Customer Service or your local Hubbell Territory Manager



# H-MOSS® Occupancy Sensors and Lighting Controls

## Dual (Ultrasonic and Passive Infrared)

Description	Color	Coverage Area		
		2000 sq. ft. (360°)	1000 sq. ft. (180°)	500 sq. ft. (180°)
Low voltage sensor w/ photocell & isolated relay	Office White	<b>ATD2000CRPU</b>	<b>ATD1000CRPU</b>	<b>ATD500CRPU</b>
Low voltage sensor	Office White	<b>ATD2000CU</b>	<b>ATD1000CU</b>	<b>ATD500CU</b>
Line voltage sensor	Office White	<b>ATD2000CLU</b>	<b>ATD1000CLU</b>	—



ATD2000CU

ATD1000CU/  
ATD500CU

## Ultrasonic

Description	Color	Coverage Area		
		2000 sq. ft. (360°)	1000 sq. ft. (180°)	500 sq. ft. (180°)
Low voltage sensor w/ photocell & isolated relay	Office White	<b>ATU2000CRPU</b>	<b>ATU1000CRPU</b>	<b>ATU500CRPU</b>
Low voltage sensor	Office White	<b>ATU2000CU</b>	<b>ATU1000CU</b>	<b>ATU500CU</b>
Line voltage sensor	Office White	<b>ATU2000CLU</b>	<b>ATU1000CLU</b>	—



ATU2000CU

ATU1000CU/  
ATU500CU

## Passive Infrared

Description	Color	Coverage Area	
		1500 sq. ft. (360°)	450 sq. ft. (360°)
Low voltage sensor w/ photocell & isolated relay	Office White	<b>ATP1500CRPU</b>	<b>ATP600CRPU</b>
Low voltage sensor	Office White	<b>ATP1500CU</b>	<b>ATP600CU</b>
Line voltage sensor	Office White	<b>ATP1500CLU</b>	<b>ATP600CLU</b>



ATP1500CU/  
ATP600CU

## Dual (Ultrasonic and Passive Infrared)

Description	Color	Coverage	Catalog Number
Low voltage sensor 32kHz w/ photocell & isolated relay	Office White	1600 sq. ft.	<b>ATD1600WRPU</b>
Low voltage sensor 32kHz	Office White	1600 sq. ft.	<b>ATD1600WU</b>



ATD1600WU

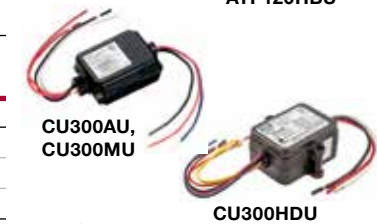
ATP1600WU,  
ATP120HBU

## Passive Infrared

Description	Color	Coverage	Catalog Number
Low voltage sensor with photocell and isolated relay	Office White	1600 sq. ft.	<b>ATP1600WRPU</b>
Low voltage sensor	Office White	1600 sq. ft.	<b>ATP1600WU</b>
Low voltage sensor for aisle and high bay applications, with photocell and isolated relay	Office White	120 linear feet	<b>ATP120HBRPU</b>
Low voltage sensor for aisle and high bay applications	Office White	120 linear feet	<b>ATP120HBU</b>

## Control Units

Description	Catalog Number
Automatic-ON operation, 120/277V AC, 50/60Hz	<b>CU300AU</b>
Manual-ON operation, 120/277V AC, 50/60Hz	<b>CU300MU</b>
Auto or manual-ON operation, 120/277V AC, 50/60Hz	<b>CU300HDU</b>



CU300AU,  
CU300MU

CU300HDU

## Wireless Control Units

Description	Catalog Number
Heavy Duty Control Unit with Wireless Transmitter, 100-277V AC	<b>WLCU301</b>
Wireless Status Transmitter, 24V DC	<b>WLCA</b>
Single (1) circuit heavy duty control unit with wireless receiver, 100-277V AC	<b>WLC301</b>
Dual (2) circuit heavy duty control unit with wireless receiver, 100-277V AC	<b>WLC302</b>
Dual (2) circuit heavy duty furniture feed box with relays and wireless receiver, 100-277V AC	<b>WLC402W</b>
Wireless control unit with isolated relay, 16A, 120V AC or 277V AC	<b>WLC316R</b>
Daylight sensor 0–107,000 Lux (0–10,000 foot candles)	<b>WLDH</b>



WLC316R

WLC301

DHADC

ACIPE

## Daylight Harvesting

Description	Voltage	Catalog Number
Single zone continuous automatic dimming control	10V DC	<b>DHADC</b>
Indoor photocell	24V DC	<b>DHIP</b>
Outdoor photocell	24V DC	<b>DHOP</b>
Atrium photocell	24V DC	<b>DHAP</b>
Skylight photocell	24V DC	<b>DHSP</b>
Control module	24V DC	<b>DHCM</b>

## Ceiling Sensors Accessories

Description	Catalog Number
Ceiling sensor infrared, NEMA 4X enclosure	<b>ACIPE</b>
Ceiling mount raceway adapter	<b>ACMRA</b>
Ceiling mount wire guard	<b>ACMG</b>

Visit [www.hubbell-wiring.com](http://www.hubbell-wiring.com) for complete product listing

Comprehensive country of origin catalog number list is available from Hubbell Customer Service or your local Hubbell Territory Manager





# Network Wiring - Enterprise Grade Commercial Products



**HJ6AB**



**HXJ6BK**



**HXJ5EB**

## NEXTSPEED® Jacks

Description	Category 6A	Category 6	Category 5e
Single Pack	<b>HJ6Axx</b>	<b>HXJ6xx</b>	<b>HXJ5Exx</b>
25-Pack	<b>HJ6Axx25</b>	<b>HXJ6xx25</b>	<b>HXJ5Exx25</b>

xx = colors: **AL** (Almond), **BK** (Black), **B** (Blue), **EI** (Electric Ivory), **GL** (Gold), **GY** (Gray), **GN** (Green), **OW** (Office White), **OR** (Orange), **P** (Purple), **R** (Red), **W** (White) and **Y** (Yellow).



**HP6A24**



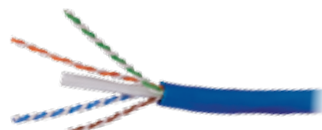
**HP648A**



**HP5E48**

## NEXTSPEED® Patch Panels

Format	Color	Category 6A	Category 6	Category 5e
24-Port Standard	Black	<b>HP6A24</b>	<b>HP624</b>	<b>HP5E24</b>
	White	<b>HP6A24W</b>	<b>HP624W</b>	<b>HP5E24W</b>
24-Port Angled	Black	<b>HP6A24A</b>	<b>HP624A</b>	<b>HP5E24A</b>
48-Port Standard	Black	<b>HP6A48</b>	<b>HP648</b>	<b>HP5E48</b>
	White	<b>HP6A48W</b>	<b>HP648W</b>	<b>HP5E48W</b>
48-Port Angled	Black	<b>HP6A48A</b>	<b>HP648A</b>	<b>HP5E48A</b>



**C6ASRB**



**C6RPY**



**C5ERPPGY**

## NEXTSPEED® UPT Cable

Description	Color	Category 6A	Category 6	Category 5e
Plenum	Blue	<b>C6ASPB</b>	<b>C6RPB</b>	<b>C5EPRPB</b>
	Gray	<b>C6ASPGY</b>	<b>C6RPGY</b>	<b>C5EPRPGY</b>
	White	<b>C6ASPW</b>	<b>C6RPW</b>	<b>C5EPRPW</b>
	Yellow	<b>C6ASPY</b>	<b>C6RPY</b>	<b>C5EPRPY</b>
Riser	Blue	<b>C6ASRB</b>	<b>C6RRB</b>	<b>C5EPRRB</b>
	Gray	<b>C6ASRGY</b>	<b>C6RRGY</b>	<b>C5EPRRGY</b>
	White	<b>C6ASRW</b>	<b>C6RRW</b>	<b>C5EPRRW</b>
	Yellow	<b>C6ASRY</b>	<b>C6RRY</b>	<b>C5EPRRY</b>



**HC6AB01**



**HC6Y01**



**HC5EB01**

## NEXTSPEED® Patch Cords

Description	Color	Category 6A	Category 6	Category 5e
Patch Cord	Black	<b>HC6ABKyy</b>	<b>HC6BKyy</b>	<b>HC5EBKyy</b>
	Blue	<b>HC6AByy</b>	<b>HC6Byy</b>	<b>HC5EByy</b>
	Gray	<b>HC6AGYyy</b>	<b>HC6GYyy</b>	<b>HC5EGYyy</b>
	Green	<b>HC6AGNyy</b>	<b>HC6GNyy</b>	<b>HC5EGNyy</b>
	Orange	<b>HC6AORyy</b>	<b>HC6ORyy</b>	<b>HC5EORyy</b>
	Purple	<b>HC6APyy</b>	<b>HC6Pyy</b>	<b>HC5EPyy</b>
	Pink	<b>HC6APKyy</b>	<b>HC6PKyy</b>	<b>HC5EPKyy</b>
	Red	<b>HC6ARyy</b>	<b>HC6Ryy</b>	<b>HC5ERyy</b>
	White	<b>HC6AWyy</b>	<b>HC6Wyy</b>	<b>HC5EWyy</b>
	Yellow	<b>HC6AYyy</b>	<b>HC6Yyy</b>	<b>HC5EYyy</b>

yy = Standard Length: **01** (1'), **03** (3'), **05** (5'), **07** (7'), **10** (10'), **15** (15'), **20** (20'), **25** (25'). Made-to-order lengths are available from 30 ft. to 75 ft. in 5 ft. increments.



Visit [www.hubbell-wiring.com](http://www.hubbell-wiring.com) for complete product listing

Comprehensive country of origin catalog number list is available from Hubbell Customer Service or your local Hubbell Territory Manager





# Network Wiring - Enterprise Grade Commercial Products



6110FTK64NL



6110FTK192WL



110BLK100FTK4

## NEXTSPEED® Field Termination Kits

Pairs	Legs	Connecting Blocks	Category 6A	Category 6
64-pair	With	16	<b>6110FTK64WL</b>	<b>6110FTK64WL</b>
64-pair	Without	16	<b>6110FTK64NL</b>	<b>6110FTK64NL</b>
192-pair	With	64	<b>6110FTK192WL</b>	<b>6110FTK192WL</b>

Pairs with 4-pair blocks	Category 5e
50-pair	<b>110BLK50FTK4</b>
100-pair	<b>110BLK100FTK4</b>
300-pair	<b>110BLK300FTK4</b>



OCLCQ50G

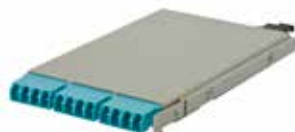


Fiber Trunk Assembly, Made to Order

## Standard SC/LC-MPO Cassettes

50, OM3		
Description	Ports	Catalog Number
SC duplex	12	<b>OCSC50G</b>
LC duplex	12	<b>OCLC50G</b>
LC duplex	24	<b>OCLCD50G</b>
LC quad	24	<b>OCLCQ50G</b>

Note: Standard LC-MPO cassettes are not compatible with the HD enclosures.



OCLCHD50G3

## Ultra Compact LC-MPO Cassettes

Description	Catalog Number
12-port, 50, OM3	<b>OCLCHD50G3</b>

## Fiber Trunk Cable Assemblies

BIDnet pre-terminated fiber trunk assemblies are custom made to order in any length, fiber type or cable construction for a reliable, high-performance data center.

- Fast, efficient deployment
- 100% factory tested and assembled
- Mission Critical® 25-year warranty

### MPO round, OM3/OM4

Options	Applications Supported
12-fiber	10/40 GbE
24-fiber	10/40/100 GbE
48-fiber	10/40/100 GbE

Note: Contact your local distributor or Hubbell customer service for additional information on BIDnet Pre-Terminated Fiber Trunk Assemblies.





## Spider® Boxes and Pin and Sleeve Devices



### Hubbell Products for Military Applications and U.S. Government Facilities

Hubbell manufactures products that are “Buy American Compliant/U.S. Government Procurement-Eligible” and ideal for military housing complexes, training facilities, field use and government facilities such as the Lawrence Livermore National Laboratory.

Hubbell Wiring Systems has manufacturing sites in Connecticut, North Carolina, Texas and Puerto Rico producing thousands of different products every day.



60A Spider® II

### Spider® Boxes

Hubbell's Spider II power distribution system sets the safety and performance standard for temporary power needs. Ideal for military bases, ship board applications, or mobile applications. Spider II boxes are Hubbell tough, HUBBELLSAFE!

- 30A units feature Twist-Lock® feed through (input and output) and NEMA 5-20R straight blade convenience outlets
- 50A 125/250V units feature NEMA 5-20R straight blade or NEMA L5-20R Twist-Lock receptacles and (1) NEMA L6-30R 30A 250V outlet
- 60A 120/208V units feature 60A pin and sleeve feed-through and Twist-Lock or straight blade outlets



60A Military Spider® II

### Military Spider® II Boxes

These products are built to military requirements and are presently deployed domestically and abroad. All units feature straight blade or Twist-Lock® watertight receptacles, individual GFCI modules, electronic supervisory circuit and are completely field serviceable.

- Military Spider boxes feature Class L input and output devices
- 60A 120/208V Twist-Lock or straight blade outlets
- Twist-Lock® or straight blade outlets
- NATO 383 Green Color



HBL430P7W



HBL430R7W

### HBL® Series Pin & Sleeve Devices

**The only IEC Pin & Sleeve device manufactured in the USA**, Hubbell offers the toughest and most comprehensive product offering in the industry. Hubbell tough, HUBBELLSAFE!

- 16A, 20A, 30A, 32A, 60A, 63A, 100A and 125A product lines
- 2P 3W, 3P 4W and 4P 5W versions in most voltage configurations
- Plugs, connectors, receptacles, inlets, outlets and a wide variety of boxes are available
- Advantage™ Series 30A & 60A Switch-Rated Devices are IEC 60309-2 compatible devices that are approved as a disconnecting means for motor and branch circuits



HBL530R7W



HBL560C9W

### Circuit-Lock® Disconnect Switches / Mechanical Interlock Devices

Hubbell's Circuit-Lock® product line is a comprehensive offering of disconnect switches and mechanical interlock devices that adds or provides safety and durability to every installation.

- Manual Motor Controllers
- Fused Disconnects
- Unfused Disconnects
- Fused Mechanical Interlocks
- Unfused Mechanical Interlocks
- Interlocks for Twist-Lock®, IEC Pin & Sleeve and UL 1686 Pin & Sleeve devices



HBLDS3



HBL430MIF12W



Visit [www.hubbell-wiring.com](http://www.hubbell-wiring.com) for complete product listing

Comprehensive country of origin catalog number list is available from Hubbell Customer Service or your local Hubbell Territory Manager



## Cable Protection Products/Delivery Systems

### Cable Protection Products

Non-metallic cable protectors are designed to safeguard electrical cables and cords from vehicle and pedestrian traffic.

- TrukTrak® system comes in two, three and five channel constructions with a variety of accessories
- TredTrak® is a five channel product that also includes a wide variety of fittings and end caps
- AccessTrak® is ADA compliant and offers expandability and flexibility for every application
- FloorTrak® is a flexible, non-metallic cover for cables that run over the floor when they can not be concealed or routed away from traffic patterns



### SpikeShield® Panel Surge Protective Devices

Hubbell's SpikeShield family of Surge Protective Devices (SPDs) are UL 1449 third edition compliant and offer products that are ideal of residential, commercial and industrial applications.

- UL Type 1 surge arrestors for line side or load side installations
- UL Type 2 panel enclosed surge protective devices for load side applications at the service entrance, branch panel and point-of-use applications
- UL Type 2 wired-in surge protective devices for all load side applications



### Pre-Fabricated Building Wiring System

Hubbell's Pre-Fabricated Building Wiring System is a feature rich product line that offers labor savings and enables the contractor to finish projects faster.

- Complete turn key system
- Pre-assembled boxes and brackets
- Specialized mounting brackets and hangers
- Pre-Fab solutions are manufactured to customer requirements



### Pre-Wired Surface Raceway

Hubbell Pre-Wired Raceway Systems will accommodate power and data requirements as a facility changes over time. Pre-Wired Raceways provide the benefit of keeping fast track projects on schedule, and helping complete the job on time. Hubbell's Pre-Wired Raceway solutions will save up to 45% of the installation time needed for field installing component raceway parts.

- Aluminum Raceway
- Steel Raceway
- Non-Metallic Raceway
- Pre-Wired Raceway solutions are manufactured to customer requirements



### Floor Boxes, Fire-Rated Poke-Throughs, Furniture Boxes

Hubbell manufactures a wide range of floor boxes, fire-rated poke-through devices and furniture connectivity boxes.

- Floor boxes available in stamped steel, cast iron, flush, recessed, and pedestal versions. A wide variety of cover materials and finishes are also available
- Fire-Rate Poke-Through Devices for every application
- Furniture connectivity products available in a variety of sizes, finishes and appearances



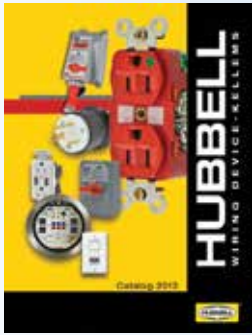
Visit [www.hubbell-wiring.com](http://www.hubbell-wiring.com) for complete product listing

Comprehensive country of origin catalog number list is available from Hubbell Customer Service or your local Hubbell Territory Manager



## Available Literature

Hubbell offers an extensive literature library for product support. Downloadable PDFs are available on line.



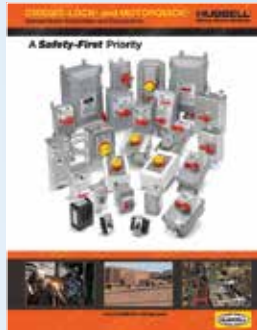
Hubbell Wiring Device-Kellems Catalog



Hubbell Premise Wiring Catalog



Advantage Series Switched Pin & Sleeve



Circuit-Lock® and MotorQuick



SystemOne Recessed Floor Boxes