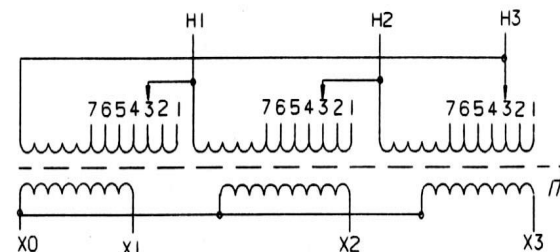
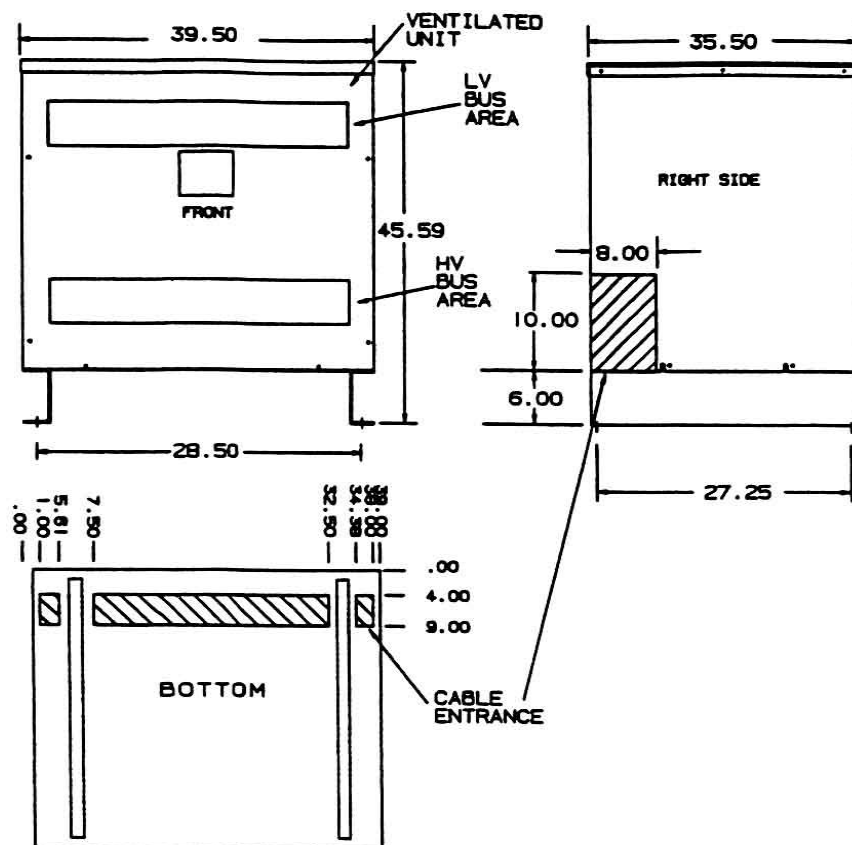
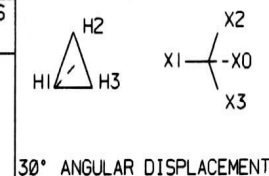


Revisions



PRIMARY VOLTS	%	CONNECT LEADS TO TAP NO.
504	105	1
492	102.5	2
480	100	3
468	97.5	4
456	95	5
444	92.5	6
432	90	7



PRIMARY LINES TO H1-H2-H3
SECONDARY LINES TO X0-X1-X2-X3

NOTE:
PRIMARY AND SECONDARY BUS AREA
IN FRONT OF CASE.

KEY: DENOTES CONDUIT AREAS

KVA	CATALOG NUMBER	VOLTAGE		WEATHER SHIELD	WEIGHT	PHASE	FREQ.
		HIGH	LOW				
225	TP-53317-1S	480Δ	208Y/120	WS-A-5	1567 Lbs	3φ	60 Hz

Winding Rise:	115°C
Insulation:	220°C
Sound Level:	55db

TYPICAL PERFORMANCE DATA

Regulation @ 100% PF:	1.74%
Standards:	TP-1

Windings:	AL
Impedance:	4.67%

Typical Efficiency:	98.63%
No Load Losses:	720 W
Full Load Losses:	4,428 W

Meets TP-2002 Efficiency

Control
7

A



Type No.

Weather Shield – WS-A-5

DRAWN:

DATE: November 26, 2012

CASE 5