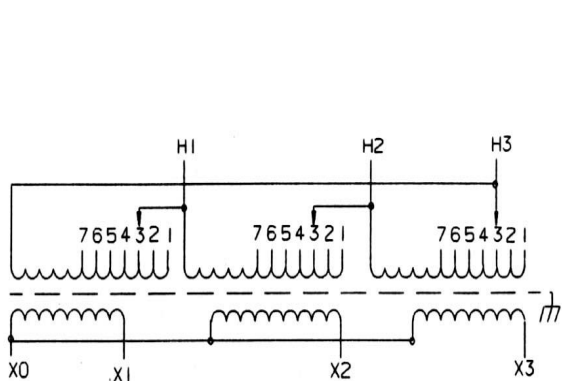
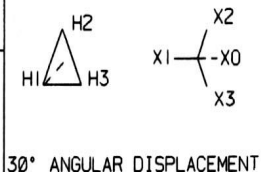


Revisions



PRIMARY VOLTS	%	CONNECT LEADS TO TAP NO.
504	105	1
492	102.5	2
480	100	3
468	97.5	4
456	95	5
444	92.5	6
432	90	7

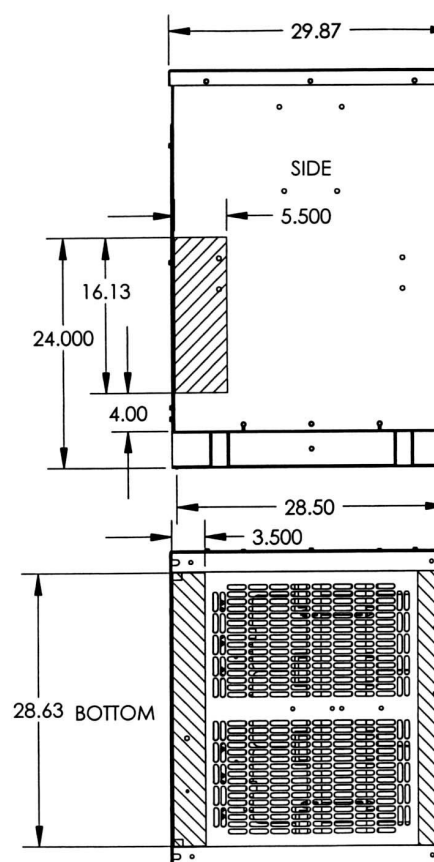
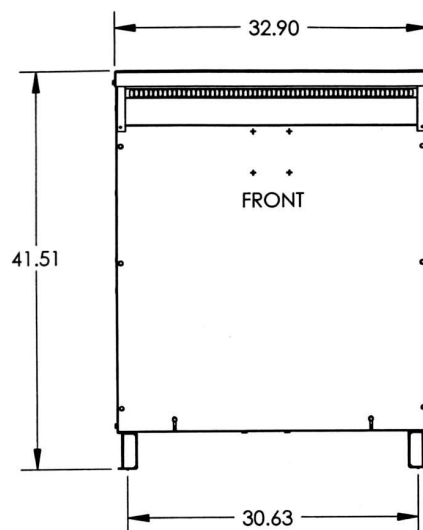


PRIMARY LINES TO H1-H2-H3

SECONDARY LINES TO X0-X1-X2-X3

NOTE:
PRIMARY AND SECONDARY BUS AREA
IN FRONT OF CASE.

KEY: DENOTES CONDUIT AREAS



KVA	CATALOG NUMBER	VOLTAGE		WEATHER SHIELD	WEIGHT	PHASE	FREQ.
		HIGH	LOW				
150	TP-53316-3S	480Δ	208Y/120	WS-A-4	1220 Lbs	3φ	60 Hz

Winding Rise:	150°C
Insulation:	220°C
Sound Level:	50db

TYPICAL PERFORMANCE DATA

Regulation @ 100% PF:	3.01%
Standards:	TP-1

Windings:	AL
Impedance:	5.75%

Typical Efficiency:	98.34%
No Load Losses:	506 W
Full Load Losses:	4,582 W

Meets TP-2002 Efficiency

Control
7

MX



Type No.

DRAWN:

DATE: November 26, 2012

CASE 4