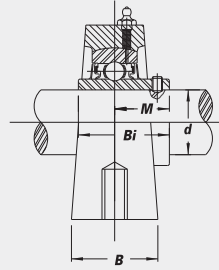
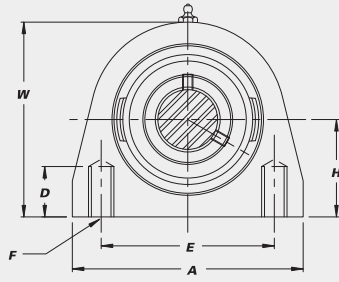
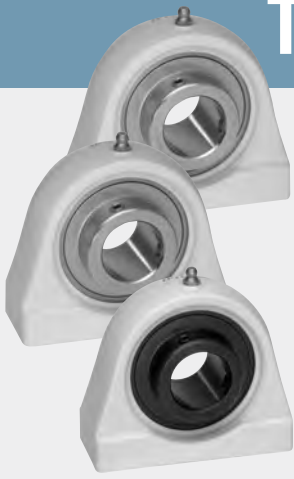


Thermoplastic Tapped Base Pillow Blocks



With Set Screw Lock

Optional bearing inserts:
Stainless Steel-SUCTPA
Hard Chrome Coated-CUCTPA
Black Oxide-BUCTPA

- End Caps Available for all styles.



B-type Seal



L3-type Seal

B-type seal available in all styles and sizes.

L3-type seal available in SUC units only. Limited sizes. Consult IPTCI for speed limitations.

CORROSION RESISTANT

Unit No.	Shaft Dia.		Dimensions (in.) (mm)								Bearing No.	Housing No.	Weight (lbs.)
	<i>d</i>		<i>H</i>	<i>A</i>	<i>E</i>	<i>B</i>	<i>W</i>	<i>F</i> -Tapped Holes	<i>D</i> -Min Tap Depth	<i>M</i>			

SUCTPA with Stainless Steel Bearing Inserts

SUCTPA 201-8	1/2		1 5/16	2 7/8	2	1 3/8	2 19/32	3/8"-16	1/2	0.7205	1.2205	SUC 201-8		
202-10	5/8		33.3	73	50.8	35	66	UNC	13	18.3	31.0	202-10	TPA 204	.6
204-12	3/4	20										204-12		
204												204		
SUCTPA 205-14	7/8		1 7/16	3	2	1 9/16	2 29/32	3/8"-16	1/2	0.7756	1.3386	SUC 205-14		
205	1	25	36.5	76	50.8	40	74	UNC	13	19.7	34.0	205	TPA 205	.8
205-16												205-16		
205-16												205-16		
SUCTPA 206-18	1 1/8		1 11/16	4	3	1 11/16	3 5/16	7/16"-14	1/2	0.8740	1.5000	SUC 206-18		
206		30	42.9	102	76.2	43	84	UNC	13	22.2	38.1	206	TPA 206	1.2
206-19	1 3/16											206-19		
206-20	1 1/4 S											206-20		
SUCTPA 207-20	1 1/4		1 7/8	4 5/16	3 1/4	1 7/8	3 3/4	1/2"-13	4 1/64	1.0000	1.6890	SUC 207-20		
207-21	1 5/8		47.6	110	82.6	48	95	UNC	16	25.4	42.9	207-21	TPA 207	1.7
207-22	1 3/8											207-22		
207		35										207		
207-23	1 7/16											207-23		
SUCTPA 208-24	1 1/2		1 15/16	4 3/4	3 1/2	1 7/8	4	1/2"-13	4 1/64	1.1890	1.9370	SUC 208-24		
208		40	49.2	120	88.9	48	101	UNC	16	30.2	49.2	208	TPA 208	2.1

CUCTPA with Hard Chrome Coated Bearing Inserts

CUCTPA 204-12	3/4		1 5/16	2 7/8	2	1 3/8	2 19/32	3/8"-16	1/2	0.7205	1.2205	CUC 204-12		
204		20	33.3	73	50.8	35	66	UNC	13	18.3	31.0	204	TPA 204	.6
CUCTPA 205-14	7/8		1 7/16	3	2	1 9/16	2 29/32	3/8"-16	1/2	0.7756	1.3386	CUC 205-14		
205	1	25	36.5	76	50.8	40	74	UNC	13	19.7	34.0	205	TPA 205	.8
205-16												205-16		
CUCTPA 206-18	1 1/8		1 11/16	4	3	1 11/16	3 5/16	7/16"-14	1/2	0.8740	1.5000	CUC 206-18		
206		30	42.9	102	76.2	43	84	UNC	13	22.2	38.1	206	TPA 206	1.2
206-19	1 3/16											206-19		
206-20	1 1/4 S											206-20		
CUCTPA 207-20	1 1/4		1 7/8	4 5/16	3 1/4	1 7/8	3 3/4	1/2"-13	4 1/64	1.0000	1.6890	CUC 207-20		
207-22	1 3/8		47.6	110	82.6	48	95	UNC	16	25.4	49.2	207-22	TPA 207	1.7
207		35										207		
207-23	1 7/16											207-23		
CUCTPA 208-24	1 1/2		1 15/16	4 3/4	3 1/2	1 7/8	4	1/2"-13	4 1/64	1.1890	1.9370	CUC 208-24		
208		40	49.2	120	88.9	48	101	UNC	16	30.2	49.2	208	TPA 208	2.1

BUCTPA with Black Oxide Bearing Inserts

BUCTPA 201-8	1/2		1 5/16	2 7/8	2	1 3/8	2 19/32	3/8"-16	1/2	0.7205	1.2205	BUC 201-8		
202-10	5/8		33.3	73	50.8	35	66	UNC	13	18.3	31.0	202-10	TPA 204	.6
204-12	3/4	20										204-12		
204												204		
BUCTPA 205-14	7/8		1 7/16	3	2	1 9/16	2 29/32	3/8"-16	1/2	0.7756	1.3386	BUC 205-14		
205	1	25	36.5	76	50.8	40	74	UNC	13	19.7	34.0	205	TPA 205	.8
205-16												205-16		
BUCTPA 206-18	1 1/8		1 11/16	4	3	1 11/16	3 5/16	7/16"-14	1/2	0.8740	1.5000	BUC 206-18		
206		30	42.9	102	76.2	43	84	UNC	13	22.2	38.1	206	TPA 206	1.2
206-19	1 3/16											206-19		
206-20	1 1/4 S											206-20		
BUCTPA 207-20	1 1/4		1 7/8	4 5/16	3 1/4	1 7/8	3 3/4	1/2"-13	4 1/64	1.0000	1.6890	BUC 207-20		
207-22	1 3/8		47.6	110	82.6	48	95	UNC	16	25.4	42.9	207-22	TPA 207	1.7
207		35										207		
207-23	1 7/16											207-23		
BUCTPA 208-24	1 1/2		1 15/16	4 3/4	3 1/2	1 7/8	4	1/2"-13	4 1/64	1.1890	1.9370	BUC 208-24		
208		40	49.2	120	88.9	48	101	UNC	16	30.2	49.2	208	TPA 208	2.1