

BALDOR® • RELIANCE 

Product Information Packet

RL525A

1HP,3450RPM,1PH,60HZ,56,1724L,OPEN,F1

Part Detail							
Revision:	AB	Status:	NLA/A	Change #:		Proprietary:	No
Type:	AC	Elec. Spec:	17WGW243	CD Diagram:	CD0052	Mfg Plant:	
Mech. Spec:	17K009	Layout:	17LYK009	Poles:	02	Created Date:	
Base:	RS	Eff. Date:	12-17-2014	Leads:	4#16 A&J,2#18 B PH,1#14 #1TH		

Specs			
Catalog Number:	RL525A	KVA Code:	K
Enclosure:	ODP	Lifting Lugs:	No Lifting Lugs
Frame:	56	Locked Bearing Indicator:	No Locked Bearing
Frame Material:	Steel	Motor Lead Quantity/Wire Size:	4 @ 16 AWG, A&J
Output @ Frequency:	1.000 HP @ 60 HZ	Motor Lead Exit:	Terminal Panel Or Lead Hole
Synchronous Speed @ Frequency:	3600 RPM @ 60 HZ	Motor Lead Termination:	None
Voltage @ Frequency:	115.0 V @ 60 HZ	Motor Type:	1724L
	230.0 V @ 60 HZ	Mounting Arrangement:	F1
Auxillary Box:	No Auxillary Box	Power Factor:	77
Auxillary Box Lead Termination:	None	Product Family:	General Purpose
Base Indicator:	Resilient	Pulley End Bearing Type:	Ball
Bearing Grease Type:	Polyrex EM (-20F +300F)	Pulley Face Code:	Resilient Mount
Blower:	None	Pulley Shaft Indicator:	Standard
Current @ Voltage:	11.800 A @ 115.0 V	Rodent Screen:	None
	5.900 A @ 230.0 V	RoHS Status:	ROHS COMPLIANT
	6.400 A @ 208.0 V	Shaft Extension Location:	Pulley End
Design Code:	N	Shaft Ground Indicator:	No Shaft Grounding
Drip Cover:	No Drip Cover	Shaft Rotation:	Reversible: Connected Standard

Duty Rating:	CONT	Shaft Slinger Indicator:	No Slinger
Electrically Isolated Bearing:	Not Electrically Isolated	Speed Code:	Single Speed
Feedback Device:	NO FEEDBACK	Motor Standards:	NEMA
Front Face Code:	Resilient Mount	Starting Method:	Direct on line
Front Shaft Indicator:	None	Thermal Device - Bearing:	None
Heater Indicator:	No Heater	Vibration Sensor Indicator:	No Vibration Sensor
Insulation Class:	B	Winding Thermal 1:	Automatic Thermal Overload
Inverter Code:	Not Inverter	Winding Thermal 1 Location:	SB

Nameplate NP1203A01										
CAT.NO.							ENCL	OPEN		
SPEC.	17K009W243						FRAME	56		
HP	1									
VOLTS	115/230									
AMPS	11.8/5.9									
RPM	3450									
HZ	60			PH	1		CL	B		
SER.F.	1.25			DES	N		CODE	K		
FL EFF	74			PF	77					
RATING	40C AMB-CONT									
SF AMP	13.8/6.9						USABLE AT 208V	6.4		
S/N										
MANUAL	N	AUTO			Y	NONE			N	

Parts List		
Part Number	Description	Quantity
SA085550	SA 17K009W243	1.000 EA
RA078664	RA 17K009W243	1.000 EA
TPCRJ51CY	THERMAL 1PH 1.0 AUT 120C	1.000 EA
EC4400A03	ELEC CAP 115V 1.8 X 3.3 USE EC1400A03 A	1.000 EA
TB0167B03	6 POS LONG FOOT 500 SERIES (22-17 AWG) M	1.000 EA
WD1540A01	TERMINAL, 187 SERIES 500 SERIES MAG-MATE	4.000 EA
WD1540A02	TERMINAL, 187 SERIES 500 SERIES MAG-MATE	2.000 EA
WD4100A49	CAPLUG,BP-13/16,PLUG W/RECESSED HEAD	1.000 EA
11XT0832G06	8-32 X 3/8 TY 23 TAPPING	1.000 EA
LD5000A403	LEAD ASSY W/INT STAR RING TERMINALS, 5"	1.000 EA
11XT1032A06	10-32 X 3/8 HX WSHR HD SLTD TYPE 23	2.000 EA
51XW0832A07	8-32 X .44, TAPTITE II, HEX WSHR SLTD SE	4.000 EA
RM1000A03	CUSHION RING, MDL 17-33-34	1.000 EA
HA6004A01A	CLAMP CUSHION RING ASSY	1.000 EA
34CB4501SP	TERMINAL BOX LID, STAMPED X (PLATED)	1.000 EA
33CB4800A02	CAPACITOR COVER, STAMPED	1.000 EA
34GS5003	OAM SLEEVE, ID = 2 1/16" X 3 3/8"	1.000 EA
51XB1016A05	10-16X5/16HX WA SL SR TYB (F/S)	2.000 EA
HW5100A03	WAVY WASHER (W1543-017)	1.000 EA
17EP3100B01	PU ENDPLATE, MACH W/HUB	1.000 EA
XY0832A02	8-32 HEX NUT	4.000 EA
RM1000A03	CUSHION RING, MDL 17-33-34	1.000 EA
HA6004A01A	CLAMP CUSHION RING ASSY	1.000 EA
HW2501D13	KEY, 3/16 SQ X 1.375	1.000 EA

Parts List (continued)		
Part Number	Description	Quantity
HA7000A04	KEY RETAINER 0.625 DIA SHAFTS	1.000 EA
17EP3200BT04	FR ENDPLATE, MACH W/HUB	1.000 EA
34BA4003E01A	RESILIENT BASE, (LENGTH 9.81") PRIMED	1.000 EA
SP5111A11	17L TERM PANEL SWITCH W/TABS & 1" THRM	1.000 EA
51XW0832A07	8-32 X .44, TAPTITE II, HEX WSHR SLTD SE	2.000 EA
HA3169A08	THRUBOLT #8-32 THDS X 9.062" LONG	4.000 EA
LB1171	LABEL CARTON 6X6 ON LINE BLANK	1.000 EA
NP1203A01	NP LABEL 1PH, DV, REV (FOR COMMERCIAL MO	1.000 EA
PA1000	PACKING GROUP 3500 SHORT	1.000 EA
MN416A01	TAG-INSTAL-MAINT no wire (1200/bx) 5/18	1.000 EA
LD5324A01	LD ASSY, ML14-1E14, 6", W/(1) WD1000A15	1.000 EA
LD5000A352	LD ASSY, ML14-JH16, 6.5" FLAG, .25 STRIP	1.000 EA
LD5000A353	LD ASSY, ML1400AE16, 5", FLAG, .25" STRP	1.000 EA
LD5309A01	LEAD ASSY, ML14-8C16 5" W/(2) WD1000A15	1.000 EA
LD5000A101	LEAD ASSY, ML14-EB18 5" FLAG EA END	1.000 EA
LD53424	LEAD ASSY. MAG MATE	1.000 EA

AC Induction Motor Performance Data
Record # 5052 - Typical performance - not guaranteed values

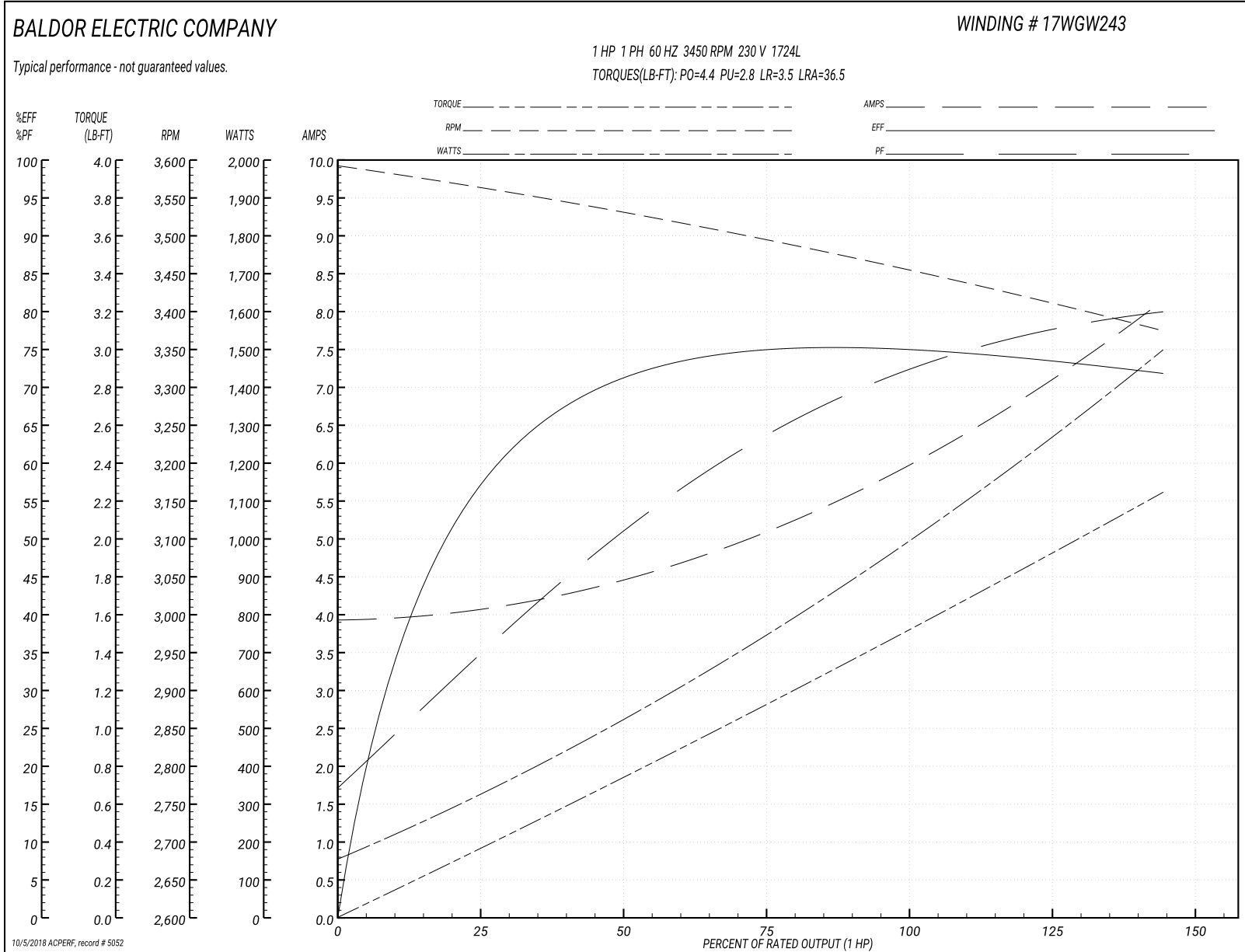
Winding: 17WGW243-R001	Type: 1724L	Enclosure: OPEN
-------------------------------	--------------------	------------------------

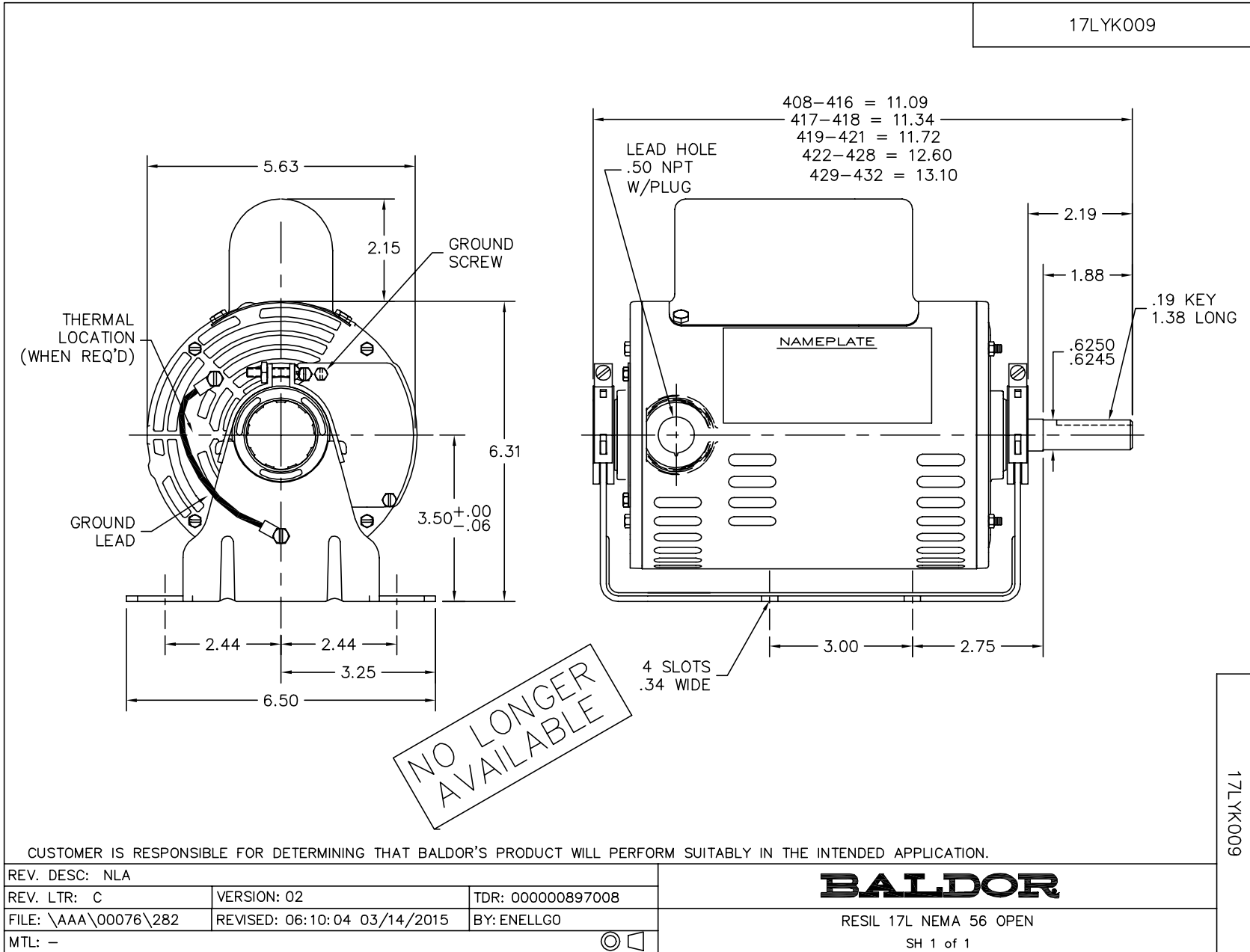
Nameplate Data				230 V, 60 Hz: High Voltage Connection	
Rated Output (HP)	1			Full Load Torque	1.5 LB-FT
Volts	115/230			Start Configuration	direct on line
Full Load Amps	11.8/5.9			Breakdown Torque	4.4 LB-FT
R.P.M.	3450			Pull-up Torque	2.8 LB-FT
Hz	60	Phase	1	Locked-rotor Torque	3.5 LB-FT
NEMA Design Code	N	KVA Code	K	Starting Current	36.5 A
Service Factor (S.F.)	1.25			No-load Current	3.9 A
NEMA Nom. Eff.	74	Power Factor	77	Line-line Res. @ 25°C	1.84 Ω A Ph 1.66 Ω B Ph
Rating - Duty	40C AMB-CONT			Temp. Rise @ Rated Load	51°C
S.F. Amps	13.8/6.9			Temp. Rise @ S.F. Load	68°C

Load Characteristics 230 V, 60 Hz, 1 HP

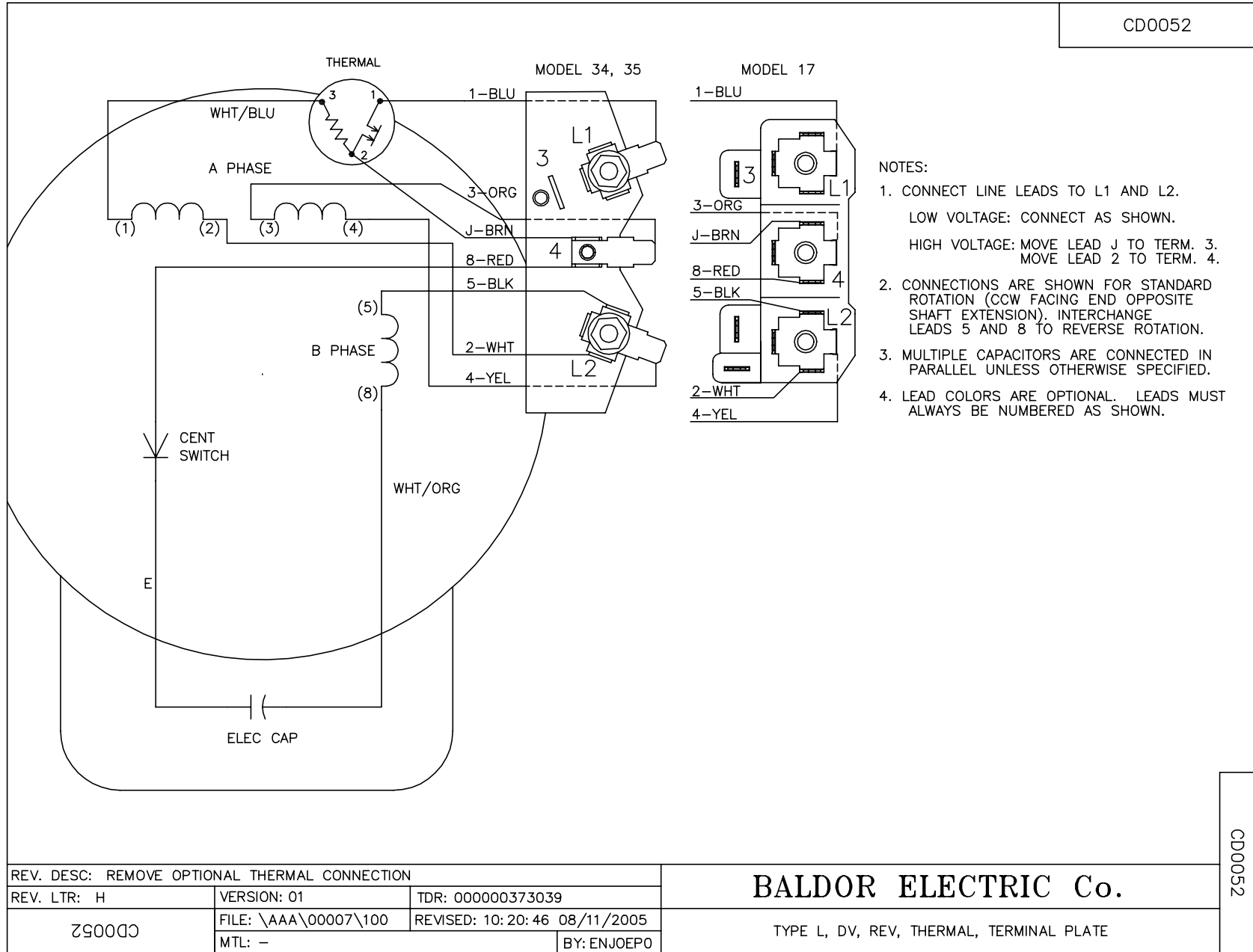
% of Rated Load	25	50	75	100	125	150	S.F.
Power Factor	44	57	71	77	83	87	0
Efficiency	59.4	71.9	73.9	75.2	73.7	71.9	0
Speed	3556	3527	3496	3462	3420	3370	0
Line amperes	4.1	4.5	5.1	5.9	6.9	8.2	6.9

Performance Graph at 230V, 60Hz, 1.0HP Typical performance - Not guaranteed values





CD0052



CD0052

REV. DESC: REMOVE OPTIONAL THERMAL CONNECTION		
REV. LTR: H	VERSION: 01	TDR: 000000373039
Z90052	FILE: \AAA\00007\100	REVISED: 10:20:46 08/11/2005
	MTL: -	BY: ENJOEPO

BALDOR ELECTRIC Co.

TYPE L, DV, REV, THERMAL, TERMINAL PLATE