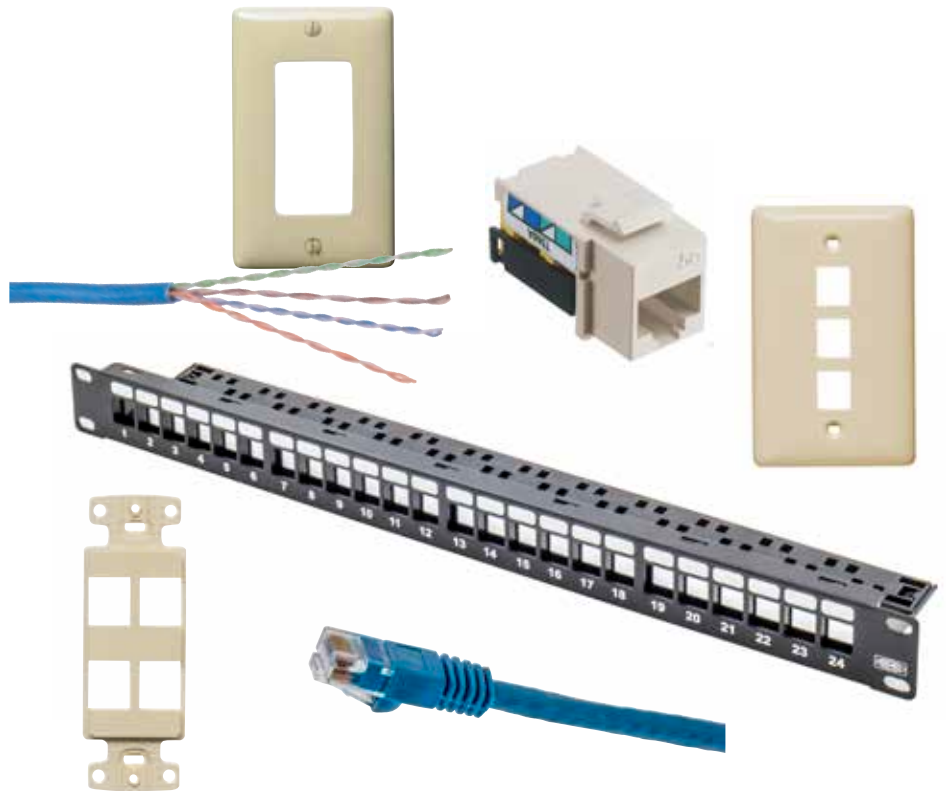


The netSELECT® Category 5e system provides a channel compliant solution that is perfect for residential and light commercial applications where cost efficiency is a priority. The netSELECT solution incorporates all the product quality you expect from Hubbell while providing installer friendly features that enhance installation speed. netSELECT jacks utilize Hubbell's Quicklace termination process and exclusive 1-punch tool to deliver the fastest, most consistent termination in the structured cabling industry. This innovative process reduces termination time by 75% and provides a consistent termination every time.

netSELECT provides a dependable, flexible and compliant system that can accommodate all of today's fast changing requirements.

STANDARDS

- ANSI/TIA-568.2-D Category 5e channel
- cULus Listed plates, jacks and cable
- RoHS compliant



Perfect solution for quick, easy, dependable installs | Installer focused designs prioritize efficiency and reliability | High value with high performance

PATCH CORDS

- Slim, snagless boot for high density ports
- PoE ready
- Conductor: 24AWG UTP
- Jacket: Flame-retardant PVC-CM rated

MULTIMEDIA FACEPLATES

- Smooth profile that matches electrical plates
- High impact-resistant thermoplastic frame

DECORATOR FRAMES

- Elongated strap for better wall box mounting
- High impact-resistant thermoplastic frame

CABLE

- Designed to work with Hubbell's NSJ5E jacks and NSC patch cords to deliver Category 5e channel performance

JACKS

- Supports Gigabit Ethernet
- Usable bandwidth meets TIA channel specifications
- Exclusive 1-punch tool delivers fastest and most consistent termination in the industry

PATCH PANELS

- Jack panel provides flexibility and expandability
- Steel frame with silk screened label fields
- Durable black powder coat finish
- Includes cable management bar and wire ties



netSELECT® Category 5e Jacks

	Catalog Number
Single pack	NSJ5Exx
25-pack	NSJ5Exx25
100-pack*	NSJ5Exx100



Snap Fit Jack
NSJ5EBK

xx = Color: **BK** (Black), **B** (Blue), **GY** (Gray), **GN** (Green), **I** (Ivory), **LA** (Light Almond), **OR** (Orange), **R** (Red), **W** (White) and **Y** (Yellow)
*Available in BK, B, LA, OR and W only.

Decorator Frames

	Catalog No.
	NS61pxx

p = Ports: **1, 2, 3, 4** and **6**
xx = Color: **BK** (Black), **GY** (Gray), **I** (Ivory), **LA** (Light Almond) and **W** (White)



2-Port
NS612I

Multimedia Face Plates, 1-Gang

Size	Catalog No.
Standard	NSP1pxx

p = Ports: **1, 2, 3, 4** and **6**
xx = Color: **BK** (Black), **GY** (Gray), **I** (Ivory), **LA** (Light Almond) and **W** (White)



3-Port, Standard
NSP13I

Decorator Faceplates

	Catalog No.
	NP26xx

xx = Color: **BK** (Black), **GY** (Gray), **I** (Ivory), **LA** (Light Almond) and **W** (White)



2-Port
NP26LA

Multimedia Face Plates, 2-Gang

Size	Catalog No.
Standard	NSP2pxx

p = Ports: **4** and **6**
xx = Color: **BK** (Black), **GY** (Gray), **I** (Ivory), **LA** (Light Almond) and **W** (White)



4-Port
NSP24I

netSELECT® Category 5e Patch Cords

	Catalog No.
Slim boot	NSC5Exxyy

xx = Color: **B** (Blue), **BK** (Black), **GY** (Gray) and **W** (White)
yy = Length (ft): **01', 03', 05', 07', 10'** and **15'**



1 foot
NSC5EB01

Category 5e UTP Cable

1000ft pull box	
Description	Catalog No.
Plenum	C5ERPxx
Riser	C5ERRxx

xx = Color: **B** (Blue), **GY** (Gray), and **W** (White)



Plenum
C5ERPGY

netSELECT® Unloaded Patch Panels

	Catalog No.
	NSPJpp
	NSPJ24

p = Ports: **24** and **48**

