

## Quick Connect Fittings

(Bauer style)  
Type B



**Type B male with hose shank**



**Type B female with hose shank with gasket**

**G**

Size	Galvanized Steel	
	Part #	Price/E
2"	<b>MC3092</b>	<b>\$43.50</b>
3"	<b>MC3093</b>	<b>69.50</b>
4"	<b>MC3094</b>	<b>124.90</b>
6"	<b>MC3096</b>	<b>219.25</b>
8"	<b>MC3098</b>	<b>422.00</b>
10"	<b>MC30910</b> <sup>1</sup>	<b>860.50</b>
12"	<b>MC30912</b> <sup>1</sup>	<b>1054.00</b>

Size	Galvanized Steel	
	Part #	Price/E
2"	<b>FC3102</b>	<b>\$24.50</b>
3"	<b>FC3103</b>	<b>33.00</b>
4"	<b>FC3104</b>	<b>57.00</b>
6"	<b>FC3106</b>	<b>97.50</b>
8"	<b>FC3108</b>	<b>185.60</b>
10"	<b>FC31010</b>	<b>376.75</b>
12"	<b>FC31012</b>	<b>483.70</b>

<sup>1</sup> 10" and 12" supplied with ACB304 lever assist bar



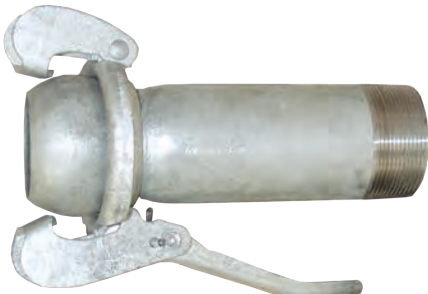
**Type B male with male NPT**



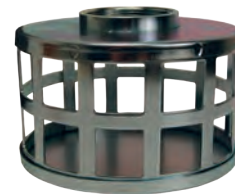
**Type B female with male NPT with gasket**

Size	Galvanized Steel	
	Part #	Price/E
2"	<b>MCM3112</b>	<b>\$60.50</b>
3"	<b>MCM3113</b>	<b>89.00</b>
4"	<b>MCM3114</b>	<b>149.75</b>
6"	<b>MCM3116</b>	<b>270.50</b>
8"	<b>MCM3118</b>	<b>525.00</b>

Size	Galvanized Steel	
	Part #	Price/E
2"	<b>FCM3122</b>	<b>\$40.50</b>
3"	<b>FCM3123</b>	<b>51.50</b>
4"	<b>FCM3124</b>	<b>83.25</b>
6"	<b>FCM3126</b>	<b>142.50</b>
8"	<b>FCM3128</b>	<b>293.00</b>



**Type B male with male NPT - extra long**



**Standard Strainer Square Hole Type**

Size	Galvanized Steel	
	Part #	Price/E
2"	<b>MCM3112XL</b>	<b>\$66.75</b>
3"	<b>MCM3113XL</b>	<b>102.60</b>
4"	<b>MCM3114XL</b>	<b>171.60</b>
6"	<b>MCM3116XL</b>	<b>326.50</b>
8"	<b>MCM3118XL</b>	<b>614.60</b>

NPT Size	Zinc Plated Steel	
	Part #	Price/E
2"	<b>SHS25</b>	<b>\$28.65</b>
3"	<b>SHS35</b>	<b>45.75</b>
4"	<b>SHS40</b>	<b>64.20</b>
6"	<b>SHS60</b>	<b>185.70</b>
8"	<b>SHS80</b>	<b>424.55</b>