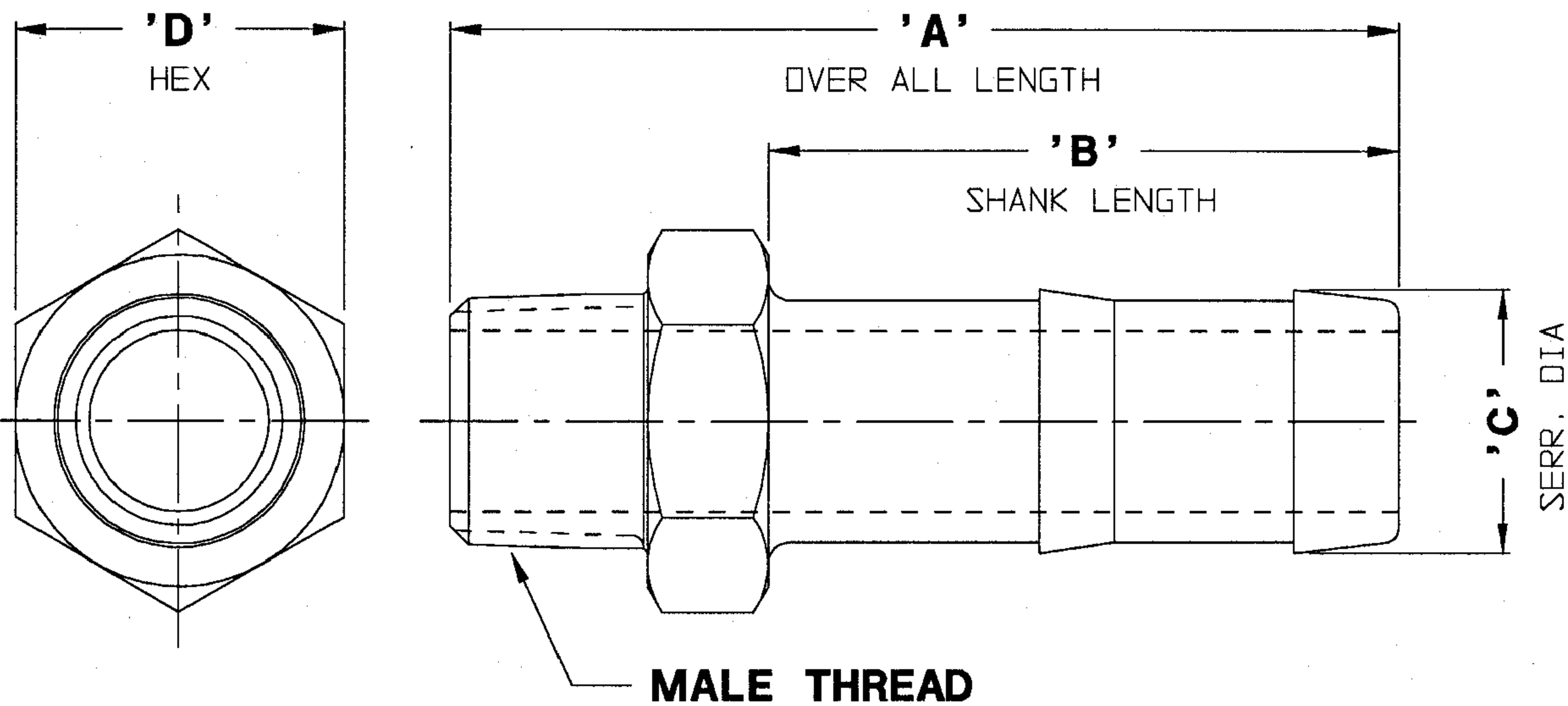


KHNXX2

8-14-08

CUSTOMER DWG



**AGREEMENT TO MAINTAIN CONFIDENTIALITY**

This drawing is owned by Dixon Valve & Coupling Co. and shall be returned upon demand. It is loaned on condition that it shall not be copied or reproduced or submitted to others without the owners consent. In accepting it subject to this condition the recipient further agrees that this drawing or any design detail or concept disclosed herein shall not be used in any way detrimental to or in competition with the Owner. If the recipient does not agree to the terms of this agreement, they shall return this drawing immediately.



CUSTOMER DWG

KHN882	4. 1/8	2. 5/8	1. 3/32	1. 3/8	1 NPT
KHN862	3. 15/16	2. 5/8	1. 3/32	1. 3/8	3/4 NPT
KHN662	3. 5/8	2. 3/8	27/32	1. 1/8	3/4 NPT
KHN642	3. 5/8	2. 3/8	27/32	1. 1/8	1/2 NPT
KHN462	3. 5/8	2. 3/8	19/32	1. 1/8	3/4 NPT
KHN442	3. 9/16	2. 3/8	19/32	7/8	1/2 NPT
KHN432	3. 3/8	2. 3/8	19/32	7/8	3/8 NPT
KHN422	3. 3/8	2. 3/8	19/32	7/8	1/4 NPT
KHN342	3. 9/16	2. 3/8	7/16	7/8	1/2 NPT
KHN332	3. 5/16	2. 3/8	7/16	11/16	3/8 NPT
KHN322	3. 5/16	2. 3/8	7/16	11/16	1/4 NPT
KHN222	3. 5/16	2. 3/8	11/32	9/16	1/4 NPT
<b>PART NO.</b>	<b>'A'</b>	<b>'B'</b>	<b>'C'</b>	<b>'D'</b>	<b>MALE THREAD</b>

**DIXON VALVE & COUPLING CO.**  
U. S. A.

TITLE

"KING" STEEL NIPPLES  
FOR TWO CLAMPS

DRAWN BY:

*Diane*

10/19/95

CHECKED BY:

*GW*

10-19-95

APPROVAL:

*[Signature]*  
10-19-95

MAT'L

CARBON STEEL HEX

**KHNXX2**