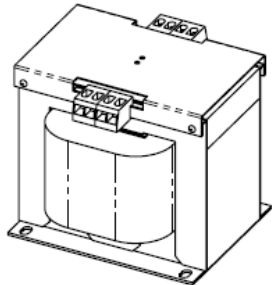
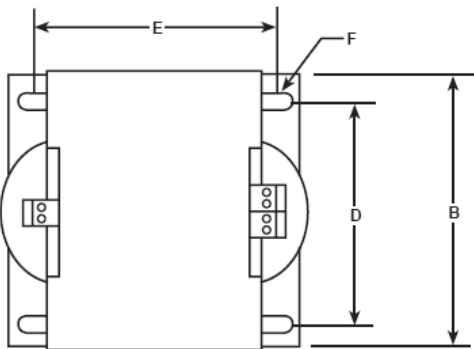


Revisions



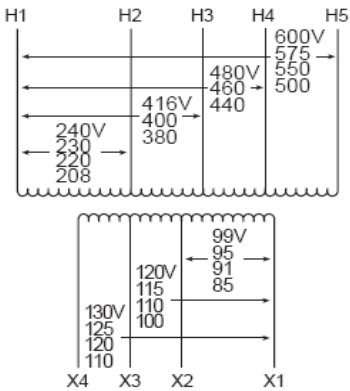
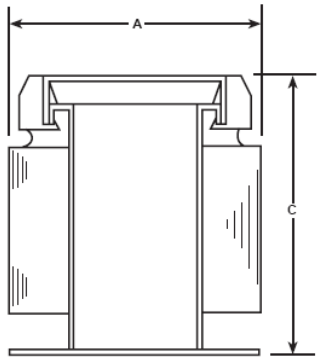
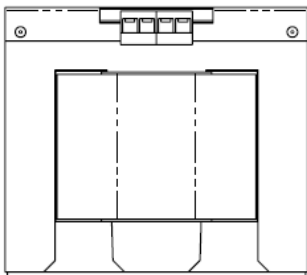
Type No.

Date: August 26, 2010



CONNECTION DETAILS FOR GROUP C

CONNECT TO LINE FOR RESPECTIVE VOLTAGE				OUTPUT VOLTS		
H1-H2	H1-H3	H1-H4	H1-H5	X1-X2	X1-X3	X1-X4
208	—	—	500	85	100	110
220	380	440	550	91	110	120
230	400	460	575	95	115	125
240	416	480	600	99	120	130



VA	CATALOG NUMBER	VOLTAGE		WIRING DIAGRAM	WEIGHT	PHASE	FREQ.
		HIGH	LOW				
1000	<b>FS-3-1000</b>	See Diagram	See Diagram		39 Lbs	1φ	50/60 Hz

Temp. Rise:	80°C
Insulation:	130°C
Windings:	CU

TYPICAL PERFORMANCE DATA

Standard	UL/CSA/CE	Impedance:	
----------	-----------	------------	--

Typical Efficiency:	
Full Load Losses	
No Load Losses	

**FINGER/GUARD**

A	B	C	D	E	F				
6.18	6.75	6.03	5.75	4.30	.31 x .50				

					<b>A</b>	PRINTS TO	<b>CONTROL 7</b>
--	--	--	--	--	----------	-----------	------------------