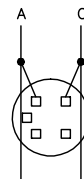


KNOCKOUTS		
SYMBOL	CONDUIT SIZE	
	IN	MM
A	.50	13
B	.75	19
C	1.00	25
D	1.25	32
E	1.50	38

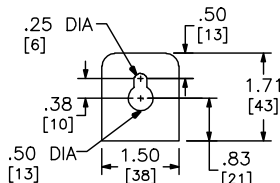


EACH SOCKET LINE CONNECTOR MAY BE MOVED TO BALANCE LOADING. PHASE AC, BC OR AB. THIS DEVICE LEAVES THE FACTORY PHASED AC IN ALL POSITIONS TOP TO BOTTOM

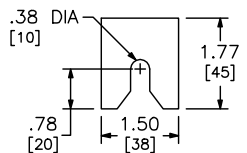
DELTA UNITS ARE SUPPLIED WITH ALL METER SOCKETS POSITIONS CONNECTED TO A-PHASE AND C-PHASE ONLY. B-PHASE VERTICAL BUS HAS BEEN REMOVED FROM THIS DEVICE.

DELTA UNIT WITH HORIZONTAL CROSS BUS RATED 800A CONTINUOUS, ADD SUFFIX "CA" TO CATALOG NUMBER (SUFFIX "CA" UNIT IS SUPPLIED WITH ALL ALUMINUM BUSSING).

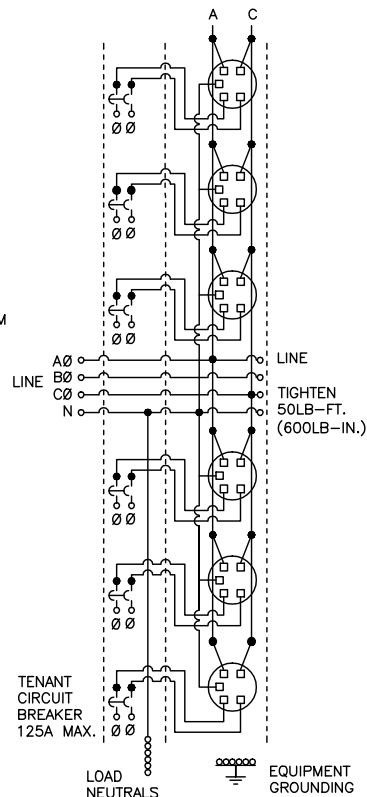
DELTA UNIT WITH HORIZONTAL CROSS BUS RATED 1200A CONTINUOUS, ADD SUFFIX "CAX" OR SUFFIX "CUXCA" TO CATALOG NUMBER. (SUFFIX "CAX" UNIT IS SUPPLIED WITH ALUMINUM AND COPPER BUSSING). (SUFFIX "CUXCA" UNIT IS SUPPLIED WITH ALL COPPER BUSSING).



TOP MOUNTING BRACKET



BOTTOM MOUNTING BRACKET



EZ METER-PAK GANGABLE
MULTI-METERING EQUIPMENT
125A MAX 3PH 4W METER SOCKET/CIRCUIT BREAKER
6-GANG BRANCH UNITS
RAINPROOF NEMA TYPE 3R ENCLOSURES

DWG# 3413

by Schneider Electric

NOTES:
FINISH - GRAY BAKED ENAMEL POWDER COAT PAINT OVER CLEANED GALVANNEALED STEEL.
UL LISTED AS A MODULAR-PANELBOARD - FILE E131840, VOL. M
SUITABLE FOR USE AS SERVICE EQUIPMENT.
UNMETERED COMPARTMENTS ARE SEALABLE BY UTILITY.
SEE MARKINGS ON TENANT CIRCUIT BREAKER FOR WIRE RANGES.
GANGABLE MULTI-METERING EQUIPMENT IS DESIGNED FOR WALL MOUNTING ONLY
(NOT SUITABLE FOR USE AS FLOOR STANDING EQUIPMENT).

DUAL DIMENSIONS: INCHES
MILLIMETERS

SYSTEM TYPE (IN)	SERVICE PROVIDED (OUT)	CATALOG NUMBER	METER SOCKET TYPE	NUMBER OF POSITIONS	TENANT CIRCUIT BREAKER (ORDER SEPARATELY)	LOAD NEUTRAL WIRE RANGE	EQUIPMENT GROUND WIRE RANGE
3Ø 4W 240/120VAC DELTA	1Ø 3W 120/240VAC	EZM316125CA EZM316125CAX EZM316125CUXCA	5-JAW RING TYPE WITHOUT BYPASS	6	QO, QO-VH, OR QOH 125A MAX 2-POLE	(6) #14-2/0 AWG CU (6) #12-2/0 AWG AL	(6) #14-2/0 AWG CU (6) #12-2/0 AWG AL
		EZMR316125CA EZMR316125CAX EZMR316125CUXCA	5-JAW RINGLESS TYPE WITHOUT BYPASS				
		EZMH316125CA EZMH316125CAX EZMH316125CUXCA	5-JAW RINGLESS TYPE WITH HORN BYPASS				