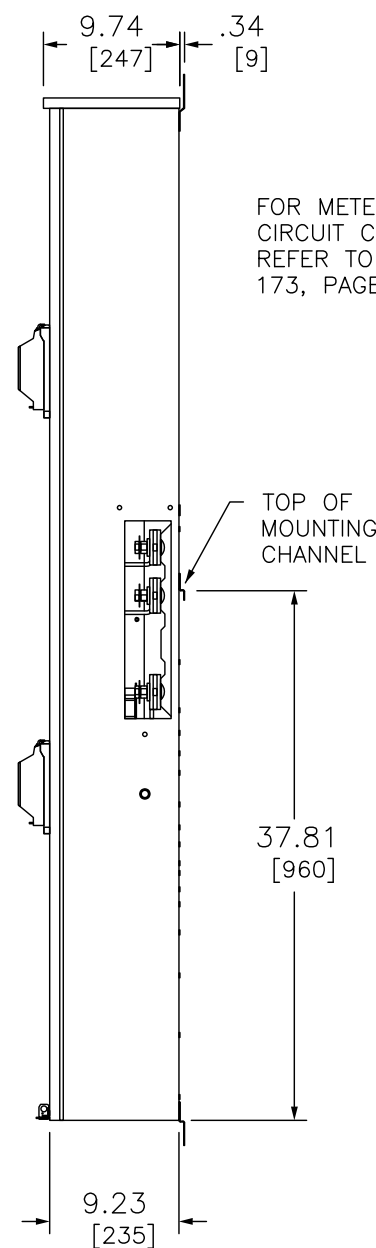
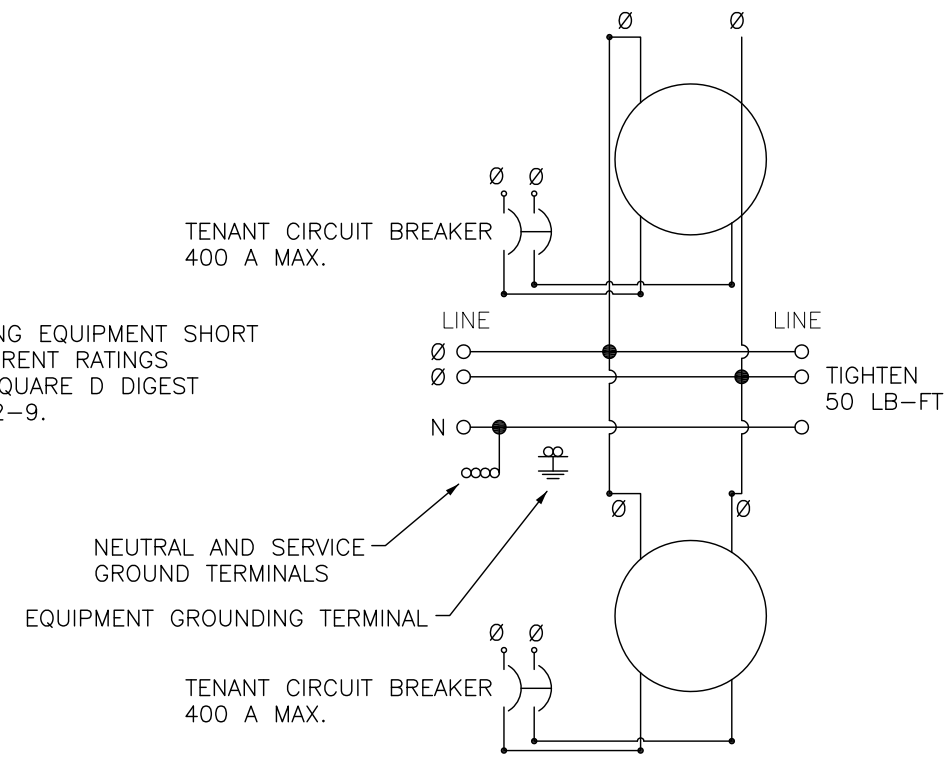


EZMK112400

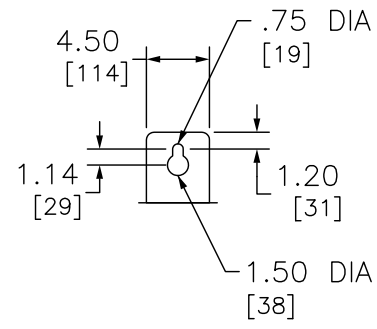
NOTES:  
FINISH: GRAY BAKED ENAMEL POWDER COAT PAINT OVER CLEANED GALVANNEALED STEEL.  
UL LISTED - FILE E-131840, VOL M  
SUITABLE FOR USE AS SERVICE EQUIPMENT.  
MAIN HORIZONTAL CROSS BUS RATED 1200A.  
100,000 RMS SYMMETRICAL AMPERES MAXIMUM SHORT CIRCUIT CURRENT RATING.  
UNMETERED COMPARTMENTS ARE SEALABLE BY UTILITY.  
GANGABLE MULTI-METERING EQUIPMENT IS DESIGNED FOR WALL MOUNTING ONLY (NOT SUITABLE FOR USE AS FLOOR STANDING EQUIPMENT).



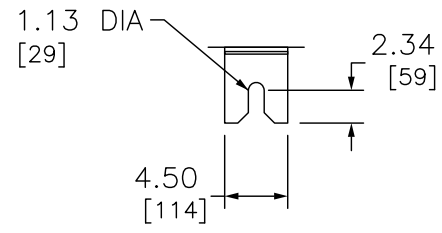
FOR METERING EQUIPMENT SHORT CIRCUIT CURRENT RATINGS REFER TO SQUARE D DIGEST 173, PAGE 2-9.



K-4 BOLT-ON METER SOCKET



TOP MOUNTING BRACKET



BOTTOM MOUNTING BRACKET

SYSTEM TYPE (IN)	SERVICE PROVIDED (OUT)	MAIN BUS RATING	CATALOG NUMBER	METER SOCKET TYPE	NUMBER OF POSITIONS
3PH-4W 120/240 VAC	1PH-3W 120/240 VAC	1200 A	EZMK112400	K-4 SELF-CONTAINED. BOLT-ON SOCKET	2

TENANT CIRCUIT BREAKER INCLUDED FACTORY INSTALLED	POLES	AMPERE RATING	NEUTRAL AND SERVICE GROUND WIRE RANGE	EQUIPMENT GROUNDING WIRE RANGE
LJL36400U31X	3 *	400	(2) 1/0-600 KCMIL CU/AL OR (4) 1/0-250 KCMIL CU/AL	(2) #6-2/0 AWG CU/AL

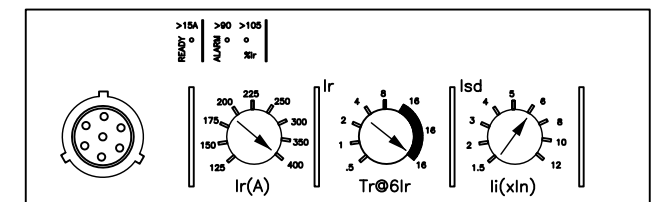
\* NOTE: THIS SINGLE PHASE APPLICATION REQUIRES USE OF OUTSIDE TWO POLES OF TYPE LJL CIRCUIT BREAKERS ONLY.

FACTORY INSTALLED TYPE LJL CIRCUIT BREAKER HAS AN ADJUSTABLE TRIP AMPERE RATING RANGING FROM 125A TO 400A PER TABLE BELOW. EXACT AMPERE RATING MAY NOT BE ATTAINABLE. EXAMPLES:  
225A (AVAILABLE SETTINGS 223A OR 228A)  
250A (AVAILABLE SETTINGS 246A OR 252A)  
300A (AVAILABLE SETTINGS 297A OR 304A)  
350A (AVAILABLE SETTINGS 340A OR 352A)

CIRCUIT BREAKER TYPE	STANDARD LUG WIRE RANGE (AWG-KCMIL)	OPTIONAL LUG WIRE RANGE (AWG-KCMIL)
LJL	(2) 2/0-500 CU-AL	#2-600 CU #2-500 AL

OPTIONAL LUG KIT CATALOG NUMBER: AL400L61K3 (KIT INCLUDES 3 LUGS) ORDER SEPARATELY.

LJL36400U31X



ADJUSTABLE SHORT TIME TRIP RANGE SETTING IS FACTORY SET AT Isd=6. WITH BREAKER AMPERE RATING SET FOR 400A, THE SHORT TIME TRIP RATING FOR THE BREAKER IS SET AT 2400 (6X400AMP=2400AMP).

OPTIONAL TAMPER EVIDENT SEALING KIT REF. 29375 IS AVAILABLE FOR INSTALLATION ON THE CLEAR DIAL COVER, KIT INCLUDES SCREW HEAD COVER, SEALING WIRE, LEAD CRIMP SEAL AND INSTALLATION INSTRUCTION.(REFER TO. NEC2002, ARTICLE 240-6C)

DUAL DIMENSIONS: INCHES [MILLIMETERS]

TWO POSITION EZ METER-PAK METERING EQUIPMENT  
NEMA TYPE 3R ENCLOSURE  
400A TENANT CIRCUIT BREAKER  
SUPPLIED FACTORY INSTALLED

by Schneider Electric

DWG# 3284  
NO.