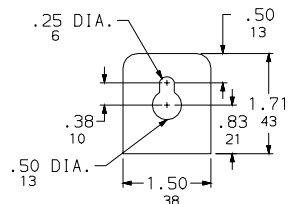
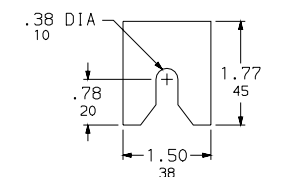


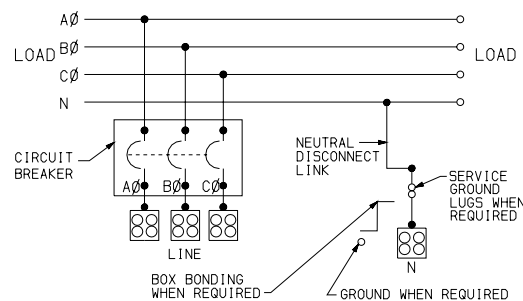
ADDITIONAL NOTES:
 WHEN USED AS SERVICE EQUIPMENT, INSTALL BONDING STRAP, REINSTALL GROUND LUG WHERE APPROPRIATE.
 ● HANDLE EXTENSION AVAILABLE, ORDER KIT AHXL1, HANDLE IS HINGED, ALLOWING IT TO BE TUCKED UNDER THE DOOR ON THE COVER.
 ▲ THIS LUG IS AVAILABLE FROM SQUARE D. ORDER CATALOG NUMBER CMLK4, KIT INCLUDES 4 LUGS.
 ‡ INDICATED VERSA-CRIMP CRIMPING TOOL.



TOP MOUNTING BRACKET



BOTTOM MOUNTING BRACKET



KNOCKOUTS		
SYMBOL	CONDUIT SIZE	
	IN	MM
A	.50	13
B	.75	19
E	1.50	38
F	2.00	51
G	2.50	64
H	3.00	76
I	3.50	89
J	4.00	102

DUAL DIMENSIONS, INCHES
MILLIMETERS

ALTERNATE LUG QUANTITY PER LINE SIDE PHASE AND NEUTRAL TERMINALS (ORDER SEPARATELY)								
CATALOG NUMBER	ANDERSON			ILSCO		CMC		
	VHCL-600-12BN	VHCL-750-12BN	L1D2-600	2ACL-600	TA-600-2N ▲	AU-600-2N (2 BARREL)	A1B2-600-2	2AB2-600 (2 BARREL)
	250-600 CU	500-750 CU	#2-600 AL/CU	250-600 AL/CU	#2-600 AL/CU	(2) #2-600 AL/CU	#2-600 AL/CU	(2) #2-600 AL/CU
	VC-6 ‡	VC-7 ‡	MECH	IDT-12	MECH	MECH	MECH	MECH
EZM3600CBU	2	2	2	2	2	1	2	1
EZM3800CBU	2	2	2	2	2	1	2	1

SYSTEM TYPE	MAIN RATING (AMPERES)	CATALOG NUMBER	MAIN CIRCUIT BREAKER (FACTORY INSTALLED)	LINE PHASE AND NEUTRAL LUG LANDING PADS PROVIDED FOR USE WITH CRIMP-TYPE LUGS (2-HOLE MOUNTING) QUANTITY OF LUGS PER PAD.	GROUND LUG WIRE RANGE (FACTORY INSTALLED)
3Ø 4W 208Y/120VAC OR 240/120VAC DELTA	600	EZM3600CBU	MHF36600 ●	2 (ORDER LUGS SEPARATELY)	(1) #6-300
	800	EZM3800CBU	MHF36800 ●	2 (ORDER LUGS SEPARATELY)	(1) #6-300

NOTES:
 FINISH - GRAY BAKED ENAMEL POWDER COAT PAINT OVER CLEANED GALVANNEALED STEEL.
 UL LISTED - FILE E-10582, VOL. M, E-131840, VOL. M
 SUITABLE FOR USE AS SERVICE EQUIPMENT.
 MAIN HORIZONTAL CROSS BUS RATED AT 800 AMPERES.
 MAIN DEVICES ARE SEALABLE BY UTILITY.
 GANGABLE MULTI-METERING EQUIPMENT IS DESIGNED FOR WALL MOUNTING ONLY.
 (NOT SUITABLE FOR FLOOR STANDING EQUIPMENT.)
 *MEETS EUSERC STANDARDS FOR WEST COAST BASED UTILITIES.

EZ METER-PAK GANGABLE
 MULTI-METERING EQUIPMENT
 600A/800A 3Ø 4W MAIN CIRCUIT BREAKER DEVICES
 UNDERGROUND FEED ONLY
 RAINPROOF NEMA TYPE 3R ENCLOSURES

SQUARE D COMPANY

DWG. NO. 3115