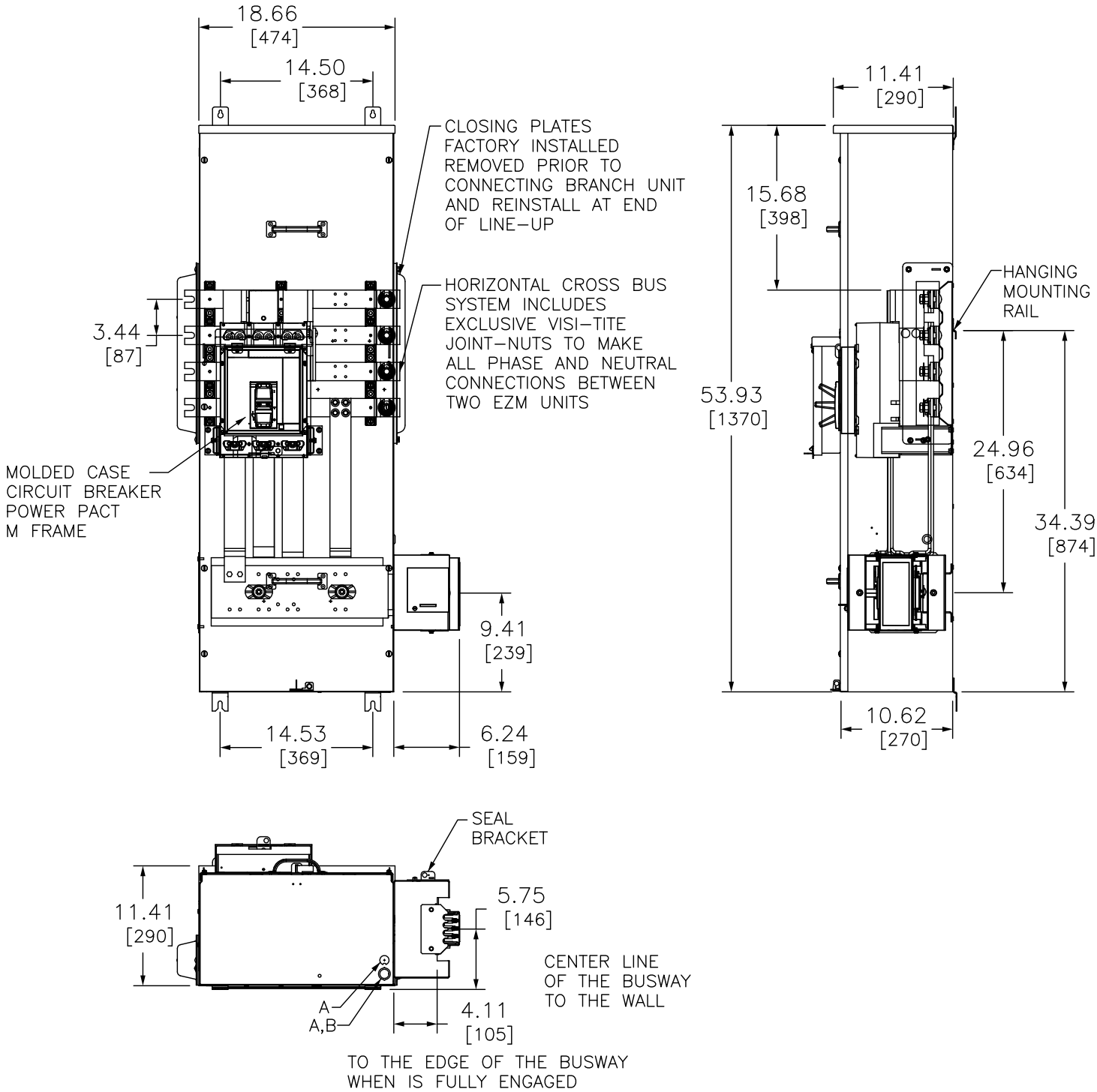


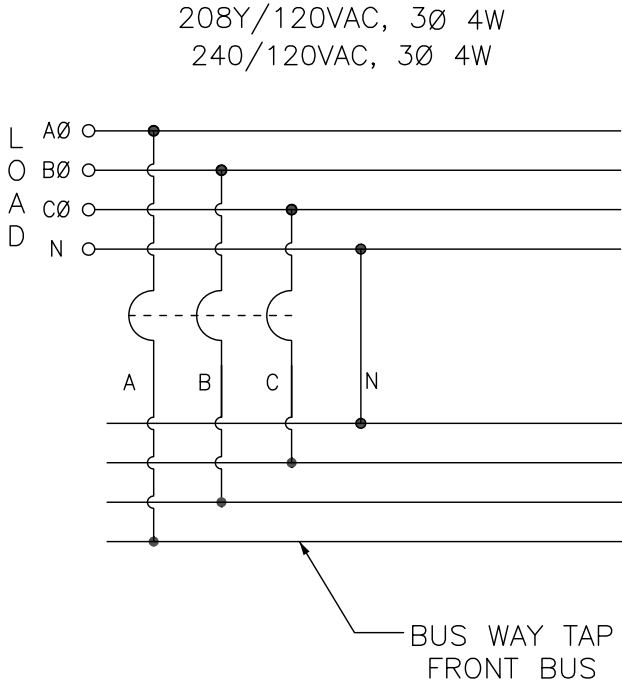
ADDITIONAL NOTES :

- HANDLE EXTENSION AVAILABLE M-FRAME BREAKER  
ORDER KIT REF. 33195

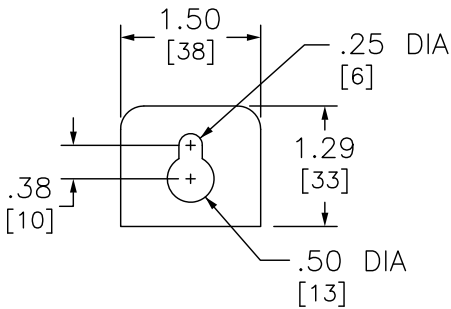
KNOCKOUTS		
SYMBOL	CONDUIT SIZE	
	IN	MM
A	.50	13
B	.75	19



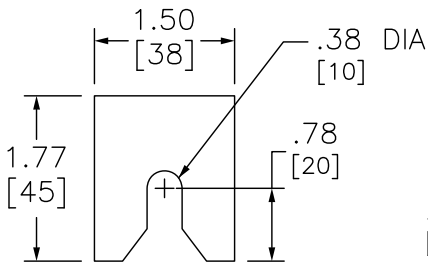
TIGHTEN  
50 LB-FT  
(600 LB-IN)



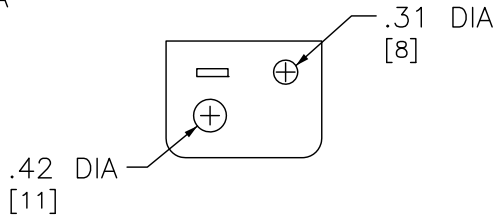
TIGHTEN  
70 LB-FT  
(840 LB-IN)



TOP MOUNTING  
BRACKET



BOTTOM MOUNTING  
BRACKET



SEAL BRACKET

DUAL DIMENSIONS: INCHES  
MILLIMETERS

SYSTEM TYPE	MAIN RATING (AMPERES)	CATALOG NUMBER	MOLDED CASE BREAKER (FACTORY INSTALLED) INTERRUPTING RATING 65kA @ 240V
3Ø 4W 208Y/120VAC OR 240/120VAC DELTA	600	EZM3600CBNBBTR	MGF36600
	800	EZM3800CBNBBTR	MGF36800

NBBTR SUFFIX MEANS [NEUTRAL BACK BUS TAP RIGHT]

NOTES:  
FINISH - GRAY BAKED ENAMEL POWDER COAT PAINT OVER CLEANED GALVANNEALED STEEL.  
UL LISTED - FILE E131840, VOL. M  
MAIN HORIZONTAL CROSS BUS RATED AT 800 AMPERES. ALUMINUM 1/4 x 1-3/4 TWO LAMINATIONS  
MAIN DEVICES ARE SEALABLE BY UTILITY.  
GANGABLE MULTI-METERING EQUIPMENT IS DESIGNED FOR WALL MOUNTING ONLY.  
(NOT SUITABLE FOR FLOOR STANDING EQUIPMENT.)  
800AMP MAIN CIRCUIT BREAKER SUITABLE FOR USE ONLY WITH BRANCH DEVICES.  
GROUND CONTINUITY IS MAINTAINED THROUGH THE ENCLOSURE WITH BUSWAY BONDING BRACKETS.

EZ METER-PAK GANGABLE  
MULTI-METERING EQUIPMENT  
600A-800A 3PH 4W MAIN CIRCUIT BREAKER  
BUSWAY FEED RIGHT SIDE  
INDOOR TYPE 1 ENCLOSURE

**SQUARE D**  
by Schneider Electric

DWG# PWFDS-SYRS-0125  
NO.