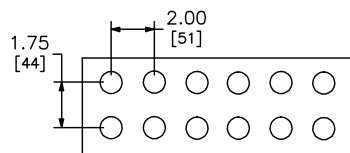


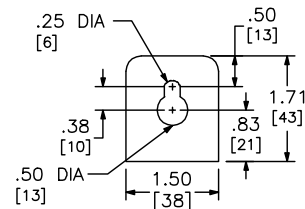
NO KNOCKOUTS PROVIDED



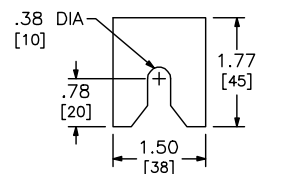
LUG PAD DETAIL

SUPPLIED WITH 1/2-13 X 2.00/[51] STUDS  
AND 1/2 - 13 KEPS NUTS

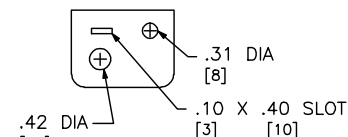
NOTES:  
FINISH - GRAY BAKED ENAMEL POWDER COAT PAINT OVER CLEANED GALVANNEALED STEEL.  
UL LISTED - FILE E131840, VOL. M  
SUITABLE FOR USE AS SERVICE EQUIPMENT.  
MAIN HORIZONTAL CROSS BUS RATED AT 1200 AMPERES.  
MAIN DEVICES ARE SEALABLE BY UTILITY.  
GANGABLE MULTI-METERING EQUIPMENT IS DESIGNED FOR WALL MOUNTING ONLY.  
(NOT SUITABLE FOR FLOOR STANDING EQUIPMENT.)  
DOES NOT MEET EUSERC REQUIREMENTS.



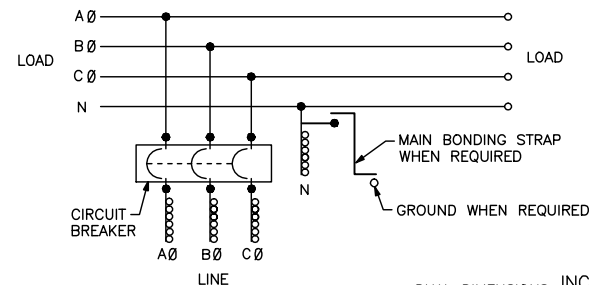
TOP MOUNTING BRACKET



BOTTOM MOUNTING BRACKET



SEAL BRACKET



DUAL DIMENSIONS: INCHES  
MILLIMETERS

| THE FOLLOWING LUGS MAY BE INSTALLED ON THE LINE LUG PADS<br>LUG QUANTITY PER LINE SIDE PHASE AND NEUTRAL TERMINALS (ORDER SEPARATELY) |                       |                       |                 |                   |                  |                 |                   |                    |                   |
|---|-----------------------|-----------------------|-----------------|-------------------|------------------|-----------------|-------------------|--------------------|-------------------|
| CATALOG<br>NUMBER   | ANDERSON              |                       |                 |                   | ILSCO            |                 |                   | CMC                |                   |
|   | VHCL-<br>600-<br>12BN | VHCL-<br>750-<br>12BN | L1D2-<br>600    | L1D2-<br>800      | 2ACL-<br>600     | TA-600-<br>2N ▲ | TA-800-<br>2N     | A1B2-<br>600-<br>2 | L1D2-<br>600      |
|   | 250-600<br>CU         | 500-750<br>CU         | #2-600<br>AL/CU | #300-750<br>AL/CU | 250-600<br>AL/CU | #2-600<br>AL/CU | #300-750<br>AL/CU | #2-600<br>AL/CU    | #300-750<br>AL/CU |
|   | VC-6 ‡                | VC-7 ‡                | MECH            | MECH              | IDT-12           | MECH            | MECH              | MECH               | MECH              |
| EZM32000CBU   | 6                     | 6                     | 6               | 6                 | 6                | 6               | 6                 | 6                  | 6                 |

‡ INDICATED VERSA-CRIMP CRIMPING TOOL.

▲ THIS LUG IS AVAILABLE FROM SQUARE D COMPANY, ORDER CATALOG NUMBER CMLK4, KIT INCLUDES 4 LUGS

| SYSTEM<br>TYPE                              | MAIN<br>RATING<br>(AMPERES) | CATALOG<br>NUMBER | MAIN CIRCUIT<br>BREAKER<br>(FACTORY<br>INSTALLED) | GROUND LUG<br>WIRE RANGE<br>(FACTORY INSTALLED) |
|---|-----------------------------|-------------------|---|---|
| 3Ø 4W<br>208Y/120VAC OR<br>240/120VAC DELTA | 2000 ●<br>*                 | EZM32000CBU       | RJF36200  | (1) #6-300                                      |

● 2000A MAIN CIRCUIT BREAKER DEVICE MUST BE CENTER MOUNTED.

\* 2000A MAIN REQUIRES THE USE OF 1200A HORIZONTAL CROSS BUS ON THE BRANCH UNITS.

EZ METER-PAK GANGABLE  
MULTI-METERING EQUIPMENT  
2000A, 3PH 4W MAIN CIRCUIT BREAKER DEVICE  
UNDERGROUND FEED ONLY  
RAINPROOF NEMA TYPE 3R ENCLOSURE

**SQUARE D**  
by **Schneider Electric**

DWG# 3356  
NO.