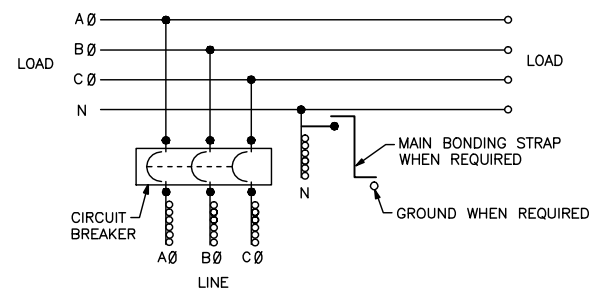
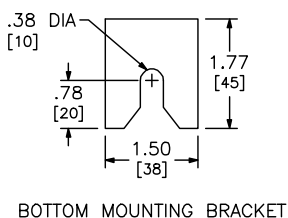
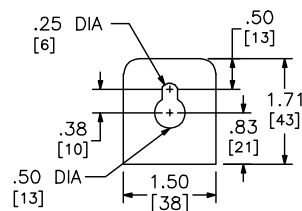
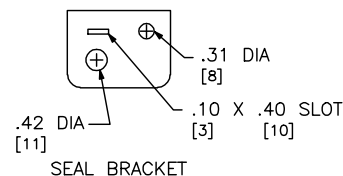


NO KNOCKOUTS PROVIDED



DUAL DIMENSIONS: INCHES
MILLIMETERS

ALTERNATE LUG QUANTITY PER LINE SIDE PHASE AND NEUTRAL TERMINALS (ORDER SEPARATELY)			
CATALOG NUMBER	ANDERSON		ILSCO
	VHCL- 600- 12BN	VHCL- 750- 12BN	2ACL- 600
	250-600 CU	500-750 CU	250-600 AL/CU
	VC-6 $\frac{3}{4}$	VC-7 $\frac{3}{4}$	IDT-12
EZM32000CB	6	6	6

$\frac{3}{4}$ INDICATED VERSA-CRIMP CRIMPING TOOL.

SYSTEM TYPE	MAIN RATING (AMPERES)	CATALOG NUMBER	MAIN CIRCUIT BREAKER (FACTORY INSTALLED)	LINE SIDE PHASE LUG WIRE RANGE FOR AL OR CU CONDUCTORS (SUPPLIED WITH BREAKER)	LINE SIDE NEUTRAL LUG WIRE RANGE FOR AL OR CU CONDUCTORS (FACTORY INSTALLED)	GROUND LUG WIRE RANGE (FACTORY INSTALLED)
3Ø 4W 208Y/120VAC OR 240/120VAC DELTA	2000 ● *	EZM32000CB	RJF36200	(6) 1/0-750 OR (12) 1/0-250	(6) 1/0-750 OR (12) 1/0-250	(1) #6-300

● 2000A MAIN CIRCUIT BREAKER DEVICE MUST BE CENTER MOUNTED.

* 2000A MAIN REQUIRES THE USE OF 1200A HORIZONTAL CROSS BUS ON THE BRANCH UNITS.

NOTES:
FINISH - GRAY BAKED ENAMEL POWDER COAT PAINT OVER CLEANED GALVANNEALED STEEL.
UL LISTED - FILE E131840, VOL. M
SUITABLE FOR USE AS SERVICE EQUIPMENT.
MAIN HORIZONTAL CROSS BUS RATED AT 1200 AMPERES.
MAIN DEVICES ARE SEALABLE BY UTILITY.
GANGABLE MULTI-METERING EQUIPMENT IS DESIGNED FOR WALL MOUNTING ONLY.
(NOT SUITABLE FOR FLOOR STANDING EQUIPMENT.)

EZ METER-PAK GANGABLE
MULTI-METERING EQUIPMENT
2000A, 3PH 4W MAIN CIRCUIT BREAKER DEVICE
OVERHEAD/UNDERGROUND FEED
RAINPROOF NEMA TYPE 3R ENCLOSURE

SQUARE D
by **Schneider Electric**

DWG# 3357
NO.