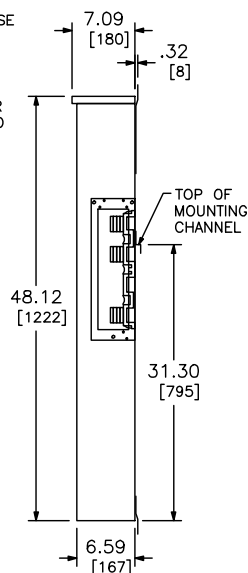
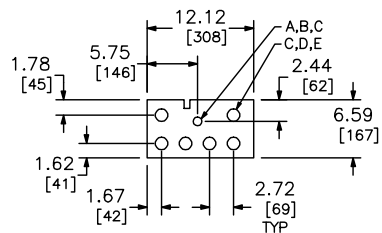


SUPPLIED WITH DRIP HOOD FOR USE OUTDOORS (NEMA 3R). DRIP HOOD IS REMOVABLE WHEN USED INDOORS (NEMA 1). A FACTORY INSTALLED TO ENDWALL WITH KNOCKOUT SIMILAR TO BOTTOM ENDWALL IS SUPPLIED FOR CABLE EXITS OUT THE TOP.

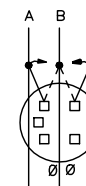
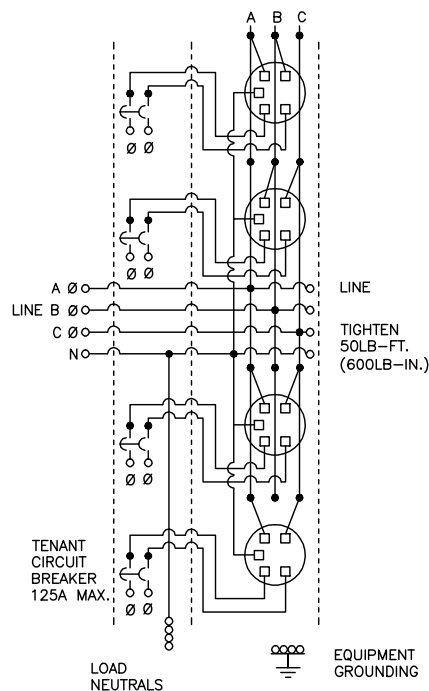
HORIZONTAL CROSS BUS SYSTEM INCLUDES EXCLUSIVE VSI-TITE JOINT-NUTS TO MAKE ALL PHASE AND NEUTRAL CONNECTIONS BETWEEN TWO EZM UNITS.



HORIZONTAL CROSS BUS RATED 1200A CONTINUOUS.  
ADD SUFFIX "X" OR SUFFIX "CUX" TO CATALOG NUMBER.  
(SUFFIX "X" UNIT IS SUPPLIED WITH ALUMINUM AND COPPER BUSSING.)  
(SUFFIX "CUX" UNIT IS SUPPLIED WITH ALL COPPER BUSSING.)

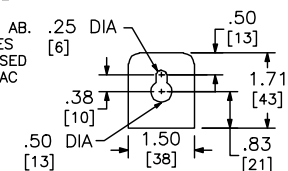


NOTES:  
FINISH - GRAY BAKED ENAMEL POWDER COAT PAINT OVER CLEANED GALVANNEALED STEEL.  
UL LISTED AS A MODULAR-PANELBOARD - FILE E131840, VOL. M SUITABLE FOR USE AS SERVICE EQUIPMENT.  
WHEN SERVICE GROUND IS TERMINATED IN THIS DEVICE A BONDING JUMPER (2/0 AWG MAX) IS REQUIRED TO CONNECT EQUIPMENT GROUND TO LOAD NEUTRAL AND IS LIMITED FOR USE WITH 800A MAX MAIN LUGS TAP BOX.  
UNMETERED COMPARTMENTS ARE SEALABLE BY UTILITY.  
SEE MARKINGS ON TENANT CIRCUIT BREAKER FOR WIRE RANGES.  
GANGABLE MULTI-METERING EQUIPMENT IS DESIGNED FOR WALL MOUNTING ONLY (NOT SUITABLE FOR USE AS FLOOR STANDING EQUIPMENT).

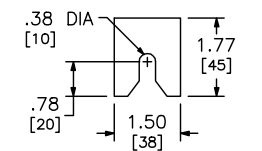


EACH SOCKET LINE CONNECTOR MAY BE MOVED TO BALANCE LOADING.  
PHASE AC, BC OR AB. THIS DEVICE LEAVES THE FACTORY PHASED AB, BC, AC, AND AC TOP TO BOTTOM.

KNOCKOUTS		
SYMBOL	CONDUIT SIZE	
	IN	MM
A	.50	13
B	.75	19
C	1.00	25
D	1.25	32
E	1.50	38



TOP MOUNTING BRACKET



BOTTOM MOUNTING BRACKET

DUAL DIMENSIONS: INCHES  
MILLIMETERS

SYSTEM TYPE (IN)	SERVICE PROVIDED (OUT)	CATALOG NUMBER	METER SOCKET TYPE	NUMBER OF POSITIONS	TENANT CIRCUIT BREAKER (ORDER SEPARATELY)	LOAD NEUTRAL WIRE RANGE	EQUIPMENT GROUND WIRE RANGE
3Ø 4W 208Y/120VAC	1Ø 3W 120/208VAC	EZM314125X EZM314125CUX	5-JAW RING TYPE WITHOUT BYPASS	4	QO,QO-VH,OR QOH 125A MAX 2-POLE	(4) #14-2/0 AWG CU (4) #12-2/0 AWG AL	(4) #14-2/0 AWG CU (4) #12-2/0 AWG AL

EZ METER-PAK GANGABLE  
MULTI-METERING EQUIPMENT  
125A MAX 3PH 4W METER SOCKET/CIRCUIT BREAKER  
4-GANG BRANCH UNITS  
RAINFOOF NEMA TYPE 3R ENCLOSURES



DWG# 3418  
NO.