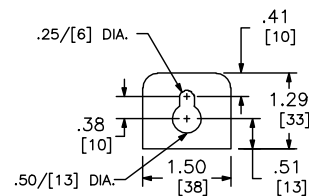
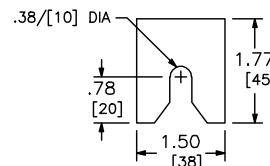


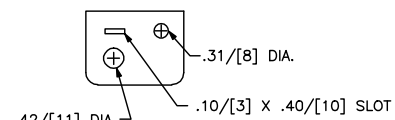
- ADDITIONAL NOTES:
- ◆ ALTERNATE LUG KITS ARE AVAILABLE FOR USE ON LINE SIDE OF MOLDED CASE FUSIBLE SWITCH (REFER TO DIGEST 175, PAGE 7-39).
 - ▼ ALTERNATE NEUTRAL LUG AVAILABLE, ORDER ONE (1)KIT, MMLK250 FOR (1) #1/0 AWG-600 KCMIL OR (2) #1/0 AWG-250 KCMIL AL/CU (KIT INCLUDES THREE, 2-BARREL LUGS), NEUTRAL WILL ACCOMMODATE TWO, 2-BARREL LUGS ONLY.



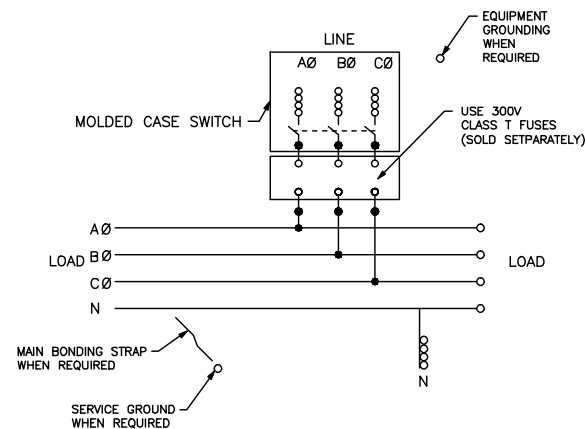
TOP MOUNTING BRACKET



BOTTOM MOUNTING BRACKET



SEAL BRACKET



NOTES:
FINISH - GRAY BAKED ENAMEL POWDER COAT PAINT OVER CLEANED GALVANNEALED STEEL.
UL LISTED - FILE E131840, VOL. M
SUITABLE FOR USE AS SERVICE EQUIPMENT.
MAIN HORIZONTAL CROSS BUS RATED AT 1200 AMPERES.
MAIN DEVICES ARE SEALABLE BY UTILITY.
GANGABLE MULTI-METERING EQUIPMENT IS DESIGNED FOR WALL MOUNTING ONLY.
(NOT SUITABLE FOR FLOOR STANDING EQUIPMENT.)
*1200A MAIN FUSIBLE SWITCH MUST BE CENTER MOUNTED WHEN USED WITH BRANCH DEVICES WITH MAIN BUS RATED 800A.

DUAL DIMENSIONS: INCHES
MILLIMETERS

SYSTEM TYPE	MAIN RATING (AMPERES)	CATALOG NUMBER	MOLDED CASE SWITCH (FACTORY INSTALLED)	LINE SIDE PHASE LUG WIRE RANGE FOR AL OR CU CONDUCTORS WITH MOLDED CASE SWITCH	LINE SIDE NEUTRAL LUG WIRE RANGE FOR AL OR CU CONDUCTORS (FACTORY INSTALLED)	GROUND LUG WIRE RANGE (FACTORY INSTALLED)
3Ø 4W 208Y/120VAC OR 240/120VAC DELTA	1200	EZM31200FST	PJM36000S12	(4) 3/0-500 ◆	(4) 3/0-500 ▼	(1) #6-300

EZ METER-PAK GANGABLE
MULTI-METERING EQUIPMENT
1200A 3PH 4W MAIN FUSIBLE SWITCH DEVICES
TOP FEED
RAINPROOF NEMA TYPE 3R ENCLOSURES

SQUARE D
by **Schneider Electric**

DWG# PWFDS-SYTI-0031
NO.