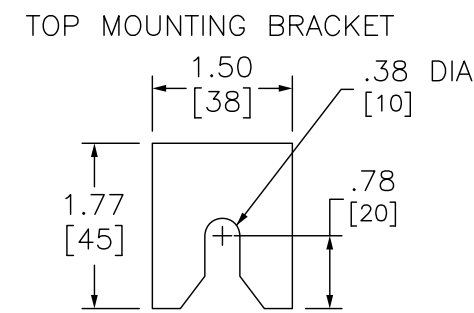
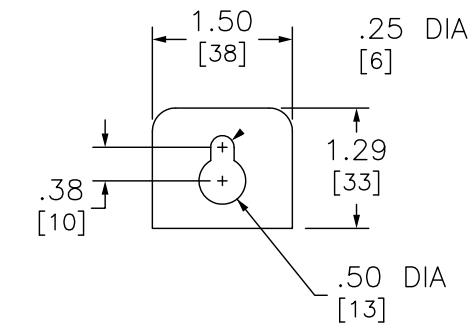
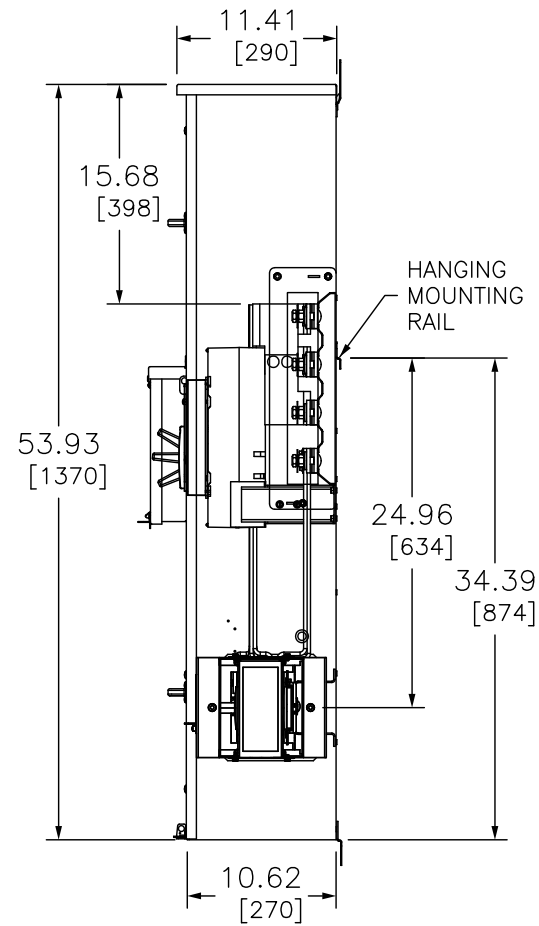
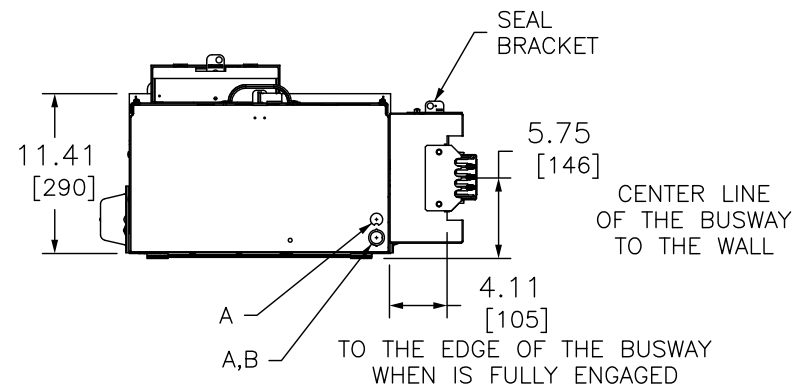
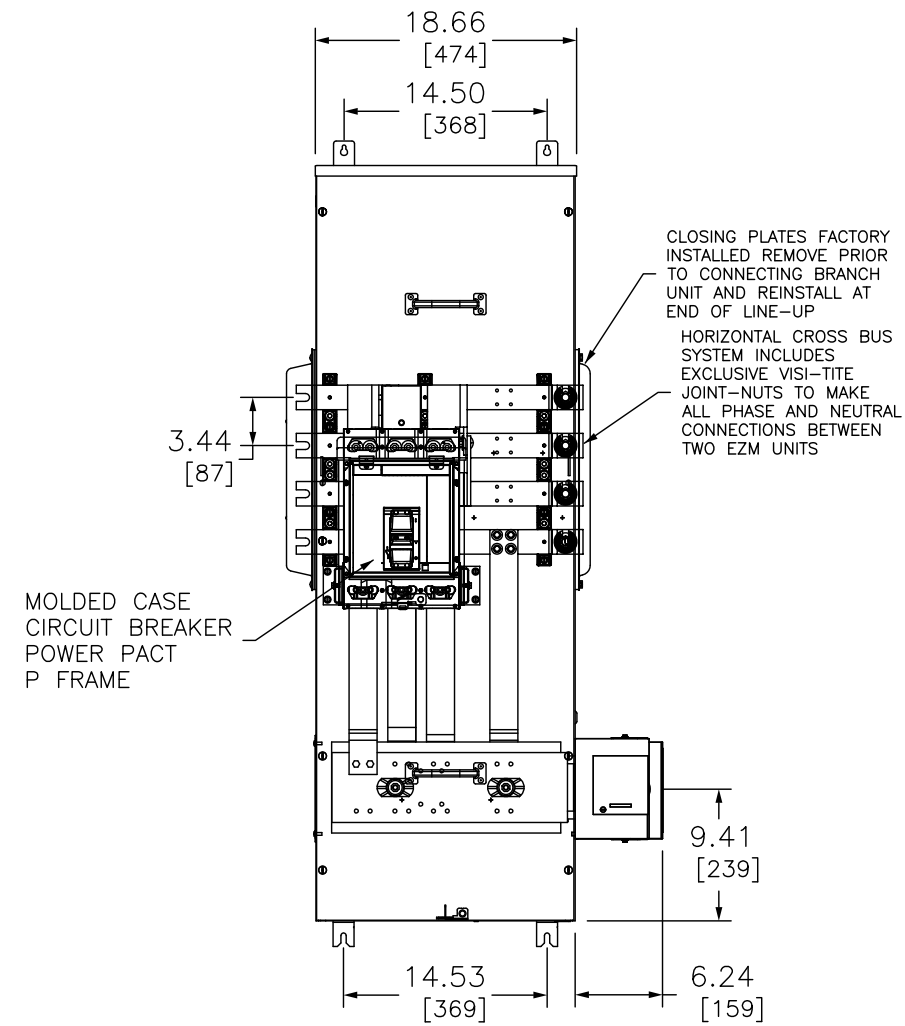


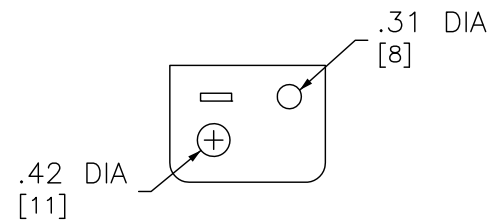
ADDITIONAL NOTES :

- HANDLE EXTENSION AVAILABLE P-FRAME BREAKER  
ORDER KIT REF. 33195

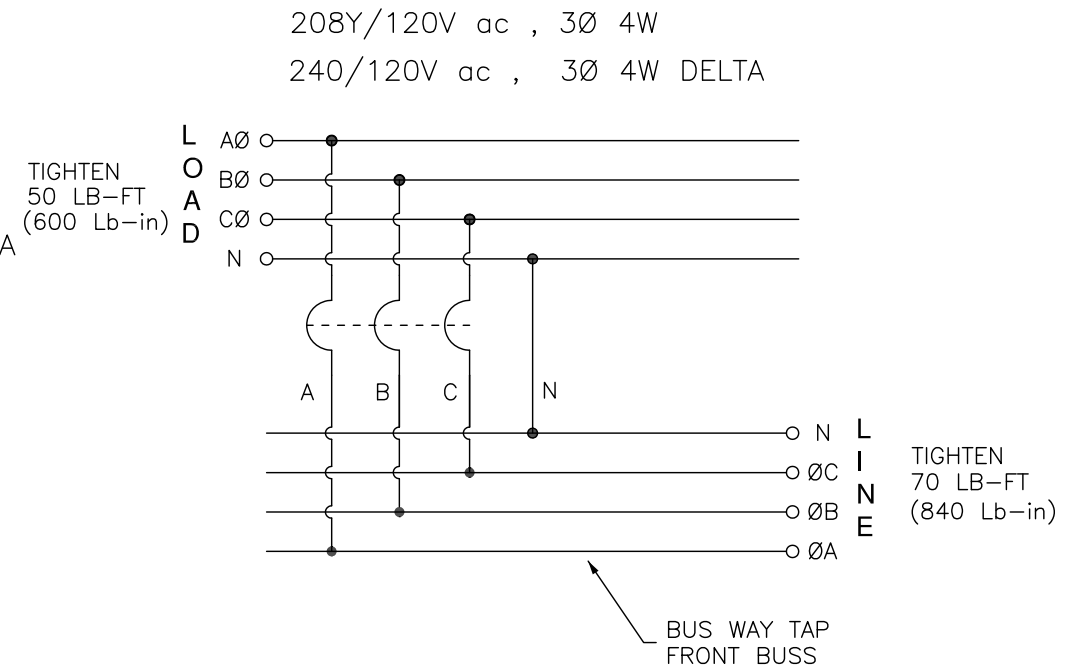
| SYMBOL | KNOCKOUTS    |    |
|--------|--------------|----|
|        | CONDUIT SIZE |    |
|        | IN           | MM |
| A      | .50          | 13 |
| B      | .75          | 19 |



TOP MOUNTING BRACKET  
BOTTOM MOUNTING BRACKET



SEAL BRACKET



DUAL DIMENSIONS: INCHES  
MILLIMETERS

| SYSTEM TYPE                                 | MAIN RATING (AMPERES) | CATALOG NUMBER  | MOLDED CASE BREAKER (FACTORY INSTALLED) INTERRUPTING RATING 65kA @ 240V |
|---|-----------------------|-----------------|---|
| 3Ø 4W<br>208Y/120VAC OR<br>240/120VAC DELTA | 1000                  | EZM31000CBNBBTR | PGF36100U31A  |

NBBTR SUFIX MEANS [ NEUTRAL BACK BUS TAP RIGHT ]

NOTES:

FINISH — GRAY BAKED ENAMEL POWDER COAT PAINT OVER CLEANED GALVANNEALED STEEL.  
UL LISTED — FILE E131840, VOL. M  
MAIN HORIZONTAL CROSS BUS RATED AT 1000 AMPERES.ALUMINUM 1/4 x 2-1/2 TWO LAMINATIONS  
MAIN DEVICES ARE SEALABLE BY UTILITY.  
GANGABLE MULTI-METERING EQUIPMENT IS DESIGNED FOR WALL MOUNTING ONLY.  
(NOT SUITABLE FOR FLOOR STANDING EQUIPMENT.)  
1000AMP MAIN CIRCUIT BREAKER SUITABLE FOR USE ONLY WITH BRANCH DEVICES.  
GROUND CONTINUITY IS MAINTAINED THROUGH THE ENCLOSURE WITH BUSWAY BONDING BRACKETS.

EZ METER-PAK GANGABLE  
MULTI-METERING EQUIPMENT  
1000A 3PH 4W MAIN CIRCUIT BREAKER  
BUSWAY FEED NEUTRAL BACK BUS TAP RIGHT  
INDOOR TYPE 1 ENCLOSURE

**SQUARE D**  
by Schneider Electric

DWG# PWFDS-SYRS-0194  
NO.