

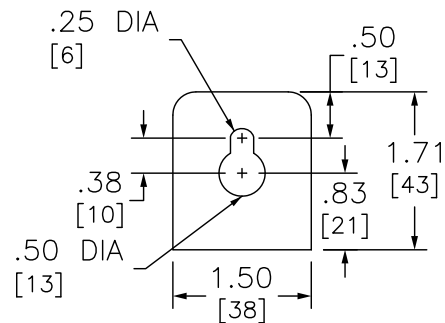
ADDITIONAL NOTES:

WHEN USED AS SERVICE EQUIPMENT, INSTALL BONDING STRAP AND REINSTALL GROUND LUG WHERE APPROPRIATE.

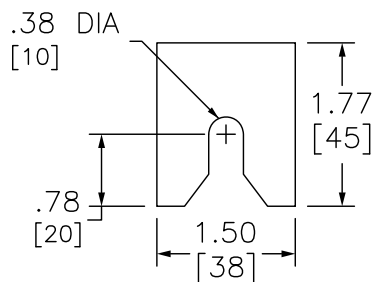
● HANDLE EXTENSION AVAILABLE, ORDER KIT AHXL1, HANDLE IS HINGED, ALLOWING IT TO BE TUCKED UNDER THE DOOR ON THE COVER.

▲ THIS LUG IS AVAILABLE FROM SQUARE D. ORDER CATALOG NUMBER CMELK4, KIT INCLUDES 4 LUGS

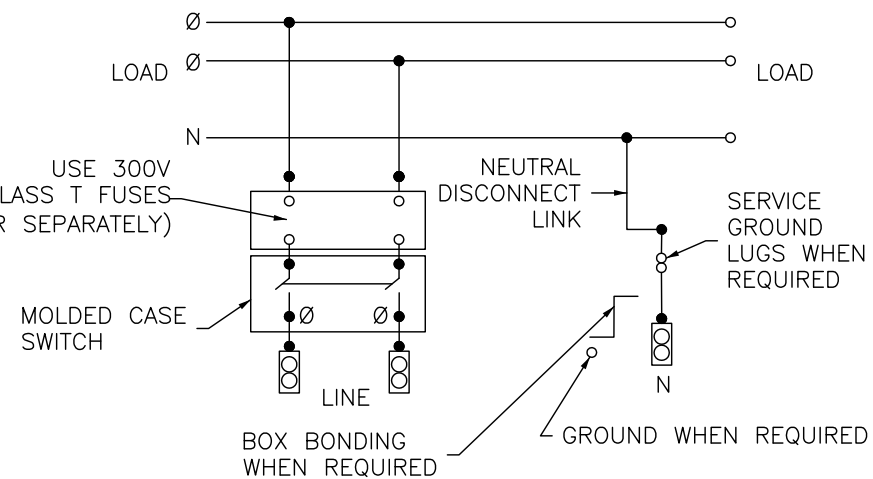
≠ INDICATED VERSA-CRIMP CRIMPING TOOL.



TOP MOUNTING BRACKET



BOTTOM MOUNTING BRACKET



DUAL DIMENSIONS: INCHES
MILLIMETERS

ALTERNATE LUG QUANTITY PER LINE SIDE PHASE AND NEUTRAL TERMINALS (ORDER SEPARATELY)									
CATALOG NUMBER	ANDERSON				ILSCO			CMC	
	VHCL-600-12BN	VHCL-750-12BN	VACL-1000-12BN	LID2-600	2ACL-600	TA-600-2N ▲	AU-600-2N (2 BARREL)	A1B2-600-2	2AB2-600 (2 BARREL)
	250-600 CU	500-750 CU	750-1000 AL	#2-600 AL/CU	250-600 AL/CU	#2-600 AL/CU	#(2) 2-600 AL/CU	#2-600 AL/CU	#(2)2-600 AL/CU
EZM1400FSU	VC-6≠	VC-7≠	VC-8≠	MECH	IDT-12	MECH	MECH	MECH	MECH

NOTES:
FINISH - GRAY BAKED ENAMEL POWDER COAT PAINT OVER CLEANED GALVANNEALED STEEL.
UL LISTED - FILE E-10582, VOL. M, E-131840, VOL. M
SUITABLE FOR USE AS SERVICE EQUIPMENT.
MAIN HORIZONTAL CROSS BUS RATED AT 800 AMPERES.
MAIN DEVICES ARE SEALABLE BY UTILITY.
GANGABLE MULTI-METERING EQUIPMENT IS DESIGNED FOR WALL MOUNTING ONLY.
(NOT SUITABLE FOR FLOOR STANDING EQUIPMENT.)
*MEETS EUSERC STANDARDS FOR WEST COAST BASED UTILITIES.

SYSTEM TYPE	MAIN RATING (AMPERES)	CATALOG NUMBER *	MOLDED CASE SWITCH (FACTORY INSTALLED)	PROVISION TO MOUNT 300V CLASS T FUSES (ORDER SEPARATELY) FUSE RANGE AVAILABLE	LINE PHASE AND NEUTRAL LUG LANDING PADS PROVIDED FOR USE WITH CRIMP-TYPE LUGS(2-HOLE MOUNTING) QUANTITY OF LUGS PER PAD.	GROUND LUG WIRE RANGE (FACTORY INSTALLED)
1Ø 3W 120/240VAC	400	EZM1400FSU	LHF26000M●	225-400A	1(ORDER LUGS SEPARATELY)	(1) #6-300

EZ METER-PAK GANGABLE
MULTI-METERING EQUIPMENT
400A 1PH 3W MAIN FUSIBLE SWITCH DEVICES
UNDERGROUND FEED ONLY
RAINPROOF NEMA TYPE 3R ENCLOSURE

SQUARE D™
by Schneider Electric

DWG# PWFDS-SYRS-0184
NO.