

BALDOR® • RELIANCE 

Product Information Packet

EM7044T-I

5//3HP,1750//1450RPM,3PH,60//50HZ,184T,3

Part Detail							
Revision:	R	Status:	PRD/A	Change #:		Proprietary:	No
Type:	AC	Elec. Spec:	36WGT031	CD Diagram:	CD0005	Mfg Plant:	
Mech. Spec:	36J694	Layout:	36LYJ694	Poles:	04	Created Date:	08-10-2010
Base:	RG	Eff. Date:	05-23-2017	Leads:	9#16		

Specs			
Catalog Number:	EM7044T-I	Front Shaft Indicator:	None
Enclosure:	XPFC	Heater Indicator:	No Heater
Frame:	184T	Insulation Class:	F
Frame Material:	Steel	Inverter Code:	Not Inverter
Output @ Frequency:	5.000 HP @ 60 HZ	KVA Code:	K
	3.000 HP @ 50 HZ	Lifting Lugs:	No Lifting Lugs
Synchronous Speed @ Frequency:	1800 RPM @ 60 HZ	Locked Bearing Indicator:	No Locked Bearing
Voltage @ Frequency:	460.0 V @ 60 HZ	Motor Lead Quantity/Wire Size:	9 @ 16 AWG
	190.0 V @ 50 HZ	Motor Lead Exit:	Ko Box
	230.0 V @ 60 HZ	Motor Lead Termination:	Flying Leads
	380.0 V @ 50 HZ	Motor Type:	3644M
XP Class and Group:	CLI GP C,D	Mounting Arrangement:	F1
XP Division:	Division I	Power Factor:	80
Agency Approvals:	UL	Product Family:	General Purpose
	CSA	Pulley End Bearing Type:	Sealed Bearing
Auxillary Box:	No Auxillary Box	Pulley Face Code:	Standard
Auxillary Box Lead Termination:	None	Pulley Shaft Indicator:	Standard
Base Indicator:	Rigid	Rodent Screen:	None

Bearing Grease Type:	Polyrex EM (-20F +300F)	RoHS Status:	ROHS COMPLIANT
Blower:	None	Shaft Extension Location:	Pulley End
Current @ Voltage:	10.400 A @ 190.0 V	Shaft Ground Indicator:	No Shaft Grounding
	13.000 A @ 230.0 V	Shaft Rotation:	Reversible
	13.600 A @ 208.0 V	Shaft Slinger Indicator:	No Slinger
	5.200 A @ 380.0 V	Speed Code:	Single Speed
	6.500 A @ 460.0 V	Motor Standards:	NEMA
Design Code:	B	Starting Method:	Direct on line
Drip Cover:	No Drip Cover	Thermal Device - Bearing:	NONE (OLD)
Duty Rating:	CONT	Thermal Device - Winding:	Normally Closed Thermostat
Electrically Isolated Bearing:	Not Electrically Isolated	Vibration Sensor Indicator:	No Vibration Sensor
Feedback Device:	NO FEEDBACK	Winding Thermal 1:	None
Front Face Code:	Standard	Winding Thermal 2:	None
		XP Temp Code:	T3C

Nameplate NP0977XPSLEV											
NO.						CC	010A				
SER.							TEMP CODE	T3C			
SPEC.	36J694T031G2										
CAT.NO.	EM7044T-I										
HP	5//3										
VOLTS	230/460//190/380										
AMPS	13/6.5//10.4/5.2										
RPM	1750//1450					MOTOR WEIGHT	122				
HERTZ	60//50		PH	3		CL	F	DE BRG	6206		
SER.F.	1.15		DES	B		CODE	K	ODE BRG	6205		
FRAME	184T		GREASE		POLYREX EM						
RATING	40C AMB-CONT 55C AMB AT 1.0 SF										
USABLE AT 208V	13.6				NEMA-NOM-EFF			89.5		PF	80
	NEMA MG-1 PT 5,IP55										

Parts List		
Part Number	Description	Quantity
SA201389	SA 36J694T031G2	1.000 EA
RA188687	RA 36J694T031G2	1.000 EA
35CB1005A01	CONDUIT BOX,MACH - GROUP "C" MTRS	1.000 EA
06EP1709A05	FRONT XPFC 205 BRG GRP C W/ DRAIN (HW450	1.000 EA
HW4500A19	1/4-28X1/4 SLOTTED PLUG F/S	2.000 EA
HW4506A02	BREATHER/DRAIN-EXP PROOF-.125-27 NPTF AI	1.000 EA
HW3022E05	.125 DIA X .500 ROLLED SPRING PIN	1.000 EA
HW5100A05	WVY WSHR F/205 & 304 BRGS	1.000 EA
36EP1718A03	36 PU EP XPFC 206 BRG W/METAL SLINGER	1.000 EA
HW4500A19	1/4-28X1/4 SLOTTED PLUG F/S	2.000 EA
HW4506A02	BREATHER/DRAIN-EXP PROOF-.125-27 NPTF AI	1.000 EA
HW3022E05	.125 DIA X .500 ROLLED SPRING PIN	1.000 EA
XY3816A12	3/8-16 FINISHED NUT	4.000 EA
36FH3003A05	FAN COVER XP W/(2) GRSR HOLES, DRAIN	1.000 EA
51XN1032A08	10-32 X 0.500 HX WS SL SR ZN	4.000 EA
35CB1501A01	CONDUIT BOX LID, MACH. - GROUP "C" MTRS	1.000 EA
RM1020A41	O-RING, -150 BUNA-N, .103 CS X 2.862 ID	1.000 EA
HA2065A01	SLINGER, ALUM (AUTO)	1.000 EA
80XN1032A07	SET SCREW, HEX XOCK, ZN	1.000 EA
HW2501E16	KEY, 1/4 SQ X 1.750	1.000 EA
HA7000A02	KEY RETAINER RING, 1 1/8 DIA, 1 3/8 DIA	1.000 EA
85XU0407S04	4X1/4 U DRIVE PIN STAINLESS	6.000 EA
LB1359F	ALUM XP CAUTION LABEL	1.000 EA
MJ1000A02	GREASE, POLYREX EM EXXON (USe 4824-15A)	0.050 LB

Parts List (continued)		
Part Number	Description	Quantity
36FN3000A01SP	EXFN, PLASTIC, 7.00 OD, .912 ID	1.000 EA
51XB1214A16	12-14X1.00 HXWSSLD SERTYB	1.000 EA
MG1025G29	WILKOFASST, 789.229, DARK CHARCOAL GRAY	0.022 GA
HA3105A18	THRUBOLT- 3/8-16 X 13.375 X	4.000 EA
LB1119N	WARNING LABEL	1.000 EA
LC0145B01	CONNECTION LABEL	1.000 EA
NP0977XPSLEV	SS XP UL CSA-EEV CC CL-I GP-C&D	1.000 EA
G0PA1000	PKG GRP, PRINT PK1026A06	1.000 EA
MN416A01	TAG-INSTAL-MAINT no wire (1200/bx) 5/18	1.000 EA

AC Induction Motor Performance Data

Record # 32376 - Typical performance - not guaranteed values

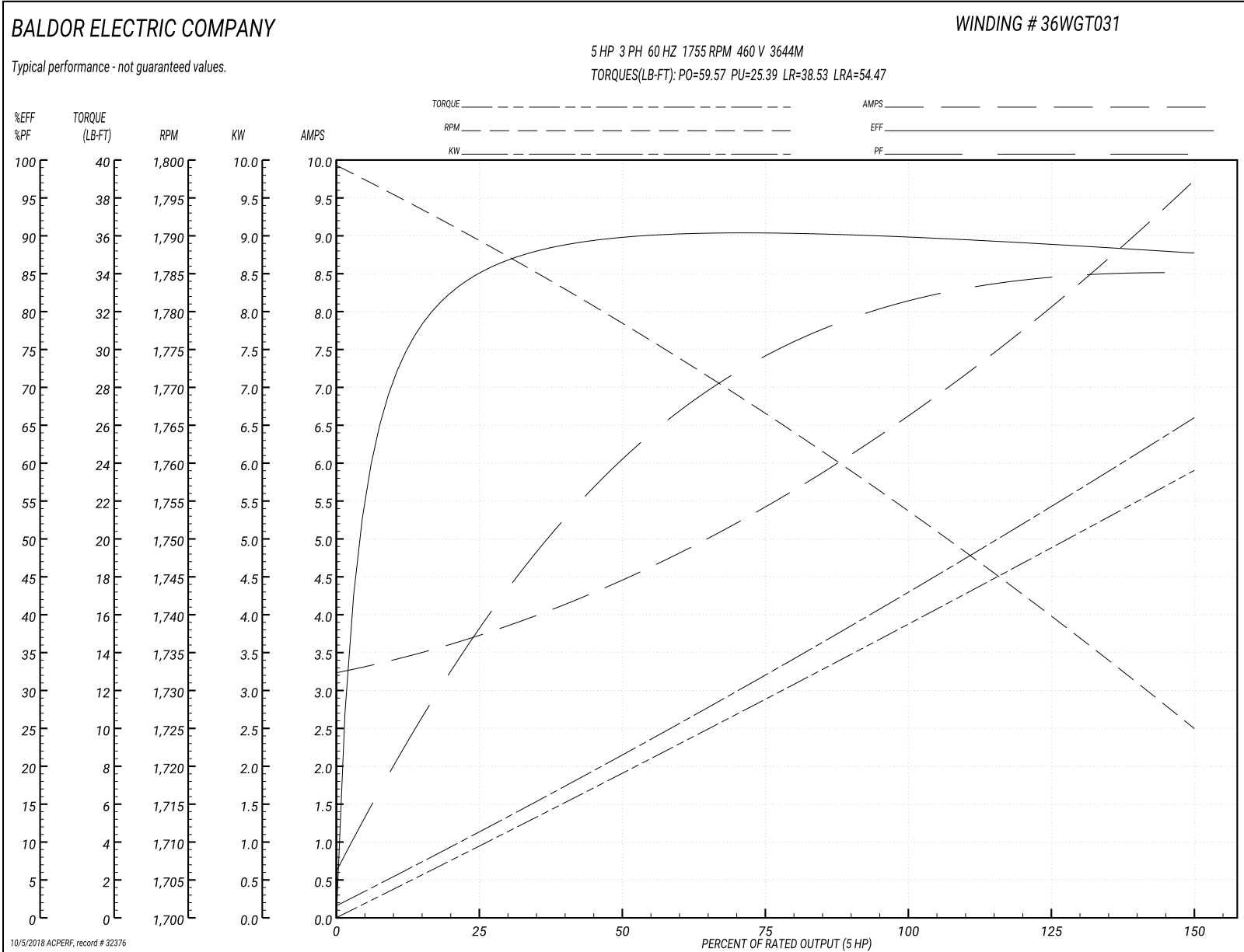
Winding: 36WGT031-R071	Type: 3644M	Enclosure: XPFC
-------------------------------	--------------------	------------------------

Nameplate Data				460 V, 60 Hz: High Voltage Connection	
Rated Output (HP)	5//3			Full Load Torque	15.1 LB-FT
Volts	230/460//190/380			Start Configuration	direct on line
Full Load Amps	13/6.5//10.4/5.2			Breakdown Torque	59.57 LB-FT
R.P.M.	1750//1450			Pull-up Torque	25.39 LB-FT
Hz	60//50	Phase	3	Locked-rotor Torque	38.53 LB-FT
NEMA Design Code	B	KVA Code	K	Starting Current	54.47 A
Service Factor (S.F.)	1.15			No-load Current	3.32 A
NEMA Nom. Eff.	89.5	Power Factor	80	Line-line Res. @ 25°C	2.26 Ω
Rating - Duty	40C AMB-CONT			Temp. Rise @ Rated Load	54°C
S.F. Amps				Temp. Rise @ S.F. Load	65°C
				Locked-rotor Power Factor	51.7
				Rotor inertia	0.409 LB-FT ²

Load Characteristics 460 V, 60 Hz, 5 HP

% of Rated Load	25	50	75	100	125	150	S.F.
Power Factor	39	61	73	80	84	86	82
Efficiency	84.8	89.6	90.3	90.2	88.9	87.7	90
Speed	1790	1779	1767	1755	1742	1725	1746
Line amperes	3.62	4.36	5.37	6.55	7.9	9.67	7.3

Performance Graph at 460V, 60Hz, 5.0HP Typical performance - Not guaranteed values



AC Induction Motor Performance Data

Record # 38923 - Typical performance - not guaranteed values

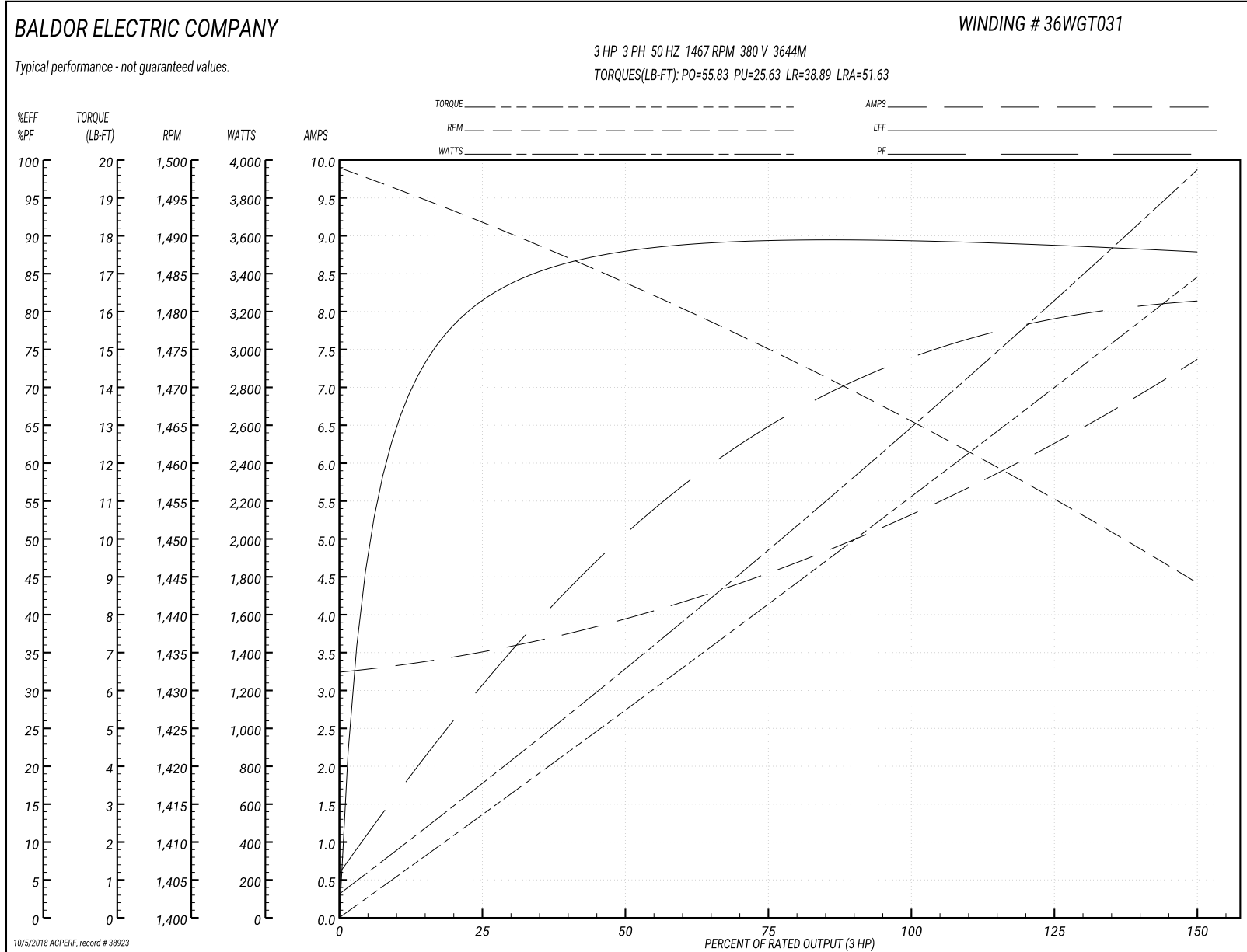
Winding: 36WGT031-R071	Type: 3644M	Enclosure: XPFC
-------------------------------	--------------------	------------------------

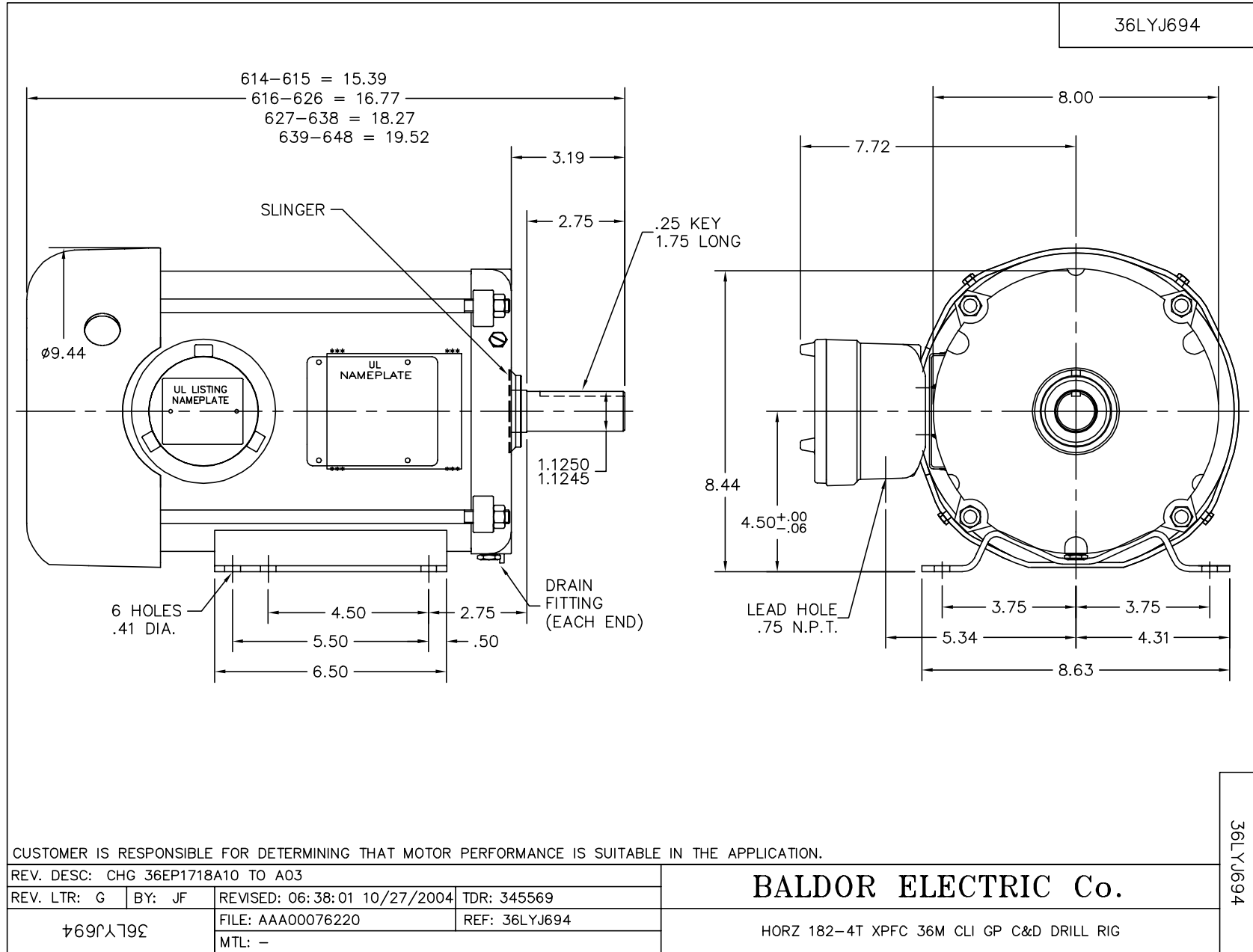
Nameplate Data				380 V, 50 Hz: High Voltage Connection	
Rated Output (HP)	5//3			Full Load Torque	10.84 LB-FT
Volts	230/460//190/380			Start Configuration	direct on line
Full Load Amps	13/6.5//10.4/5.2			Breakdown Torque	55.83 LB-FT
R.P.M.	1750//1450			Pull-up Torque	25.63 LB-FT
Hz	60//50	Phase	3	Locked-rotor Torque	38.89 LB-FT
NEMA Design Code	B	KVA Code	K	Starting Current	51.63 A
Service Factor (S.F.)	1.15			No-load Current	3.28 A
NEMA Nom. Eff.	89.5	Power Factor	80	Line-line Res. @ 25°C	2.26 Ω
Rating - Duty	40C AMB-CONT			Temp. Rise @ Rated Load	38°C
S.F. Amps				Temp. Rise @ S.F. Load	44°C
				Locked-rotor Power Factor	57.1
				Rotor inertia	0.409 LB-FT ²

Load Characteristics 380 V, 50 Hz, 3 HP

% of Rated Load	25	50	75	100	125	150	S.F.
Power Factor	31	51	64	73	78	82	76
Efficiency	81	87.8	89.3	89.7	88.7	87.9	89.2
Speed	1492	1484	1475	1467	1457	1444	1467
Line amperes	3.46	3.9	4.52	5.26	6.15	7.34	5.8

Performance Graph at 380V, 50Hz, 3.0HP Typical performance - Not guaranteed values

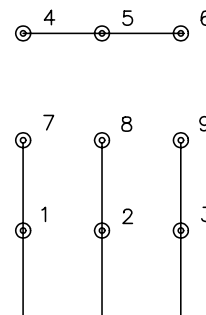




CD0005



LOW VOLTAGE
(2Y)



LINE

HIGH VOLTAGE
(1Y)



LINE

NOTES:

1. INTERCHANGE ANY TWO LINE LEADS TO REVERSE ROTATION.
2. OPTIONAL THERMOSTATS ARE PROVIDED WHEN SPECIFIED.
3. ACTUAL NUMBER OF INTERNAL PARALLEL CIRCUITS MAY BE A MULTIPLE OF THOSE SHOWN ABOVE.
4. LEAD COLORS ARE OPTIONAL. LEADS MUST ALWAYS BE NUMBERED AS SHOWN.

REV. DESC: REVISE TO SHOW OPTIONAL COLORS

REV. LTR: E BY: JLP

REVISED: 01/19/99 10:15

TDR: 0171435

900003

FILE: AAA00005140

MDL: -

MTL: -

BALDOR ELECTRIC Co.

3PH, DV, 9 LEADS

CD0005