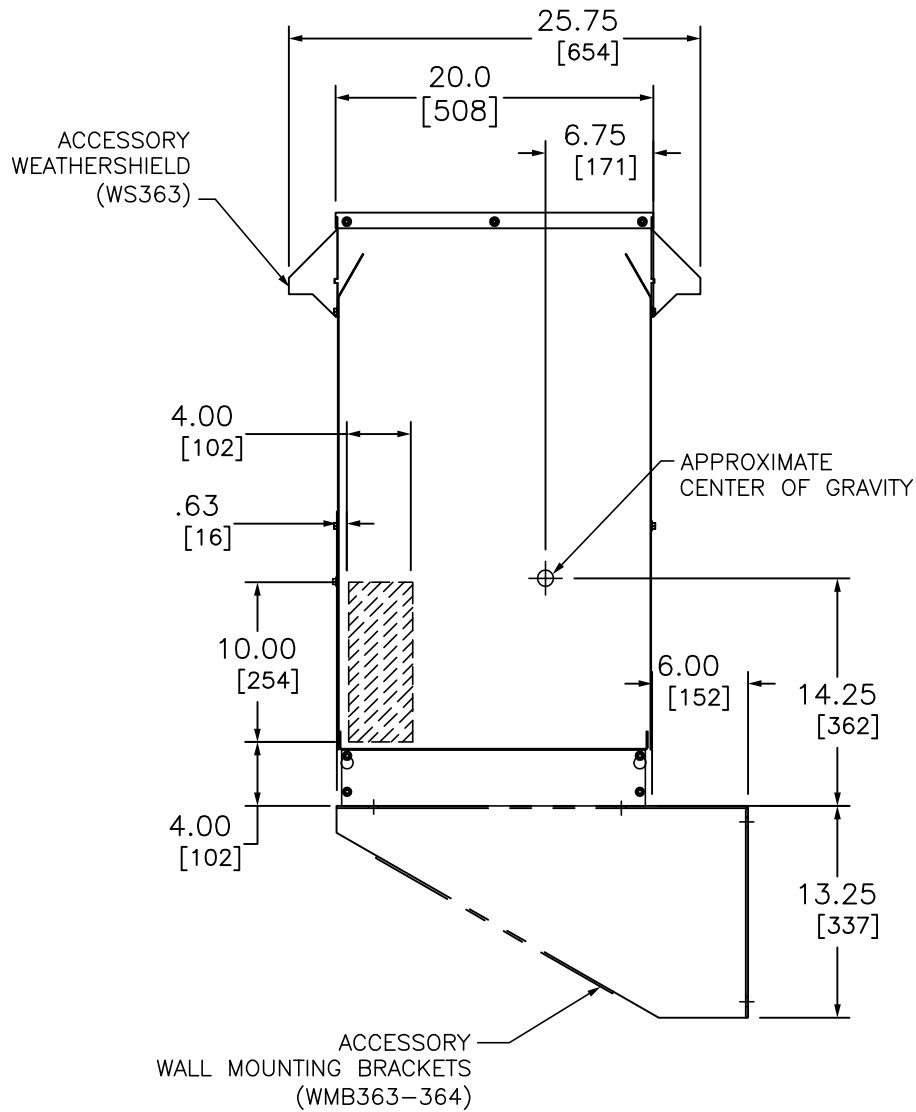
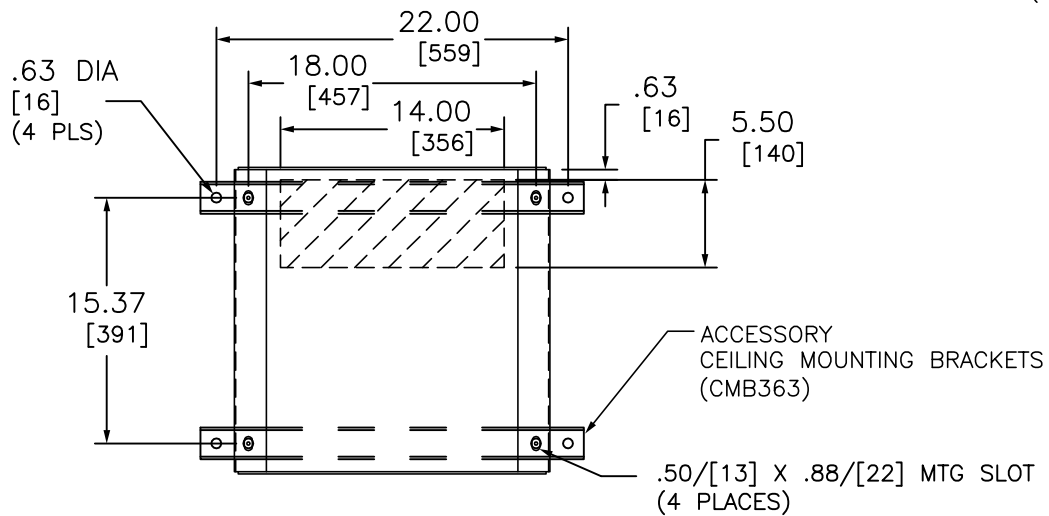
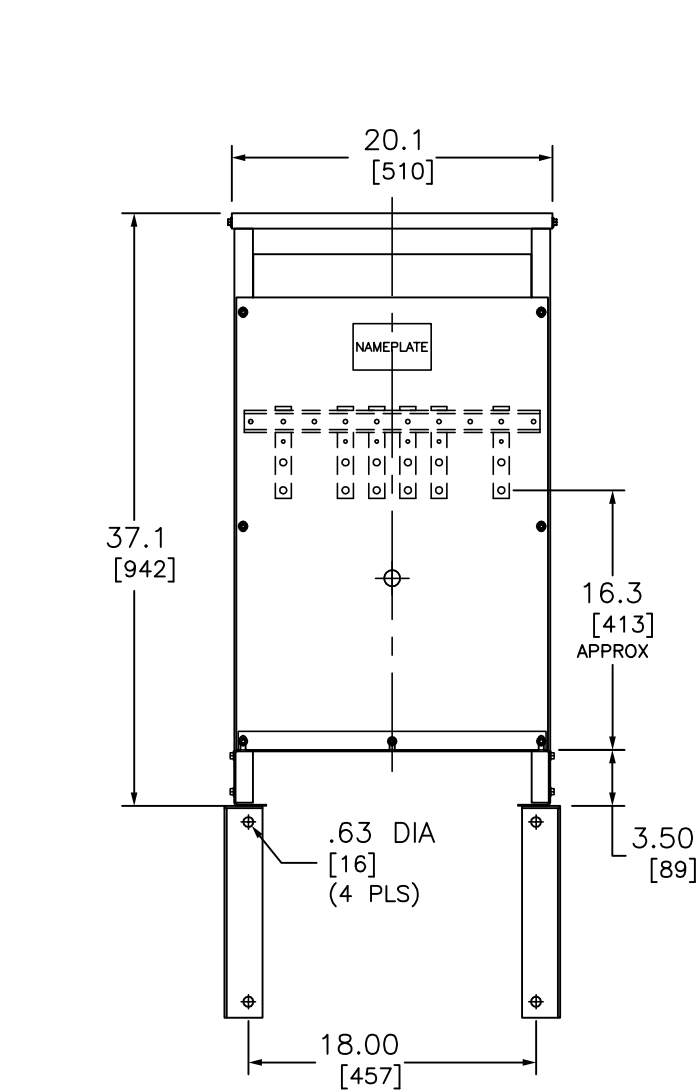
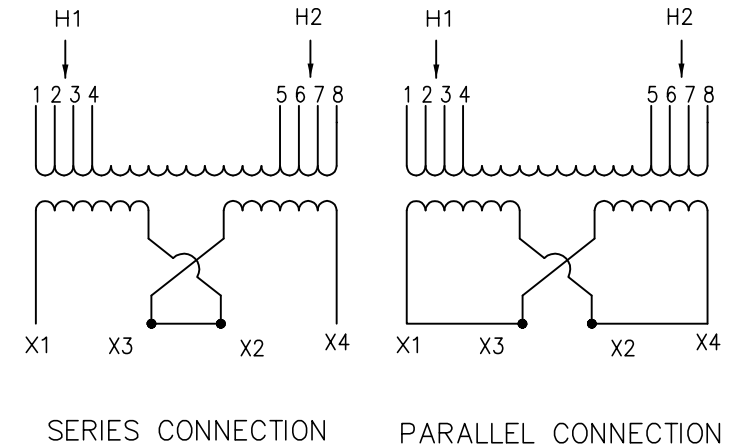


j:\lvgpdwg\Customer Drawings\Online Approval Drawings\EE37S3534H.DWG 11/14/2007 8:20:25 AM



CONNECT LINES TO H1 & H2	
PRIMARY VOLTS	CONNECT TO TAPS
630	1 AND 8
615	1 AND 7
600	2 AND 7
585	2 AND 6
570	3 AND 6
555	3 AND 5
540	4 AND 5



**TRANSFORMER SPECIFICATIONS:**  
37.5kVA 1Ø 60 HZ  
PRIMARY VOLTAGE 600  
SECONDARY VOLTAGE 120/240  
150 °C RISE ABOVE 40 °C AMBIENT  
220 °C INSULATION SYSTEM  
ALUMINUM WINDINGS  
APPROXIMATE WEIGHT: 400 LBS  
GUARANTEED SOUND LEVEL: 45 dB  
EFFICIENCY @35%: 98.2% AVG. CONFORMS  
TO NEMA TP 1 - 2002 AND CSA C802.2

NOTES:

- 1) cULus LISTED (MEETING UL 1561 AND CSA C22.2)
- 2) NEMA 2 VENTILATED ENCLOSURE  
ENCLOSURE RATED FOR NEMA 3R WHEN OPTIONAL  
WEATHERSHIELD ACCESSORY IS INSTALLED.
- 3) MINIMUM CLEARANCE OF 3.00[76] BETWEEN VENT  
OPENINGS, WALL OR OTHER OBSTRUCTION
- 4) SHADED AREAS DENOTE CUSTOMER CONDUIT  
ENTRANCE LOCATIONS, AVAILABLE BOTH SIDES  
AND BOTTOM

SEISMIC QUALIFICATION:

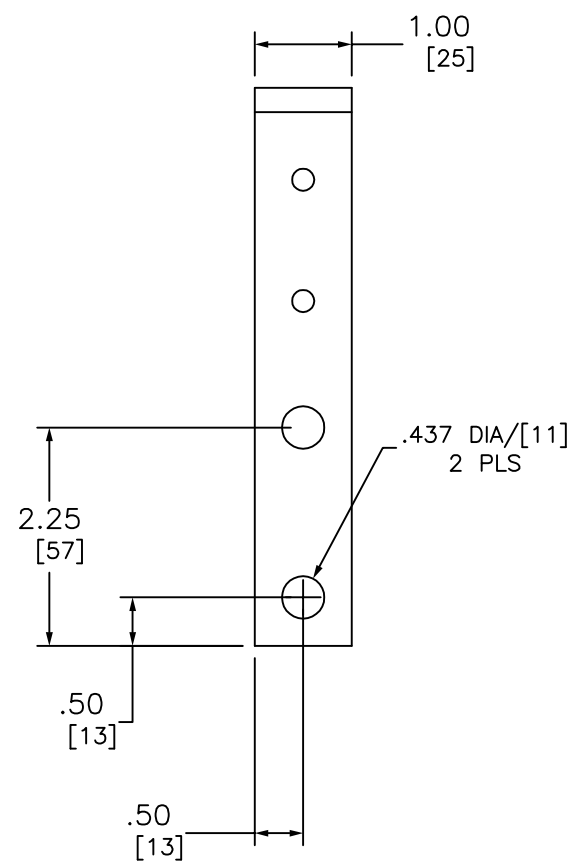
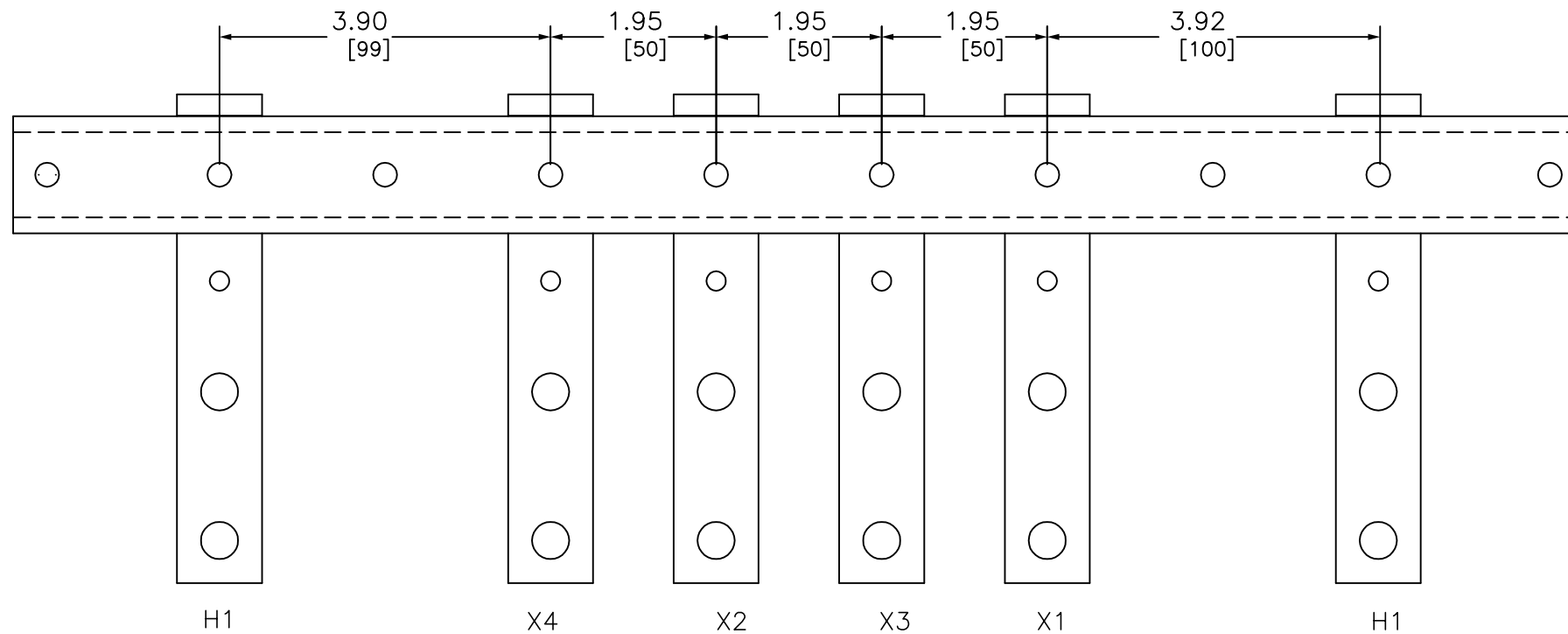
TO BE COMPLIANT WITH THE SEISMIC REQUIREMENTS OF ASCE/SEI 7, THIS UNIT  
HAS BEEN QUALIFIED BY SHAKE TABLE TESTING THROUGH SELF CERTIFICATION TO  
ICC ES AC156. CONTACT YOUR LOCAL SCHNEIDER ELECTRIC/SQUARE D  
REPRESENTATIVE FOR RELATED QUESTIONS.

DUAL DIMENSIONS: INCHES  
MILLIMETERS

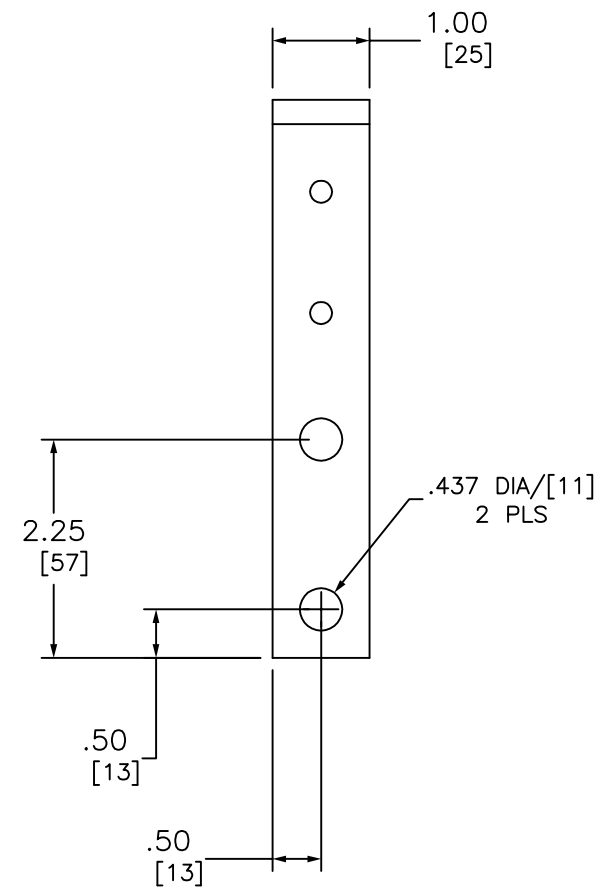
LOW VOLTAGE ENERGY EFFICIENT, TP1  
DRY-TYPE TRANSFORMER  
CATALOG NO EE37S3534H  
1 PHASE, 37.5kVA, AL  
PRIMARY 600 , SECONDARY 120/240



DWG# 6312-0218  
NO.



X TERMINAL DETAIL



H TERMINAL DETAIL

DUAL DIMENSIONS: INCHES  
MILLIMETERS

LOW VOLTAGE ENERGY EFFICIENT, TP1  
 DRY-TYPE TRANSFORMER  
 CATALOG NO EE37S3534H  
 1 PHASE, 37.5kVA, AL  
 PRIMARY 600 ,SECONDARY 120/240



DWG# 6312-0218  
 NO.