

Chains & sprockets	Wear strips	Side guide brackets & accessories	Levelers
Modular belts & sprockets	Chain & belt return systems	Frame & structure supports	Bearing supports
Curves & tracks	Side guide solutions	Miscellaneous products	Related information

51600a

Clamps for conical side guides

www.SystemPlastSmartGuide.com

Single clamp with pin



Click here for related information.

continue ▶



page code

51520a



For brackets, go to:

53510a



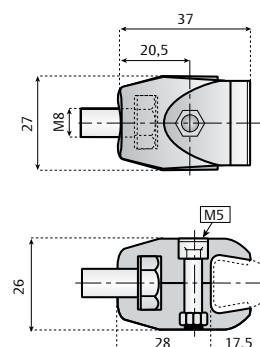
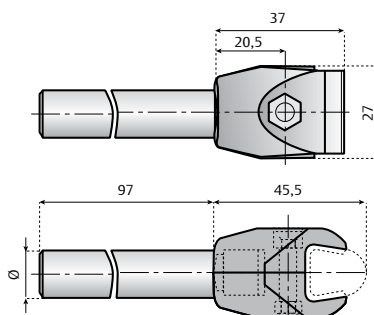
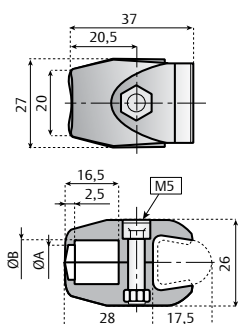
Without rod



With rod



With screw



Min. order quantity: 300 pcs.

A	B	Clamp Type	Without rod	Ø 12	Ø 14	Ø 16	
10	12	1	CL-CON-P12M	CL-CON-P12100M	-	-	50
12	13,5	2	CL-CON-P14M	-	CL-CON-P14100M	CL-CON-P16100M	

Material: clamp in reinforced polyamide (PA-FG Black), bolt in stainless steel, nut in nickel plated brass.
Supply: assembled.

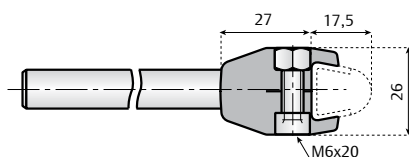
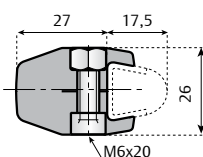
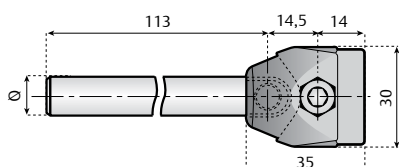
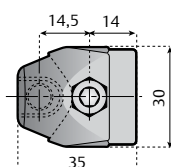
With screw	
Item description	
CL-CON-P-M8	50

Material: clamp in reinforced polyamide (PA-FG Black), bolts in stainless steel, nut in nickel plated brass.
Supply: assembled.

Clamps for conical side guides

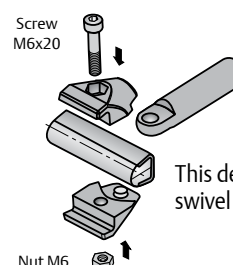
Single clamp with swivel pin

Material: clamp in reinforced polyamide (PA-FG Black).
Nut, screws, washer and rod in stainless steel.
Supply: assembled.

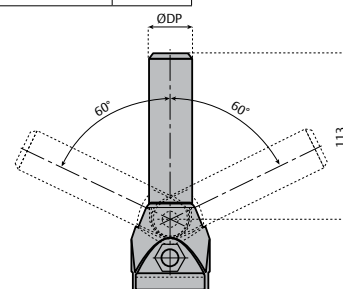


Without rod	Ø 12	
Item description		
CL-CON-PS	CL-CON-PS12100M	50

Application example



This design allows a max. swivel angle of 120°



Click here for related information.

continue ▶



page code

51520a

For profiles, go to:



For brackets, go to:

53510a