

BALDOR® • RELIANCE 

Product Information Packet

CEWDM3613T

5HP,3450RPM,3PH,60HZ,184TC,3630M,TEFC,F1

| Part Detail | | | | | | | |
|-------------|--------|-------------|------------|-------------|--------|---------------|------------|
| Revision: | P | Status: | PRD/A | Change #: | | Proprietary: | No |
| Type: | AC | Elec. Spec: | 36WGS042 | CD Diagram: | CD0005 | Mfg Plant: | |
| Mech. Spec: | 36K190 | Layout: | 36LYK190 | Poles: | 02 | Created Date: | 05-10-2010 |
| Base: | RG | Eff. Date: | 10-23-2017 | Leads: | 9#16 | | |

| Specs | | | |
|---------------------------------|-------------------------|--------------------------------|-----------------|
| Catalog Number: | CEWDM3613T | Heater Indicator: | No Heater |
| Enclosure: | TEFC | Insulation Class: | F |
| Frame: | 184TC | Inverter Code: | Inverter Ready |
| Frame Material: | Steel | KVA Code: | L |
| Output @ Frequency: | 5.000 HP @ 60 HZ | Lifting Lugs: | No Lifting Lugs |
| Synchronous Speed @ Frequency: | 3600 RPM @ 60 HZ | Locked Bearing Indicator: | Locked Bearing |
| Voltage @ Frequency: | 460.0 V @ 60 HZ | Motor Lead Quantity/Wire Size: | 9 @ 16 AWG |
| | 230.0 V @ 60 HZ | Motor Lead Exit: | Ko Box |
| XP Class and Group: | None | Motor Lead Termination: | Flying Leads |
| XP Division: | Not Applicable | Motor Type: | 3630M |
| Agency Approvals: | UR | Mounting Arrangement: | F1 |
| | CSA EEV | Power Factor: | 91 |
| | CSA | Product Family: | Wash Down |
| Auxillary Box: | No Auxillary Box | Pulley End Bearing Type: | Ball |
| Auxillary Box Lead Termination: | None | Pulley Face Code: | C-Face |
| Base Indicator: | Rigid | Pulley Shaft Indicator: | Standard |
| Bearing Grease Type: | Polyrex EM (-20F +300F) | Rodent Screen: | None |
| Blower: | None | Shaft Extension Location: | Pulley End |

| | | | |
|---------------------------------------|---------------------------|------------------------------------|---------------------|
| Current @ Voltage: | 11.800 A @ 230.0 V | Shaft Ground Indicator: | No Shaft Grounding |
| | 12.000 A @ 208.0 V | Shaft Rotation: | Reversible |
| | 5.900 A @ 460.0 V | Shaft Slinger Indicator: | No Slinger |
| Design Code: | A | Speed Code: | Single Speed |
| Drip Cover: | No Drip Cover | Motor Standards: | NEMA |
| Duty Rating: | CONT | Starting Method: | Direct on line |
| Electrically Isolated Bearing: | Not Electrically Isolated | Thermal Device - Bearing: | None |
| Feedback Device: | NO FEEDBACK | Thermal Device - Winding: | None |
| Front Face Code: | Standard | Vibration Sensor Indicator: | No Vibration Sensor |
| Front Shaft Indicator: | None | Winding Thermal 1: | None |
| | | Winding Thermal 2: | None |

| Nameplate NP1669L | | | | | | | | | | |
|-------------------|--------------|--|------|----|----------------|------|--|-------|----|---|
| CAT.NO. | CEWDM3613T | | | | | | | | | |
| SPEC. | 36K190S042G1 | | | | | | | | | |
| HP | 5 | | | | | | | | | |
| VOLTS | 230/460 | | | | | | | | | |
| AMP | 11.8/5.9 | | | | | | | | | |
| RPM | 3450 | | | | | | | | | |
| FRAME | 184TC | | | | HZ | 60 | | | PH | 3 |
| SER.F. | 1.15 | | CODE | L | DES | A | | CLASS | F | |
| NEMA-NOM-EFF | 88.5 | | PF | 91 | | | | | | |
| RATING | 40C AMB-CONT | | | | | | | | | |
| CC | 010A | | | | USABLE AT 208V | | | 12 | | |
| DE | 6206 | | | | ODE | 6205 | | | | |
| ENCL | TEFC | | SN | | | | | | | |
| BLANK | | | | | | | | | | |

| Parts List | | |
|---------------|--|----------|
| Part Number | Description | Quantity |
| SA194648 | SA 36K190S042G1 | 1.000 EA |
| RA182234 | RA 36K190S042G1 | 1.000 EA |
| 34FN3002B02 | EXTERNAL FAN, PLASTIC, .905/.907 HUB W/ | 1.000 EA |
| 36CB3005A03W | 36 CB .75 NPT @ 6 W/WHITE EPOXY | 1.000 EA |
| 35GS1040 | 35 MOLDED GASKET W/LIP, LEAD SEAL, | 1.000 EA |
| 51XB1016A08 | 10-16X 1/2HXWSSLD SERTYB | 2.000 EA |
| HA5027A01 | HA4066A01 T-DRAIN X2 BAGGED | 1.000 EA |
| 11XW1032G06 | 10-32 X .38, TAPTITE II, HEX WSHR SLTD U | 1.000 EA |
| 36EP3104A03MW | FREP MACH (RAISED FH PADS) WHITE EPOXY | 1.000 EA |
| HW4032A01 | BLACK DRAIN PLUG FOR WASH DOWN MOTORS | 3.000 EA |
| HW5100A05 | WVY WSHR F/205 & 304 BRGS | 1.000 EA |
| 36PE3301A27MW | PUEP ASSEMBLY FOR ROUTING PURPOSES | 1.000 EA |
| HW4032A01 | BLACK DRAIN PLUG FOR WASH DOWN MOTORS | 3.000 EA |
| HW4600B50SP | SEAL 1.156 X 1.874 X 0.250 SINGLE LIP DB | 1.000 EA |
| 10XN2520S26 | 1/4-20X 1 5/8 HEX HD SS | 4.000 EA |
| 36FH4010A08 | IEC FH NO GREASER - W/PRIMER | 1.000 EA |
| 11XW1032S06 | 10-32 X .38, TAPTITE II, HEX WSHR SLTD U | 3.000 EA |
| 36CB4518 | 36 LIPPED CB LID PRIMED | 1.000 EA |
| 37GS3010SP | 1/16"WHITE LID GASKET | 1.000 EA |
| 59XW0832S07 | TAPTITE II,HEX WSHR UNSLTD SER,410 S.S., | 4.000 EA |
| HW4600B32SP | V-RING SLINGER 1.000 X 1.540 X .24 VITON | 1.000 EA |
| HW4600B36SP | V-RING SLINGER 1.188 X 1.690 X .24 VITON | 1.000 EA |
| HW2502E16 | #303 SS,SQ KEY 1/4 X 1.750 | 1.000 EA |
| HA7000A02 | KEY RETAINER RING, 1 1/8 DIA, 1 3/8 DIA | 1.000 EA |

| Parts List (continued) | | |
|-------------------------------|---|-----------------|
| Part Number | Description | Quantity |
| MJ5001A27 | 32220KN GRAY SEALER *MIN BUY 4 QTS=1GAL | 0.001 QT |
| 85XU0407S04 | 4X1/4 U DRIVE PIN STAINLESS | 2.000 EA |
| LB1164 | LABEL,WARNING AND DRAIN | 1.000 EA |
| MJ1000A02 | GREASE, POLYREX EM EXXON (USe 4824-15A) | 0.050 LB |
| 51XB1214A16 | 12-14X1.00 HXWSSLD SERTYB | 1.000 EA |
| MG1025Z02 | ACTIVATOR WILKOFAS 060.02HF | 0.010 GA |
| MG1025W01 | WILKOFAS 781.01, SIGNAL WHITE #9003 | 0.022 GA |
| HA3101S25 | THRUBOLT- 1/4-20 X 11.00 X | 4.000 EA |
| LC0005 | CONN.DIA.,TY M,9-LD,DUAL VOLT,REVERSING | 1.000 EA |
| NP1669L | SS WD SUPER-E UL CSA-EEV PREM REV MTG | 1.000 EA |
| 36PA1001 | PKG GRP, PRINT PK1017A06 | 1.000 EA |
| MN416A01 | TAG-INSTAL-MAINT no wire (1200/bx) 5/18 | 1.000 EA |

AC Induction Motor Performance Data

Record # 35706 - Typical performance - not guaranteed values

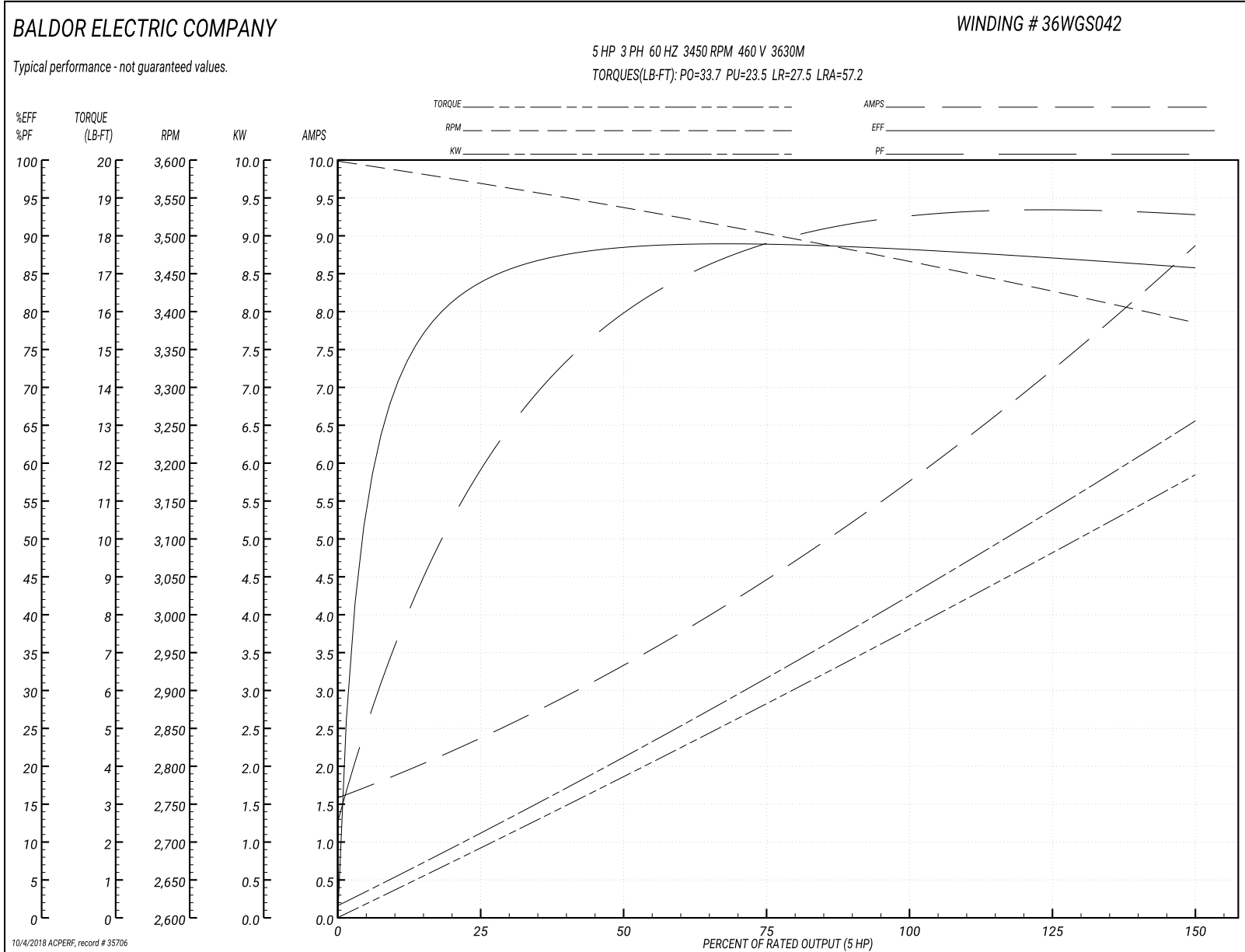
| | | |
|-------------------------------|--------------------|------------------------|
| Winding: 36WGS042-R003 | Type: 3630M | Enclosure: TEFC |
|-------------------------------|--------------------|------------------------|

| Nameplate Data | | | | 460 V, 60 Hz: High Voltage Connection | |
|-----------------------|--------------|--------------|----|--|--------------------------|
| Rated Output (HP) | 5 | | | Full Load Torque | 7.64 LB-FT |
| Volts | 208-230/460 | | | Start Configuration | direct on line |
| Full Load Amps | 12-11.8/5.9 | | | Breakdown Torque | 33.7 LB-FT |
| R.P.M. | 3450 | | | Pull-up Torque | 23.5 LB-FT |
| Hz | 60 | Phase | 3 | Locked-rotor Torque | 27.5 LB-FT |
| NEMA Design Code | A | KVA Code | L | Starting Current | 57.2 A |
| Service Factor (S.F.) | 1.15 | | | No-load Current | 1.68 A |
| NEMA Nom. Eff. | 88.5 | Power Factor | 91 | Line-line Res. @ 25°C | 2.27 Ω |
| Rating - Duty | 40C AMB-CONT | | | Temp. Rise @ Rated Load | 72°C |
| S.F. Amps | | | | Temp. Rise @ S.F. Load | 88°C |
| | | | | Locked-rotor Power Factor | 45 |
| | | | | Rotor inertia | 0.134 LB-FT ² |

Load Characteristics 460 V, 60 Hz, 5 HP

| % of Rated Load | 25 | 50 | 75 | 100 | 125 | 150 | S.F. |
|-----------------|------|------|------|------|------|------|------|
| Power Factor | 62 | 81 | 88 | 91 | 93 | 94 | 92 |
| Efficiency | 83.2 | 88.4 | 89.1 | 88.3 | 87 | 85.8 | 87.5 |
| Speed | 3569 | 3537 | 3504 | 3466 | 3428 | 3385 | 3443 |
| Line amperes | 2.24 | 3.26 | 4.47 | 5.85 | 7.26 | 8.8 | 6.7 |

Performance Graph at 460V, 60Hz, 5.0HP Typical performance - Not guaranteed values



AC Induction Motor Performance Data

Record # 35722 - Typical performance - not guaranteed values

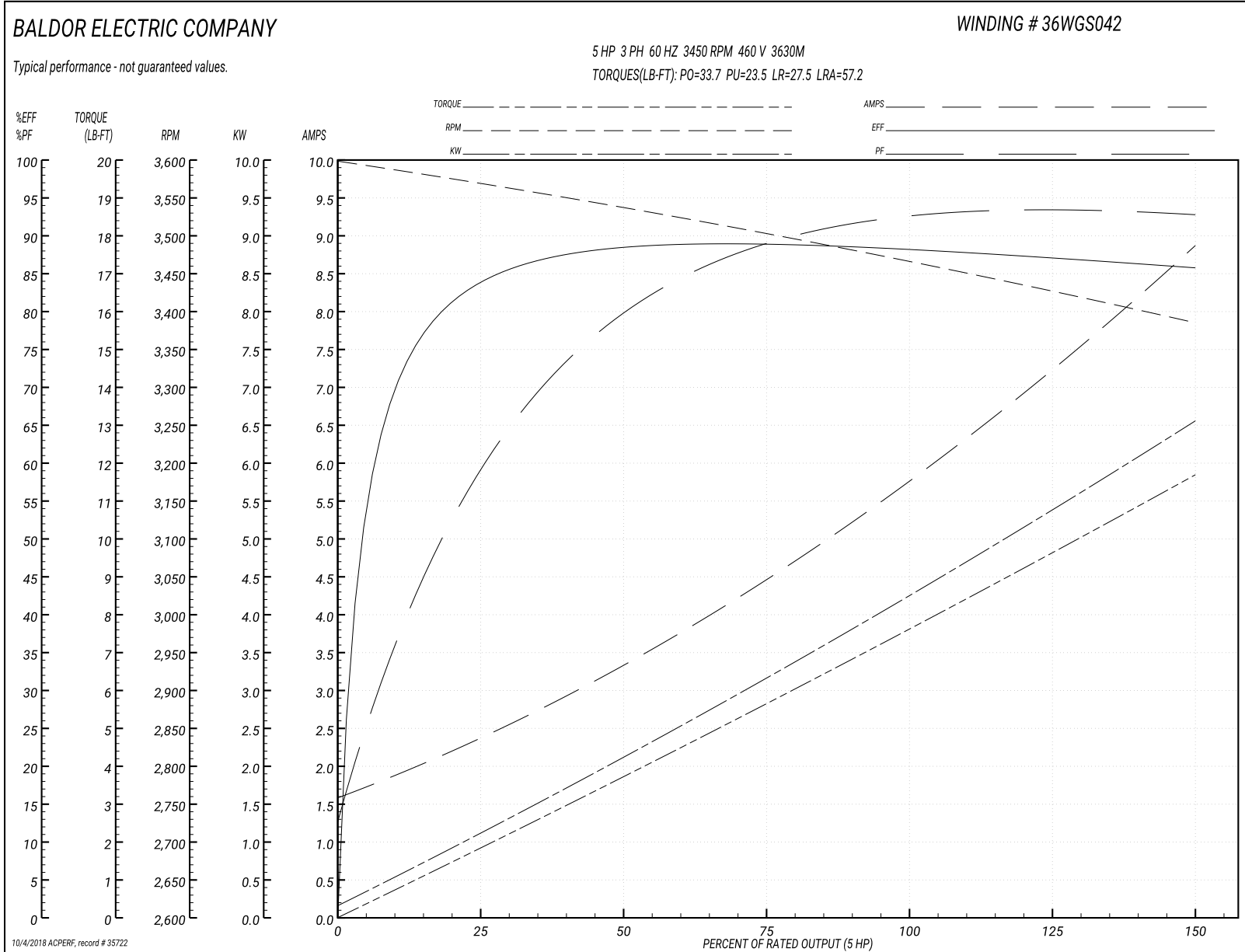
| | | |
|-------------------------------|--------------------|------------------------|
| Winding: 36WGS042-R003 | Type: 3630M | Enclosure: TEFC |
|-------------------------------|--------------------|------------------------|

| Nameplate Data | | | | 460 V, 60 Hz: High Voltage Connection | |
|-----------------------|--------------|--------------|----|--|--------------------------|
| Rated Output (HP) | 5 | | | Full Load Torque | 7.64 LB-FT |
| Volts | 230/460 | | | Start Configuration | direct on line |
| Full Load Amps | 11.8/5.9 | | | Breakdown Torque | 33.7 LB-FT |
| R.P.M. | 3450 | | | Pull-up Torque | 23.5 LB-FT |
| Hz | 60 | Phase | 3 | Locked-rotor Torque | 27.5 LB-FT |
| NEMA Design Code | A | KVA Code | L | Starting Current | 57.2 A |
| Service Factor (S.F.) | 1.15 | | | No-load Current | 1.68 A |
| NEMA Nom. Eff. | 88.5 | Power Factor | 91 | Line-line Res. @ 25°C | 2.27 Ω |
| Rating - Duty | 40C AMB-CONT | | | Temp. Rise @ Rated Load | 72°C |
| S.F. Amps | | | | Temp. Rise @ S.F. Load | 88°C |
| | | | | Locked-rotor Power Factor | 45 |
| | | | | Rotor inertia | 0.134 LB-FT ² |

Load Characteristics 460 V, 60 Hz, 5 HP

| % of Rated Load | 25 | 50 | 75 | 100 | 125 | 150 | S.F. |
|-----------------|------|------|------|------|------|------|------|
| Power Factor | 62 | 81 | 88 | 91 | 93 | 94 | 92 |
| Efficiency | 83.2 | 88.4 | 89.1 | 88.3 | 87 | 85.8 | 87.5 |
| Speed | 3569 | 3537 | 3504 | 3466 | 3428 | 3385 | 3443 |
| Line amperes | 2.24 | 3.26 | 4.47 | 5.85 | 7.26 | 8.8 | 6.7 |

Performance Graph at 460V, 60Hz, 5.0HP Typical performance - Not guaranteed values



AC Induction Motor Performance Data

Record # 59172 - Typical performance - not guaranteed values

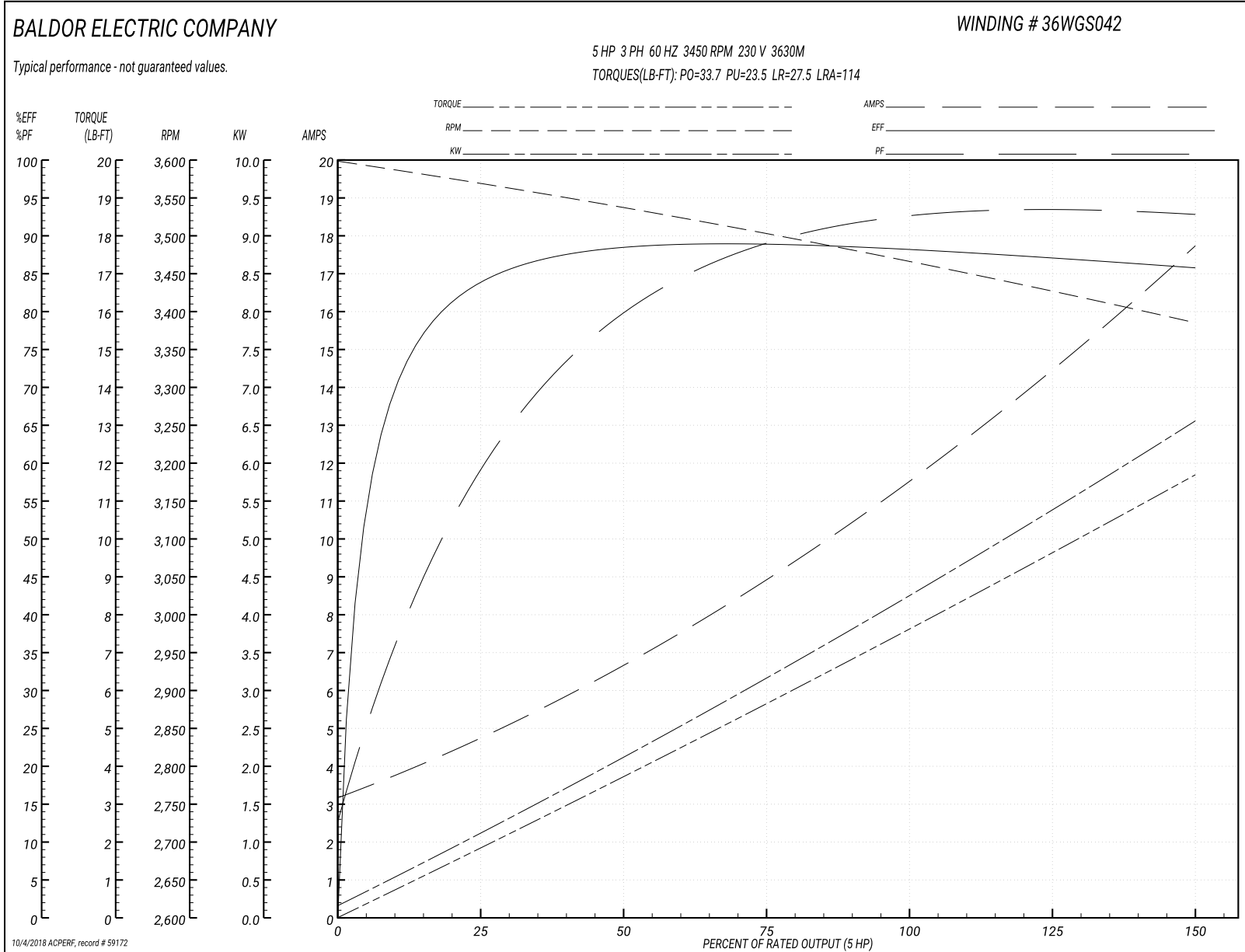
| | | |
|-------------------------------|--------------------|------------------------|
| Winding: 36WGS042-R003 | Type: 3630M | Enclosure: TEFC |
|-------------------------------|--------------------|------------------------|

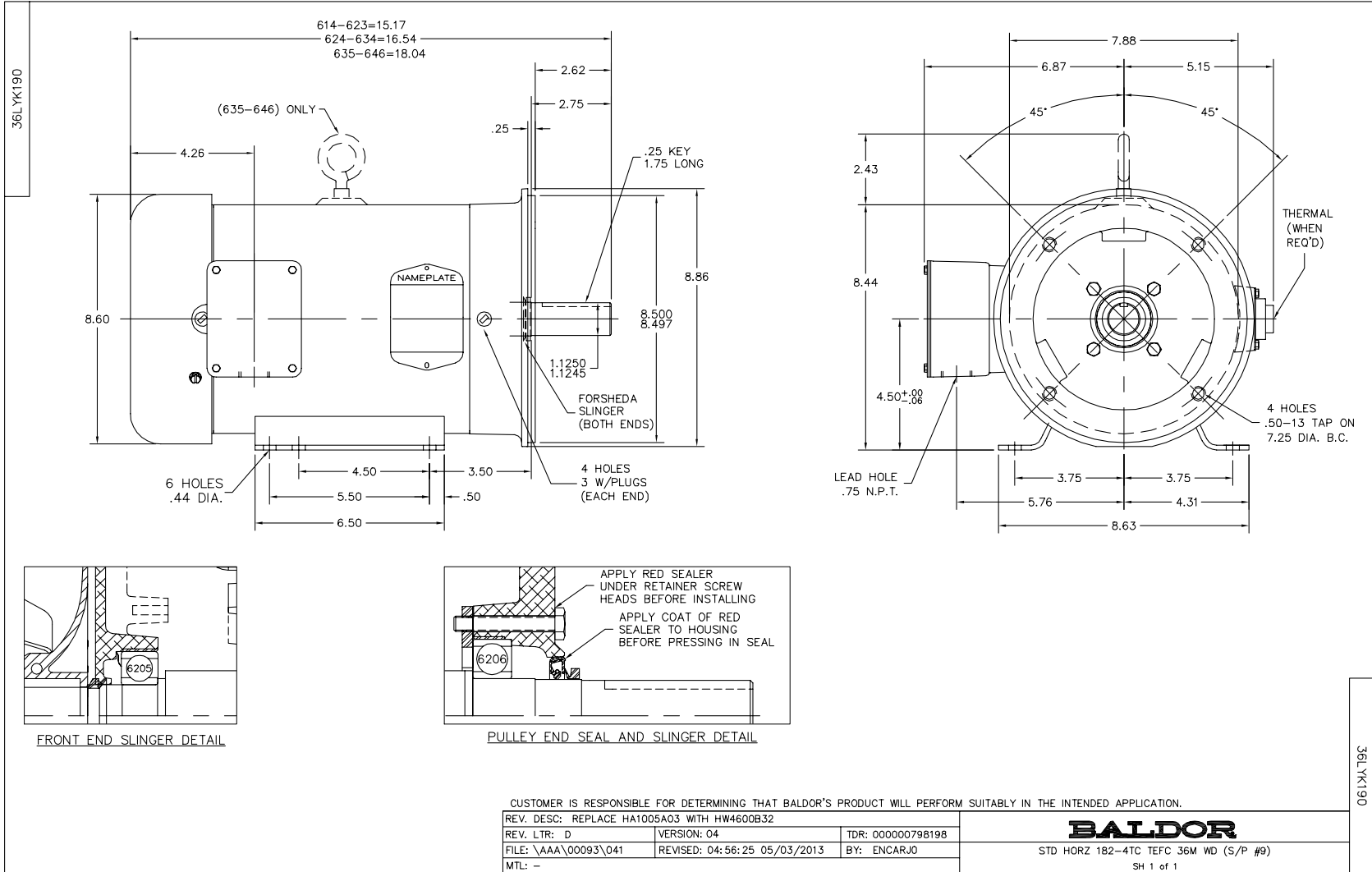
| Nameplate Data | | | | 230 V, 60 Hz: Low Voltage Connection | |
|-----------------------|--------------|--------------|----|---|--------------------------|
| Rated Output (HP) | 5 | | | Full Load Torque | 7.64 LB-FT |
| Volts | 230/460 | | | Start Configuration | direct on line |
| Full Load Amps | 11.8/5.9 | | | Breakdown Torque | 33.7 LB-FT |
| R.P.M. | 3450 | | | Pull-up Torque | 23.5 LB-FT |
| Hz | 60 | Phase | 3 | Locked-rotor Torque | 27.5 LB-FT |
| NEMA Design Code | A | KVA Code | L | Starting Current | 114 A |
| Service Factor (S.F.) | 1.15 | | | No-load Current | 3.36 A |
| NEMA Nom. Eff. | 88.5 | Power Factor | 91 | Line-line Res. @ 25°C | 0.576 Ω |
| Rating - Duty | 40C AMB-CONT | | | Temp. Rise @ Rated Load | 72°C |
| S.F. Amps | | | | Temp. Rise @ S.F. Load | 88°C |
| | | | | Locked-rotor Power Factor | 45.4 |
| | | | | Rotor inertia | 0.134 LB-FT ² |

Load Characteristics 230 V, 60 Hz, 5 HP

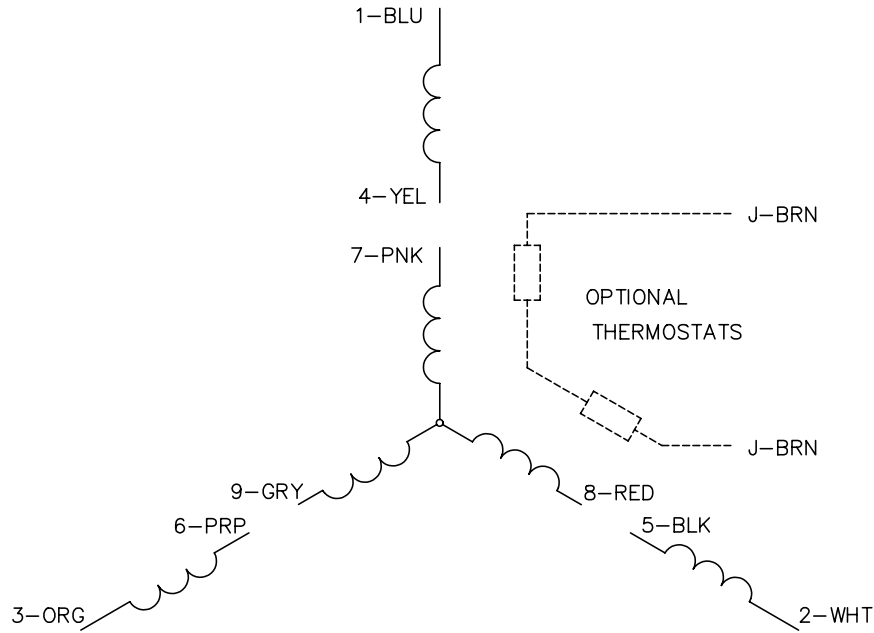
| % of Rated Load | 25 | 50 | 75 | 100 | 125 | 150 | S.F. |
|-----------------|------|------|------|------|------|------|------|
| Power Factor | 62 | 81 | 88 | 91 | 93 | 94 | 92 |
| Efficiency | 83.2 | 88.4 | 89.1 | 88.3 | 87 | 85.8 | 87.5 |
| Speed | 3569 | 3537 | 3504 | 3466 | 3428 | 3385 | 3443 |
| Line amperes | 4.48 | 6.52 | 8.94 | 11.7 | 14.5 | 17.6 | 13.4 |

Performance Graph at 230V, 60Hz, 5.0HP Typical performance - Not guaranteed values

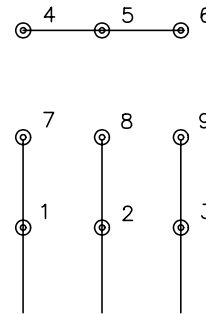




CD0005

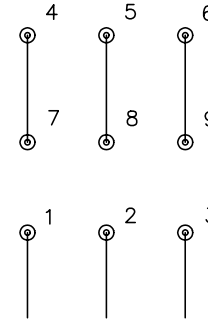


LOW VOLTAGE
(2Y)



LINE

HIGH VOLTAGE
(1Y)



LINE

NOTES:

1. INTERCHANGE ANY TWO LINE LEADS TO REVERSE ROTATION.
2. OPTIONAL THERMOSTATS ARE PROVIDED WHEN SPECIFIED.
3. ACTUAL NUMBER OF INTERNAL PARALLEL CIRCUITS MAY BE A MULTIPLE OF THOSE SHOWN ABOVE.
4. LEAD COLORS ARE OPTIONAL. LEADS MUST ALWAYS BE NUMBERED AS SHOWN.

| | | | |
|---|---------|-------------------------|--------------|
| REV. DESC: REVISE TO SHOW OPTIONAL COLORS | | | |
| REV. LTR: E | BY: JLP | REVISED: 01/19/99 10:15 | TDR: 0171435 |
| 90000 | | FILE: AAA00005140 | MDL: - |
| | | MTL: - | |

BALDOR ELECTRIC Co.

3PH, DV, 9 LEADS

CD0005