

DUTY MASTER ALTERNATING CURRENT MOTORS

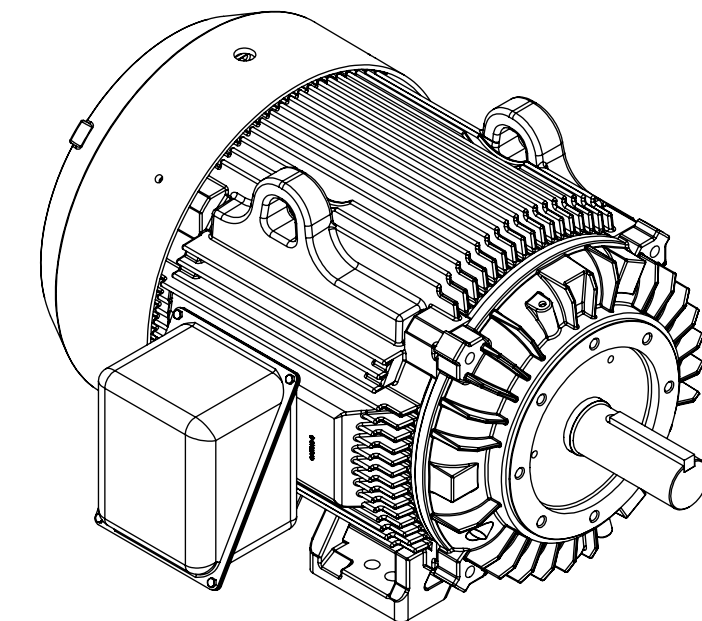
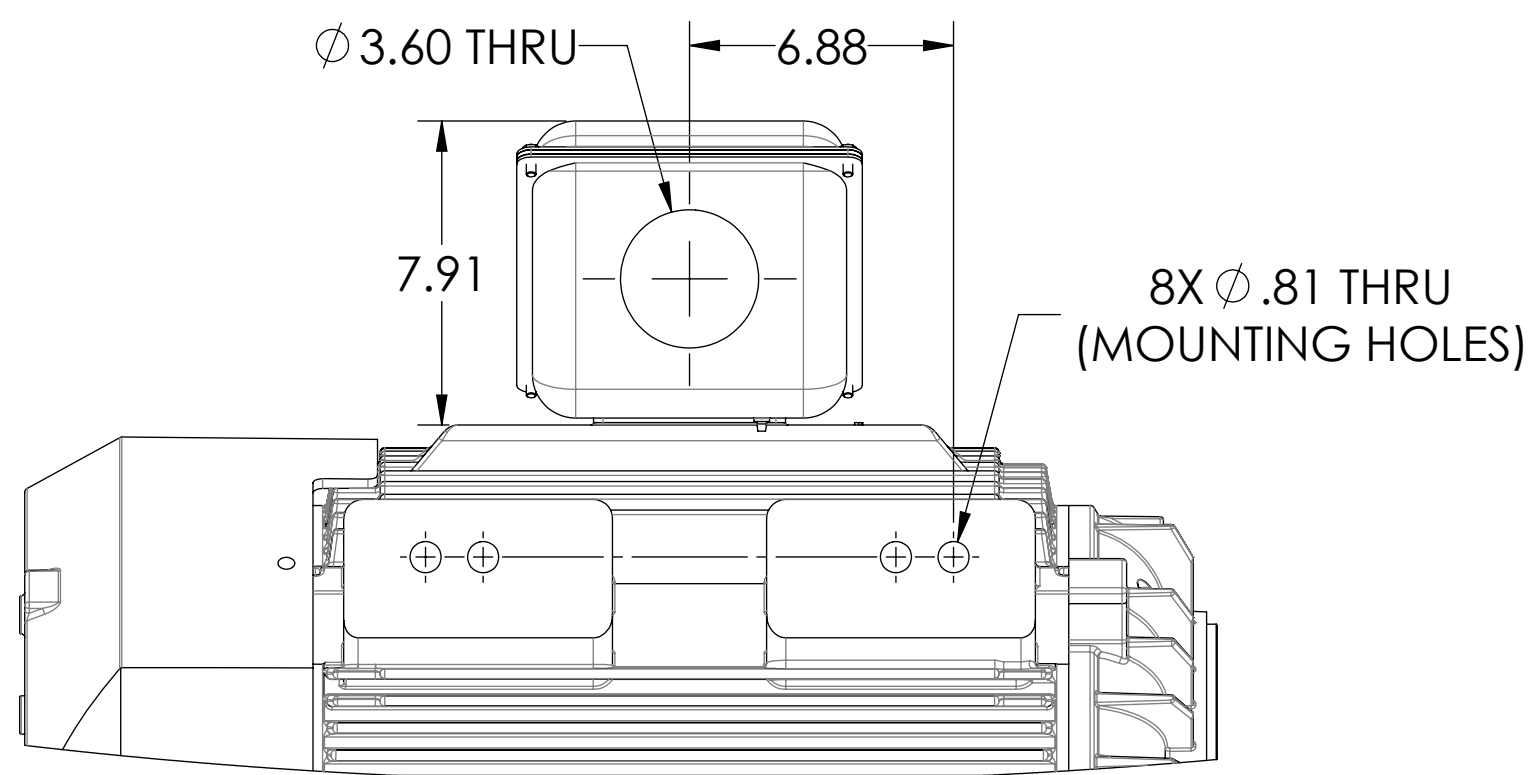
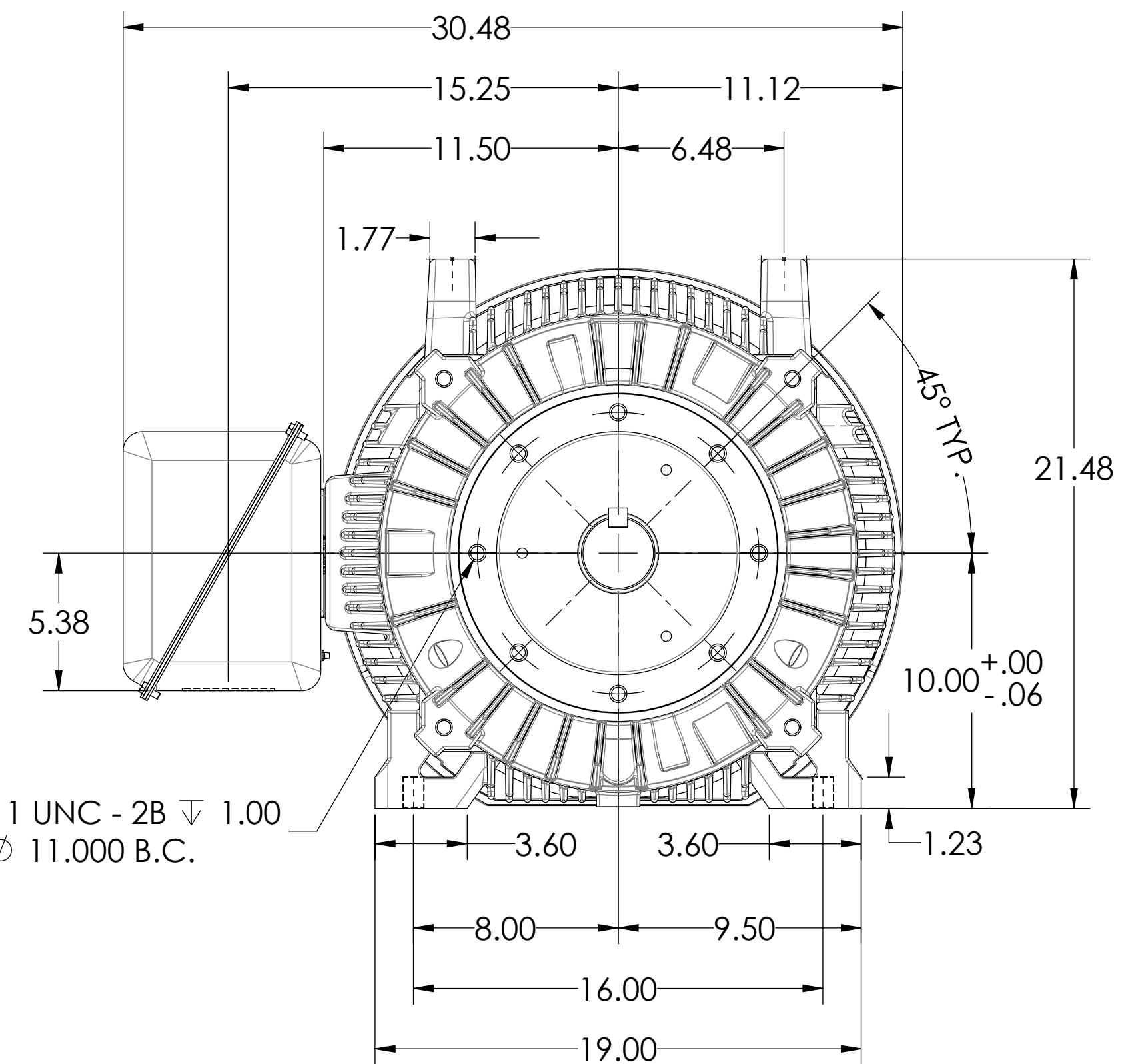
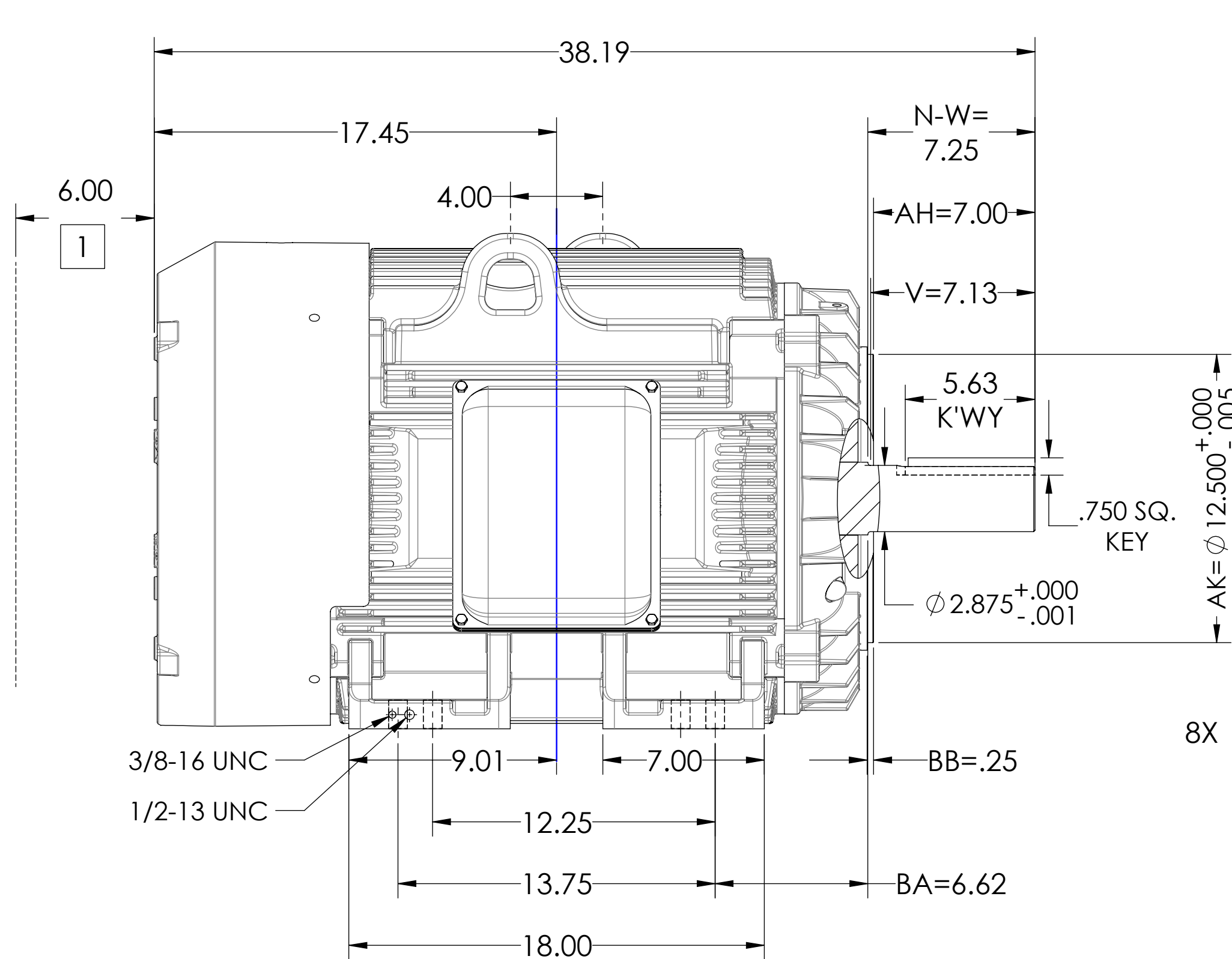
SQUIRREL-CAGE INDUCTION

ENCLOSURE: TOTALLY ENCLOSED

COOLING: FAN COOLED

MOUNTING: FOOT, F-1

G405TC/G404TC FRAME MOUNTING HOLES



1 OBSTRUCTION MUST NOT ENCROACH ON AIR INLET

DIMENSIONS ARE IN INCHES.
WEIGHT (LBS): 1350. MOTOR WEIGHTS MAY VARY BY 15% DEPENDING ON RATING.
CUSTOMER IS RESPONSIBLE FOR DETERMINING THAT MOTOR PERFORMANCE IS SUITABLE IN THE APPLICATION.

REV. DESC: NEW DRAWING			
REV: -	VERSION: 00	REVISED: 08:41:59 06/13/2016	TDR: 000000981952
MODEL NO. 617429-739			REF:
BY: USJEDIL		Material:	

BALDOR

G405TC/404TC TEFC F1 FOOTED SIDE/CENTER STEEL C/BOX