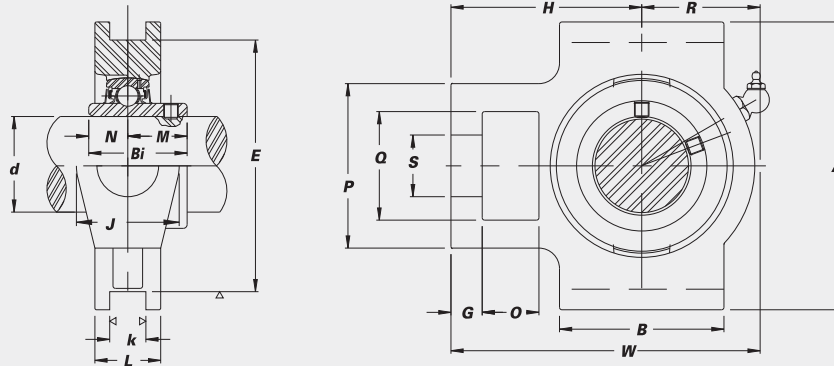


Nickel Plated Take Up Units



Wide slot with Black Oxide bearing insert-BUCNPT

- B-type Seals
- Overview of corrosion resistant products – pg. 48



Unit No.	Shaft Dia.		Dimensions (in.) (mm)															Bearing No.	Housing No.	Weight (lbs.)			
	d (in.)	d (mm)	O	G	P	Q	S	B	k	E	A	W	J	L	R	H	Bi				N	M	
BUCNPT 201-8	1/2																				BUC 201-8		
202-10	5/8		5/8	13/32	2	1 1/4	3/4	2	17/32	3	3 1/2	3 11/16	1 1/4	13/16	1 5/16	2 13/32	1.2205	0.5000	0.7205	BUC 202-10	NPT 204	1.7	
204-12	3/4																						
204		20																					
BUCNPT 205-14	7/8		5/8	13/32	2	1 1/4	3/4	2	17/32	3	3 1/2	3 13/16	1 1/4	1 5/16	1 3/8	2 7/16	1.3386	0.5630	0.7756	BUC 205-14	NPT 205	1.9	
205		25	5/8	13/32	2	1 1/4	3/4	2	17/32	3	3 1/2	3 13/16	1 1/4	1 5/16	1 3/8	2 7/16	1.3386	0.5630	0.7756	205			
205-16	1		5/8	13/32	2	1 1/4	3/4	2	17/32	3	3 1/2	3 13/16	1 1/4	1 5/16	1 3/8	2 7/16	1.3386	0.5630	0.7756	205-16			
BUCNPT 206-18	1 1/8		5/8	13/32	2 1/2	1 5/32	55/64	2 1/4	17/32	3 1/2	4 1/32	4 7/16	1 5/32	1 3/32	1 11/16	2 3/4	1.5000	0.6260	0.8740	BUC 206-18	NPT 206	2.9	
206		30	5/8	13/32	2 1/2	1 5/32	55/64	2 1/4	17/32	3 1/2	4 1/32	4 7/16	1 5/32	1 3/32	1 11/16	2 3/4	1.5000	0.6260	0.8740	206			
206-19	1 3/16		5/8	13/32	2 1/2	1 5/32	55/64	2 1/4	17/32	3 1/2	4 1/32	4 7/16	1 5/32	1 3/32	1 11/16	2 3/4	1.5000	0.6260	0.8740	206-19			
206-20	1 1/4 S		5/8	13/32	2 1/2	1 5/32	55/64	2 1/4	17/32	3 1/2	4 1/32	4 7/16	1 5/32	1 3/32	1 11/16	2 3/4	1.5000	0.6260	0.8740	206-20			
BUCNPT 207-20	1 1/4		5/8	1/2	2 17/32	1 15/32	55/64	2 17/32	17/32	3 1/2	4 1/32	5 3/32	1 15/32	1 3/16	2	3 1/16	1.6890	0.6890	1.0000	BUC 207-20	NPT 207	3.5	
207-22	1 3/8		5/8	1/2	2 17/32	1 15/32	55/64	2 17/32	17/32	3 1/2	4 1/32	5 3/32	1 15/32	1 3/16	2	3 1/16	1.6890	0.6890	1.0000	207-22			
207		35	5/8	1/2	2 17/32	1 15/32	55/64	2 17/32	17/32	3 1/2	4 1/32	5 3/32	1 15/32	1 3/16	2	3 1/16	1.6890	0.6890	1.0000	207			
207-23	1 7/16		5/8	1/2	2 17/32	1 15/32	55/64	2 17/32	17/32	3 1/2	4 1/32	5 3/32	1 15/32	1 3/16	2	3 1/16	1.6890	0.6890	1.0000	207-23			
BUCNPT 208-24	1 1/2		3/4	5/8	3 3/32	1 15/16	1 9/64	3 3/32	1 1/16	4	4 1/2	5 21/32	1 15/16	1 5/16	2 7/32	3 15/32	1.9370	0.7480	1.1890	BUC 208-24	NPT 208	5.5	
208		40	3/4	5/8	3 3/32	1 15/16	1 9/64	3 3/32	1 1/16	4	4 1/2	5 21/32	1 15/16	1 5/16	2 7/32	3 15/32	1.9370	0.7480	1.1890	208			
BUCNPT 209-26	1 5/8		3/4	5/8	3 3/32	1 15/16	1 9/64	3 3/32	1 1/16	4	4 19/32	5 21/32	1 15/16	1 3/8	2 1/4	3 7/16	1.9370	0.7480	1.1890	BUC 209-26	NPT 209	5.5	
209-27	1 11/16		3/4	5/8	3 3/32	1 15/16	1 9/64	3 3/32	1 1/16	4	4 19/32	5 21/32	1 15/16	1 3/8	2 1/4	3 7/16	1.9370	0.7480	1.1890	209-27			
209-28	1 3/4		3/4	5/8	3 3/32	1 15/16	1 9/64	3 3/32	1 1/16	4	4 19/32	5 21/32	1 15/16	1 3/8	2 1/4	3 7/16	1.9370	0.7480	1.1890	209-28			
209		45	3/4	5/8	3 3/32	1 15/16	1 9/64	3 3/32	1 1/16	4	4 19/32	5 21/32	1 15/16	1 3/8	2 1/4	3 7/16	1.9370	0.7480	1.1890	209			
BUCNPT 210-30	1 7/8		3/4	5/8	3 3/32	1 15/16	1 9/64	3 3/8	1 1/16	4	4 19/32	5 7/8	1 15/16	1 15/32	2 5/16	3 17/32	2.0315	0.7480	1.2835	BUC 210-30	NPT 210	5.7	
210-31	1 5/8		3/4	5/8	3 3/32	1 15/16	1 9/64	3 3/8	1 1/16	4	4 19/32	5 7/8	1 15/16	1 15/32	2 5/16	3 17/32	2.0315	0.7480	1.2835	210-31			
210		50	3/4	5/8	3 3/32	1 15/16	1 9/64	3 3/8	1 1/16	4	4 19/32	5 7/8	1 15/16	1 15/32	2 5/16	3 17/32	2.0315	0.7480	1.2835	210			
210-32	2 S		3/4	5/8	3 3/32	1 15/16	1 9/64	3 3/8	1 1/16	4	4 19/32	5 7/8	1 15/16	1 15/32	2 5/16	3 17/32	2.0315	0.7480	1.2835	210-32			
BUCNPT 211-32	2		1	3/4	4 1/32	2 17/32	1 3/8	3 3/4	1 1/16	5 1/8	5 3/4	6 23/32	2 17/32	1 1/2	2 9/16	4 9/16	2.1890	0.8740	1.3150	BUC 211-32	NPT 211	8.8	
211		55	1	3/4	4 1/32	2 17/32	1 3/8	3 3/4	1 1/16	5 1/8	5 3/4	6 23/32	2 17/32	1 1/2	2 9/16	4 9/16	2.1890	0.8740	1.3150	211			
211-35	2 3/16		1	3/4	4 1/32	2 17/32	1 3/8	3 3/4	1 1/16	5 1/8	5 3/4	6 23/32	2 17/32	1 1/2	2 9/16	4 9/16	2.1890	0.8740	1.3150	211-35			
BUCNPT 212-36	2 1/4		1 1/4	3/4	4 1/32	2 17/32	1 3/8	4 1/32	1 1/16	5 1/8	5 3/4	7 5/8	2 17/32	1 21/32	2 15/16	4 11/16	2.5630	1.0000	1.5630	BUC 212-36	NPT 212	10.6	
212		60	1 1/4	3/4	4 1/32	2 17/32	1 3/8	4 1/32	1 1/16	5 1/8	5 3/4	7 5/8	2 17/32	1 21/32	2 15/16	4 11/16	2.5630	1.0000	1.5630	212			
212-39	2 7/16		1 1/4	3/4	4 1/32	2 17/32	1 3/8	4 1/32	1 1/16	5 1/8	5 3/4	7 5/8	2 17/32	1 21/32	2 15/16	4 11/16	2.5630	1.0000	1.5630	212-39			
BUCNPT 213-40	2 1/2		1 1/4	13/16	4 3/8	2 3/4	1 39/64	4 3/4	1 1/16	5 15/16	6 9/16	8 13/16	2 3/4	1 23/32	3 7/16	5 13/32	2.5630	1.0000	1.5630	BUC 213-40	NPT 213	15.2	
213-40			1 1/4	13/16	4 3/8	2 3/4	1 39/64	4 3/4	1 1/16	5 15/16	6 9/16	8 13/16	2 3/4	1 23/32	3 7/16	5 13/32	2.5630	1.0000	1.5630				
BUCNPT 215-47	2 15/16		1 1/4	13/16	4 3/8	2 3/4	1 39/64	4 3/4	1 1/16	5 15/16	6 9/16	9 1/8	2 3/4	1 7/8	3 5/8	5 1/2	3.0630	1.3110	1.7520	BUC 215-47	NPT 215	15.9	
215-48	3		1 1/4	13/16	4 3/8	2 3/4	1 39/64	4 3/4	1 1/16	5 15/16	6 9/16	9 1/8	2 3/4	1 7/8	3 5/8	5 1/2	3.0630	1.3110	1.7520	215-48			

CORROSION RESISTANT