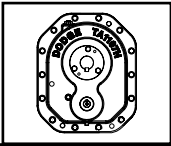
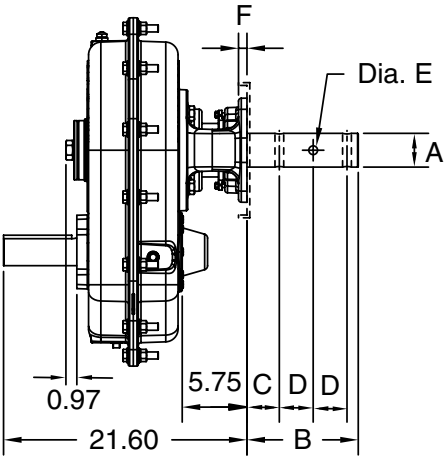
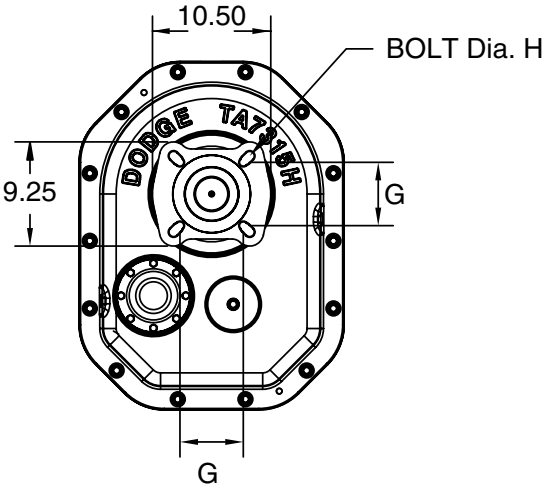


SELECTION/DIMENSIONS

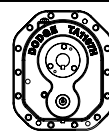


TORQUE-ARM II Shaft Mount Speed Reducers

SCREW CONVEYOR DRIVE - TA7315H, SINGLE AND DOUBLE REDUCTION



EASY SELECTION PAGE 9	SELECTION PAGE 12	RELATED PRODUCTS PAGE 123	ENGINEERING/TECHNICAL PAGE 129
--------------------------	----------------------	------------------------------	-----------------------------------



SELECTION/DIMENSIONS

TORQUE-ARM II Shaft Mount Speed Reducers

SCREW CONVEYOR DRIVE - TA7315H, SINGLE AND DOUBLE REDUCTION

TA7315H Screw Conveyor Drive Dimensions

Screw Dia	Drive Shaft Dia A	Dimensions						
		B	C	D	Hole Dia E	F	G	Bolt Dia H
12, 14	2-7/16	9.69	2.75	3.00	21/32	0.75	5.63	5/8
12, 14, 16, 18, 20	3	9.88	2.88	3.00	25/32	0.75	6.00	3/4
18, 20, 24	3-7/16	13.13	3.88	4.00	29/32	0.75	6.75	3/4

TA7315H Accessories for Screw Conveyor Drives (1) (4)

Description	Part Number	Weight lbs.
TA7315SCA Adapter & Hardware Kit ⁽²⁾	907070	50.1
TA7315SCP Adjustable Packing Kit ⁽³⁾	907071	2.5
TA7315SCS x 2-7/16 Drive Shaft	907074	77.0
TA7315SCS x 3 Drive Shaft	907075	83.4
TA7315SCS x 3-7/16 Drive Shaft	907076	97.3
TA7315SCS x 2-7/16 Stainless Steel Drive Shaft	907082	77.0
TA7315SCS x 3 Stainless Steel Drive Shaft	907083	83.4
TA7315SCS x 3-7/16 Stainless Steel Drive Shaft	907084	97.3

- (1) See page 93 for Belt Guard for Screw Conveyor Drive applications.
- (2) SCA Adapter & Hardware Kit includes adapter, mounting wedge, keeper plate, key, seals and hardware.
- (3) SCP Adjustable Packing Kit consists of flange, mounting hardware and braided packing seals.
- (4) SCS Drive Shaft is a shaft only. Mounting hardware is stocked with the adapter & hardware kit.