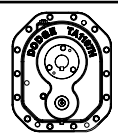
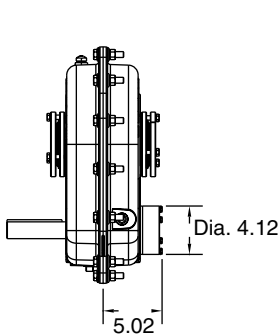
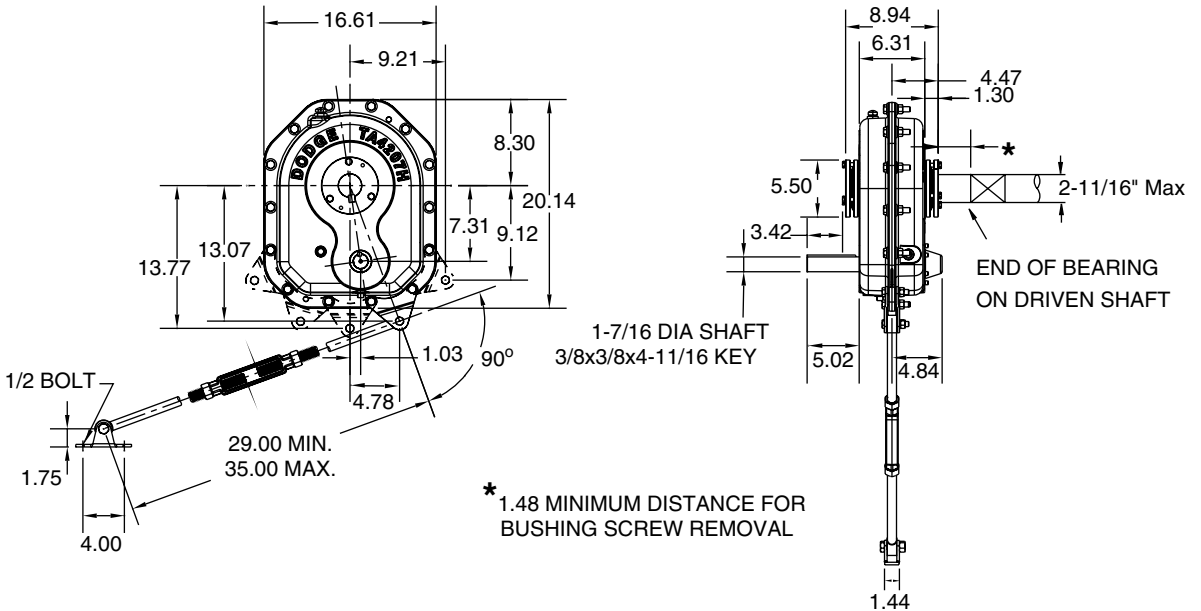


SELECTION/DIMENSIONS

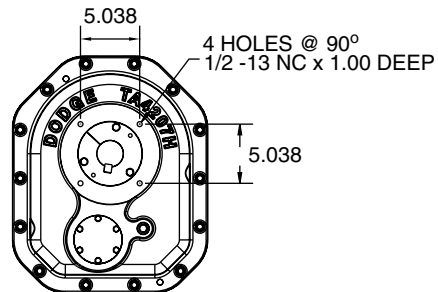


TORQUE-ARM II Shaft Mount Speed Reducers

TAPER BUSHED REDUCERS - TA4207H, SINGLE AND DOUBLE REDUCTION

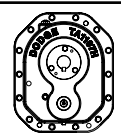


REDUCER WITH BACKSTOP



FLANGE MOUNTING DIMENSIONS

EASY SELECTION PAGE 9	SELECTION PAGE 12	RELATED PRODUCTS PAGE 123	ENGINEERING/TECHNICAL PAGE 129
--------------------------	----------------------	------------------------------	-----------------------------------



SELECTION/DIMENSIONS

TORQUE-ARM II Shaft Mount Speed Reducers

TAPER BUSHED REDUCERS - TA4207H, SINGLE AND DOUBLE REDUCTION

TA4207H Taper Bushed Reducers ⁽¹⁾ ■

Reducer Size	Part Number	AGMA Code	Actual Ratio	Weight lbs.
TA4207H05	904004	207S05	5.00	178.5
TA4207H09	904003	207D09	9.23	187.1
TA4207H15	904002	207D15	15.00	186.7
TA4207H25	904001	207D25	25.13	186.0
TA4207H40	904000	207D40	39.11	185.4

(1) Reducers are supplied from stock ready for vertical mounting and for flange mounting. Rod assembly is not included with reducer. Order as a separate part number.

■ - See page 124 for Maximum Bore Straight Bore TA II Reducers

TA4207H Accessories

Description	Part Number	Weight lbs.
TA4207RA Rod Assembly ⁽¹⁾	904109	10.6
TA4207BS Backstop Assembly ⁽²⁾	904102	5.2
TA4207BS 40:1 Backstop Assembly ⁽²⁾	904103	5.2
TA4207MM Motor Mount Assembly (143-326T) ⁽³⁾	904090	114.3
TA4207BG Belt Guard - Pos. B (143-326T)	904096	79.6
TA4207BG Belt Guard - Pos. C (143-326T) ⁽⁴⁾	904097	82.7
TA4207CF Cooling Fan Assembly ●	904106	2.0
TA4-TA12 Vertical Breather Kit	904112	3.0
Filter Breather Assy	430049	0.2

(2) See page 129 for input shaft speed necessary for backstop sprag lift-off

(3) Motor Mount will fit NEMA and IEC frame motors; however hardware are inch dimensions

(4) Use this belt guard for TA II reducer in screw conveyor drive applications

● See page 122 for cooling fan dimensions

TA4207H Tapered Bushing Kits ⁽⁵⁾ (6)

Bushing Size Standard Shaft Bushing Kit	Part Number (7)	Weight lbs.	Shaft Keyseat Required (9) (10)	Bushing Size	Part Number	Weight lbs.	Shaft Keyseat Required (9) (10)
				Short Shaft Bushing Kit (8)			
TA4207TB x 2-11/16	904020	9.4	5/8 x 5/16 x 8.93	---	---	---	---
TA4207TB x 2-1/2	904021	10.6	5/8 x 5/16 x 8.93	---	---	---	---
TA4207TB x 2-7/16 ▲	904022	10.8	5/8 x 5/16 x 8.93	TA4207TBS x 2-7/16	904032	11.3	5/8 x 5/16 x 5.65
TA4207TB x 2-3/8	904023	11.3	5/8 x 5/16 x 8.93	TA4207TBS x 2-3/8	904033	11.8	5/8 x 5/16 x 5.65
TA4207TB x 2-1/4	904024	11.5	1/2 x 1/4 x 8.93	TA4207TBS x 2-1/4	904034	12.4	1/2 x 1/4 x 5.65
TA4207TB x 2-3/16	904025	11.8	1/2 x 1/4 x 8.93	TA4207TBS x 2-3/16	904035	10.8	1/2 x 1/4 x 5.65
TA4207TB x 2-1/8	904026	12.2	1/2 x 1/4 x 8.93	TA4207TBS x 2-1/8	904036	13.3	1/2 x 1/4 x 5.65
TA4207TB x 2	904027	12.6	1/2 x 1/4 x 8.93	TA4207TBS x 2	904037	13.9	1/2 x 1/4 x 5.65
TA4207TB x 1-15/16	904028	13.0	1/2 x 1/4 x 8.93	TA4207TBS x 1-15/16	904038	14.3	1/2 x 1/4 x 5.65
TA4207TB x 1-7/8	904029	13.2	1/2 x 1/4 x 8.93	TA4207TBS x 1-7/8	904039	14.6	1/2 x 1/4 x 5.65
TA4207TB x 1-3/4	904030	13.3	3/8 x 3/16 x 8.93	TA4207TBS x 1-3/4	904040	15.0	3/8 x 3/16 x 5.65
TA4207TB x 1-11/16	904031	13.5	3/8 x 3/16 x 8.93	TA4207TBS x 1-11/16	904041	15.3	3/8 x 3/16 x 5.65

▲ AGMA maximum bore size

(5) Bushing kit required to mount TA II reducer to driven shaft

(6) Bushing kit is not required to mount TA II reducer on SCS Drive Shaft in a screw conveyor application

(7) Standard Shaft Bushing Kit includes two standard bushings with back-up plates and snap rings, hardware and key

(8) Short Shaft Bushing Kit includes one standard bushing; one long bushing with insertable wedge; two backup plates with snap rings; hardware and key. This is an optional bushing for after market, short shaft mounting.

(9) Minimum keyseat and shaft length required to mount reducer with bushing kit

(10) Always check the driven shaft and key for strength

EASY SELECTION PAGE 9	SELECTION PAGE 12	RELATED PRODUCTS PAGE 123	ENGINEERING/TECHNICAL PAGE 129
--------------------------	----------------------	------------------------------	-----------------------------------