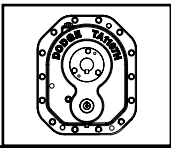
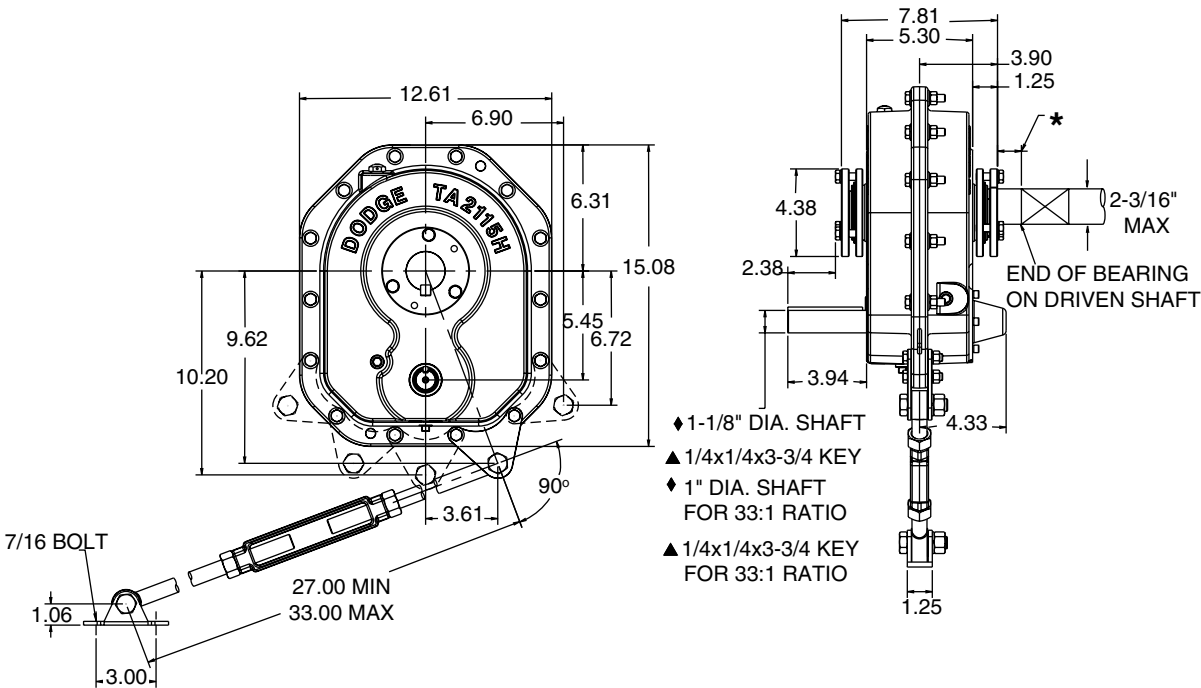


SELECTION/DIMENSIONS

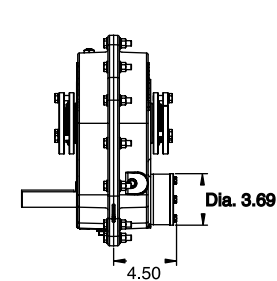


TORQUE-ARM II Shaft Mount Speed Reducers

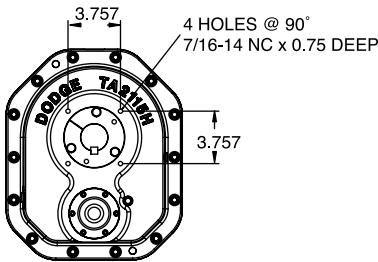
TAPER BUSHED REDUCER - TA2115H, SINGLE AND DOUBLE REDUCTION



* 1.20" MINIMUM DISTANCE FOR BUSHING SCREW REMOVAL

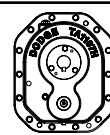


REDUCER WITH BACKSTOP



FLANGE MOUNTING DIMENSIONS

EASY SELECTION PAGE 9	SELECTION PAGE 12	RELATED PRODUCTS PAGE 123	ENGINEERING/TECHNICAL PAGE 129
--------------------------	----------------------	------------------------------	-----------------------------------



SELECTION/DIMENSIONS

TORQUE-ARM II Shaft Mount Speed Reducers

TAPER BUSHED REDUCER - TA2115H, SINGLE AND DOUBLE REDUCTION

TA2115H Taper Bushed Reducers ⁽¹⁾

Reducer Size	Part Number	AGMA Code	Actual Ratio	Weight lbs.
TA2115H05	902004	115S05	5.20	84.2
TA2115H09	902003	115D09	9.10	86.5
TA2115H15	902002	115D15	15.62	86.3
TA2115H25	902001	115D25	25.07	86.1
TA2115H33	902000	115D33	33.33	85.7

- (1) Reducers are supplied from stock ready for vertical mounting and for flange mounting. Rod assembly is not included with reducer. Order as a separate part number.

TA2115H Accessories

Description	Part Number	Weight lbs.
TA2115RA Rod Assembly ⁽¹⁾	902109	6.9
TA2115BS Backstop Assembly ⁽²⁾	902102	3.9
TA2115MM Motor Mount Assembly (56-256T) ⁽³⁾	902090	52.6
TA2115BG Belt Guard - Pos. B (56-256T)	902096	47.7
TA2115BG Belt Guard - Pos. C (56-256T) ⁽⁴⁾	902097	52.1
TA0-TA3 Vertical Breather Kit	900112	2.0
Filter Breather Plug	430048	0.2

- (2) See page 129 for input shaft speed necessary for backstop sprag lift-off
- (3) Motor Mount will fit NEMA and IEC frame motors; however hardware are inch dimensions
- (4) Use this belt guard for TA II reducer in screw conveyor drive applications

TA2115H Tapered Bushing Kits ^{(5) (6)}

Bushing Size	Part Number	Weight lbs.	Shaft Keyseat Required ^{(9) (10)}	Bushing Size	Part Number	Weight lbs.	Shaft Keyseat Required ^{(9) (10)}
Standard Shaft Bushing Kit	(7)			Short Shaft Bushing Kit ⁽⁸⁾			
TA2115TB x 2-3/16	902020	4.7	1/2 x 1/4 x 7.80	---	---	---	---
TA2115TB x 2-1/8	902021	4.9	1/2 x 1/4 x 7.80	---	---	---	---
TA2115TB x 2	902022	5.2	1/2 x 1/4 x 7.80	---	---	---	---
TA2115TB x 1-15/16 ▲	902023	5.4	1/2 x 1/4 x 7.80	TA2115TBS x 1-15/16	902030	5.6	1/2 x 1/4 x 4.80
TA2115TB x 1-7/8	902024	5.6	1/2 x 1/4 x 7.80	TA2115TBS x 1-7/8	902031	5.9	1/2 x 1/4 x 4.80
TA2115TB x 1-3/4	902025	5.8	3/8 x 3/16 x 7.80	TA2115TBS x 1-3/4	902032	6	3/8 x 3/16 x 4.80
TA2115TB x 1-11/16	902026	6.1	3/8 x 3/16 x 7.80	TA2115TBS x 1-11/16	902033	6.6	3/8 x 3/16 x 4.80
TA2115TB x 1-5/8	902027	6.0	3/8 x 3/16 x 7.80	TA2115TBS x 1-5/8	902034	6.8	3/8 x 3/16 x 4.80
TA2115TB x 1-1/2	902028	6.4	3/8 x 3/16 x 7.80	TA2115TBS x 1-1/2	902035	7.3	3/8 x 3/16 x 4.80
TA2115TB x 1-7/16	902029	6.4	3/8 x 3/16 x 7.80	TA2115TBS x 1-7/16	902036	7.4	3/8 x 3/16 x 4.80
TA2115TB x 1-3/8	902060	6.5	5/16 x 5/32 x 7.80	TA2115TBS x 1-3/8	902037	7.6	5/16 x 5/32 x 4.80
TA2115TB x 1-5/16	902061	6.7	5/16 x 5/32 x 7.80	TA2115TBS x 1-5/16	902038	7.8	5/16 x 5/32 x 4.80

▲ AGMA maximum bore size

- (5) Bushing kit required to mount TA II reducer to driven shaft
- (6) Bushing kit is not required to mount TA II reducer on SCS Drive Shaft in a screw conveyor application
- (7) Standard Shaft Bushing Kit includes two standard bushings with back-up plates and snap rings, hardware and key
- (8) Short Shaft Bushing Kit includes one standard bushing; one long bushing with insertable wedge; two backup plates with snap rings; hardware and key. This is an optional bushing for after market, short shaft mounting.
- (9) Minimum keyseat and shaft length required to mount reducer with bushing kit
- (10) Always check the driven shaft and key for strength

EASY SELECTION PAGE 9	SELECTION PAGE 12	RELATED PRODUCTS PAGE 123	ENGINEERING/TECHNICAL PAGE 129
--------------------------	----------------------	------------------------------	-----------------------------------