

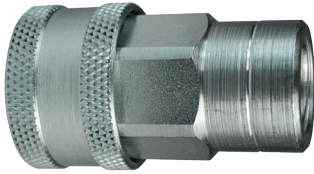
AG-Series Hydraulic Couplings

Application:

- used on construction equipment, farm implements and most other mobile equipment

Features:

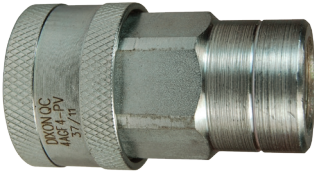
- ball style shut-off valves in both the coupler and the plug
- interchangeable with Pioneer 4000 series, see Hydraulic Profile Chart on page H-27
- Contact Dixon® for pressure ratings and other technical information.



AG-Series Agricultural Ball Couplers

Body Size	Female Threads	Previous Part #	Steel	
			Part #	Price/E
1/4"	1/4" - 18 NPTF	---	2AGF2	\$24.43
3/8"	3/8" - 18 NPTF	---	3AGF3	25.63
1/2"	1/2" - 14 NPTF	18-400	4AGF4	29.20
	1/2" - 14 BSPP	---	4AGBF4	33.97
	3/4" - 16 ORB	18-415	4AGOF4	33.97
	7/8" - 14 ORB	---	4AGOF5	35.76
3/4"	3/4" - 14 NPTF	18-600	4AGF6	48.28
	3/4" - 14 NPTF	18-660	6AGF6	65.56
1"	1" - 11 1/2 NPTF	---	8AGF8	88.21

AG-Series Agricultural Poppet Valve Couplers



Body Size	Female Threads	Previous Part #	Steel	
			Part #	Price/E
1/4"	1/4" - 18 NPTF	18-200	2AGF2-PV	\$24.43
3/8"	3/8" - 18 NPTF	18-300	3AGF3-PV	25.63
1/2"	1/2" - 14 NPTF	---	4AGF4-PV	27.55
	1/2" - 14 BSPP	---	4AGBF4-PV	32.05
	3/4" - 16 ORB	---	4AGOF4-PV	32.05
	7/8" - 14 ORB	---	4AGOF5-PV	33.73
3/4"	3/4" - 14 NPTF	---	4AGF6-PV	45.55
	3/4" - 14 NPTF	---	6AGF6-PV	65.56
1"	1" - 11 1/2 NPTF	18-800	8AGF8-PV	88.21

AG-Series Agricultural Push-Pull Ball Couplers



Body Size	Female Threads	Previous Part #	Steel	
			Part #	Price/E
3/8"	3/8" - 18 NPTF	---	3AGF3-PS	\$37.38
1/2"	1/2" - 14 NPTF	---	4AGF4-PS	41.73
	3/4" - 16 ORB	---	4AGOF4-PS	43.15
	7/8" - 14 ORB	---	4AGOF5-PS	44.64
	3/4" - 14 NPTF	---	4AGF6-PS	44.65
3/4"	3/4" - 14 NPTF	---	6AGF6-PS	95.31

AG-Series Agricultural Push-Pull Poppet Valve Couplers



Body Size	Female Threads	Previous Part #	Steel	
			Part #	Price/E
3/8"	3/8" - 18 NPTF	---	3AGF3-PV-PS	\$37.38
1/2"	1/2" - 14 NPTF	---	4AGF4-PV-PS	41.73
	3/4" - 16 ORB	---	4AGOF4-PV-PS	43.15
	7/8" - 14 ORB	---	4AGOF5-PV-PS	44.65
	3/4" - 14 NPTF	---	4AGF6-PV-PS	42.91
3/4"	3/4" - 14 NPTF	---	6AGF6-PV-PS	95.31