

Ground Fault Products

15A, 125V

Circuit Guard® GFCI Receptacles

HUBBELL

Features

- Ground fault EOL indicator
- Comprehensive diagnostics
- No power at face if reverse wired
- Automatic self-grounding staple makes installation ease

Ordering Information

Description	Device Color	UPC	Catalog Number
Flush, nylon face, back	Brown	883778379000	GF15LA

Listings

Meets UL498 for receptacles
UL943 Class A for GFCIs UL File E41978
CSA Certified

Specifications

Trip Level	4 to 6 mA
Trip Time	.025 second nominal
Frequency	60 Hz
Codes	Meets all NEC® and CEC requirements

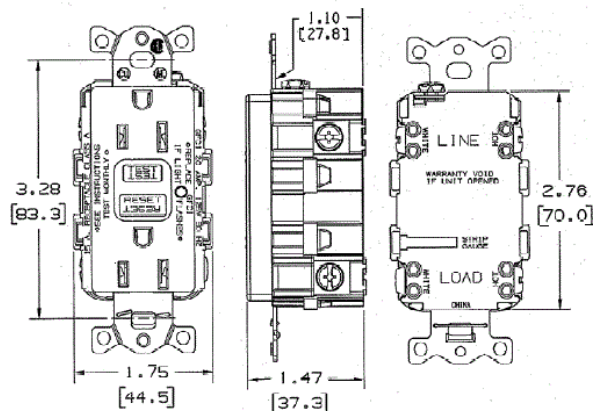
Performance

Electrical

Amperage	15A/20A, 20A Feed Thru
Max. Interrupting Capacity	10,000A
Voltage	120V AC +10% - 15% (102V to 132V)

Environmental

Maximum Humidity	0.95
Operating Temperature	-35°C to 66°C or -30°F to 150°F.



Online Resources

[Customer Use Drawing](#)
[eCatalog](#)
[Installation Instructions](#)

Dimensions in Inches (mm)

Hubbell Wiring Device-Kellems • Hubbell Incorporated (Delaware) • 40 Waterview Drive • Shelton, CT 06484

Phone (800) 288-6000 • Fax (800) 255-1031 • Specifications subject to change without notice.

