

PRODUCT INFORMATION PACKET

marathon[®]
Motors

Model No: 143TTGN16539
Catalog No: C320B
1,1800,EPFC,143TC,3/60,230/460
Explosion Proof



Regal and Marathon are trademarks of Regal Beloit Corporation or one of its affiliated companies.
©2018 Regal Beloit Corporation, All Rights Reserved. MC017097E

REGAL



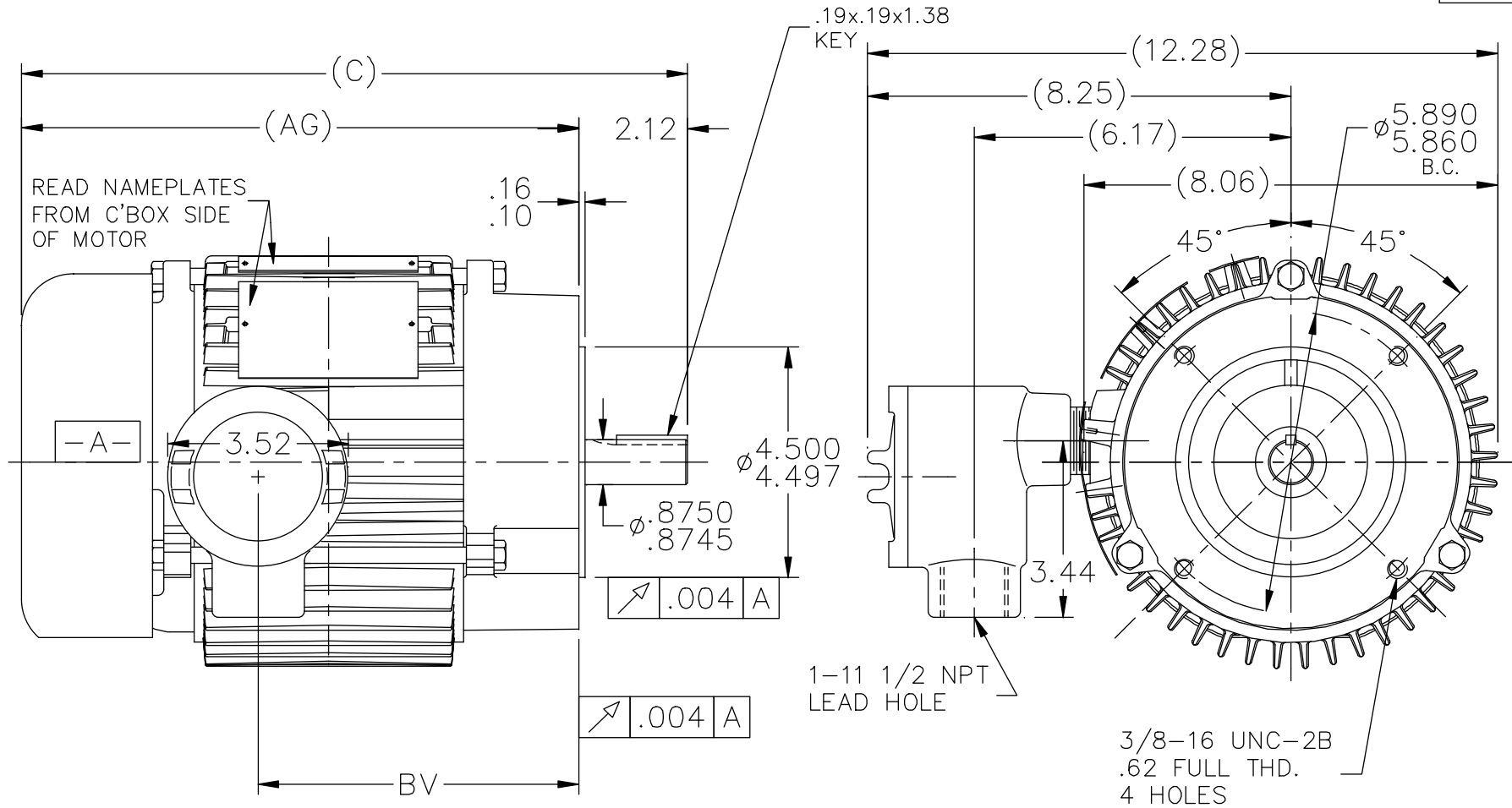
Nameplate Specifications

Output HP	1 Hp	Output KW	0.75 kW
Frequency	60 Hz	Voltage	230/460 V
Current	3.3/1.65 A	Speed	1765 rpm
Service Factor	1.15	Phase	3
Efficiency	85.5 %	Duty	CONTINUOUS
Insulation Class	B	Design Code	B
KVA Code	P	Frame	143TC
Enclosure	EPFC	Overload Protector	NOT
Ambient Temperature	40 °C	Drive End Bearing Size	6205
Opp Drive End Bearing Size	6203	UL	No
CSA	N	CE	N
IP Code	54		

Technical Specifications

Electrical Type	SQ CAGE INV RATED	Starting Method	LINE OR INVERTER
Poles	4	Rotation	REV
Mounting	ROUND	Motor Orientation	HORIZONTAL
Drive End Bearing	BALL	Opp Drive End Bearing	BALL
Frame Material	CAST IRON	Shaft Type	T
Assembly/Box Mounting	F1 ONLY		
Outline Drawing	A-100617-750	Connection Diagram	EE7308T

This is an uncontrolled document once printed or downloaded and is subject to change without notice. Date Created: 04/05/2018



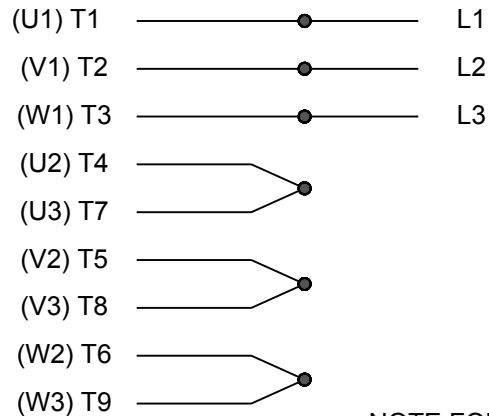
DASH	FR.	C	AG	BV
525	143	12.98	10.86	6.25
625	145	13.98	11.86	7.25
750	143/145	15.18	13.06	8.50

NOTE:

- BOX CAN ONLY BE ROTATED CLOCKWISE UP TO 270° FROM ITS ORIGINAL POSITION.

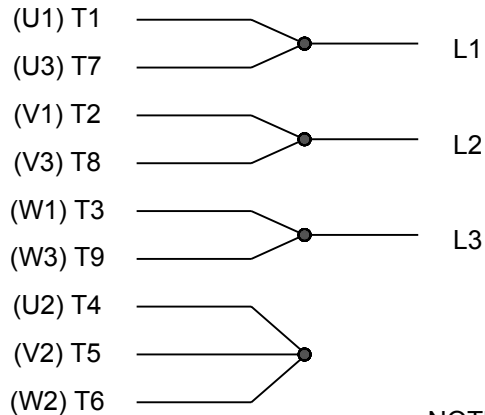
			TOLERANCES UNLESS SPECIFIED		MARATHON ELECTRIC	DRAWN SMC 06-04-1992			
			DEC.	INCHES		CHK	ML	06-05-1992	
			.X	±.1		APPD	JA	06-08-1992	
3	REISSUE ADDED BV DIMENSION	DRS 12-18-1996	.XX	±.03	TITLE OUTLINE 140 FR. BB-EXP. PR. -TS-'C'FACE (629 NEW DESIGN)	SCALE 5=16			
2	REVISE NOTE CN 14695	RM 10-14-1992	.XXX	±.005		REF			
1	NEW DRAWING 3912913	SMC 06-08-1992	.XXXX	±.0005	MAT'L.	FMF			
NO.	REVISION	BY & DATE	CHK	ANG		PREV			
THIS DRAWING IN DESIGN AND DETAIL IS OUR PROPERTY AND MUST NOT BE USED EXCEPT IN CONNECTION WITH OUR WORK ALL RIGHTS OF DESIGN AND INVENTION ARE RESERVED THIS IS AN ELECTRONICALLY GENERATED DOCUMENT - DO NOT SCALE THIS PRINT			RFP		CAD FILE 100617	SIZE A	DRAWING NO. 100617	PAGE OF	REV. 3
			DIST	WP					

HIGH VOLTAGE

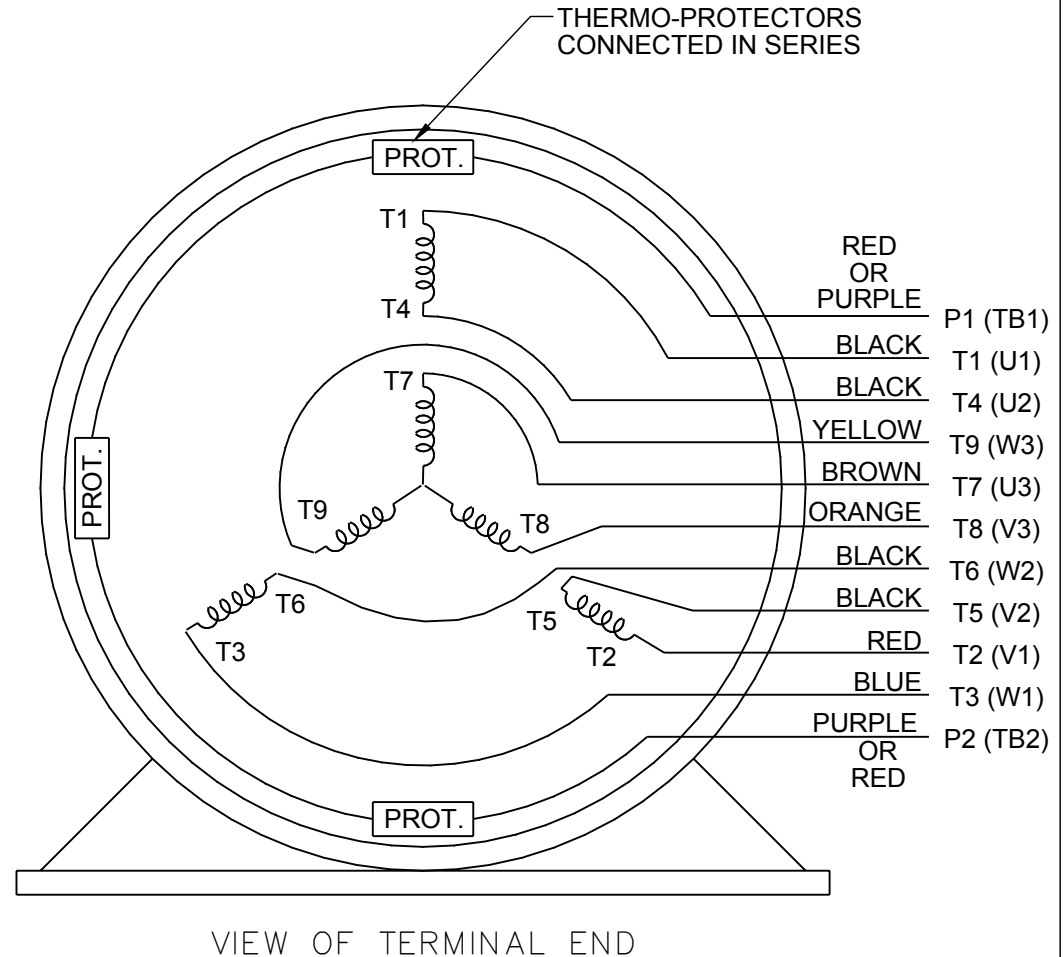


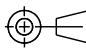
NOTE FOR FACTORY USE ONLY:
 TO SURGE TEST FOR COMMON CONNECT:
 HIGH VOLT: CONNECT P1 TO T1
 THEN P2 TO L1
 LOW VOLT: CONNECT P1 TO T1 & T7,
 THEN P2 TO L1

LOW VOLTAGE



NOTE: LEAD'S COLOR CAN BE YELLOW OR WHITE FOR MT2 PLANT

THREE PHASE
DUAL VOLTAGE MOTOR

DRAWING REVISION R	REVISION BY AJW	DATE 07-17-2015	<div></div>	DRAWN BY SMC	<div><div>REGAL™</div><div>Regal Beloit America, Inc.</div></div>			
ECO ECO-0081632	APPROVED BY T. VUE	DATE 07-17-2015		DATE 05-13-1992				
ECO DESCRIPTION REV'D IEC NOTATIONS PER IEC 60034-8				APPROVED BY TB	DESCRIPTION CONN DIAGRAM-INTERNAL			
COPYRIGHT REGAL BELOIT AMERICA, INC. ALL RIGHTS RESERVED. PROPRIETARY AND CONFIDENTIAL INFORMATION - THIS DOCUMENT IS THE PROPERTY OF REGAL BELOIT AMERICA, INC. ("OWNER") AND CONTAINS OWNER'S PROPRIETARY INFORMATION. ANY PERSON, CORPORATION OR OTHER FIRM RECEIVING IT IS DEEMED, BY RECEIVING IT, TO AGREE THAT IT, AND/OR ANY PART OF IT, SHALL NOT BE DISCLOSED TO ANY PERSON, CORPORATION OR OTHER ENTITY, DUPLICATED, AND/OR USED, EXCEPT AS EXPRESSLY APPROVED IN WRITING IN ADVANCE BY OWNER. THIS DOCUMENT SHALL BE RETURNED TO OWNER UPON REQUEST. IT MAY BE SUBJECT TO CERTAIN RESTRICTIONS UNDER APPLICABLE EXPORT CONTROL LAWS AND REGULATIONS.				DATE 05-13-1992	3 PHASE - DUAL VOLTAGE MOTOR			
				REFERENCE EE7308/EE7300	MATERIAL		PROCESS/FINISH	
				THIRD ANGLE PROJECTION		SIZE A	DRAWING NUMBER EE7308T	