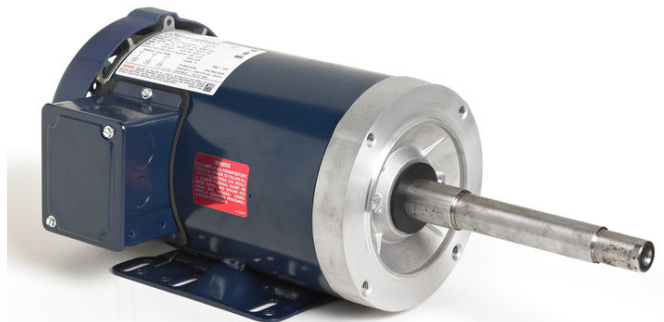


PRODUCT INFORMATION PACKET

marathon®
Motors

Model No: 182TTFBD6085
Catalog No: GT3405A
1 1/2, 1200, TEFC, 182JP, 3/60/230/460
JP



Regal and Marathon are trademarks of Regal Beloit Corporation or one of its affiliated companies.
©2019 Regal Beloit Corporation, All Rights Reserved. MC017097E

REGAL

Nameplate Specifications

Output HP	1.50 Hp	Output KW	1.1 kW
Frequency	60 Hz	Voltage	230/460 V
Current	4.6/2.3 A	Speed	1175 rpm
Service Factor	1.15	Phase	3
Efficiency	87.5 %	Duty	Continuous
Insulation Class	F	Design Code	B
KVA Code	K	Frame	182JP
Enclosure	Totally Enclosed Fan Cooled	Overload Protector	No
Ambient Temperature	40 °C	Drive End Bearing Size	6307
Opp Drive End Bearing Size	6206	UL	Listed
CSA	Y	CE	Y
IP Code	43		

Technical Specifications

Electrical Type	Squirrel Cage Inverter Rated	Starting Method	Line Or Inverter
Poles	6	Rotation	Reversible
Mounting	Rigid Base	Motor Orientation	Horizontal
Drive End Bearing	Ball	Opp Drive End Bearing	Ball
Frame Material	Rolled Steel	Shaft Type	JP
Shaft Diameter	1.25 in	Assembly/Box Mounting	F1/F2 CAPABLE
Outline Drawing	SS600203-182JP	Connection Diagram	EE7308

This is an uncontrolled document once printed or downloaded and is subject to change without notice. Date Created: 02/14/2019

4

3

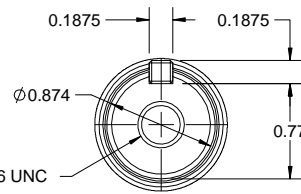
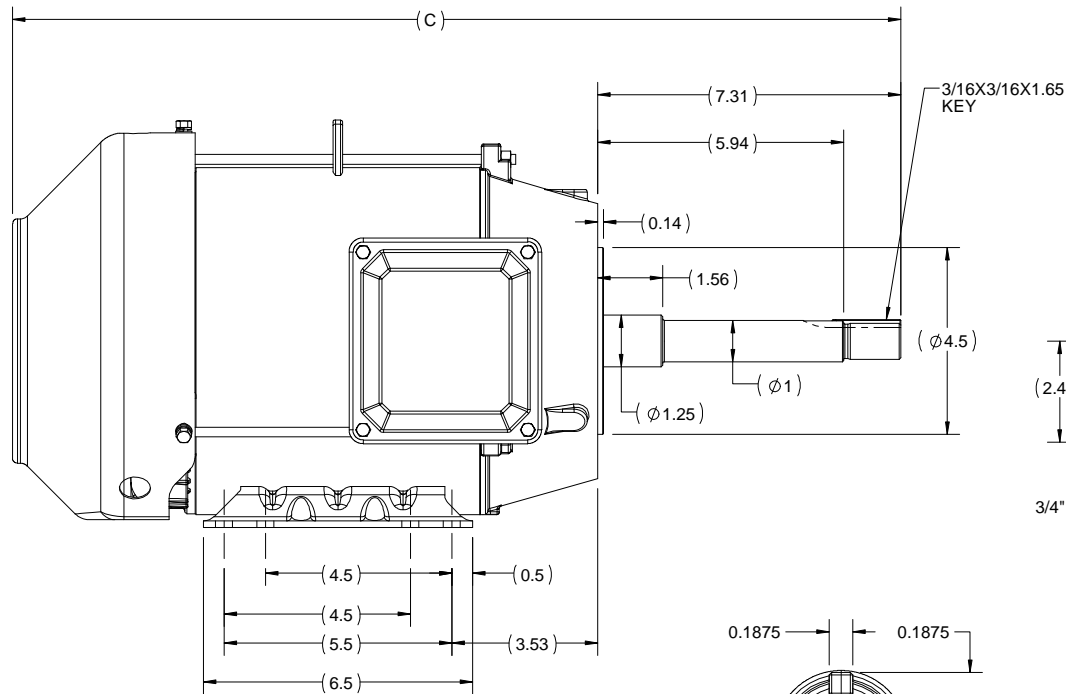
Uncontrolled Copy

2

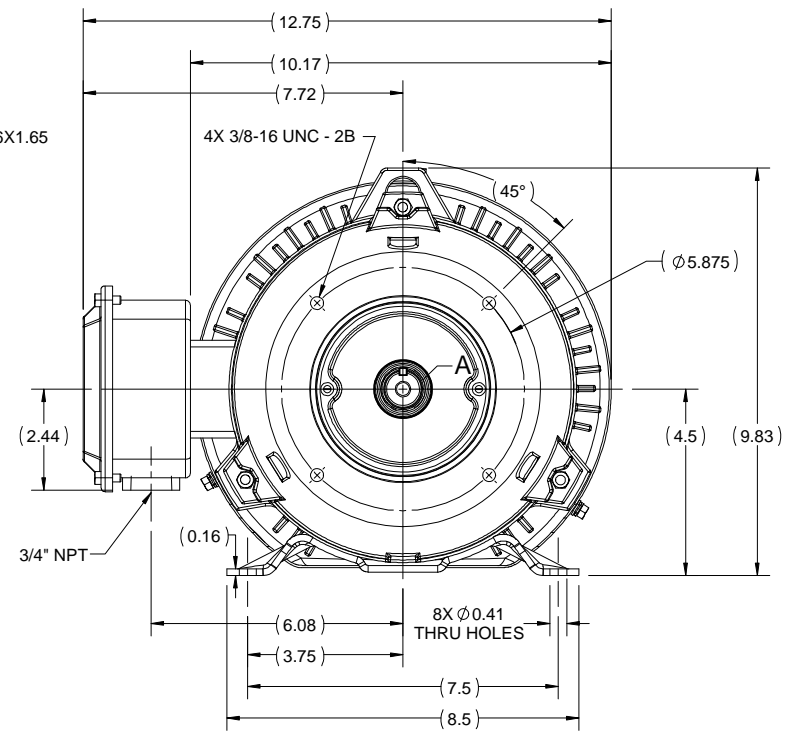
1

B

B



DETAIL A



A

A

182JP	20.44
184JP	21.44
FRAME	C


4

3

2

1

DRAWING REVISION B	REVISION BY VS	DATE 19/06/2018
ECO ECO-0147085	APPROVED BY SBD	DATE 19/06/2018
ECO DESCRIPTION DRAWING UPDATED COPYRIGHT REGAL BELOIT AMERICA, INC. ALL RIGHTS RESERVED. PROPRIETARY AND CONFIDENTIAL INFORMATION - THIS DOCUMENT IS THE PROPERTY OF REGAL BELOIT AMERICA, INC. (OWNER) AND CONTAINS OWNER'S PROPRIETARY INFORMATION. ANY PERSON, CORPORATION OR OTHER FIRM RECEIVING IT IS DEEMED, BY RECEIVING IT, TO AGREE THAT IT, AND/OR ANY PART OF IT, SHALL NOT BE DISCLOSED TO ANY PERSON, CORPORATION OR OTHER ENTITY, DUPLICATED, AND/OR USED, EXCEPT AS EXPRESSLY APPROVED IN WRITING IN ADVANCE BY OWNER. THIS DOCUMENT SHALL BE RETURNED TO OWNER UPON REQUEST. IT MAY BE SUBJECT TO CERTAIN RESTRICTIONS UNDER APPLICABLE EXPORT CONTROL LAWS AND REGULATIONS.		

DRAWN BY MSH	 Regal Beloit America, Inc.	
DATE 18/04/2018		
APPROVED BY SBD	DESCRIPTION OUTLINE 182/184JP FR TEFC RS	
DATE 18/04/2018		
REFERENCE	MATERIAL	PROCESS/FINISH
THIRD ANGLE PROJECTION	SIZE B	DRAWING NUMBER SS600203
		SHEET 1 OF 1



NO.	REVISION	BY & DATE	CHK	ANG	TOLERANCES UNLESS SPECIFIED		RFP	CAD FILE	SIZE	DRAWING NO.	PAGE	OF	REV.
					DEC.	INCHES							
5	CHG TO REGAL LOGO	SL 09/10/2015	AB		DEC.	INCHES							
4	REVISED IEC NOTATIONS	MSG 11/15/2011	CMN	.X		±.1							
3	ADDED IEC NOTATIONS... (U1), (V1) ETC. MU95194	MSG 5/10/2010	MJS	.XX		±.02							
2	ADDED THE OPTIONAL CORD CONNECTION MU46318	RDH 04/24/2003	DRS	.XXX		±.005							
1	REDRAWN	RM 11/20/1990		.XXXX		±.0005							
						±7'30"							
THIS DRAWING IN DESIGN AND DETAIL IS OUR PROPERTY AND MUST NOT BE USED EXCEPT IN CONNECTION WITH OUR WORK ALL RIGHTS OF DESIGN AND INVENTION ARE RESERVED THIS IS AN ELECTRONICALLY GENERATED DOCUMENT – DO NOT SCALE THIS PRINT								CAD FILE ee7308	A	EE7308			5


MARATHON ELECTRIC CORPORATION

TYPICAL PERFORMANCE CURVE for AC MOTOR

Customer

Curve at

460

Volts

 HP 1.5&1

 PHASE 3

 Model No 182TTFBD6085
60

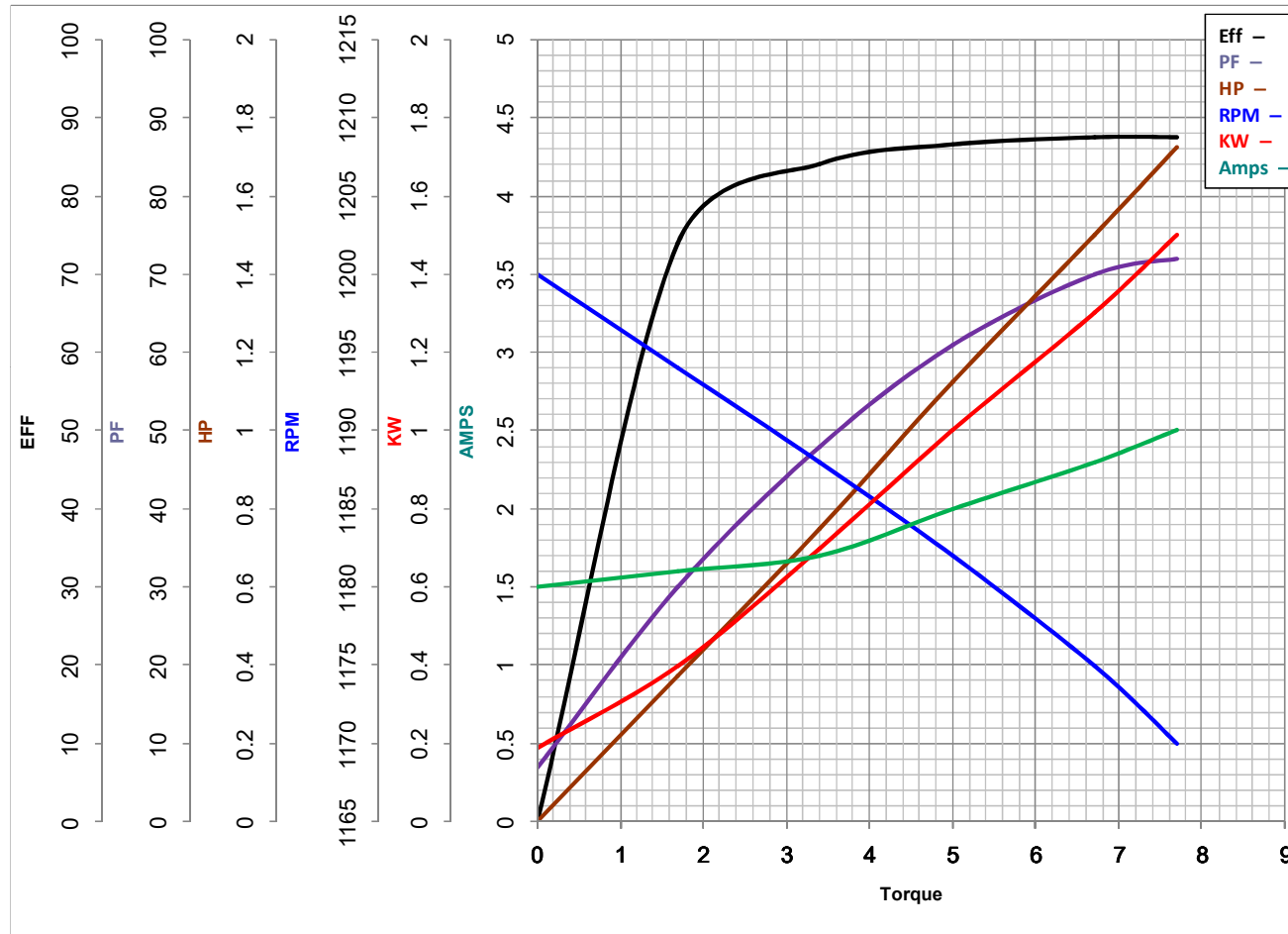
HZ

 VOLTS 230/460&190/380
1.5

HP

 Catalog No GT3405A

 HZ 60&50

 RPM 1175&980


Torque in Lb.Ft

 FL TORQUE 6.7 Lb.Ft

 BD TORQUE 25.0 Lb.Ft

 LR TORQUE 18.5 Lb.Ft

WINDING HE31126008-3

 FL AMPS 4.6/2.3

 PU TORQUE 15.0 Lb.Ft

 LR AMPS 18.5

Date 1/4/2019