

| | | |
|-----------------------|------------------------|-----------------|
| PROJECT: _____ | UNIT TAG: _____ | QUANTITY: _____ |
| REPRESENTATIVE: _____ | TYPE OF SERVICE: _____ | DATE: _____ |
| ENGINEER: _____ | SUBMITTED BY: _____ | DATE: _____ |
| CONTRACTOR: _____ | APPROVED BY: _____ | DATE: _____ |
| | ORDER NO.: _____ | DATE: _____ |

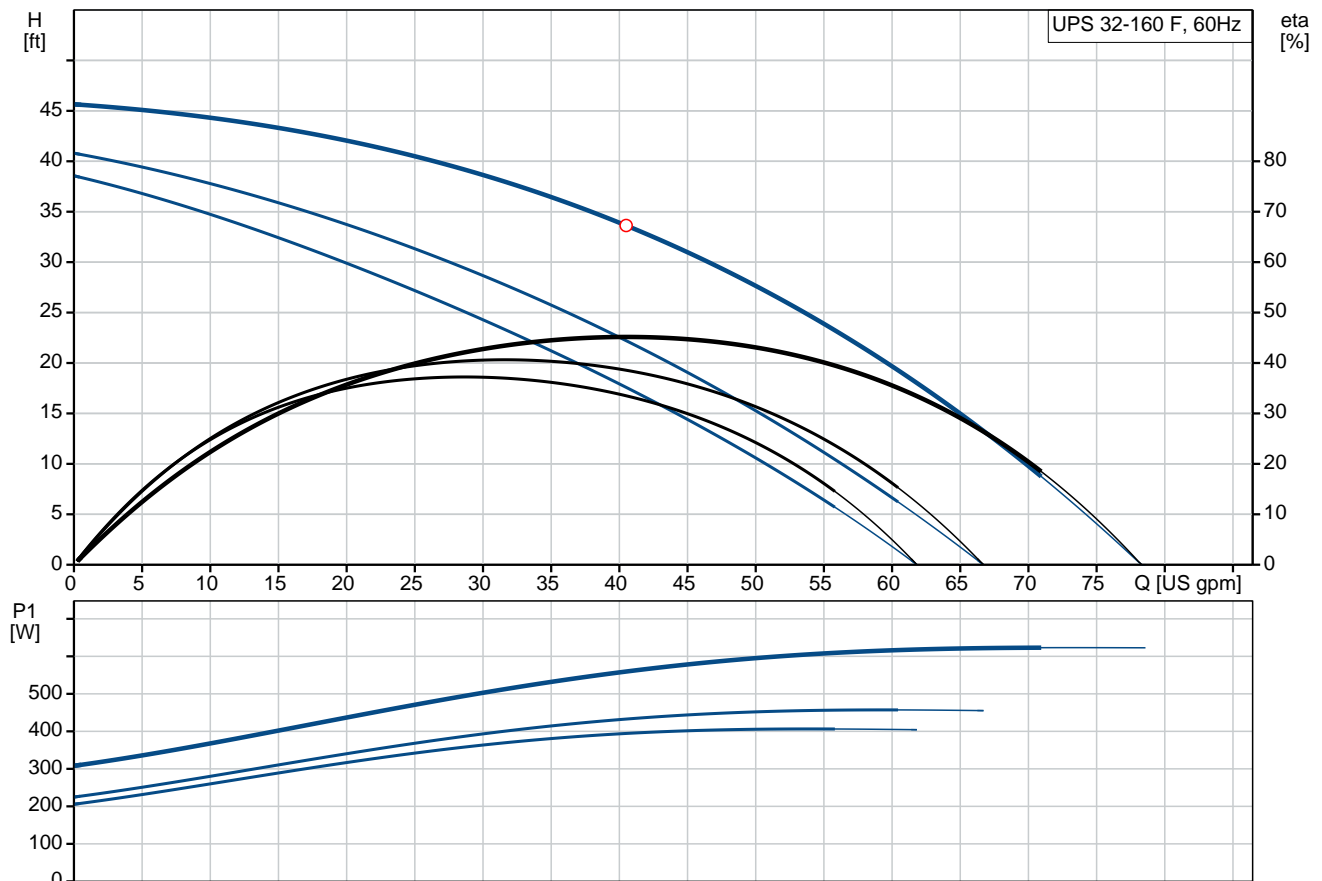


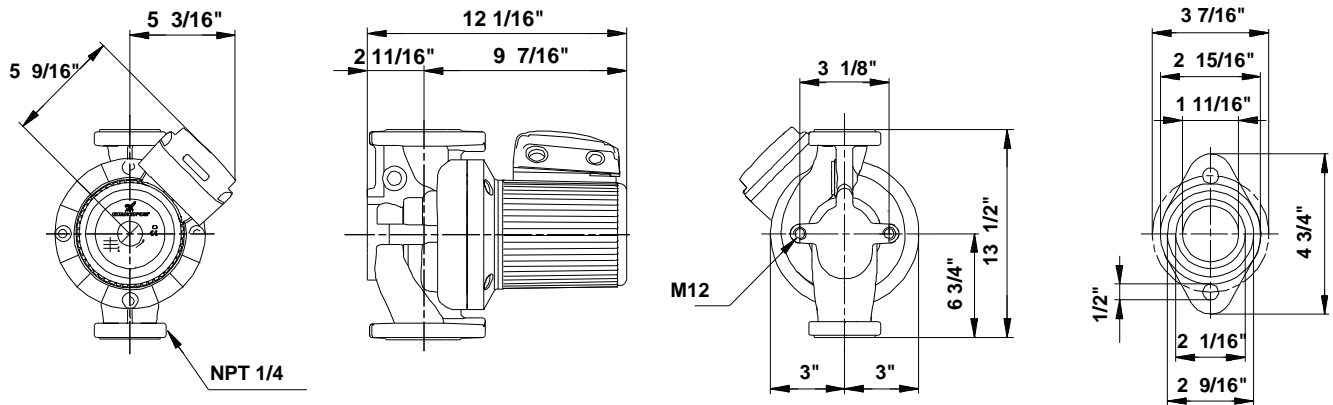
UPS 32-160 F

Circulator pumps

Product photo could vary from the actual product

| Conditions of Service | Pump Data | Motor Data |
|-------------------------|--|------------------------------|
| Flow: _____ | Maximum operating pressure: 145 psi | Max. power input: 600 W |
| Head: _____ | Liquid temperature range: 14 .. 248 °F | Rated voltage: 208-230 V |
| Efficiency: _____ | Maximum ambient temperature: 104 °F | Main frequency: 60 Hz |
| Liquid: Water | Approvals: CUL | Enclosure class: X4D |
| Temperature: 140 °F | Type of connection: F | Insulation class: F |
| NPSH required: ft | Flange standard: USA Oval | Motor protection: CONTACT |
| Viscosity: _____ | Pipe connection: GF 40/43 | Thermal protection: external |
| Specific Gravity: 0.985 | Product number: 96402736 | |





Materials:

Pump housing: Cast iron
EN-JL1040
ASTM 35 B - 40 B

Impeller: Stainless steel
DIN W.-Nr. 1.4301
AISI 304

Tender Text



Product photo could vary from the actual product

Product No.: [96402736](#)

UPS 32-160 F

The pump is of the canned rotor type, i.e. pump and motor form an integral unit without shaft seal and with only two gaskets for sealing. The bearings are lubricated by the pumped liquid.

In order to avoid problems in connection with disposal, great importance has been attached to using as few different materials as possible.

The pump is characterized by:

- * 3 speed motor.
- * Ceramic radial bearings.
- * Carbon axial bearing.
- * Stainless steel rotor can, bearing plate

and rotor cladding.

- * Aluminium alloy stator housing.
- * Cast iron pump housing.
- * Stator with built-in thermal switch.

The motor is a 3-phase motor.

The pump is supplied with a standard module in the terminal box.

The standard module is to be connected to the mains supply via external contactor.

Controls:

Relay: without relay

Liquid:

Pumped liquid: Water
Liquid temperature range: 14 .. 248 °F
Liquid temperature during operation: 140 °F
Density: 61.35 lb/ft³

Technical:

Approvals on nameplate: CUL

Materials:

Pump housing: Cast iron
EN-JL1040
ASTM 35 B - 40 B
Impeller: Stainless steel
DIN W.-Nr. 1.4301

AISI 304

Installation:


Range of ambient temperature: 32 .. 104 °F
Maximum operating pressure: 145 psi
Flange standard: USA Oval
Type of connection: F
Pipe connection: GF 40/43
Pressure stage: 145 psi
Port-to-port length: 13 1/2 in

Electrical data:

Power input in speed 1: 380 W
Power input in speed 2: 430 W
Max. power input: 600 W
Main frequency: 60 Hz
Rated voltage: 3 x 208-230 V
Current in speed 1: 1.12 A
Current in speed 2: 1.25 A
Current in speed 3: 1.96 A
Cos phi in speed 1: 0,85
Cos phi in speed 2: 0,86
Cos phi: 0,77
Enclosure class (IEC 34-5): X4D
Insulation class (IEC 85): F
Winding resistance: 26.0 - 34.0 ohm

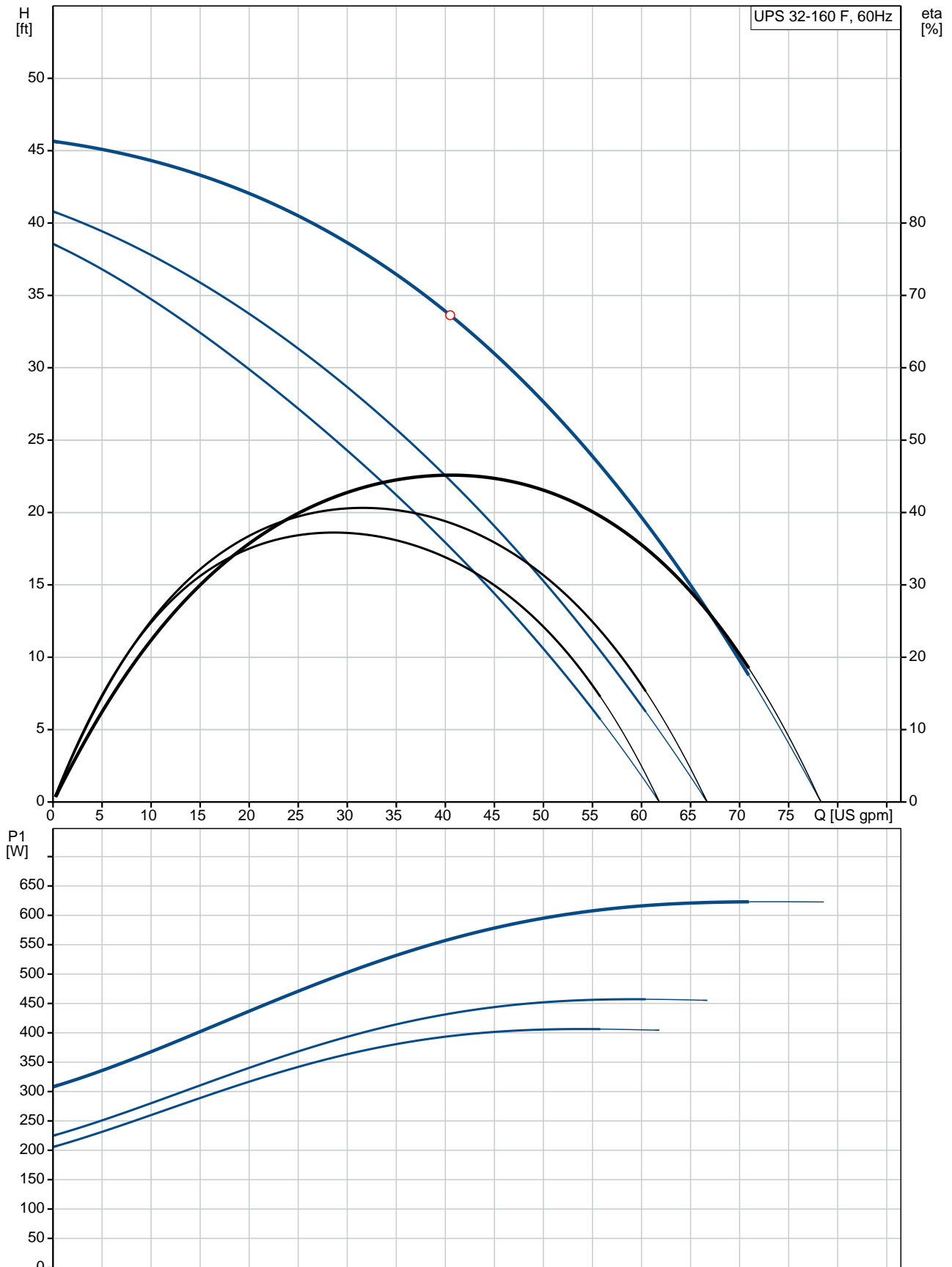
Others:

Net weight: 37.7 lb
Gross weight: 44.3 lb
Shipping volume: 2.08 ft³

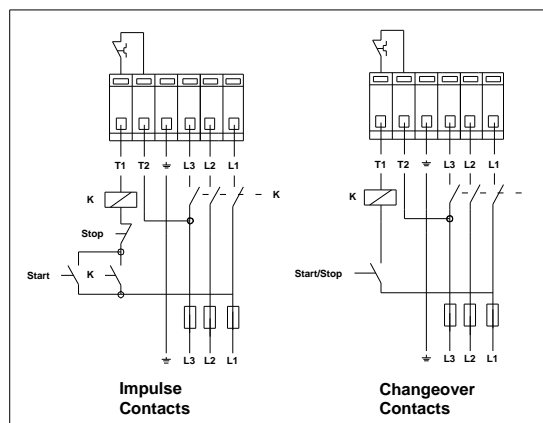
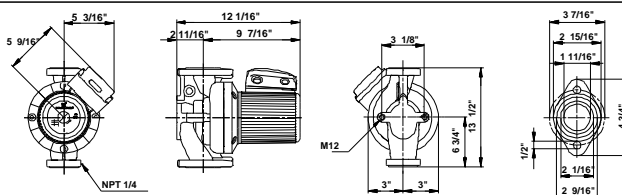
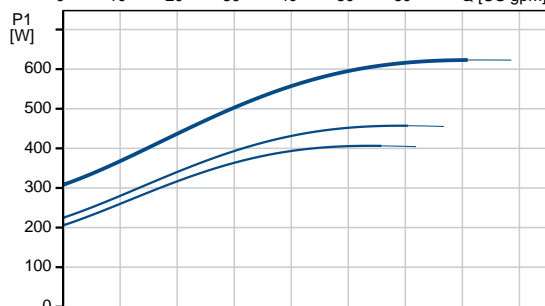
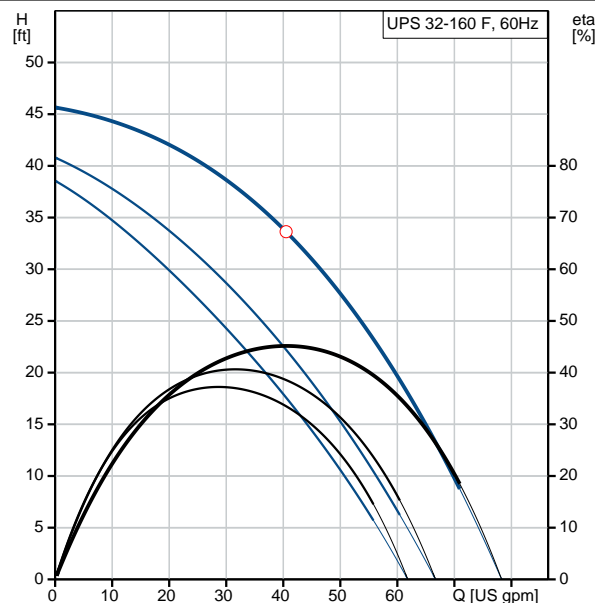
| Position | Count | Description |
|----------|-------|--|
| | 1 | <p>UPS 32-160 F</p>  <p>Product photo could vary from the actual product</p> <p>Product No.: 96402736</p> <p>The pump is of the canned rotor type, i.e. pump and motor form an integral unit without shaft seal and with only two gaskets for sealing. The bearings are lubricated by the pumped liquid.</p> <p>In order to avoid problems in connection with disposal, great importance has been attached to using as few different materials as possible.</p> <p>The pump is characterized by:</p> <ul style="list-style-type: none"> * 3 speed motor. * Ceramic radial bearings. * Carbon axial bearing. * Stainless steel rotor can, bearing plate and rotor cladding. * Aluminium alloy stator housing. * Cast iron pump housing. * Stator with built-in thermal switch. <p>The motor is a 3-phase motor.</p> <p>The pump is supplied with a standard module in the terminal box. The standard module is to be connected to the mains supply via external contactor.</p> <p>Controls:</p> <p>Relay: without relay</p> <p>Liquid:</p> <p>Pumped liquid: Water</p> <p>Liquid temperature range: 14 .. 248 °F</p> <p>Liquid temperature during operation: 140 °F</p> <p>Density: 61.35 lb/ft³</p> <p>Technical:</p> <p>Approvals on nameplate: CUL</p> <p>Materials:</p> <p>Pump housing: Cast iron EN-JL1040 ASTM 35 B - 40 B</p> <p>Impeller: Stainless steel DIN W.-Nr. 1.4301 AISI 304</p> |

| Position | Count | Description |
|----------|-------|---|
| | | <p>Installation:</p> <p>Range of ambient temperature: 32 .. 104 °F</p> <p>Maximum operating pressure: 145 psi</p> <p>Flange standard: USA Oval</p> <p>Type of connection: F</p> <p>Pipe connection: GF 40/43</p> <p>Pressure stage: 145 psi</p> <p>Port-to-port length: 13 1/2 in</p> <p>Electrical data:</p> <p>Power input in speed 1: 380 W</p> <p>Power input in speed 2: 430 W</p> <p>Max. power input: 600 W</p> <p>Main frequency: 60 Hz</p> <p>Rated voltage: 3 x 208-230 V</p> <p>Current in speed 1: 1.12 A</p> <p>Current in speed 2: 1.25 A</p> <p>Current in speed 3: 1.96 A</p> <p>Cos phi in speed 1: 0,85</p> <p>Cos phi in speed 2: 0,86</p> <p>Cos phi: 0,77</p> <p>Enclosure class (IEC 34-5): X4D</p> <p>Insulation class (IEC 85): F</p> <p>Winding resistance: 26.0 - 34.0 ohm</p> <p>Others:</p> <p>Net weight: 37.7 lb</p> <p>Gross weight: 44.3 lb</p> <p>Shipping volume: 2.08 ft³</p> |

96402736 UPS 32-160 F 60 Hz



| Description | Value |
|--------------------------------------|--------------------------|
| General information: | |
| Product name: | UPS 32-160 F |
| Product No.: | 96402736 |
| EAN: | 5700390679507 |
| Technical: | |
| Speed Number: | 3 |
| Head max: | 52.5 ft |
| Approvals on nameplate: | CUL |
| Model: | C |
| Materials: | |
| Pump housing: | Cast iron |
| | EN-JL1040 |
| | ASTM 35 B - 40 B |
| Impeller: | Stainless steel |
| | DIN W.-Nr. 1.4301 |
| | AISI 304 |
| Installation: | |
| Range of ambient temperature: | 32 .. 104 °F |
| Maximum operating pressure: | 145 psi |
| Flange standard: | USA Oval |
| Type of connection: | F |
| Pipe connection: | GF 40/43 |
| Pressure stage: | 145 psi |
| Port-to-port length: | 13 1/2 in |
| Liquid: | |
| Pumped liquid: | Water |
| Liquid temperature range: | 14 .. 248 °F |
| Liquid temperature during operation: | 140 °F |
| Density: | 61.35 lb/ft ³ |
| Electrical data: | |
| Power input in speed 1: | 380 W |
| Power input in speed 2: | 430 W |
| Max. power input: | 600 W |
| Main frequency: | 60 Hz |
| Rated voltage: | 3 x 208-230 V |
| Current in speed 1: | 1.12 A |
| Current in speed 2: | 1.25 A |
| Current in speed 3: | 1.96 A |
| Cos phi in speed 1: | 0,85 |
| Cos phi in speed 2: | 0,86 |
| Cos phi: | 0,77 |
| Enclosure class (IEC 34-5): | X4D |
| Insulation class (IEC 85): | F |
| Motor protection: | CONTACT |
| Thermal protec: | external |
| Winding resistance: | 26.0 - 34.0 ohm |
| Controls: | |
| Relay: | without relay |
| Pos term box: | 1.30H |
| Others: | |
| Net weight: | 37.7 lb |
| Gross weight: | 44.3 lb |





Company name:

Created by:

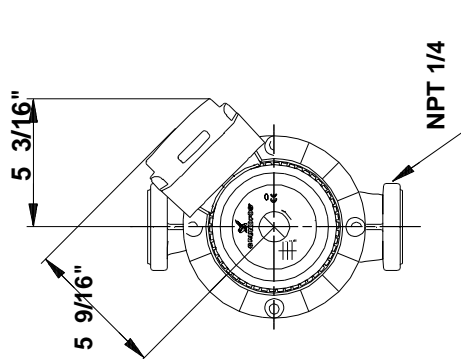
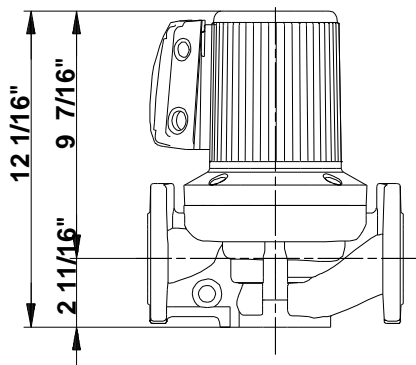
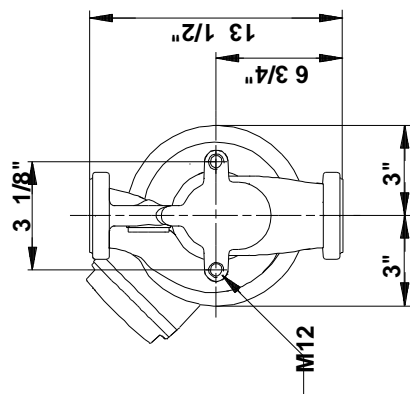
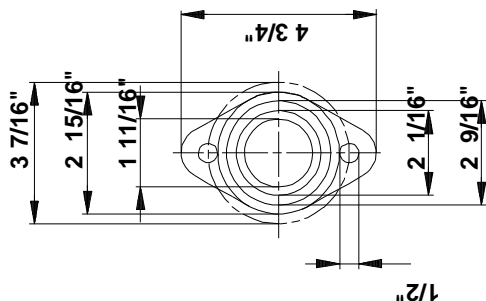
Phone:

Date:

2/21/2018

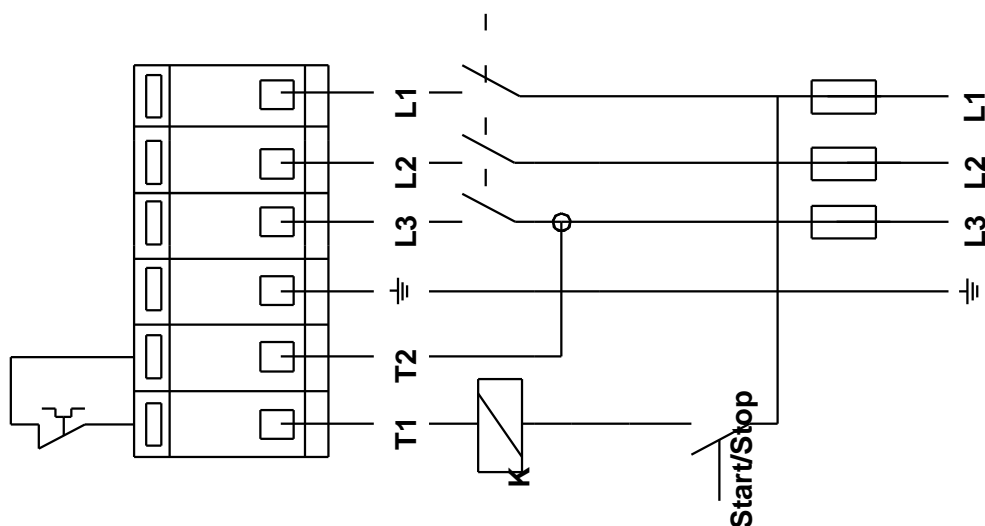
| Description | Value |
|------------------|----------|
| Shipping volume: | 2.08 ft³ |
| Sales region: | Namreg |

96402736 UPS 32-160 F 60 Hz

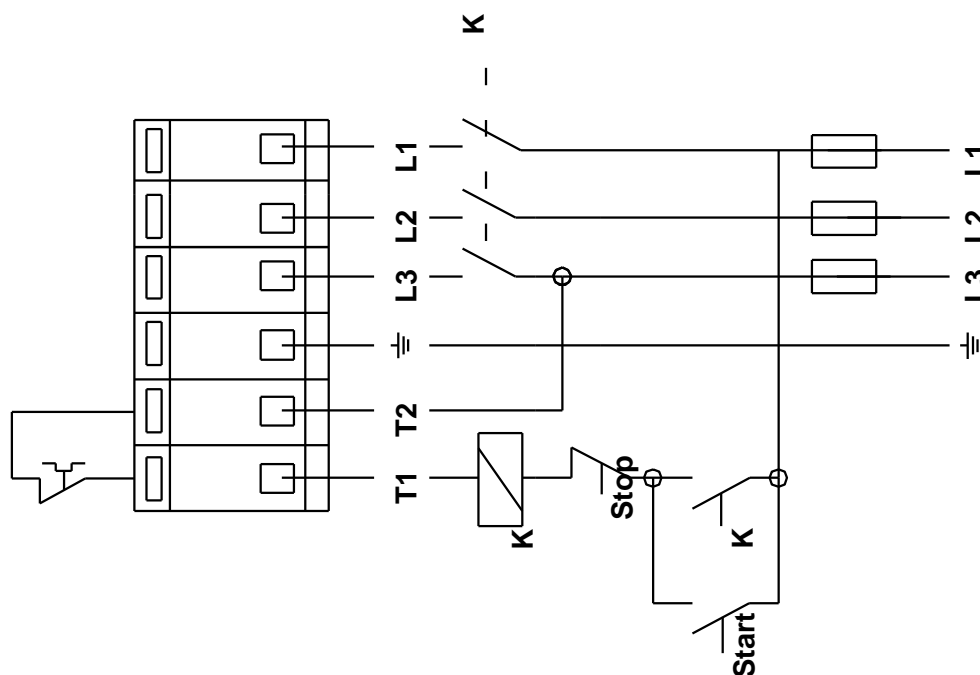


Note! All units are in [mm] unless otherwise stated.
Disclaimer: This simplified dimensional drawing does not show all details.

96402736 UPS 32-160 F 60 Hz



**Changeover
Contacts**



**Impulse
Contacts**



Company name:

Created by:

Phone:

Date:

2/21/2018

Order Data:

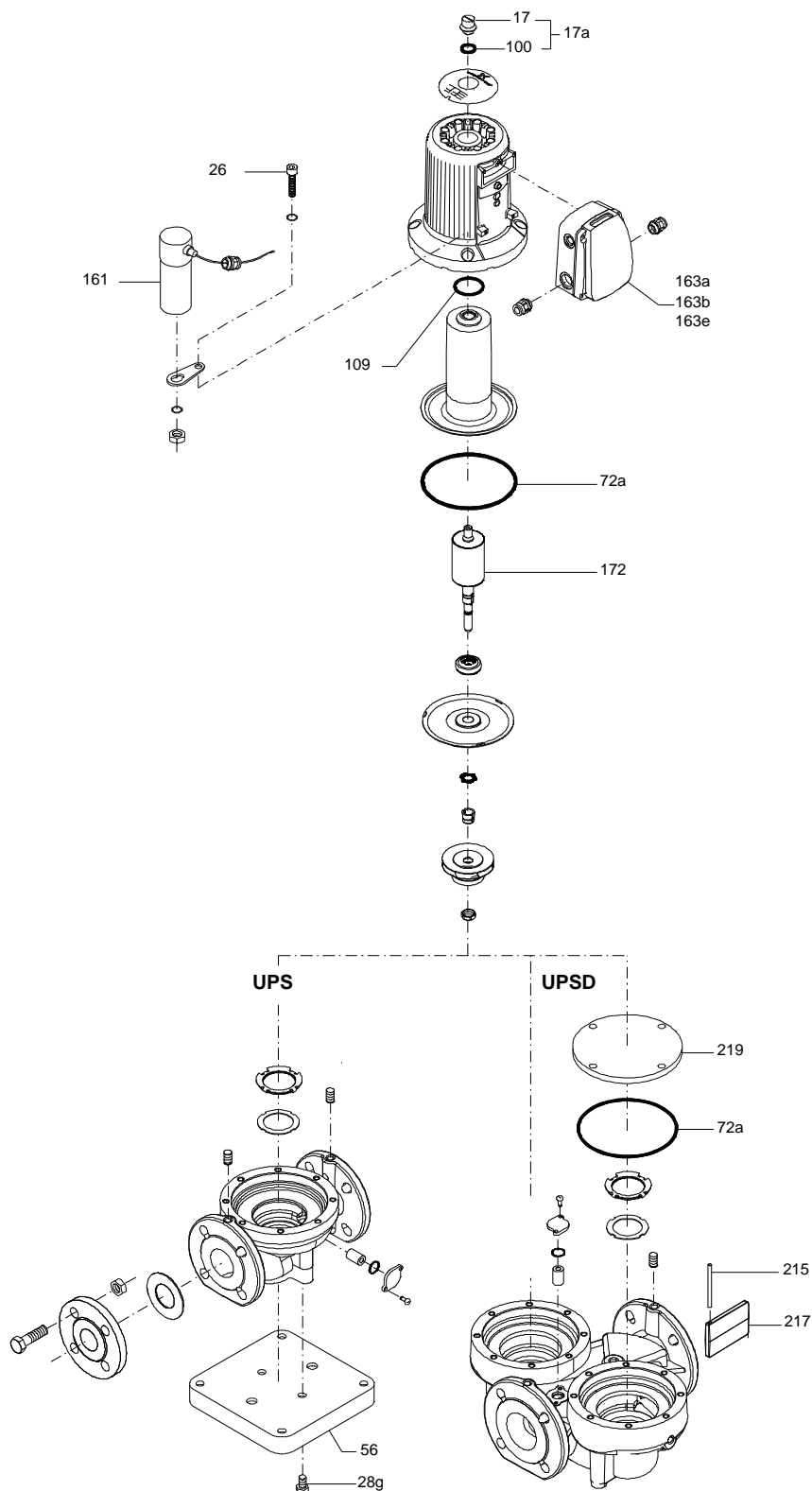
Product name: UPS 32-160 F

Amount: 1

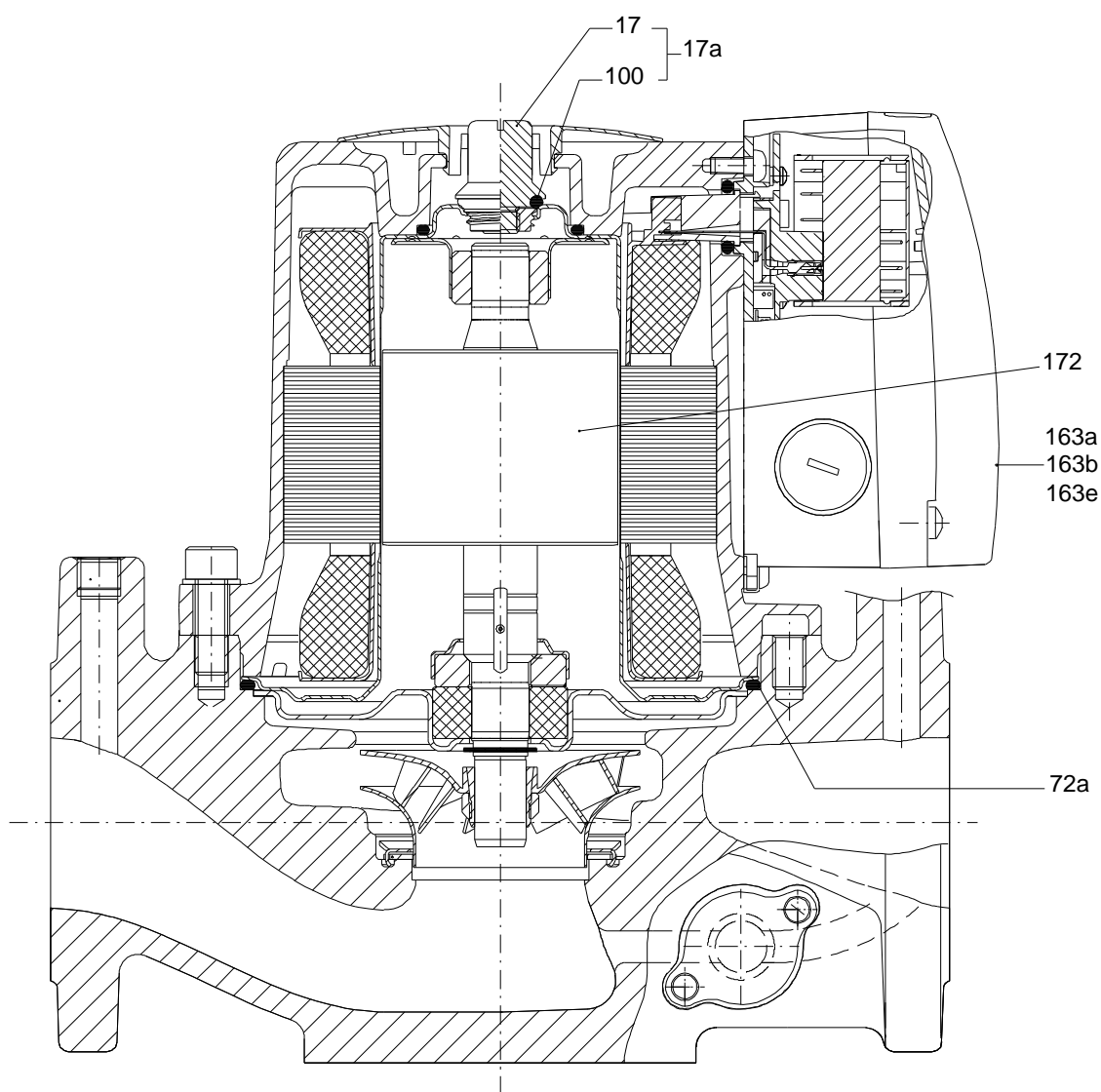
Product No.: 96402736

Total: Price on request

Exploded view (TM010410 3905)



Sectional drawing (TM010371 3905)





Company name:

Created by:

Phone:

Date:

2/21/2018

Parts list UPS 32-160 F, Prod number 96402736

Valid from 1.4.1995 (9513)

| Position | Description | Annotation | Classification data | Part No. | Count | Unit |
|----------|-------------------|------------|-----------------------------------|----------|-------|------|
| 163a | Terminal box cpl. | | Designation: WITH RELAY MODULE | | 1 | pcs |
| 163b | Terminal box cpl. | | Designation: WITH STANDARD MODULE | | 1 | pcs |
| 163e | Terminal box cpl. | | Designation: W. PROTECTION MODULE | | 1 | pcs |