

# PRODUCT INFORMATION PACKET

Model No: 056T17F15664  
Catalog No: G564A  
1 1/2, 1800, TEFC, 56C, 3/60/230/460  
Totally Enclosed Fan Cooled (TEFC)



Regal and Marathon are trademarks of Regal Beloit Corporation or one of its affiliated companies.  
©2018 Regal Beloit Corporation, All Rights Reserved. MC017097E





### Nameplate Specifications

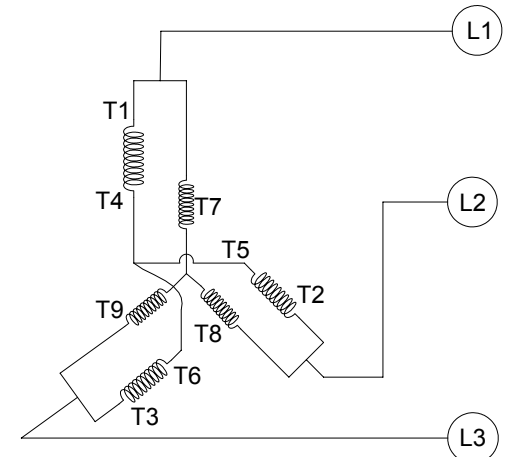
Output HP	1.5 Hp	Output KW	1.12 kW
Frequency	60 Hz	Voltage	208-230/460 V
Current	4.7-4.6/2.3 A	Speed	1725 rpm
Service Factor	1.25	Phase	3
Efficiency	86.5 %	Duty	CONTINUOUS
Insulation Class	B	Design Code	A
KVA Code	P	Frame	56C
Enclosure	TEFC	Overload Protector	NOT
Ambient Temperature	40 °C	Drive End Bearing Size	6205
Opp Drive End Bearing Size	6203	UL	Recognized
CSA	Y	CE	Y
IP Code	43		

### Technical Specifications

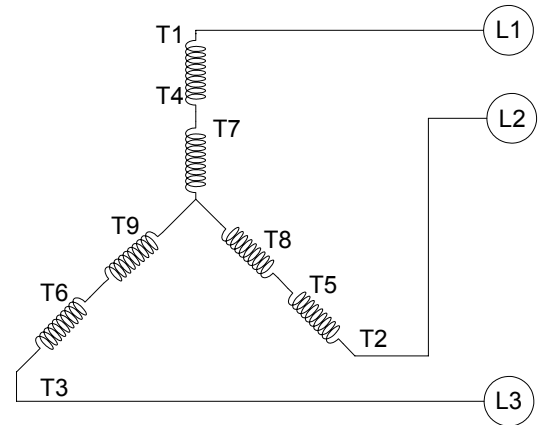
Electrical Type	SQ CAGE IND RUN	Starting Method	ACROSS THE LINE
Poles	4	Rotation	REV
Mounting	RIGID	Motor Orientation	HORIZONTAL
Drive End Bearing	BALL	Opp Drive End Bearing	BALL
Frame Material	ROLLED STEEL	Shaft Type	T
Overall Length	14.65 in	Frame Length	8.65 in
Shaft Diameter	0.63 in	Shaft Extension	1.88 in
Assembly/Box Mounting	F1 ONLY		
Outline Drawing	OL56100098-001	Connection Diagram	CDTD103

This is an uncontrolled document once printed or downloaded and is subject to change without notice. Date Created: 04/06/2018

CCW LOW VOLTAGE



CCW HIGH VOLTAGE



VIEW OF TERMINAL END

- NOTE:
1. TO REVERSE ROTATION, INTERCHANGE ANY TWO LINE CONNECTIONS TO L1, L2, OR L3.
  2. CONNECTION DIAGRAM-NAMEPLATE DD10038

DRAWING REVISION A	REVISION BY G. RODRIGUEZ	DATE 07-06-2016
ECO	APPROVED BY R. VALENZUELA	DATE 07-06-2016
ECO DESCRIPTION		
<small>COPYRIGHT REGAL BELOIT AMERICA, INC. ALL RIGHTS RESERVED.                  PROPRIETARY AND CONFIDENTIAL INFORMATION - THIS DOCUMENT IS THE PROPERTY OF                  REGAL BELOIT AMERICA, INC. (OWNER) AND CONTAINS OWNER'S PROPRIETARY                  INFORMATION. ANY PERSON, CORPORATION OR OTHER FIRM RECEIVING IT IS DEEMED,                  BY RECEIVING IT, TO AGREE THAT IT, AND/OR ANY PART OF IT, SHALL NOT BE DISCLOSED                  TO ANY PERSON, CORPORATION OR OTHER ENTITY, DUPLICATED, AND/OR USED, EXCEPT                  AS EXPRESSLY APPROVED IN WRITING IN ADVANCE BY OWNER. THIS DOCUMENT SHALL                  BE RETURNED TO OWNER UPON REQUEST. IT MAY BE SUBJECT TO CERTAIN                  RESTRICTIONS UNDER APPLICABLE EXPORT CONTROL LAWS AND REGULATIONS.</small>		

TOLERANCES UNLESS OTHERWISE SPECIFIED:		
DEC.	INCH	mm
.X	+0.1	[±2.5]
.XX	+0.01	[±0.25]
.XXX	+0.005	[±0.127]
.XXXX	+0.0005	[±0.0127]
REMOVE BURRS & BREAK SHARP		
EDGES: .003/.015 [.076/.381]		
CORNER FILLETS: .02 [.51]		
MACHINED SURFACES: 125/3.2		
mm SHOWN IN [BRACKETS]		

DRAWN BY G. RODRIGUEZ	DATE 07-06-2016
APPROVED BY R. VALENZUELA	DATE 07-06-2016
REFERENCE SKT52A105383CA	MATERIAL
THIRD ANGLE PROJECTION	PROCESS/FINISH

<b>REGAL</b> ™ Regal Beloit America, Inc.	
DESCRIPTION <b>CONN DIAGRAM-EXTERNAL</b>	
SIZE B	DRAWING NUMBER <b>CDTD103</b>
SHEET 1 OF 1	

**CERTIFICATION DATA SHEET**

**Model#:** 56T17F15664 A **WINDING#:** ZT4256 FR 3  
**CONN. DIAGRAM:** CDTD103 **ASSEMBLY:** F1 ONLY  
**OUTLINE:** OL56100098-001

**TYPICAL MOTOR PERFORMANCE DATA**

HP	KW	SYNC. RPM	F.L. RPM	FRAME	ENCLOSURE	KVA CODE	DESIGN
1 1/2&1	1.12&.75	1800	1725&1425	56C	TEFC	P	A

PH	Hz	VOLTS	FL AMPS	START TYPE	DUTY	INSL	S.F	AMB°C	ELEVATION
3	60/50	208- 230/460#190/ 380	4.7- 4.6/2.3&4.2/2. 1	ACROSS THE LINE	CONTINUOU S	B3	1.25/1.15	40	3300

FULL LOAD EFF: 86.5&.85	3/4 LOAD EFF: 85.5	1/2 LOAD EFF: 82.5	GTD. EFF	ELEC. TYPE	NO LOAD AMPS
FULL LOAD PF: 71&.64	3/4 LOAD PF: 62.5	1/2 LOAD PF: 49	84	SQ CAGE IND RUN	3 / 1.5

F.L. TORQUE	LOCKED ROTOR AMPS	L.R. TORQUE	B.D. TORQUE	F.L. RISE°C
4.5 LB-FT	48 / 24	21.2 LB-FT 471	26 LB-FT 578	35

SOUND PRESSURE @ 3 FT.	SOUND POWER	ROTOR WK^2	MAX. WK^2	SAFE STALL TIME	STARTS /HOUR	APPROX. MOTOR WGT
62 dBA	72 dBA	0.14 LB-FT^2	10 LB-FT^2	20 SEC.	2	50 LBS.

**\*\*\* SUPPLEMENTAL INFORMATION \*\*\***

DE BRACKET TYPE	ODE BRACKET TYPE	MOUNT TYPE	ORIENTATION	SEVERE DUTY	HAZARDOUS LOCATION	DRIP COVER	SCREENS	PAINT
C-FACE	BRAKE	RIGID	HORIZONTAL	FALSE	NONE	FALSE	NONE	GRAY (POWDER)

BEARINGS		GREASE	SHAFT TYPE	SPECIAL DE	SPECIAL ODE	SHAFT MATERIAL	FRAME MATERIAL
DE	OPE						
BALL 6205	BALL 6203	POLYREX EM	T	NONE	NONE	AISI 1215 (MS1000)	ROLLED STEEL

THERMO-PROTECTORS				THERMISTORS	CONTROL	SPACE /n HEATERS
THERMOSTATS	PROTECTORS	WDG RTDs	BRG RTDs			
NONE	NOT	NONE	NONE	NONE	FALSE	NONE VOLTS

If Inverter equals NONE, contact factory for further information

INVERTER TORQUE: NONE	
INV. HP SPEED RANGE: NONE	
ENCODER: NONE	
NONE NONE	
NONE NONE PPR	
BRAKE: PROVISIONS FOR KIT	NONE
NONE P/N	NONE
NONE NONE	
NONE FT-LB	NONE V NONE Hz

\*  
N  
O  
T  
E  
S  
\*

DATE: 06/28/2017 07:18:32 AM  
 FORM 3531 REV.3 02/07/99

\*\* Subject to change without notice.