



Safety Solution Manufacturers

2015 PRODUCT CATALOG

WORKZONE • INDUSTRIAL • HIGHWAY • JAN-SAN • COMMERCIAL • PRODUCT GUIDE



CONTENTS

A-FRAME BARRIER SYSTEMS.....	12-13
BANNERS	49
BARGARD COVERS.....	53
BARRICADE SYSTEMS	19
BARRICADE LIGHTS	20-21
CHANNELIZER CONES	26
CHANNELIZER DRUM	27
CONES SIGNS	35-36
DELINEATOR POSTS.....	22-24
FENCING	47
FLEET SAFETY KITS	3-4
FUSEE KITS AND HOLDERS.....	5
GRIP N GO TRAILBLAZER.....	25
I-BEAMS AND T-BOARDS	14-15
LAMBA CONES & FLOOR STANDS	28-29
M-CADES	8-9
N-CADE SYSTEMS	16
PACK N POP CONES	30
PARKING BLOCKS	50
PENNANTS	48
PLASTX BARRICADES.....	6-7
QUICK DEPLOY BATONS	46
REFLECTIVE PRODUCTS.....	49
ROLL UP SIGNS	40-43
SIGN LEGENDS	17-18
SIGN STANDS	44-45
SPEED BUMPS	51
SPORT / COLORED CONES	37
STEELCADES	10
STOP / SLOW PADDLES	38-39
TRAFFIC CONES	31-32
TRAFFIC CONE ACCESSORIES.....	33-34
TRIANGLE WARNING KITS	1-2
WARNING FLAGS.....	48
WARNING LIGHTS	51-52
WHEEL CHOCKS	50
WINDSOCKS	48



Safety Solutions.

WORKZONE // INDUSTRIAL

HIGHWAY // JAN-SAN // HEAVY DUTY TRUCK

It's what we've been doing since 1969.

At Cortina, we have been a leader in manufacturing the highest quality products serving a broad range of applications and industries.

We're your one source for the most complete line of workplace safety products designed to meet a wide variety of application requirements. We set the standard for superior performance and reliability with high-quality products from – Rebar Bargards, Sign Stands, Floor Signs, Fleet kits and traffic control products.

Choosing the right product is easier as this catalog is intended as a resource in helping to identify and select the right products for you application. Please contact our trained and professional inside sales associates for questions regarding product applications or customization.

Count on Cortina – your trusted source for the broadest line of safety products designed to advance workplace safety and compliance.

Cortina 
Safety Products

www.cortinaco.com



WARNING KITS

The Cortina Triangle Reflector Warning Kits meet or exceed all DOT FMVSS125 requirements, thus ensuring that your fleet and the motoring public have the finest product available. The triangle's wire form support guarantees tilt compliance of 40 mph wind test. Opaque container protects fluorescent color from UV deterioration. The unique living hinge box, wire support, and tabs are available ONLY by Cortina. The living hinge box ensures that the lid won't separate from the box. A heavier weighted base ensures that triangles won't move by wind gusts caused by passing traffic. Furthermore, it guarantees compliance to Federal Specifications. Cortina Triangle Reflector Warning Kits meet and exceed all DOT standards and requirements of FMVSS 125 Safety Standards. The unique One-Piece living hinge box allows for thousands of openings and closings and eliminates all hinge problems that the industry has faced for years.



219 KIT
95-03-009

INTERIOR STRIPS OF MOLDED
FLUORESCENT PLASTIC
PROVIDE EFFECTIVE WARNING
FOR DAYTIME USE



THREE FRONT LIVING
HINGE CLOSURES

LIVING HINGE, ONE-PIECE BOX

WIRE BRACING ENSURES COMPLIANCE
OF 40MPH WIND TEST



ACRYLIC PLASTIC STRIP
REFLECTORS, HERMETICALLY
SEALED AND IMPERVIOUS
TO DUST AND MOISTURE,
UNFOLDS TO A TRIANGULAR
SHAPE AND ARE HELD FIRMLY
IN PLACE WITH A STURDY
LOCKING DEVICE

EASY TO ERECT, SINGLE TRIANGLE
FLARE UNFOLDS FROM A WEIGHTED
BLOW-MOLDED TUBE THAT SERVES
AS A BASE AND IS EQUIPPED WITH
NON-SLIP FOAM PADS.



B
AUTO KIT
95-02-002-01

A BOXES

Mfr. No.	Product Description
13-01-005-01	SCHOOL BUS TRIANGLE BOX
13-01-005-02	LIVING HINGE 219 BOX
13-01-005-05	PLASTIC CASE WITH HANDLE FOR 3 TRIANGLES
13-01-009	PLASTIC CASE FOR 1 TRIANGLE
13-01-013	PLASTIC CASE FOR 2 TRIANGLES

B AUTO KIT

Mfr. No.	Product Description
95-02-001	SINGLE (1) TRIANGLE FLARE

C 319 KIT

Mfr. No.	Product Description
95-02-002-01	ONE (1) TRIANGLE IN PLASTIC BOX*
95-02-002-02	TWO (2) TRIANGLES IN PLASTIC BOX



D
219 KIT
95-02-002-03

D 219 KIT

Mfr. No.	Product Description
95-02-002-03	THREE (3) TRIANGLES IN PLASTIC BOX WITH HANDLE
95-03-009	THREE (3) TRIANGLES IN LIVING HINGE BOX-1 PK.*
95-03-010	THREE (3) TRIANGLES IN LIVING HINGE BOX-4 PK.*



E DISTRESS ALERT TRIANGLES

*Using the same technology found in truck triangles, the patented Distress Alert provides a quick, efficient and inexpensive tool to inform other motorists of your presence on the roadway. Our unique, patented window hook allows the triangle to mount on any car window in the universally recognized upright position. No tools required! Simply unfold and hang on your window. **DON'T GET ON THE ROAD WITHOUT ONE!***

Mfr. No.	Product Description
95-2000-1	DISTRESS ALERT WINDOW TRIANGLE RETAIL WRAPPED
95-2000-B	DISTRESS ALERT WINDOW TRIANGLE BULK*

* HIGH MOVING ITEM

SAFETY KITS

Cortina's metal and plastic case fleet kits offer a single kit to meet CFR49 requirements, eliminate clutter in the vehicle, and offer additional storage space. The high-quality, powder-coated box ensures years of use. Fleet Safety kits may contain the following: three triangle reflectors, one fire extinguisher, three 20 minute fusees or three 20 minute lightsticks. One hold down strap and brackets included inside one heavy-duty, steel carrying case. The best value custom safety kit contains the following: three triangle warning flares, one fire extinguisher, three 20 minute fusees and one heavy-duty plastic carrying case with handle.



A
SCHOOL BUS KIT
95-03-006
PLASTIC CASE

A SCHOOL BUS KITS

Haz Mat shipping regulations. Order in multiples of 25.

Mfr. No.	Product Description
95-03-006	SCHOOL BUS TRI KIT WITH 6 20MIN. FUSEES
95-03-007	SCHOOL BUS TRI KIT WITH 6 30MIN. FUSEES

B 229 KITS

Haz Mat shipping regulations.

Mfr. No.	Product Description
03-229-3420	METAL CASE FOR SAFETY KIT
95-04-001-02	FLEET SAFETY KIT WITH LIGHTSTICKS
95-04-002	FLEET SAFETY KIT W/O FIRE EXTINGUISHER
95-04-004	FLEET SAFETY KIT 2.5 LB FIRE EXTINGUISHER-REFILLABLE*

B
229 KIT
95-04-004

C SIX-PACK FLARE KITS

For the automotive aftermarket and heavy duty markets, these kits offer for the first time ever a 6-pack configuration of flares. Contains six flares, bright orange safety vest for flare deployment, and storage case with flare pockets and vest holder. Double zipped 600 denier polyester bag keeps flares together; velcro on back of bag secures placement in trunk or under seat. New packaging graphics attracts customers. More flares and longer burning flares means customer will be prepared for a true emergency. Standard shipping.

Mfr. No.	Product Description
95-07-25G	20 MINUTE FLARE SIX PACK
95-07-35G	30 MINUTE FLARE SIX PACK

C
SIX-PACK FLARE
KITS
95-07-25G
95-07-35G



D MOTORIST SAFETY KIT

This kit, which fits conveniently under most seats contains: Two 30 minute lightsticks, One warning triangle, One reflective safety vest, One bright orange bag to hold contents with custom silk screening available at an upcharge.

Mfr. No.	Product Description
95-06-03	MOTORIST SAFETY KIT*

* HIGH MOVING ITEM

D
MOTORIST SAFETY KIT
95-06-03



FUSEE KITS & HOLDERS

A FUSEE KITS

Heavy duty, injection-molded, plastic boxes hold four or twelve 20 minute, moisture resistant fusee. Compact design for tight storage space. Haz Mat shipping regulations.

Mfr. No.	Product Description
95-07-001	SAFETY FUSEE KIT-4 UNITS
95-07-002	SAFETY FUSEE KIT-12 UNITS



B FUSEE HOLDERS

Heavy duty Emergency Fusee holders are designed to hold 20 or 30 minute fusee. Holders are constructed from heavy Duty Polypropylene, with a handle and no-roll design.

Mfr. No.	Product Description
95-07-003	FUSEE HOLDER CASE 12/20 MIN.*
95-07-004	FUSEE HOLDER CASE 12/30 MIN.*

C FUSEES

Safety fusees available in 20 and 30 minute types. Moisture resistant fusees are available with either a spike, non-spike, or a wire stand. Haz Mat shipping regulations.

Mfr. No.	Product Description
95-07-20	20 MINUTE FUSEE SPIKE TYPE
95-07-21	20 MINUTE FUSEE W/O SPIKE
95-07-22	20 MINUTE FUSEE W/WIRE STAND
95-07-30	30 MINUTE FUSEE SPIKE TYPE
95-07-31	30 MINUTE FUSEE W/O SPIKE
95-07-32	30 MINUTE FUSEE W/WIRE STAND

* HIGH MOVING ITEM



PLASTX BARRICADES

Offering many industry-only features such as: a recessed light bracket to protect light from impact. Recessed and replaceable sheeted panels providing flexibility and savings. Designed for easy nesting and stacking. Plastx Barricades are 100% Recyclable. All barricades are NCHRP-350 certified and meet MUTCD specifications. Custom imprinting available.

NEW & IMPROVED!
PANEL
MOUNTING CLIPS

REPLACEABLE PANELS AVAILABLE
IN ENGINEERING OR HI-INTENSITY
SHEETING. FACILITATE RECYCLING

RECESSED LIGHT BRACKET
PROVIDES ADDED SECURITY
AND IS EASY TO MOUNT

RECESSED PANEL AREA
PROVIDES SHEETING
PROTECTION FROM
SCRATCHING

45"

COMPANY ID HERE

IN-MOLD OR
STENCILING
IDENTIFICATION
AVAILABLE

SUPERIOR HIGH-STRENGTH RESIN
WITHSTANDS TEMPERATURE
EXTREMES AND HAS A UV PROTECTION
PACKAGE FOR YEAR-ROUND USE.

24"

A UNSHEETED PLASTIC BARRICADES

Mfr. No.	Product Description	Specifications
13-01-010**	PLASTX BARRICADE TYPE I	12T/4B NO SHEETING
13-01-010-01**	PLASTX BARRICADE TYPE II	8T/8B NO SHEETING
13-01-010-02**	PLASTX BARRICADE TYPE 84	8T/4B NO SHEETING
13-01-010-03**	PLASTX BARRICADE TYPE BARR. ELIM.	12T/8B NO SHEETING



B
TYPE I
97-01-001

B TYPE I BARRICADES

Mfr. No.	Product Description	Specifications
97-01-001**	PLASTX TYPE I BARRICADE	12T/4B EGR. SHEETING*
97-01-001-01**	PLASTX TYPE I BARRICADE	12T/4B H.I. SHEETING
97-01-002-05**	PLASTX TYPE I BARRICADE	8T/8B EGR SHEETING TOP ONLY
97-01-001-11**	PLASTX TYPE I BARRICADE	PRISMATIC FLUOR. ORANGE W/ DIRECT ARROW 12/4



D
TYPE II
BARRICADES
97-01-002

C ECONO 84F

Mfr. No.	Product Description	Specifications
97-01-001-05**	PLASTX TYPE 84F BARRICADE	8T/4B EGR. SHEETING
97-01-001-06**	PLASTX TYPE 84F BARRICADE	8T/4B H.I. SHEETING

D TYPE II BARRICADES

Mfr. No.	Product Description	Specifications
97-01-002**	PLASTX TYPE II BARRICADE	8T/8B EGR. SHEETING*
97-01-002-01**	PLASTX TYPE II BARRICADE	8T/8B H.I. SHEETING*
97-01-002-02	PLASTX TYPE II BARRICADE	8T/4B H.I. SHEETING
97-01-002-03	PLASTX TYPE II BARRICADE	8T/4B EGR. SHEETING

E TYPE II BARREL ELIMINATOR BARRICADES

Mfr. No.	Product Description	Specifications
97-01-003-01**	PLASTX BARREL ELIMINATOR	12T/8B EGR. SHEETING*
97-01-003-02**	PLASTX BARREL ELIMINATOR	12T/8B H.I. SHEETING*
97-01-003-11**	PLASTX BARREL ELIMINATOR	PRISMATIC FLUOR. ORANGE W/ DIRECT. ARROW 12/8
...



E
BARREL ELIM.
97-01-003-11

*HIGH MOVING ITEM

**NEW AND IMPROVED PANEL MOUNTING CLIPS.

SEE PRICE LIST FOR ADDITIONAL CONFIGURATIONS.

M-CADES

The most versatile barricade system on the market today. Universal plastic leg available in 44" & 60" height. No cutting, drilling or painting! Unique leg "knuckle & lock" (patent pending) eliminates the worry of over spreading. Folds flat to a closed thickness of 3". Molded holes in legs and panels eliminates the guess work and provides for quick and easy assembly. Panels available in three sizes: 12"x24", 8"x24", and 4"x24". Injection plastic molded components are stronger than hollow legs and panels. Modular design allows for quick and simple replacement of damaged components. Optional sand bar accommodates a 35lb. sand bag in front and back. Universal mix & match parts allow for simple unit reconfiguration. Ability to purchase system components or assembled products. Stenciling is available on all barricades. Contact Cortina.

UNIQUE KNUCKLE ELIMINATES THE NEED FOR BOLTS, MAKING ASSEMBLY EASY.

MODULAR PANEL ALLOWS YOU TO CONVERT TO A TYPE I, TYPE II USING THE SAME COMPONENTS AND FACILITIES PANEL REPLACEMENT

SUPERIOR HIGH-STRENGTH RESIN WITHSTANDS TEMPERATURE EXTREMES AND HAS A UV PROTECTION PACKAGE FOR YEAR-ROUND USE.

UNIVERSAL LEFT/RIGHT LEGS

MOLDED HOLES FOR EASY PANEL MOUNTING. (NO DRILLING REQUIRED.)

PLASTIC PANELS ARE MODULAR, HOLES ARE MOLDED AND WILL NOT ROT OR SPLINTER. STRONGER THAN HOLLOW CORE BLOW-MOLDED PANELS.

FOLDS FLAT FOR EASY STORAGE





A TYPE I M-CADE

Mfr. No.	Product Description	Specifications
97-11-001-11	MODULAR BARRICADE TYPE I	12/8 PRISMATIC FLUOR. ORG. W/ DIRECT. ARROW
97-11-001-44	MODULAR BARRICADE TYPE I	44" EGR*
97-11-001-45	MODULAR BARRICADE TYPE I	44" H.I.*

B TYPE II 12/8 PANELS

Mfr. No.	Product Description	Specifications
97-11-002-11	MODULAR BARRICADE TYPE II	8/8 PRISMATIC FLUOR ORG. W/ DIRECT ARROW
97-11-003	MODULAR BARRICADE TYPE II	12T/8B PLAIN
97-11-003-11	MODULAR BARRICADE TYPE II	12T/8B PRIS. FLUOR. ORG. W/ DIRECT ARROW
97-11-003-44	MODULAR BARRICADE TYPE II	12T/8B EGR
97-11-003-45	MODULAR BARRICADE TYPE II	12T/8B HI

C TYPE III M-CADE

Mfr. No.	Product Description	Specifications
97-1300	MODULAR ADAPTOR TYPE III	60"

D TYPE II 8/8 PANELS

Mfr. No.	Product Description	Specifications
97-11-002-44	MODULAR BARRICADE TYPE II	44" EGR*
97-11-002-45	MODULAR BARRICADE TYPE II	44" H.I.*



E M-CADE-IB

IB-internal ballast bottom panel holds up to 15lbs. of sand. M-Cade is totally adaptable to be used as a Type I or Type II Barricade. Available with Engineer grade EG or Hi-Intensity grade sheeting. Material is hi-impact co-polyolefin structural resin. Weight empty is 14lbs. Meets all MUTCD requirements recognized by the FHWA, meets NCHRP-350, letter WZ-185. Folds flat with stacking pins for ease of storage. Available with custom legends, silk screened or hot stamped to bottom panel. Full open interlock eliminates sag. Unique "bolt-less" knuckle design.

Mfr. No.	Product Description	Specifications
97-12-001-44	IB EG TYPE I	12"X24" SHEETED TOP PANEL, PLAIN BOTTOM PANEL*
97-12-001-45	IB HIGH INTENSITY TYPE I	12"X24" SHEETED TOP PANEL, PLAIN BOTTOM PANEL
97-12-002-44	IB EG TYPE II	8"X24" SHEETED TOP PANEL, 12"X24" BOTTOM W/ 8" REFLECTIVE
97-12-002-45	IB HIGH INTENSITY TYPE II	8"X24" SHEETED TOP PANEL, 12"X24" BOTTOM W/ 8" REFLECTIVE*

* HIGH MOVING ITEM

SEE PRICE LIST FOR ADDITIONAL CONFIGURATIONS.

STEELCADES

Cost-effective metal/plastic barricade is built using 12 gauge painted, steel legs and M-Cade plastic panels. Provides a superior cost-effective option that eliminates wood boards that rot, warp and peel. Stronger than blow-molded panels. Recessed holes for panel mounting. No drilling required. 8" bottom panel for identification 45" high x 24" wide.

45"



24"

M-CADE REPLACE-
MENT PANELS
ARE INJECTION
MOLDED. WON'T
ROT OR SPLINTER.
STRONGER THAN
BLOW-MOLDED
PANELS.

RECESSED HOLES
FOR PANEL
MOUNTING. NO
DRILLING
REQUIRED

8" BOTTOM
PANEL FOR
IDENTIFICATION

A TYPE I STEELCADE

Mfr. No.	Specifications
97-03-001	12/8 EGR TOP ONLY*
97-03-001-01	12/8 H.I. TOP ONLY
97-03-001-11	12/8 PRISMATIC FLUOR. ORG. W/ DIRECT. ARROW

A
TYPE I
97-03-001

B TYPE II STEELCADE

Mfr. No.	Specifications
97-03-002	8/8 EGR*
97-03-002-01	8/8 H.I.
97-03-003-01	ELIMINATOR 12/8 EGR.
97-03-003-01-11	12/8 PRISMATIC, FLUOR. ORG. W/ DIRECT. ARROW
97-03-003-02	12/8 H.I.



*Offering
The Industry's
**LARGEST
SELECTION**
of Barricades!*

* HIGH MOVING ITEM



P-CADE BARRICADES



PEDESTRIAN BARRICADE ADA-COMPLIANT P-CADE™

- Total versatility. Modular system allows for complete flexibility, use in a straight line or around man holes and work zones
- P-Cade™ meets or exceeds ADA Guidelines and MUTCD Standards
- Made from durable, UV-Stabilized polypropylene
- Provides a continuous, obstruction free guidance system through work zones, lower rail will not trap canes
- Easy to assemble no hardware or tools required
- Quick set-up and tear down
- Accepts all barricade lights
- Easy carry handle
- Stacks for easy transport and storage with built-in stacking legs.
- Ballast with 97-BALG tubes or with sand bags
- Order legs and parts individually or as a kit.
- Designed for use with the Cortina 2" X 8" extruded plank board, (Will work with other mfg.'s 2" X 8" boards as well)

Mfr. No.	Product Description	Specifications
97-01-1600	P-CADE LEG	LEG ONLY
97-1700-6G	P-CADE 6' SYSTEM KIT	(3) P-CADE LEGS - (4) 2"x8"x6' PLANK BOARDS STRIPED 2 SIDES EGR

SEE PAGE 14 FOR PLANK BOARDS AND I-BEAMS.

BARRIER SYSTEMS

Whether you need a long term or temporary system to cordon off an area, the Patented PLASTX A-Frame Barrier System offers an easy and convenient solution. The unique A-Frame leg won't rot, rust, crack or peel. Its unique design will hold I-Beam configured boards, wood planks, or extruded plastic plank boards. Will hold all manufacturers boards.

A - FRAME LEGS

(I-Beam not included) Injection molded, structural foam A-Frame legs are the most durable units available on the market. Mounting holes accommodate virtually all boards on the market today. Superior to blow-molded units.

A BALLASTED A-FRAME SYSTEM

Optional weight cartridges can be attached to A-Frame legs. Provides up to 7 lbs. of additional weight. Flexible A-Frame can be used as standard system or with ballast cartridges for applications that need additional weight. Unique A-Frame design holds I-Beam or wood planks.

Mfr. No.	Product Description
97-01-004	A-FRAME W/ SLOTS FOR WEIGHT CARTRIDGE
97-01-004-CE	A-FRAME W/ PRE-FILLED WEIGHT CARTRIDGE

B I - BEAMS

I-Beams are manufactured using exterior grade PVC providing year round, all weather durability. 7 year UV package protects from deterioration. "T"-Beam design protects sheeting.

Mfr. No.	Product Description	Specifications
97-01-008	6' I BEAM	PLAIN
97-01-008-01	6' I BEAM EGR. SHEETING	1 SIDE
97-01-008-02	6' I BEAM EGR. SHEETING	2 SIDES*
97-01-008-03	6' I BEAM HI-INTENSITY SHEETING	1 SIDE
97-01-008-04	6' I BEAM HI-INTENSITY SHEETING	2 SIDES
97-01-008-06	6' I BEAM	1 SIDE LIME
97-01-008-07	6' I BEAM	2 SIDES LIME
97-01-009	8' I BEAM	PLAIN
97-01-009-01	8' I BEAM EGR. SHEETING	1 SIDE
97-01-009-02	8' I BEAM EGR. SHEETING	2 SIDES*
97-01-009-03	8' I BEAM HI-INTENSITY SHEETING	2 SIDES*
97-01-009-04	8' I BEAM HI-INTENSITY SHEETING	1 SIDE
97-01-009-06	8' I BEAM	1 SIDE LIME
97-01-009-07	8' I BEAM	2 SIDES LIME
97-01-010	10' I BEAM	PLAIN
97-01-010-01	10' I BEAM EGR SHEETING	1 SIDE
97-01-010-02	10' I BEAM EGR SHEETING	2 SIDES
97-01-010-03	10' I BEAM HIGH INTENSITY SHEETING	1 SIDE
97-01-010-04	10' I BEAM HIGH INTENSITY SHEETING	2 SIDES
97-01-012	12' I BEAM	PLAIN
97-01-012-01	12' I BEAM EGR SHEETING	1 SIDE
97-01-012-02	12' I BEAM EGR SHEETING	2 SIDES
97-01-012-03	12' I BEAM HI SHEETING	1 SIDE
97-01-012-04	12' I BEAM HI SHEETING	2 SIDES
97-01-013-02	4' I BEAM EGR SHEETING	2 SIDES
97-01-013-03	4' I-BEAM HI SHEETING	2 SIDES
97-01-013-04	4' I-BEAM HI SHEETING	1 SIDE



A
BALLASTED A-FRAME
97-01-004-CE



A
BALLASTED A-FRAME
97-01-004-CE



B
I-BEAM
97-01-013-04
HI-1 SIDE



C

Mfr. No.	Product Description
97-01-004-02	A-FRAME, 1 BOARD, WHITE*
97-01-004-02B	A-FRAME, 1 BOARD, BLUE*
97-01-004-02G	A-FRAME, 1 BOARD, GREEN
97-01-004-02O	A-FRAME, 1 BOARD, ORANGE*
97-01-004-02R	A-FRAME, 1 BOARD, RED
97-01-004-02Y	A-FRAME, 1 BOARD, YELLOW*

D

Mfr. No.	Product Description
97-01-004-3	A-FRAME FOR USE WITH TYPE III

E

Mfr. No.	Product Description
97-01-004	A-FRAME 2 BOARD, WHITE
97-01-004B	A-FRAME 2 BOARD, BLUE
97-01-004G	A-FRAME 2 BOARD, GREEN
97-01-004O	A-FRAME 2 BOARD, ORANGE
97-01-004R	A-FRAME 2 BOARD, RED
97-01-004Y	A-FRAME 2 BOARD, YELLOW

*HIGH MOVING ITEM




TWO BOARD FRAMES
97-01-004 (WHITE)

T-BOARDS

FOR TYPE III BARRICADES

A-FRAME & P-CADE

BARRICADE LEGS

A PLASTX T-BOARD

T for TOUGH! Made of extruded exterior grade PVC, UV Stabilized white color custom compounded in the board. There are 2 styles - thin 1" x 8" or standard 2" x 8" profiles. Stocked in 6' & 8' lengths and minimal lead-time for shorter and longer lengths. They won't rot, crack or peel and the smooth exterior is chemical resistant which reduces maintenance. 7 years UV package protects against deterioration. Withstands extreme temperatures. Available plain or striped with engineer grade, or hi-intensity prismatic grade sheeting on 1 or 2 sides.

Mfr. No.	Product Description
97-01-0113	1x8x4 FT PLAIN
97-01-0113-01	1x8x4 FT EGR 1 SIDE
97-01-0113-02	1x8x4 FT EGR 2 SIDES
97-01-0113-03	1x8x4 FT HI 1 SIDE
97-01-0113-04	1x8x4 FT HI 2 SIDES
97-01-018	1x8x6 FT PLAIN
97-01-018-01	1x8x6 FT EGR 1 SIDE
97-01-018-02	1x8x6 FT EGR 2 SIDES
97-01-018-03	1x8x6 FT HI 2 SIDES
97-01-018-04	1x8x6 FT HI 1 SIDE
97-01-019	1x8x8 FT PLAIN
97-01-019-01	1x8x8 FT EGR 1 SIDE
97-01-019-02	1x8x8 FT EGR 2 SIDES
97-01-019-03	1x8x8 FT HI 2 SIDES
97-01-019-04	1x8x8 FT HI 1 SIDE
97-01-0213	2x8x4 FT PLAIN
97-01-028	2x8x6 FT PLAIN
97-01-028-01	2x8x6 FT EGR 1 SIDE
97-01-028-02	2x8x6 FT EGR 2 SIDES
97-01-028-03	2x8x6 FT HI 2 SIDES
97-01-028-04	2x8x6 FT HI 1 SIDE
97-01-029	2x8x8 FT PLAIN
97-01-029-01	2x8x8 FT EGR 1 SIDE
97-01-029-02	2x8x8 FT EGR 2 SIDES
97-01-029-03	2x8x8 FT HI 2 SIDES
97-01-029-04	2x8x8 FT HI 1 SIDE

Mfr. No.	Product Description
97-01-0110	1x8x10 FT PLAIN
97-01-0110-01	1x8x10 FT EGR 1 SIDE
97-01-0110-02	1x8x10 FT EGR 2 SIDES
97-01-0110-03	1x8x10 FT HI 2 SIDES
97-01-0110-04	1x8x10 FT HI 1 SIDE
97-01-0112	1x8x12 FT PLAIN
97-01-0112-01	1x8x12 FT EGR 1 SIDE
97-01-0112-02	1x8x12 FT EGR 2 SIDES
97-01-0112-03	1x8x12 FT HI 2 SIDES
97-01-0112-04	1x8x12 FT HI 1 SIDE
97-01-0210	2x8x10 FT PLAIN
97-01-0210-01	2x8x10 FT EGR 1 SIDE
97-01-0210-02	2x8x10 FT EGR 2 SIDES
97-01-0210-03	2x8x10 FT HI 2 SIDES
97-01-0210-04	2x8x10 FT HI 1 SIDE
97-01-0212	2x8x12 FT PLAIN
97-01-0212-01	2x8x12 FT EGR 1 SIDE
97-01-0212-02	2x8x12 FT EGR 2 SIDES
97-01-0212-03	2x8x12 FT HI 2 SIDES
97-01-0212-04	2x8x12 FT HI 1 SIDE
97-01-0213	2x8x4 FT PLAIN
97-01-0213-01	2x8x4 FT EGR 1 SIDE
97-01-0213-02	2x8x4 FT EGR 2 SIDES
97-01-0213-03	2x8x4 FT HI 1 SIDE
97-01-0213-04	2x8x4 FT HI 2 SIDES

B TELESAR® TYPE III BARRICADES

Options Available: Telespar® uprights with Telespar® feet. Galvanized steel tubing for superior corrosion protection. Telespar® uprights and feet are 14 gauge, hot rolled high carbon steel, angle iron feet are 12 gauge, mill finish. Universal mounting holes, pre-punched 7/16". Square shape provides superior windload capabilities and inhibits warping. Plastic boards available in 4', 6', 8', 10' and 12' lengths. Reflective engineer or hi-intensity sheeting on one or both sides. Quick removal of uprights from feet. Allows for short term or permanent placement. Easy to assemble and replace parts if necessary. Accepts two flashing lights. NCHRP-350 accepted, meets MUTCD standards.



Mfr. No.	Product Description	Specifications
97-1700-6EG	TYPE III BARRICADE	6' BOARDS, 1 SIDE EGR
97-1700-62EG	TYPE III BARRICADE	6' BOARDS, 2 SIDES EG
97-1700-6HI	TYPE III BARRICADE	6' BOARDS, 1 SIDE HI-INTENSITY
97-1700-62HI	TYPE III BARRICADE	6' BOARDS, 2 SIDES HI-INTENSITY
97-1700-8EG	TYPE III BARRICADE	8' BOARDS, 1 SIDE EG
97-1700-82EG	TYPE III BARRICADE	8' BOARDS, 2 SIDES EG
97-1700-8HI	TYPE III BARRICADE	8' BOARDS, 1 SIDE HI-INTENSITY
97-1700-82HI	TYPE III BARRICADE	8' BOARDS, 2 SIDE HI-INTENSITY

C TYPE III KITS

The Type III Barricade System is designed to meet Type III requirements of MUTCD specifications for a barricade device. All plastic construction won't rot, rust, crack or peel. Uses standard Cortina I-Beams, A-Frames and M-Cade legs. Provides years of use. Patent Pending.

Mfr. No.	Product Description	Specifications
97-1300-61-E	TYPE III KIT 6' EGR	1 SIDE
97-1300-61-H	TYPE III KIT 6' HI	1 SIDE
97-1300-62-E	TYPE III KIT 6' EGR	2 SIDES
97-1300-62-H	TYPE III KIT 6' HI	2 SIDES
97-1300-81-E	TYPE III KIT 8' EGR	1 SIDE
97-1300-81-H	TYPE III KIT 8' HI	1 SIDE
97-1300-82-E	TYPE III KIT 8' EGR	2 SIDES*
97-1300-82-H	TYPE III KIT 8' HI	2 SIDES*
97-1300-101-E	TYPE III KIT 10' EGR	1 SIDE
97-1300-101-H	TYPE III KIT 10' HI	1 SIDE
97-1300-102-E	TYPE III KIT 10' EGR	2 SIDES
97-1300-102-H	TYPE III KIT 10' HI	2 SIDES
97-1300-121-E	TYPE III KIT 12' EGR	1 SIDE
97-1300-121-H	TYPE III KIT 12' HI	1 SIDE
97-1300-122-E	TYPE III KIT 12' EGR	2 SIDES
97-1300-122-H	TYPE III KIT 12' HI	2 SIDES



C
TYPE III KIT
97-1300-101-E

* HIGH MOVING ITEM

N-CADE SYSTEMS

A N-CADES

Designed to meet requirements of MUTCD specifications for barricade devices in narrow applications. Panel size: 24" H x 12" W. Available in two sizes: 36" (9lbs) and 44" (10lbs). Recessed weight cartridge area in legs. 100% Recyclable. Lights sold separately. NCHRP-350 certified.



Mfr. No.	Product Description	Specification
97-01-006	N-CADE 36"	EGR SHEETING*
97-01-006-01	N-CADE 36"	PLAIN
97-01-006-02	N-CADE 36"	H.I. SHEETING
97-01-006-05	N-CADE 36"	SCHOOL CROSSING LIME SHEETING
97-01-006-06	N-CADE 36"	PEDESTRIAN WARNING LIME/GREEN
97-01-006-07	N-CADE 36"	"CLOSED FOR CLEANING"
97-01-006-08	N-CADE 36"	"SLIPPERY WHEN WET"
97-01-007	N-CADE 44"	EGR SHEETING*
97-01-007-01	N-CADE 44"	H.I. SHEETING
97-01-007-03	N-CADE 44"	PLAIN
97-01-007-03CC	N-CADE 44"	"CLOSED FOR CLEANING"
97-01-007-03CL	N-CADE 44"	"CAUTION" LIME
97-01-007-03DN	N-CADE 44"	"DO NOT ENTER"
97-01-007-03EO	N-CADE 44"	"ELEVATOR OUT OF ORDER"
97-01-007-03KL	N-CADE 44"	"KEEP LEFT" ARROW
97-01-007-03KLR	N-CADE 44"	"KEEP LEFT/KEEP RIGHT" NON-REFLECTIVE
97-01-007-03KR	N-CADE 44"	"KEEP RIGHT" ARROW
97-01-007-03PR	N-CADE 44"	"POLICE ROAD CHECK AHEAD" NON-REFLECTIVE
97-01-007-03RC	N-CADE 44"	"ROAD CLOSED"
97-01-007-03SP	N-CADE 44"	"STOP POLICE CHECK POINT"*
97-01-007-03SW	N-CADE 44"	"SLIPPERY WHEN WET"*
97-01-007-03SX	N-CADE 44"	"SCHOOL X-ING" LIME*
97-01-007-03TA	N-CADE 44"	"TREE WORK AHEAD"
97-01-007-03TW	N-CADE 44"	"TWO WAY TRAFFIC SLOW DOWN"
97-01-007-03YT	N-CADE 44"	"YIELD TRUCK TRAFFIC"

B DIRECTIONAL I-BEAMS

Unique vertical panel & recycled rubber base offers high visibility portable delineation. Ideal for parking lots, crosswalks, schools and industrial plants.



Mfr. No.	Product Description	Specification
14-002	DIRECTIONAL I-BEAM BARRICADE	4' EGR
14-003	DIRECTIONAL I-BEAM BARRICADE	4' HI
14-004	DIRECTIONAL I-BEAM BARRICADE	4' FLUORESCENT ORANGE
14-005	DIRECTIONAL I-BEAM BARRICADE	4' LIME
14-006	DIRECTIONAL I-BEAM BARRICADE	RUBBER BASE
14-007-06	DIRECTIONAL I-BEAM BARRICADE	FLUORESCENT LIME REFLECTIVE
14-005SX	SCHOOL CROSSING, PRISMATIC	W/ 15# RUBBER BASE

* HIGH MOVING ITEM

SIGN LEGENDS

Sign legends ideal for a wide variety of work zone, institutional or industrial delineation.

Designed for PLASTX Type I Barricades and 36" or 44" PLASTX N-Cades.



BARRICADE SIGN LEGENDS

Mfr. No.	Product Description	Specification
13-01-010AL	BARRICADE TYPE I "THIS WAY" W/ LEFT ARROW	...
13-01-010AR	BARRICADE TYPE I "THIS WAY" W. RIGHT ARROW	...
13-01-010C	BARRICADE TYPE I "CAUTION"*	...
13-01-010DH	BARRICADE TYPE I "DANGER HIGH VOLTAGE"	...
13-01-010DL	BARRICADE TYPE I "DETOUR"	...
13-01-010DOP	BARRICADE TYPE I "DANGER OVERHEAD POWER LINES"	...
13-01-010DR	BARRICADE TYPE I "DETOUR"	...
13-01-010SC	BARRICADE TYPE I "SIDEWALK CLOSED"*	...
13-01-010SM	BARRICADE TYPE I "STOP MEN WORKING"*	...
97-02-001	SIGN: ELEVATOR OUT OF ORDER	(2C) FOR N-CADE
97-02-002	SIGN: CLOSED FOR CLEANING	(2C) FOR N-CADE
97-02-003	SIGN: SLIPPERY WHEN WET	(2C) FOR N-CADE
97-02-004	SIGN: DANGER HIGH VOLTAGE	(2C) FOR TYPE I BARRICADE
97-02-005L	SIGN: THIS WAY ARROW LEFT	(1C) FOR TYPE I BARRICADE
97-02-005R	SIGN: THIS WAY ARROW RIGHT	(1C) FOR TYPE I BARRICADE
97-02-006	SIGN: ROAD CLOSED AHEAD	(1C) FOR N-CADE
97-02-007	SIGN: 2WAY TRAFFIC SLOW DOWN	(1C) FOR TYPE I BARRICADE
97-02-008	SIGN: YIELD TRUCK TRAFFIC	(2C) FOR N-CADE
97-02-009	SIGN: STOP MEN WORKING	(2C) FOR TYPE I BARRICADE
97-02-010L	SIGN: DETOUR ARROW LEFT	(1C) FOR TYPE I BARRICADE
97-02-010R	SIGN: DETOUR ARROW RIGHT	(1C) FOR TYPE I BARRICADE
97-02-011	SIGN: CAUTION	(1C) FOR TYPE I BARRICADE
97-02-012	SIGN: KEEP RIGHT ARROW	(1C) FOR N-CADE
97-02-013	SIGN: KEEP LEFT ARROW	(1C) FOR N-CADE
97-02-014	SIGN: DO NOT ENTER	(2C) FOR N-CADE
97-02-015	SIGN: STOP POLICE CHECKPOINT	(2C) FOR N-CADE
97-02-016	SIGN: SCHOOL CROSSING	(LIME) (1C) FOR N-CADE
97-02-017	SIGN: CAUTION	FLUORESCENT LIME REFLECTIVE
97-02-018	SIGN: TREE WORK AHEAD	(1C) FOR N-CADE
97-02-019	SIGN: SIDEWALK CLOSED	(1C) FOR TYPE I BARRICADE
97-02-020	SIGN: MEN WORKING	(2C) FOR N-CADE
97-02-021	SIGN: ROAD CLOSED 12" X 24"	(1C) FOR TYPE I BARRICADE
97-02-022L	SIGN: DETOUR ARROW LEFT 12" X 24"	(1C) FOR N-CADE
97-02-022R	SIGN: DETOUR ARROW RIGHT 12" X 24"	(1C) FOR N-CADE
97-02-023	SIGN: CAUTION MEN WORKING SLOW DOWN	(1C) FOR N-CADE
97-02-024	12" X 24" PANEL SCREEN	YELLOW

* HIGH MOVING ITEM



BARRICADE COMPONENTS

Mfr. No.	Product Description	Specification
03-10-007-L	PLASTX TYPE I REPLACEMENT PANEL	EGR LEFT SLANT 12" X 24"
03-10-007-R	PLASTX TYPE I REPLACEMENT PANEL	EGR RIGHT SLANT 12" X 24"
03-10-008-30	EGR BARR. TAPE	8" X 50 YD L
03-10-008-31	EGR BARR. TAPE	8" X 50 YD R
03-10-008-32	EGR BARR. TAPE	12" X 50 YD L
03-10-008-33	EGR BARR. TAPE	12" X 50 YD R
03-10-008-34	H.I. BARR. TAPE	8" X 50 YD L
03-10-008-35	H.I. BARR. TAPE	8" X 50 YD R
03-10-008-36	H.I. BARR. TAPE	12" X 50 YD L
03-10-008-37	H.I. BARR. TAPE	12" X 50 YD R
03-10-008-38	EGR BARR. TAPE	6" X 50 YD. L
03-10-008-39	EGR BARR. TAPE	6" X 50 YD. R
03-10-008-L	PLASTX TYPE I REPLACEMENT PANEL	HI LEFT 12" X 24"
03-10-008-R	PLASTX TYPE I REPLACEMENT PANEL	HI RIGHT 12" X 24"
03-10-009-L	PLASTX TYPE II REPLACEMENT PANEL	EGR LEFT SLANT 8" X 24"
03-10-009-R	PLASTX TYPE II REPLACEMENT PANEL	EGR RIGHT SLANT 8" X 24"
03-10-010-L	PLASTX TYPE I REPLACEMENT PANEL	HI LEFT 8" X 24"
03-10-010-R	PLASTX TYPE I REPLACEMENT PANEL	HI RIGHT 8" X 24"
03-10-013	METAL LEG FOR BARRICADE	12 GA. PAINTED WHITE
03-10-018	M-CADE PANEL	FLUORESCENT ORANGE
...	BLACK DIRECTION ARROW 12" X 24"	...
03-219-1036F	WEIGHT CARTRIDGES	SNAPS INTO ALL FOUR BARRICADE LEGS
13-10-006	PLASTIC PANEL FASTENERS	6 PACK
13-10-006B	PLASTIC PANEL FASTENERS	BULK
13-10-007	PLAIN BLACK PANEL	12" X 24"
13-10-009	PLAIN BLACK PANEL	8" X 24"
13-10-012	M-CADE PANEL 12" X 24"	FL. ORANGE PRISMATIC W/ DIRECTIONAL ARROW
13-10-013	M-CADE PANEL 8" X 24"	FL. ORANGE PRISMATIC W/ DIRECTIONAL ARROW
97-1100	MODULAR BARRICADE LEG	44"
97-1400	M-CADE SAND BAR FOR BARRICADES	3"X24"
97-1500	M-CADE PANEL 8"X24"	NO SHEETING
97-1500-L	M-CADE PANEL, 8" X 24"	EGR LEFT
97-1500-R	M-CADE PANEL, 8" X 24"	EGR RIGHT
97-1500-1	M-CADE PANEL, 8" X 24"	HI LEFT
97-1500-2	M-CADE PANEL, 8" X 24"	HI RIGHT
97-1600	M-CADE PANEL 12"X24"	NO SHEETING
97-1600-L	M-CADE PANEL, 12" X 24"	EGR LEFT
97-1600-R	M-CADE PANEL, 12" X 24"	EGR RIGHT
97-1600-1	M-CADE PANEL, 12" X 24"	HI LEFT
97-1600-2	M-CADE PANEL, 12" X 24"	HI RIGHT
97-1650SF	SANDFILLABLE PANEL FOR M-CADE	...

* HIGH MOVING ITEM



BARRICADE SYSTEMS

*Great for: Road Work, Utility work, Restricted areas and events, Building sites,
Temporary foot paths, Identifying obstacles/dangerous areas*

A MODULAR BARRICADE SYSTEM

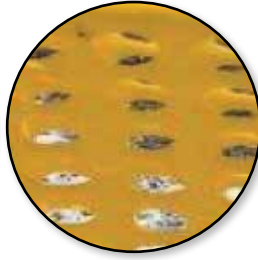
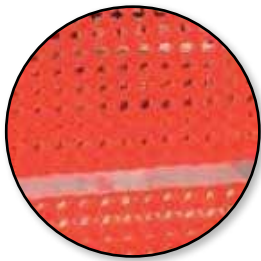


Easy to set-up, easy to transport, occupies minimal storage space, reusable, lightweight, resistant to atmospheric agents highly visible. Combine sections using cable ties.

Mfr. No.	Product Description	Specification
03-905G	ORANGE BARRIER SYSTEM	40" X 40"
03-906G	YELLOW BARRIER SYSTEM	40" X 40"
03-907G	GREEN BARRIER SYSTEM	48" X 48"
03-908G	ORANGE BARRIER SYSTEM	48" X 48"




MODULAR
BARRICADE SYSTEM
03-905G




MODULAR
BARRICADE SYSTEM
03-908G




MODULAR
BARRICADE SYSTEM
03-906G

BARRICADE LIGHTS

Features: Green Energy - No Battery Required, Automatic on Dusk/Off Dawn (Flash), Bidirectional, Viewing Distance Over 1 Mile, Flash Automatic when Ambient Light Falls Below 400 lux, Flash Rates 60 Times Per Minute, Light - 2 pieces 5 mm, Super Bright Amber LED 20,000 Hour Life.

A
SOLAR
BARRICADE
LAMPS
03-10-SBLG



A SOLAR BARRICADE LAMPS



- Solar Module 0.3 w / Mono Crystalline Panel
- Battery - 1.2 V/1800 mAh Ni-MH Battery
- Non-Replaceable S.T.
- Battery Life - 500 Times Recharging Cycles
- Operation Current 60 mA
- Battery included
- Built in circuit board

Mfr. No.	Product Description
03-10-SBLG	H 13.38" W 7.28" D 3.78" YELLOW BODY, AMBER LENS
03-10-RSBL	H 13.38" W 7.28" D 3.78" YELLOW BODY, RED LENS

B LED SUNDOWNER



Meets MUTCD standards and ITE certification. Operates with 4 D-cell batteries. 3 way (flashing, steady burn, off) LED lights located in the strongest area of the case for protection. Simple, one-piece battery compartment. Durable protected LED lighting assembly. Parts are not interchangeable with old incandescent light.

Mfr. No.	Product Description	Case Count
03-10-WAYDC	SUNDOWNER	STD PK 10



B
LED
SUNDOWNER



C
PARALTA
LIGHT

C PARALTA LIGHT



Meets MUTCD standards and ITE certification. Operates with single or double 6-volt batteries (not included). Photocell circuit is designed to sense the ambient light levels. LED light. 90° lens for easy use on Barricades and delineation devices. 7" polycarbonate lens. Parts are not interchangeable with other barricade lights.

Mfr. No.	Product Description	Case Count
03-10-3WAYKC	PARALTA - 6 VOLT	STD PK 10



D BARRICADE LIGHTS

Meets all MUTCD and ITE specifications in 12 volt configuration. Reliable chip circuit is weather resistant. 7” polycarbonate lens provides extreme durability. Attaches to all barricades. State of the art optics. UV stabilized polycarbonate. 10 lights, 1 wrench and 10 bolts are included in a package.

Mfr. No.	Product Description	Case Count
03-10-3WAY6V	6V W/PHOTOCELL, 3-WAY SWITCH, YELLOW	CASE/AMBER LENS (10/CS)*
03-10-3WAYDC	D-CELL W/PHOTOCELL, 3-WAY SWITCH, YELLOW CASE/AMBER LENS	(10/CS) * - D CELL BATTERIES
03-10-3WRY6V	6V W/PHOTOCELL, 3-WAY SWITCH, YELLOW CASE/RED LENS	(10/CS) - 6 VOLT BATTERIES
03-10-3WRYDC	D-CELL W/PHOTOCELL, 3-WAY SWITCH, YELLOW CASE/RED LENS	(10/CS) - D CELL BATTERIES
03-10-BLAY6V	6V, TYPE B LIGHT, YELLOW CASE/AMBER LENS	(10/CS)*- 6 VOLT BATTERIES
03-10-BLAYDC	D-CELL, TYPE B LIGHT, YELLOW CASE/AMBER LENS	(10/CS)*- D CELL BATTERIES
03-10-BLRY6V	6V, TYPE B LIGHT, YELLOW CASE/RED LENS	(10/CS) - 6 VOLT BATTERIES
03-10-BLRYDC	D-CELL, TYPE B LIGHT, YELLOW CASE/RED LENS	(10/CS) - D CELL BATTERIES
03-10-001-1	BARRICADE LIGHT BOLT	...
03-10-002-1	BARRICADE LIGHT WRENCH / COMBO TOOL	...

* HIGH MOVING ITEM

DELINEATOR POSTS

The Cortina EZ Grab Delineator Post is made from 100% impact-resistant polyethylene material. Its EZ Grab handle provides portability and ease of movement. UV inhibitors resist fading. Each post comes with two 3" or 4" high intensity reflective bands. Bands are recessed inside post for protection. The base is 100% recycled rubber and is extremely durable. Post is NCHRP-350 Certified and stands 45" high. Optional oval reflex reflector or strobe adds extra measure of safety. Colored posts available for customization.

Available in Blue, Green, Orange, Lime, Red and White.



FLARED BOTTOM
TO ACCEPT
WEIGHTED BASES.

A
DELIN. POST
03-734

B
DELINEATOR
03-745AB

4.5" DIAMETER

45"

DURABLE
POLYETHYLENE
MATERIAL



A
DELIN. POST
03-739
STROBE

B
DELIN. BASE
03-733

PERMANENT MOUNT
WEIGHTED BASES

A DELINEATOR POSTS

Mfr. No.	Product Description	Specification
03-734	EASY GRAB DELINEATOR POST	FLARED 45" W/ (2) EA. 3" H.I COLLARS*
03-734RBC	DELINEATOR POST FLARED	45" W/ (2) EA. 3" HI COLLARS, 10# RUBBER BASE IN BOX*
03-735	DELINEATOR POST STRAIGHT	(2) EA. 3" RFL. BANDS FOR USE WITH PERMANENT BASE
03-737	EASY GRAB DELINEATOR POST FLARED	45" W/ (2) EA. 4" HI COLL. & OVAL REFLECTORS*
03-739	EASY GRAB DELINEATOR POST FLARED	45" W/ (2) EA. 3" HI COLLARS AND 2 EA. STROBES*
03-740	EASY GRAB DELINEATOR POST FLARED	45" PLAIN - FLARED BOTTOM
03-745AB	PERM. MOUNT DELINEATOR POST	(2) EA. 3" REFL. BANDS, ALUMINUM BASE
03-746ABC	PERM. MOUNT DELINEATOR POST	(2) EA. 4" REFL. BANDS, ALUMINUM BASE*
03-747	DELINEATOR POST FLARED	45" W/ (2) EA. 4" HI COLLARS, 10# RUBBER BASE IN BOX*
03-747BRBC	EASY GRAB DELINEATOR POST FLARED	45", BLUE W/ (2) 4" HI COLLARS POST ONLY
03-747FGRBC	EASY GRAB DELINEATOR POST FLARED	45", FOREST GREEN W/ (2) 3" HI COLLARS W/10# RUBBER BASE IN BOX
03-747WRBC	EASY GRAB DELINEATOR POST FLARED	45", WHITE W/ (2) 3" HI COLLARS W/10# RUBBER BASE IN BOX
03-747YRBC	EASY GRAB DELINEATOR POST FLARED	45", YELLOW W/ (2) 3" HI COLLARS W/10# RUBBER BASE IN BOX

B DELINEATOR BASES

Mfr. No.	Product Description	Specification
03-730	DELINEATOR BASE	RUBBER 10#*
03-731	DELINEATOR BASE	RUBBER 15#*
03-733	ALUMINUM BASE	FOR EZ-GRAB DELINEATOR



C EZ-GRAB 5 POST CURB BASE SYSTEM™

Modular EZ-Grab 5 Post Curb System™, 100% recycled rubber base accepts up to 5 of the Cortina EZ-Grab™ delineators and creates a strong visual barrier around hazardous work areas. Great to use as a traffic transitional device approaching toll booths, in school zones, hospitals or for general pedestrian control. Easy to move assembled unit around work zones. Use all orange posts or mix and match colors for additional visibility. Quick and easy set up, posts just push through bottom of base.

Mfr. No.	Product Description	Specification
03-729-5	EZ-GRAB 5 POST CURB BASE SYSTEM™	INCLUDES 5 EACH OF 03-734 POSTS AND BASE.

* HIGH MOVING ITEM

D TUBULAR SURFACE MOUNT DELINEATOR

Tubular surface mount delineator is a high performance, surface mounted, flexible plastic channelization and delineation device. Product can be bonded to asphalt or concrete surfaces to provide traffic control in areas requiring easy removal or relocation. Product provides excellent impact resistance and rebounds after impact.



Mfr. No.	Product Description	Specification
04-36-WWG	36" TUBULAR SURFACE MOUNT MARKER WHITE	3" X 6" HI-INTENSITY WHITE SHEETING
04-36-YYG	36" TUBULAR SURFACE MOUNT MARKER YELLOW	3" X 6" HI-INTENSITY YELLOW SHEETING
04-36-BWG	36" TUBULAR SURFACE MOUNT MARKER BLACK	3" X 6" HI-INTENSITY WHITE SHEETING
04-36-OWG	36" TUBULAR SURFACE MOUNT MARKER ORANGE	3" X 6" HI-INTENSITY WHITE SHEETING
04-48-WWG	48" TUBULAR SURFACE MOUNT MARKER WHITE	3" X 6" HI-INTENSITY WHITE SHEETING
04-48-YYG	48" TUBULAR SURFACE MOUNT MARKER YELLOW	3" X 6" HI-INTENSITY YELLOW SHEETING
04-48-BWG	48" TUBULAR SURFACE MOUNT MARKER BLACK	3" X 6" HI-INTENSITY WHITE SHEETING
04-48-OWG	48" TUBULAR SURFACE MOUNT MARKER ORANGE	3" X 6" HI-INTENSITY WHITE SHEETING

E EZ-GRAB WIDE BODY DELINEATOR

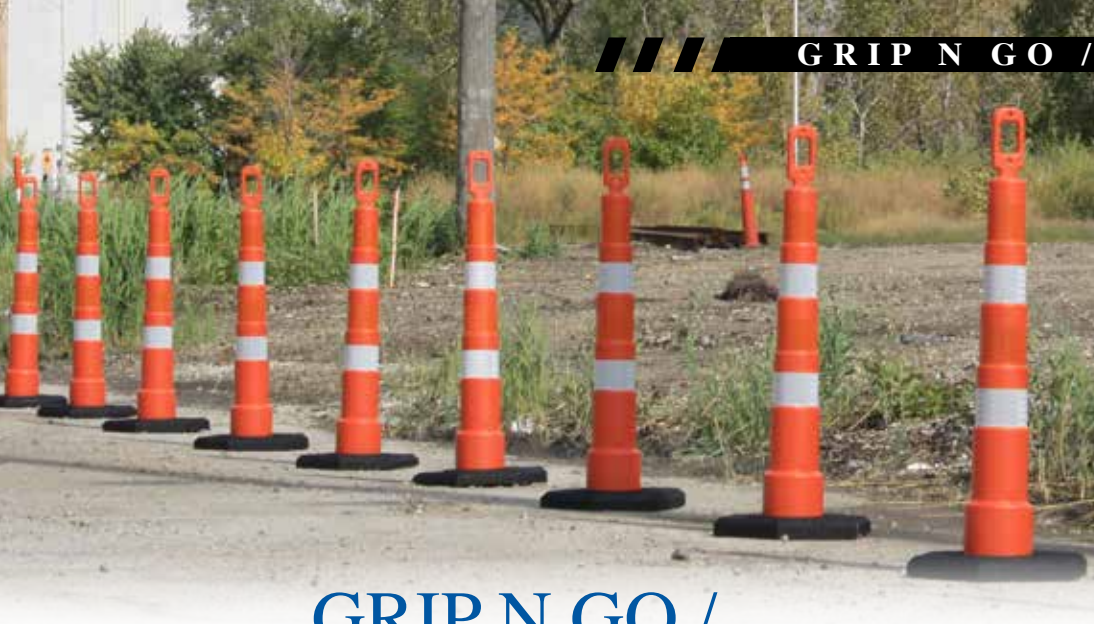
Cortina Safety Products Group is pleased to introduce a revolutionary new temporary traffic control device. Lower profile design takes up less warehouse, truck and road surface space. Stepped sides prevent sticking when stacked providing for faster set up. EZ-Grab handle makes it easier to transport and store. Built to withstand repeated impacts and temperature extremes. Provides high visibility target value within a smaller space. Constructed of HDPE with UV inhibitors. EZ-Grab handle design makes moving and stacking it a breeze. Handle has built in holder for traffic control batons. Handle has center mount light bolt hole for streamlined delineation. Available with Hi-Intensity or Fluorescent Prismatic sheeting in 4" and 6" configurations. 44.12" tall 13" diameter at top tier, 16.5" diameter at bottom shoulder. Meets NCHRP-350 crash test requirements.

Mfr. No.	Product Description	Specification
03-755-P	WIDE BODY DELINEATOR	PLAIN W/ NO SHEETING
03-755-24HI	WIDE BODY DELINEATOR	2-4" HI INTENSITY STRIPES
03-755-4HI	WIDE BODY DELINEATOR	4-4" HI INTENSITY STRIPES
03-755-6HI	WIDE BODY DELINEATOR	4-6" HI INTENSITY STRIPES
03-755-4FP	WIDE BODY DELINEATOR	4-4" FLUORESCENT STRIPES
03-755-6FP	WIDE BODY DELINEATOR	4-6" FLUORESCENT STRIPES
03-732	RECYCLED RUBBER BASE	20 LBS.



WIDE BODY
DELINEATOR
03-755-6HI

* HIGH MOVING ITEM



GRIP N GO / TRAILBLAZER



A GRIP N GO CHANNELIZER CONE

Meets NCHRP-350 Certification and MUTCD standards. Channelizer cone utilizes less space than traditional barricades or drums. 42" tiered-cone design with the GRIP AND GO handle. 49.8" to the handle top. Available with various reflective sheeting and recessed areas for protection when stacking. Handle accommodates most barricade lights and tape products. Polyethylene with UV inhibitors minimizes fading. HI= Hi-Intensity Sheeting, EG=Engineer Grade Sheeting, DG=Diamond Grade Sheeting.

Mfr. No.	Product Description	Specification
03-750	42" CHANNELIZER	NO SHEETING
03-750-4EGG	42" CHANNELIZER	(4) 4" EG SHEETING, OWOW
03-750-6EG	42" CHANNELIZER	(4) 6" EG SHEETING, OWOW
03-750-4FP	42" CHANNELIZER	(4) 4" DG SHEETING, OWOW
03-750-6FP	42" CHANNELIZER	(4) 6" DG SHEETING, OWOW
03-750-64HI	42" CHANNELIZER	(1) 4" & (1) 6" HI PRIZ SHEETING
03-750-6HIFF	42" CHANNELIZER	(2) 6" DG & (2) 6" HI PRIZ SHEETING
03-750-4HI	42" CHANNELIZER	(4) 4" HI-INT STRIPES, OWOW
03-750-6HI	42" CHANNELIZER	(4) 6" HI-INT STIPES, OWOW
03-752-10	10 LB. RUBBER BASE	CHANNELIZER BASE
03-752-16	16 LB. RUBBER BASE	CHANNELIZER BASE
03-752-30	30 LB. RUBBER BASE	CHANNELIZER BASE

B TRAILBLAZER VERTICAL PANEL

Meets MUTCD. Engineer Grade or High-Intensity reflective sheeting available. Only weighs 3.4 lbs sheeted excluding rubber base. Product is stackable and made from polyethylene. Recessed panels protect reflective sheeting. 15 lbs, 20 lbs and 30 lbs recycled rubber bases available.

Mfr. No.	Product Description	Specification
03-760	TRAILBLAZER PANEL	NO SHEETING. TOP ONLY
03-760-EGG	TRAILBLAZER PANEL	ENGINEER GRADE SHEETING. BOTH SIDES. TOP ONLY
03-760-HIG	TRAILBLAZER PANEL	HI-INTENSITY SHEETING
03-760-15#	15 LBS RUBBER BASE	18.5" W X 22" L X 1.3" H
03-760-20G	20 LBS RUBBER BASE	18.5" W X 22" L X 1.8" H
03-760-30#	30 LBS RUBBER BASE	18.5" W X 22" L X 2.6" H

 **TRAILBLAZER**
03-760-HIG

CONICAL HEIGHT: 42"
OVERALL HEIGHT: 49.8"
CONICAL WIDTH AT TOP: 4"
CONICAL WIDTH AT BASE: 7.56"





CHANNELIZER CONES

The Channelizer Cone measures 36" or 42" in height.

It's made of flexible high density Polyethylene. UV inhibitors minimize fading.

Patented handle design allows for easy movement and prevents cones from sticking.

Stackable for storage and transport. Available plain or with 6" and lower

4" reflective collars. Bases will not crush. Meets Federal MUTCD

standards. Parades/Crowd Control, Industrial Plants, Parking Lots, and Airports.



A
36"
CHANNELIZER
CONES

B
42"
CHANNELIZER
CONES

A 36" CHANNELIZER CONE



Mfr. No.	Product Description	Specification
03-770-36-64OW	36" CONE	ORANGE W/ 6" AND 4" HI-INTENSITY REFLECTIVE COLLARS
03-770-36-P	36" CONE	PLAIN ORANGE
03-770-36L64	36" CONE	FLOURESCENT LIME W/ (1) 6" & (1) LOWER 4" REFLECTIVE COLLAR
03-770-36B64	36" CONE	BLUE W/ (1) 6" & (1) LOWER 4" COLLAR
03-770-36Y64	36" CONE	YELLOW W/ (1) 6" & (1) LOWER 4" REFLECTIVE COLLAR
03-770-36L-P	36" CONE	PLAIN FLOURESCENT LIME
03-770-36B-P	36" CONE	PLAIN BLUE
03-770-36Y-P	36" CONE	PLAIN YELLOW
03-770-5	BASE	10 LB
03-770-6	BASE	15 LB

B 42" CHANNELIZER CONE



Mfr. No.	Product Description	Specification
03-770-42-64OW	42" CONE	ORANGE W/ 6" AND 4" HI-INTENSITY REFLECTIVE COLLARS
03-770-42-P	42" CONE	PLAIN ORANGE
03-770-42L64	42" CONE	FLOURESCENT LIME W/ (1) 6" & (1) LOWER 4" REFLECTIVE COLLAR
03-770-42B64	42" CONE	BLUE W/ (1) 6" & (1) LOWER 4" COLLAR
03-770-42Y64	42" CONE	YELLOW W/ (1) 6" & (1) LOWER 4" REFLECTIVE COLLAR
03-770-42L-P	42" CONE	PLAIN FLOURESCENT LIME
03-770-42B-P	42" CONE	PLAIN BLUE
03-770-42Y-P	42" CONE	PLAIN YELLOW
03-770-5	BASE	10 LB
03-770-6	BASE	15 LB



CHANNELIZER DRUM


CHANNELIZER
DRUM
03-780-6HIG

BASE OPTIONS:



MOLDED RUBBER BASE



TIRE RING BASE



A CHANNELIZER DRUM 

Mfr. No.	Product Description	Specification
03-732-25#	CHANNELIZER BASE	25 LB RECYCLED RUBBER BASE, ROUND, SNAP-ON
03-732G	CHANNELIZER BASE	40 LB RECYCLED RUBBER BASE, ROUND SNAP-ON
03-750-TRG	CHANNELIZER BASE	22.5 LB RECYCLED TIRE RING BASE
03-780	CHANNELIZER DRUM	HDPE TOP ONLY, PLAIN
03-780-4EGG	CHANNELIZER DRUM	HDPE TOP ONLY, 4 ENGINEER GRADE 4" STRIPES, OWOW
03-780-6EGG	CHANNELIZER DRUM	HDPE TOP ONLY, 4 ENGINEER GRADE 6" STRIPES, OWOW
03-780-4FP	CHANNELIZER DRUM	HDPE TOP ONLY, 4 DIAMOND GRADE 4" STRIPES, OWOW
03-780-6FP	CHANNELIZER DRUM	HDPE TOP ONLY, 4 DIAMOND GRADE 6" STRIPES, OWOW
03-780-4HI	CHANNELIZER DRUM	HDPE TOP ONLY W/ 4" HI-INTENSITY STRIPES, OWOW
03-780-6HI	CHANNELIZER DRUM	HDPE TOP ONLY W/ 4" HI-INTENSITY STRIPES, OWOW
03-781	CHANNELIZER DRUM	LDPE TOP ONLY, PLAIN
03-781-4EG	CHANNELIZER DRUM	LDPE TOP ONLY, 4 ENGINEER GRADE 4" STRIPES, OWOW
03-781-6FP	CHANNELIZER DRUM	LDPE TOP ONLY, 4 DIAMOND GRADE 6" STRIPES, OWOW
03-781-4FP	CHANNELIZER DRUM	LDPE TOP ONLY, 4 DIAMOND GRADE 4" STRIPES, OWOW
03-781-6HI	CHANNELIZER DRUM	LDPE TOP ONLY, 4 HI PRIZ 6" STRIPES, OWOW
03-781-4HI	CHANNELIZER DRUM	LDPE TOP ONLY W/ 4" HI-INTENSITY STRIPES, OWOW
03-781-6HI	CHANNELIZER DRUM	LDPE TOP ONLY W/ (4) 6" HI-INTENSITY STRIPES, OWOW

* HIGH MOVING ITEM

LAMBA CONES & FLOOR STANDS



NEW!

A LAMBA CONES

25" and 36" yellow models. Available plain or imprinted with stock legends. International languages and styles. 25" Cone Dimensions: 10" base, 4-3/4" middle, 3-1/4" top. 36" Cone Dimensions: 12" base, 6" middle, 3-1/2" top. Custom imprinting available.

Mfr. No.	Product Description	Specification
03-600-12	25" YELLOW FLOOR CONES	PLAIN, 5/PACK
03-600-12CAU	25" YELLOW FLOOR CONES	CAUTION, 5/PACK
03-600-06	25" YELLOW FLOOR CONES	SAFETY FIRST, 5/PACK
03-600-12WF	25" YELLOW FLOOR CONES	WET FLOOR, 5/PACK
03-600-07	25" YELLOW FLOOR CONES	CUIDADO PISO MOJADO/WET FLOOR, 5/PACK
03-600-00	36" YELLOW FLOOR CONES	PLAIN, 5/PACK
03-600-11A	36" YELLOW FLOOR CONES	CAUTION, 5/PACK
03-600-02	36" YELLOW FLOOR CONES	DANGER PEOPLE WORKING ABOVE, 5/PACK
03-600-11	36" YELLOW FLOOR CONES	NO PARKING, 5/PACK
03-600-04	36" YELLOW FLOOR CONES	SAFETY FIRST, 5/PACK
03-600-08	36" YELLOW FLOOR CONES	WET FLOOR, 5/PACK
03-600-09	36" YELLOW FLOOR CONES	CUIDADO PISO MOJADO/WET FLOOR, 5/PACK
03-600-01	36" YELLOW FLOOR CONES	CUIDADO /SEGURIDAD AUTE TODO/SAFETY FIRST, 5/PACK
03-600-05	36" ORANGE FLOOR CONES	ORANGE CONE - WET FLOOR
03-600-09L	36" LIME FLOOR CONES	LIME WET FLOOR / PISO MOJADO

B 2' x 4' SAFETY FLOOR SIGNS

The LAMBA 2'x4' safety floor sign helps companies control their environment in an effort to reduce accidents. Featuring our LOCKIN' ARM technology for easy setup and extra stability. Four-sided caution messages display clear warnings from every angle. The 24" high plastic signs fold up quickly and store in spaces as narrow as 3". Custom printing available.

Mfr. No.	Product Description	Specification
03-600-33	PLAIN	6/PACK
03-600-34	CAUTION, WET FLOOR	6/PACK
03-600-35	WET FLOOR, WALK RIGHT/LEFT	6/PACK
03-600-36	WET FLOOR, CUIDADA PISO MOJADO	6/PACK
03-600-37	NO ENTRY, REST ROOM CLOSED	6/PACK
03-600-38	CAUTION, WATCH YOUR STEP	6/PACK
03-600-43	CAUTION	6/PACK
03-600-49	OUT OF SERVICE	6/PACK



A MESSAGE LABELS

Yellow 8" x 8" adhesive-backed vinyl for use on our lock-in signs.



Mfr. No.	Product Description	Specification
03-600-19	MESSAGE LABEL PLAIN (NO TEXT)	YELLOW 8X8 ADHESIVE BACKED VINYL
03-600-20	MESSAGE LABEL "SLIPPERY"	YELLOW 8X8 ADHESIVE BACKED VINYL
03-600-21	MESSAGE LABEL "WATCH YOUR STEP"	YELLOW 8X8 ADHESIVE BACKED VINYL
03-600-22	"REST ROOM CLOSED - NO ENTRY"	YELLOW 8X8 ADHESIVE BACKED VINYL
03-600-23	"WET FLOOR PLEASE WALK TO THE RIGHT"	YELLOW 8X8 ADHESIVE BACKED VINYL
03-600-24	"WET FLOOR PLEASE WALK TO THE LEFT"	YELLOW 8X8 ADHESIVE BACKED VINYL
03-600-25	"CAUTION - WET FLOOR"	YELLOW 8X8 ADHESIVE BACKED VINYL
03-600-26	"WET FLOOR" IN ENGLISH/SPANISH	YELLOW 8X8 ADHESIVE BACKED VINYL



B 2" YELLOW PLASTIC CHAIN

Helps to expand the effectiveness of the LAMBA cones or 2x4. Attach either slide link into the side of LAMBA cone or to the custom hooks on our 2x4 to create a safety system.

Mfr. No.	Product Description
03-600-27	20' CHAIN
03-600-28	100' CHAIN

C RING WEIGHTS - LAMBA ACCESSORY

Black metal. Slides over cone and rests on base. Weight for 25" cones inner dimensions: 8"x8". Weight for 36" cones inner dimensions: 10" x 10".

Mfr. No.	Product Description
03-600-29	CONE WEIGHT 7 LBS
03-600-30	CONE WEIGHT 9 LBS



D LOCK-IN SIGNS & LAMBA ACCESSORIES

8" x 8" plastic sign that can be placed in top of LAMBA cones to display message labels.

Mfr. No.	Product Description
03-600-31	RED SIGN

PACK N POP CONES



ALL OF OUR PACK AND POP OPTIONS COME PACKED IN CONVENIENT EASY-TO-CARRY PORTABLE BAGS.

A PACK AND POP COLLAPSIBLE CONE



Meets MUTCD standards. Internal cone light features 2 settings: steady and flashing. Operates on 2 'AAA' batteries (included) and endures 300 hours in flashing mode and 120 hours in steady mode. 18" and 28" Pack and Pop cones have 1 LED internal cone light bulb and 30" Pack and Pop Cones have 4 LED internal cone light bulbs. Constructed with orange waterproof nylon.

28" PACK AND POP FEATURES 1/2" TALL AND 3/4" WIDE BLACK FEET.



Mfr. No.	Product Description	Specification
03-501-01	28" PACK N POP, LT & FT ORANGE	OR PLASTIC BASE 6U 4L
03-501-02	28" PACK N POP, LT & FT ORANGE	OR PLASTIC BASE 6U 4L, (4/CS)
03-501-03	28" PACK N POP, LT & FT ORANGE	OR PLASTIC BASE 6U 4L (5/CS)
03-501-04	30" PACK N POP, 4 LED LIGHTS ORNG	BLACK RUBBER BASE 6U 4L
03-501-05	30" PACK N POP, 4 LED LIGHTS ORNG	BLACK RUBBER BASE 6U 4L (5/CS)
03-501-06	18" PACK N POP WITHOUT FEET ORNG	PLASTIC BASE (4/CS)

B REFLECTIVE COLLAPSIBLE CONE WITH LED LIGHT

Portable, collapsible, 28" reflective cone is ideal for hazardous areas, police departments, school zones, industrial plants and for use by emergency responders. Collapses to 2" height and easily stores under the seat or in the trunk. Provides quick and easy set-up and take-down. Heavy-duty, polyester cone construction is resistant to most chemicals. Durable base is manufactured of heavy duty ABS. 6" & 4" highly reflective collars (permanently attached) and LED safety light (removable) provide additional visibility of 850' at night. Usable temperature is -40° F to 130° F.

B
COLLAPSIBLE
CONE
03-500-80



Mfr. No.	Product Description	Specification
03-500-80	COLLAPSIBLE CONE W/LED LIGHT	28" REFLECTIVE
03-500-80-5	COLLAPSIBLE CONE W/LED LIGHT - 5 PK. - ORANGE/SILVER (5/CS)	28" REFLECTIVE
03-500-80KT	COLLAPSIBLE CONE W/OUT LED LIGHT - 5 PK. (5/CS)	28" REFLECTIVE



* HIGH MOVING ITEM

TRAFFIC CONES

A DW SERIES TRAFFIC CONE

18", 28", and 36" cones meet NCHRP-350 Certification and MUTCD standards. Wide-body design with rugged black base. Injection molded day glow orange PVC.

Mfr. No.	Product Description
03-500-09	DW CONE - 12"
03-500-05	DW CONE - 18"
03-500-07	DW CONE - 28"
03-500-18	DW CONE - 28" 10 LBS.
03-500-10	DW CONE - 28" W/ 6" UPPER 4" LOWER REFLECTIVE COLLARS
03-500-08	DW CONE - 36"
03-500-06	DW CONE - 36" 6"/4" COLLAR, RED/ORANGE*
03-500-19	DW CONE - 36" 12 LBS.
03-500-25	DW CONE - 36" 12 LBS. W/ 6" UPPER 4" LOWER FDOT
03-500-21	DW CONE - 18" W/ 6" UPPER COLLAR
03-500-24	DW CONE - 28" 10 LBS 6"/ 4" COLLAR
03-500-25	DW CONE - 36" 12 LBS 6"/ 4" COLLAR
03-500-27	DW CONE - 36" 12 LBS. FDOT



B W SERIES TRAFFIC CONE

18", 28", and 36" cones meet NCHRP-350 Certification and MUTCD standards. Injection molded, day glow orange PVC with white inner liner. One-piece, wide-body design with rugged orange base.

Mfr. No.	Product Description
03-500-090	W CONE - 12"
03-500-050	W CONE - 18"
03-500-070	W CONE - 28"
03-500-060	W CONE - 36"
03-500-100	W CONE - 28" W/ 6" UPPER 4" LOWER COLLAR
03-500-060	W CONE - 36" W/ 6" UPPER 4" LOWER COLLAR





C

REFLECTIVE COLLARS

NEW!

Collared cones come in 18", 28" and 36" cone sizes. Collar sizes are 6" upper and 4" lower. Stenciling available on all cones.

Mfr. No.	Product Description	Specification
03-502	REFLECTIVE CONE COLLAR	6" UPPER FOR 28" STANDARD CONE
03-503	REFLECTIVE CONE COLLAR	4" LOWER FOR 28" STANDARD CONE

D

W SERIES FLUORESCENT LIME TRAFFIC CONE

W Series, wide-body design. Flow molded, day glow fluorescent lime. Fluorescent color increases pedestrian and driver awareness.

Mfr. No.	Product Description
03-500-05LI	W CONE - 18" FLUORESCENT LIME
03-500-65	W CONE - 28" FLUORESCENT LIME
03-500-68	W CONE - 28" FLUORESCENT LIME W/ 6" UPPER 4" LOWER
03-500-08LI	W CONE - 36" FLUORESCENT LIME
03-500-06LI	W CONE - 36" FLUORESCENT LIME W/ 6" UPPER 4" LOWER
03-500-65B	W CONE - 28" FLUORESCENT LIME W/ BLACK BASE

D

W SERIES
FLUORESCENT



CUSTOM IMPRINTING
AVAILABLE!
SEE PRICE BOOK.

TRAFFIC CONE ACCESSORIES



A
CONE HOLDER
03-500-99

A CONE HOLDER

Ideal for vehicular use. Holds no more than (10) 18" cones or (5) 28" cones only. Mounting plate is 6.75" wide. Height of unit = 22" from bottom of mounting plate to top of holder. Hardware not included.

Mfr. No.	Product Description	Specification
03-500-99	TRAFFIC CONE HOLDER	...



B
CONE BAR
03-824CB

B RETRACTABLE CONE BAR

The Cortina Safety Products Retractable Cone Bar is designed to be used with any and all PVC traffic cones. The Retractable bar is extremely versatile for road and utility work sites, great for parking lots and pedestrian crossways, and many more areas that need a fast and unique barrier system.

Mfr. No.	Product Description	Specification
03-824CB	RETRACTABLE CONE BAR	ORANGE EXTENDS 5'-9'



C
CONE LIGHT
03-10-CLG

C CONE LIGHTS

Amber, Red and Blue lens with plastic handle. Stable flash - 65 flashes per minute with +/- 10%. Use 2pcs D-cell Alkaline batteries. The cone light is operated by CDS (or called Photocell) with dusk (on) and dawn (off) function. Easy contact is made by threading the lens to handle. LED life hours 20,000. With soft plastic handle and airtight center hole cone fit.



Mfr. No.	Product Description	Specification
03-10-CLA	CONE LIGHT D-CELL BATTERY	AMBER
03-10-CLR	CONE LIGHT D-CELL BATTERY	RED
03-10-CLB	CONE LIGHT D-CELL BATTERY	BLUE
03-10-CLG	CONELIGHT 6 VOLT BATTERY	AMBER
03-10-CLA	CONELIGHT W/ HANDLE	AMBER
03-10-CLB	CONELIGHT W/ HANDLE	BLUE
03-10-CLR	CONELIGHT W/ HANDLE	RED



C
CONE BAR BARRICADE
03-824CBKT

CONE BAR BARRICADE

The Cortina Safety Products Cone Bar Barricade is a quick set up ADA cone bar barrier system for use around man holes, sidewalk repair, crowd control, etc. It is extremely portable and easy to assemble and requires limited storage space.

Mfr. No.	Product Description	Specification
03-824CBKT	CONE BAR BARRICADE	ORANGE



D
BARRICONE
03-550-BRCR4

D BARRICONE

Mfr. No.	Product Description	Specification
03-550-BRCR4	4 FT. BARRICONE RAIL	YELLOW CAUTION W/ REFLECTIVE
03-550-BRP4	4 FT. BARRICONE RAIL	YELLOW PLAIN
03-550-BRCR	6 FT. BARRICONE RAIL	YELLOW CAUTION W/ REFLECTIVE
03-550-BRP	6 FT. BARRICONE RAIL	YELLOW PLAIN

E BARRICADE TAPE CLIPS

For attaching tape to traffic cones and posts. Fits all manufacturers traffic cones. Provides a quick, easy set up visual barrier around hazardous areas.

Mfr. No.	Product Description	Specification
03-500-BTC	BARRICADE TAPE CLIP	SOLD IN 5 PACKS ONLY



E
BARRICADE TAPE
CLIPS
03-500-BTC



F CONE CART

Heavy duty construction allows for carrying up to 500lbs. The cart's easy roll design makes working around tight spaces a breeze and saves time. It also reduces the potential for injury. Cones can be mixed and matched for easy transport. The wheels are heavy duty, long wearing and maintenance free.

Mfr. No.	Product Description
03-500-CCG	CONE CART

Attaches to all manufacturers cones

- *Durable UV resistant ABS Plastic*
- *Withstands wide range of temperature extremes*
- *Custom legends available.*

CALL FOR QUOTE

1 . 8 0 0 . 2 2 5 . 5 2 0 6



A CONE SIGN BLANKS

Injection molded one piece design, not cut or trimmed to size. Clean crisp edges, no flaking or splintering. Won't warp or bend. Excellent surface for adhesive application or screening. Longer life than aluminum. UV color protection package. A .125 thick high impact ABS resin. Excellent in extreme weather conditions rain, snow, sleet or hot weather conditions up to 200 degrees.

Mfr. No.	Product Description
13-03-550	ORANGE CONE SIGN BLANK
13-03-550-1	WHITE CONE SIGN BLANK
03-550-BL	ORANGE CONE SIGN BLANK WITH BLACK BORDER



A
SIGN BLANKS
03-650



B CONE SIGNS

Mfr. No.	Product Description	Specification
03-550-AKL	KEEP LEFT W/ ARROW SYMBOL	BLACK ON ORANGE*
03-550-AKLW	KEEP LEFT W/ ARROW SYMBOL	BLACK ON WHITE
03-550-AKR	KEEP RIGHT W/ ARROW SYMBOL	BLACK ON ORANGE*
03-550-AKRW	KEEP RIGHT W/ ARROW SYMBOL	BLACK ON WHITE
03-550-AL	ARROW SYMBOL - LEFT	BLACK ON ORANGE*
03-550-AR	ARROW SYMBOL - RIGHT	BLACK ON ORANGE
03-550-ARL	ARROW SYMBOL - DOUBLE	BLACK ON ORANGE
03-550-BL	BLANK WITH BORDER	BLACK ON WHITE
03-550-C	CAUTION	BLACK ON ORANGE
03-550-DET	DETOUR	BLACK ON ORANGE
03-550-DNE	DO NOT ENTER	WHITE ON RED
03-550-FWA	FORWARD ARROW POINTING UP	BLACK ON ORANGE
03-550-GCAF	GOLF CART ARROW FORWARD	BLACK ON WHITE
03-550-GCAL	GOLF CART ARROW LEFT	BLACK ON WHITE
03-550-GCAR	GOLF CART ARROW RIGHT	BLACK ON WHITE
03-550-H	HANDICAP SYMBOL	WHITE ON BLUE*
03-550-LC	LANE CLOSED	BLACK ON WHITE
03-550-LF	LOT FULL	BLACK ON ORANGE
03-550-MW	MEN WORKING	BLACK ON ORANGE
03-550-NES	ELECTIONEERING PROHIBITED AT THIS SITE	BLACK ON ORANGE
03-550-NP	NO PARKING	LOGO ON WHITE
03-550-NTT	NO THRU TRAFFIC	BLACK ON ORANGE
03-550-R	RESERVED	BLACK ON ORANGE
03-550-RC	ROAD CLOSED	BLACK ON ORANGE
03-550-RES	RESERVED (WHITE)	BLACK ON WHITE
03-550-S	SLOW	BLACK ON ORANGE
03-550-SC	SIDEWALK CLOSED	BLACK ON ORANGE
03-550-SSC	STREET CLOSED	BLACK ON WHITE
03-550-WA	WORKERS ABOVE	BLACK ON ORANGE
03-550-WAH	WORKERS AHEAD	BLACK ON ORANGE
03-550-WP	WET PAINT	BLACK ON ORANGE
03-550-2WA	REVERSIBLE ARROW SYMBOL	BLACK ON ORG. W/ NOTCH ON TOP & BOTTOM*
03-550-3WAR	REFLECTIVE, 2 WAY ARROW	BLACK ON ORANGE

* HIGH MOVING ITEM

SPORT CONES



A SPORT CONES

Sport cones are made from lightweight, durable injection-molded polyethylene. 18" height with a 12"x12" base. Ideal for amusement parks, schools, sporting events, parking lots and temporary traffic control. Special colors and stenciling available. (minimums required)

Mfr. No.	Product Description	Specification
03-500-30	SPORT CONE	18" BLACK
03-500-31	SPORT CONE	18" FLUORESCENT PINK
03-500-34	SPORT CONE	5" ORANGE
03-500-36	SPORT CONE	18" RED*
03-500-37	SPORT CONE	18" WHITE*
03-500-38	SPORT CONE	18" YELLOW*
03-500-39	SPORT CONE	18" BLUE*
03-500-40	SPORT CONE	18" GREEN*
03-500-41	SPORT CONE	18" FLUORESCENT LIME
03-500-42	SPORT CONE	18" FLUORESCENT ORANGE*



STOP / SLOW PADDLES

 STOP/SLOW
PADDLE
03-827P



A PADDLES

Paddles meet MUTCD requirements. Octagon-shaped paddles are available silk-screened or reflective with Engineer Grade or Hi-Intensity sheeting. Letter size: 8" for 24" paddles, 6" for 18" paddle. Handle sold separately. 81" High-Viz orange plastic handle.

18" x 18" silk-screened aluminum or ABS hand held, octagon paddles are ideal for school crossing guards, police and plant security guards. .080 aluminum with scratch resistant paint finish or extremely durable ABS material.

Mfr. No.	Product Description	Specification
03-822	PADDLE, STOP/SLOW PLASTIC	24" EGR SHEETING
03-822P	PADDLE, STOP/SLOW PLASTIC	24" EGR SHEETING W/ 81" PLASTIC HANDLE*
03-823	PADDLE, STOP/SLOW PLASTIC	24" HI SHEETING
03-823P	PADDLE, STOP/SLOW, PLASTIC	24" HI SHEETING W/ 81" PLASTIC HANDLE*
03-826	PADDLE, STOP/SLOW PLASTIC	24" DIAMOND GRADE
03-826P	PADDLE, STOP/SLOW PLASTIC	24" DIAMOND GRADE W/ 81" PLASTIC HANDLE*
03-827	PADDLE, STOP/SLOW PLASTIC	24" SILK-SCREENED
03-827P	PADDLE, STOP/SLOW PLASTIC	24" SILK-SCREENED W/ 81" PLASTIC HANDLE*
03-835	PADDLE, STOP/SLOW, PLASTIC	18" EGR SHEETING
03-836	PADDLE, STOP/SLOW, PLASTIC	18" HI SHEETING
03-837	PADDLE, STOP/SLOW, PLASTIC	18" DIAMOND GRADE SHEETING
03-838	PADDLE, STOP/SLOW, PLASTIC	18" SILK-SCREENED
03-851	PADDLE, STOP/SLOW, PLASTIC	18" SILK-SCREENED W/ 9" POLYGRIP HANDLE*
03-852	PADDLE, STOP/SLOW, PLASTIC	18" EGR SHEETING W/ 9" POLYGRIP HANDLE
03-853	PADDLE, STOP/SLOW, PLASTIC	18" HI SHEETING W/ 9" POLYGRIP HANDLE
03-854	PADDLE, STOP/STOP, PLASTIC	18" SILK SCREENED W/ 9" POLYGRIP HANDLE
03-855	PADDLE, STOP/STOP, PLASTIC	18" EGR W/ 9" POLYGRIP HANDLE
03-856	PADDLE, STOP/STOP, PLASTIC	18" HI-I SHEETING W/ 9" POLYGRIP HANDLE
03-650	18" STOP SLOW PADDLE BLANK	ABS MATERIAL
03-601	24" STOP SLOW PADDLE BLANK	ABS MATERIAL
13-01-01	BOLT KIT FOR PADDLE	

* HIGH MOVING ITEM

 STOP/SLOW
PADDLE
03-827P

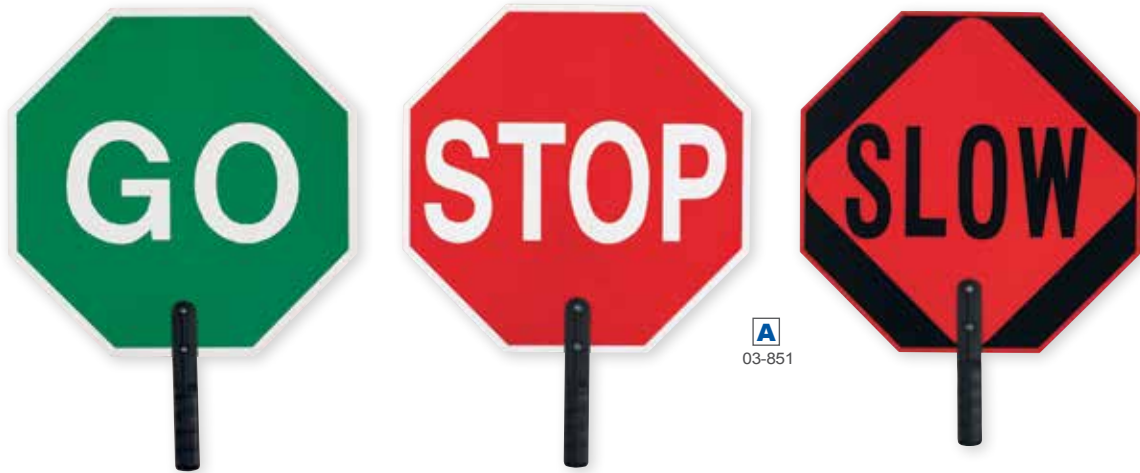


B ALUMINUM PADDLES

 03-601

Meets MUTCD requirements. Octagon shape. Paddles available silk screened (non-reflective) or reflective in Engineer, High-Intensity or Diamond Grade sheeting.

Mfr. No.	Product Description	Specification
03-856	STOP / STOP 18"	18" HI-INTENSITY W/ 9" POLYGRIP HANDLE
03-867	STOP / SLOW 24"	24" NON-REFLECTIVE W/ 6' WOOD HANDLE


 03-851

C NON-REFLECTIVE PADDLES (ALUMINUM)

Aluminum, silk-screened octagon-shaped paddles in 18" or 24" size. 0.080 gauge baked aluminum enamel. Available with 6" aluminum, 6" wooden handles. Ideal for school crossing guards, flaggers and plant security guards. Wood handle: 6'.

Mfr. No.	Product Description	Specification
03-820	18" ALUMINUM SIGN ONLY STOP / GO	ALUMINUM SIGN ONLY
03-830	18" ALUMINUM SIGN ONLY STOP / SLOW	ALUMINUM SIGN ONLY
03-831	18" ALUMINUM SIGN ONLY STOP / STOP	ALUMINUM SIGN ONLY
03-863	18" ALUMINUM SIGN ASSEMBLY KITS S/SLOW	18" ALUMINUM HANDLE
03-864	18" ALUMINUM SIGN ASSEMBLY KITS S/SLOW	18" WOOD HANDLE
03-868	24" STOP & SLOW PADDLE HI-INTENSITY	6' WOOD HANDLE
03-870	24" STOP & SLOW PADDLE W/ EGR SHEETING	6' WOOD HANDLE

D PADDLE HANDLES

Mfr. No.	Product Description	Specification
03-850	9" POLYGRIP HANDLE ONLY	FOR 24" STOP/SLOW PADDLES
03-842-HD	NEW HEAVY DUTY HANDLE, PLASTIC 81"	FOR 24" STOP/SLOW PADDLES

* HIGH MOVING ITEM



ROLL-UP SIGNS

BW Mesh, Marathon, Super Bright and 3M Diamond Grade sign materials qualify as fluorescent, retro-reflective roll-up signs per MUTCD specifications. All Roll-ups included ribsets and are ready for use.

Lexan pockets available upon request at an additional cost.



A BW MESH NON-REFLECTIVE ROLL-UP SIGN

Meets NCHRP-350 Certification and MUTCD standards. Manufactured from tightly woven polyester fabric.

Specially formulated PVC coated polyester fiber woven and thermoset competitively priced for a roll-up panel.

Features vinyl-coated nylon pocket design. Silk-screened legends and borders.

Mfr. No. 36"	Product Desc	Specification	Mfr. No. 48"	Product Desc	Specification
07-800-3000	36" ROLL-UP SIGN	MEN WORKING	07-800-4000	48" ROLL-UP SIGN	MEN WORKING
07-800-3001	36" ROLL-UP SIGN	FLAGGER AHEAD	07-800-4001	48" ROLL-UP SIGN	FLAGGER AHEAD
07-800-3002	36" ROLL-UP SIGN	MEN WORKING SYMBOL	07-800-4002	48" ROLL-UP SIGN	MEN WORKING SYMBOL
07-800-3003	36" ROLL-UP SIGN	CONSTRUCTION AHEAD	07-800-4003	48" ROLL-UP SIGN	CONSTRUCTION AHEAD
07-800-3004	36" ROLL-UP SIGN	ROAD CONSTRUCTION AHEAD	07-800-4004	48" ROLL-UP SIGN	ROAD CONSTRUCTION AHEAD
07-800-3005	36" ROLL-UP SIGN	WORK AREA AHEAD	07-800-4005	48" ROLL-UP SIGN	WORK AREA AHEAD
07-800-3006	36" ROLL-UP SIGN	FLAGGER AHEAD SYMBOL	07-800-4006	48" ROLL-UP SIGN	FLAGGER AHEAD SYMBOL
07-800-3007	36" ROLL-UP SIGN	ROAD WORK AHEAD	07-800-4007	48" ROLL-UP SIGN	ROAD WORK AHEAD
07-800-3008	36" ROLL-UP SIGN	SURVEY CREW	07-800-4008	48" ROLL-UP SIGN	SURVEY CREW
07-800-3009	36" ROLL-UP SIGN	SURVEY CREW AHEAD	07-800-4009	48" ROLL-UP SIGN	SURVEY CREW AHEAD
07-800-3010	36" ROLL-UP SIGN	UTILITY WORK AHEAD	07-800-4010	48" ROLL-UP SIGN	UTILITY WORK AHEAD
07-800-3012	36" ROLL-UP SIGN	MERGE RIGHT SYMBOL	07-800-4011	48" ROLL-UP SIGN	ROAD CLOSED AHEAD
07-800-3013	36" ROLL-UP SIGN	BE PREPARED TO STOP	07-800-4012	48" ROLL-UP SIGN	MERGE RIGHT SYMBOL
07-800-3014	36" ROLL-UP SIGN	DETOUR AHEAD	07-800-4013	48" ROLL-UP SIGN	MERGE LEFT SYMBOL
07-800-3015	36" ROLL-UP SIGN	MOWING AHEAD	07-800-4014	48" ROLL-UP SIGN	BE PREPARED TO STOP
07-800-3016	36" ROLL-UP SIGN	ONE LANE ROAD AHEAD	07-800-4015	48" ROLL-UP SIGN	DETOUR AHEAD
07-800-3017	36" ROLL-UP SIGN	RT LANE CLOSED AHEAD	07-800-4017	48" ROLL-UP SIGN	ONE LANE ROAD AHEAD
07-800-3018	36" ROLL-UP SIGN	ROAD CLOSED AHEAD	07-800-4018	48" ROLL-UP SIGN	RT LANE CLOSED AHEAD
07-800-3019	36" ROLL-UP SIGN	RT SHOULDER CLOSED	07-800-4019	48" ROLL-UP SIGN	RT SHOULDER CLOSED
07-800-3020	36" ROLL-UP SIGN	SLOW	07-800-4020	48" ROLL-UP SIGN	SHOULDER WORK AHEAD
07-800-3021	36" ROLL-UP SIGN	WORKERS AHEAD	07-800-4021	48" ROLL-UP SIGN	SLOW
07-800-3022	36" ROLL-UP SIGN	MERGE LEFT SYMBOL	07-800-4022	48" ROLL-UP SIGN	WORKERS AHEAD
			07-800-4023	48" ROLL-UP SIGN	MERGE RIGHT



B SUPER BRIGHT REFLEXITE REFLECTIVE ROLL-UP SIGN

Meets NCHRP-350 Certification and MUTCD standards. Fluorescent orange color provides maximum visibility.

Fluorescent orange micro-prismatic sheeting increases legibility and provides higher reflective performance.

Features vinyl-coated nylon pocket design. Economical alternative. All Roll-ups included ribsets and are ready for use.

Lexan pockets available upon request at an additional cost.

Mfr. No. 36"	Product Desc	Specification	Mfr. No. 48"	Product Desc	Specification
07-800-3023	36" ROLL-UP SIGN	FLAGGER AHEAD	07-800-4024	48" ROLL-UP SIGN	FLAGGER AHEAD
07-800-3024	36" ROLL-UP SIGN	FLAGGER SYMBOL	07-800-4025	48" ROLL-UP SIGN	FLAGGER SYMBOL
07-800-3025	36" ROLL-UP SIGN	MEN WORKING	07-800-4027	48" ROLL-UP SIGN	MEN WORKING SYMBOL
07-800-3026	36" ROLL-UP SIGN	MEN WORKING SYMBOL	07-800-4028	48" ROLL-UP SIGN	BE PREPARED TO STOP
07-800-3027	36" ROLL-UP SIGN	MERGE RIGHT	07-800-4029	48" ROLL-UP SIGN	TRUCKS ENTERING HWY
07-800-3028	36" ROLL-UP SIGN	CONSTRUCTION AHEAD	07-800-4030	48" ROLL-UP SIGN	CONSTRUCTION AHEAD
07-800-3029	36" ROLL-UP SIGN	TRUCKS ENTERING HWY	07-800-4031	48" ROLL-UP SIGN	DETOUR AHEAD
07-800-3030	36" ROLL-UP SIGN	DETOUR AHEAD	07-800-4032	48" ROLL-UP SIGN	ONE LANE ROAD AHEAD
07-800-3031	36" ROLL-UP SIGN	MOWING AHEAD	07-800-4033	48" ROLL-UP SIGN	RT LANE CLOSED AHEAD
07-800-3032	36" ROLL-UP SIGN	ONE LANE ROAD AHEAD	07-800-4034	48" ROLL-UP SIGN	WORK AREA AHEAD
07-800-3033	36" ROLL-UP SIGN	RT LANE CLOSED AHEAD	07-800-4035	48" ROLL-UP SIGN	ROAD CLOSED AHEAD
07-800-3034	36" ROLL-UP SIGN	WORK AREA AHEAD	07-800-4036	48" ROLL-UP SIGN	ROAD CONSTRUCTION AHEAD
07-800-3035	36" ROLL-UP SIGN	ROAD CLOSED AHEAD	07-800-4037	48" ROLL-UP SIGN	ROAD WORK AHEAD
07-800-3036	36" ROLL-UP SIGN	ROAD CONSTRUCTION AHEAD	07-800-4038	48" ROLL-UP SIGN	SHOULDER WORK AHEAD
07-800-3037	36" ROLL-UP SIGN	ROAD WORK AHEAD	07-800-4039	48" ROLL-UP SIGN	SLOW
07-800-3038	36" ROLL-UP SIGN	RT SHOULDER CLOSED	07-800-4040	48" ROLL-UP SIGN	SURVEY CREW
07-800-3039	36" ROLL-UP SIGN	SHOULDER WORK AHEAD	07-800-4041	48" ROLL-UP SIGN	SURVEY CREW AHEAD
07-800-3041	36" ROLL-UP SIGN	SURVEY CREW AHEAD	07-800-4042	48" ROLL-UP SIGN	WORKERS AHEAD
07-800-3042	36" ROLL-UP SIGN	WORKERS AHEAD	07-800-4043	48" ROLL-UP SIGN	MERGE RT SYMBOL
07-800-3044	36" ROLL-UP SIGN	MERGE RT SYMBOL	07-800-4044	48" ROLL-UP SIGN	MERGE RIGHT
07-800-3045	36" ROLL-UP SIGN	MERGE LFT SYMBOL	07-800-4045	48" ROLL-UP SIGN	MERGE LFT SYMBOL
07-800-3046	36" ROLL-UP SIGN	UTILITY WORK AHEAD	07-800-4046	48" ROLL-UP SIGN	UTILITY WORK AHEAD
			07-800-4047	48" ROLL-UP SIGN	FRESH OIL

C SUPER BRIGHT REFLEXITE REFLECTIVE ROLL-UP SIGN OVERLAYS

Mfr. No. 36"	Product Desc	Specification	Mfr. No. 48"	Product Desc	Specification
07-800-3085	36" OVERLAYS	LEFT	07-800-4087	48" OVERLAYS	LEFT
07-800-3086	36" OVERLAYS	CENTER	07-800-4088	48" OVERLAYS	CENTER
07-800-3087	36" OVERLAYS	BLANK	07-800-4089	48" OVERLAYS	BLANK
07-800-3088	36" OVERLAYS	DIRECTIONAL ARROW	07-800-4090	48" OVERLAYS	DIRECTIONAL ARROW
07-800-3089	36" OVERLAYS	500 FT.	07-8004091	48" OVERLAYS	500 FT.
07-800-3090	36" OVERLAYS	1000 FT.	07-800-4092	48" OVERLAYS	1000 FT.
07-800-3091	36" OVERLAYS	1500 FT.	07-800-4093	48" OVERLAYS	1500 FT.

D DIAMOND GRADE 3M REFLECTIVE ROLL-UP SIGN

Meets NCHRP-350 Certification and MUTCD standards. Fluorescent orange color provides maximum visibility.

Polycarbonate material. Vinyl pockets standard. All Roll-ups included ribsets and are ready for use. Lexan pockets available upon request at an additional cost.

Mfr. No. 36"	Product Desc	Specification	Mfr. No. 48"	Product Desc	Specification
07-800-3047	36" ROLL-UP SIGN	FLAGGER AHEAD	07-800-4048	48" ROLL-UP SIGN	FLAGGER AHEAD
07-800-3048	36" ROLL-UP SIGN	FLAGGER SYMBOL	07-800-4049	48" ROLL-UP SIGN	FLAGGER SYMBOL
07-800-3049	36" ROLL-UP SIGN	MEN WORKING	07-800-4050	48" ROLL-UP SIGN	MEN WORKING
07-800-3050	36" ROLL-UP SIGN	BE PREPARED TO STOP	07-800-4052	48" ROLL-UP SIGN	BE PREPARED TO STOP
07-800-3051	36" ROLL-UP SIGN	DETOUR AHEAD	07-800-4053	48" ROLL-UP SIGN	ONE LANE ROAD AHEAD
07-800-3052	36" ROLL-UP SIGN	ONE LANE ROAD AHEAD	07-800-4054	48" ROLL-UP SIGN	RT LANE CLOSED AHEAD
07-800-3053	36" ROLL-UP SIGN	RT LANE CLOSED AHEAD	07-800-4055	48" ROLL-UP SIGN	CONSTRUCTION AHEAD
07-800-3054	36" ROLL-UP SIGN	WORK AREA AHEAD	07-800-4056	48" ROLL-UP SIGN	ROAD CLOSED AHEAD
07-800-3055	36" ROLL-UP SIGN	ROAD CLOSED AHEAD	07-800-4058	48" ROLL-UP SIGN	SHOULDER WORK AHEAD
07-800-3056	36" ROLL-UP SIGN	SHOULDER WORK AHEAD	07-800-4061	48" ROLL-UP SIGN	MERGE RT SYMBOL
07-800-3057	36" ROLL-UP SIGN	WORKERS AHEAD	07-800-4WAA	48" ROLL-UP SIGN	WORK AREA AHEAD
07-800-3058	36" ROLL-UP SIGN	MERGE RT SYMBOL			
07-800-3059	36" ROLL-UP SIGN	UTILITY WORK AHEAD			

E DIAMOND GRADE 3M REFLECTIVE ROLL-UP SIGN OVERLAYS

Mfr. No. 36"	Product Desc	Specification	Mfr. No. 48"	Product Desc	Specification
07-800-3092	36" OVERLAYS	LEFT	07-800-4094	48" OVERLAYS	LEFT
07-800-3093	36" OVERLAYS	BLANK	07-800-4095	48" OVERLAYS	CENTER
07-800-3094	36" OVERLAYS	DIRECTIONAL ARROW	07-800-4096	48" OVERLAYS	ONE
07-800-3095	36" OVERLAYS	500 FT.	07-800-4097	48" OVERLAYS	BLANK
07-800-3096	36" OVERLAYS	1000 FT.	07-800-4098	48" OVERLAYS	DIRECTIONAL ARROW
07-800-3097	36" OVERLAYS	1 MILE	07-800-4099	48" OVERLAYS	500 FT.
			07-800-4100	48" OVERLAYS	1500 FT.
			07-800-4101	48" OVERLAYS	1/2 MILE
			07-800-4102	48" OVERLAYS	1 MILE

F FIBERGLASS RIBS (USE FOR ALL SIGNS)

Mfr. No. 36"	Product Desc
03-800-2054	RIBSET FOR 36" ROLL UPS
03-800-2055	RIBSET FOR 48" ROLL UPS

F MARATHON REFLEXITE REFLECTIVE ROLL-UP SIGN

Meets NCHRP-350 Certification and MUTCD standards. 36" or 48" lightweight roll-up signs that utilize Marathon Fluorescence, designed with technology to increase sign detection, especially in low-light conditions such as dawn, dusk and overcast days. Designed with micro-prismatic reflective sheeting bonded to a heavy-duty fiber-reinforced vinyl material. This construction will not delaminate and provides outstanding durability, legibility and long sign life. Easier to transport and only weigh 8 lbs. Sign will not wrinkle or crinkle and will maintain its legibility after multiple uses. Purchase with confidence: Marathon signs offer and unprecedented 3 YEAR WARRANTY on the material! Vinyl pockets standard, Lexan pockets available. All signs include ribsets.

Mfr. No. 36"	Product Desc	Specification	Mfr. No. 48"	Product Desc	Specification
07-800-3061	36" ROLL-UP SIGN	UTILITY WORK AHEAD	07-800-4064	48" ROLL-UP SIGN	UTILITY WORK AHEAD
07-800-3062	36" ROLL-UP SIGN	SHOULDER WORK AHEAD	07-800-4065	48" ROLL-UP SIGN	SHOULDER WORK AHEAD
07-800-3063	36" ROLL-UP SIGN	FRESH OIL	07-800-4066	48" ROLL-UP SIGN	BE PREPARED TO STOP
07-800-3064	36" ROLL-UP SIGN	FLAGGER SYMBOL	07-800-4067	48" ROLL-UP SIGN	FLAGGER SYMBOL
07-800-3065	36" ROLL-UP SIGN	MEN WORKING	07-800-4068	48" ROLL-UP SIGN	MEN WORKING
07-800-3066	36" ROLL-UP SIGN	RT LANE CLOSED AHEAD	07-800-4069	48" ROLL-UP SIGN	RT LANE CLOSED AHEAD
07-800-3067	36" ROLL-UP SIGN	DETOUR AHEAD	07-800-4070	48" ROLL-UP SIGN	DETOUR AHEAD
07-800-3068	36" ROLL-UP SIGN	FLAGGER AHEAD	07-800-4071	48" ROLL-UP SIGN	FLAGGER AHEAD
07-800-3069	36" ROLL-UP SIGN	CONSTRUCTION AHEAD	07-800-4072	48" ROLL-UP SIGN	CONSTRUCTION AHEAD
07-800-3070	36" ROLL-UP SIGN	MERGE RIGHT	07-800-4073	48" ROLL-UP SIGN	MERGE RIGHT
07-800-3073	36" ROLL-UP SIGN	MOWING AHEAD	07-800-4075	48" ROLL-UP SIGN	MERGE LEFT SYMBOL
07-800-3074	36" ROLL-UP SIGN	ONE LANE ROAD AHEAD	07-800-4077	48" ROLL-UP SIGN	MOWING AHEAD
07-800-3075	36" ROLL-UP SIGN	ROAD CLOSED AHEAD	07-800-4078	48" ROLL-UP SIGN	1 LANE ROAD AHEAD
07-800-3076	36" ROLL-UP SIGN	ROAD CONSTRUCTION AHEAD	07-800-4079	48" ROLL-UP SIGN	RT SHOULDER CLOSED
07-800-3077	36" ROLL-UP SIGN	SIGNAL WORK AHEAD	07-800-4080	48" ROLL-UP SIGN	ROAD CLOSED AHEAD
07-800-3078	36" ROLL-UP SIGN	SLOW	07-800-4081	48" ROLL-UP SIGN	ROAD CONSTRUCTION AHEAD
07-800-3079	36" ROLL-UP SIGN	SURVEY CREW	07-800-4082	48" ROLL-UP SIGN	ROAD WORK AHEAD
07-800-3081	36" ROLL-UP SIGN	WORK AREA AHEAD	07-800-4083	48" ROLL-UP SIGN	SLOW
07-800-3082	36" ROLL-UP SIGN	WORKERS AHEAD	07-800-4084	48" ROLL-UP SIGN	SURVEY CREW AHEAD
07-800-3083	36" ROLL-UP SIGN	MERGE LEFT	07-800-4085	48" ROLL-UP SIGN	WORK AREA AHEAD
07-800-3084	36" ROLL-UP SIGN	ROAD WORK AHEAD	07-800-4086	48" ROLL-UP SIGN	WORKERS AHEAD
07-800-3MTEH	36" ROLL-UP SIGN	TRUCKS ENTERING HWY	07-800-4MMA	48" ROLL-UP SIGN	MOWING AHEAD
			07-800-4MTEH	48" ROLL-UP SIGN	TRUCKS ENTERING HWY

G MARATHON REFLEXITE REFLECTIVE ROLL-UP SIGN OVERLAYS

Mfr. No. 36"	Product Desc	Specification	Mfr. No. 48"	Product Desc	Specification
07-800-3098	36" OVERLAYS	500 FT.	07-800-4103	48" OVERLAYS	500 FT.
07-800-3099	36" OVERLAYS	1000 FT.	07-800-4104	48" OVERLAYS	1000 FT.
07-800-3100	36" OVERLAYS	1500 FT.	07-800-4105	48" OVERLAYS	1500 FT.
07-800-3101	36" OVERLAYS	1/2 MILE	07-800-4106	48" OVERLAYS	1/2 MILE
07-800-3102	36" OVERLAYS	1 MILE	07-800-4107	48" OVERLAYS	1 MILE
07-800-3103	36" OVERLAYS	BLANK	07-800-4108	48" OVERLAYS	BLANK
07-800-3104	36" OVERLAYS	CENTER	07-800-4109	48" OVERLAYS	CENTER
07-800-3105	36" OVERLAYS	DIRECTIONAL ARROW	07-800-4110	48" OVERLAYS	LEFT
07-800-3106	36" OVERLAYS	LEFT	07-800-4111	48" OVERLAYS	ONE
07-800-3107	36" OVERLAYS	ONE	07-800-4112	48" OVERLAYS	DIRECTIONAL ARROW

SIGN STANDS

Cortina is proud to offer a full range of sign stands to meet your work zone signage needs. Our Quadra Flex VI sign stands, constructed of steel bases and aluminum mast and legs, deliver the quality you have come to rely on.



A QUADRA FLEX™ VI



Our Quadra Flex product line allows deployment of roll-up signs at various heights between 14" and 6' from ground surface. The entire line is designed to withstand strong wind gusts. Models also feature telescopic legs with easy to use kick-release.

- Steel base and spring components specially coated to withstand 500 hours of salt spray.
- Aircraft aluminum alloy legs and uprights, with anti-skid rubber leg caps.
- Adjustable legs for stability on curbs or uneven terrain
- Dual-spring base with strong initial tension resists twisting and turning of sign in high wind gusts
- Kick-release legs simplify set-up
- One person deployment without tools



A
QUADRA FLEX VI
07-801-1

A
QUADRA FLEX VI
07-805-1

Mfr. No.	Product Description	Specifications
07-801-1	QF-VI FOR 36" & 48" ROLL UP SIGN	HOLDS SIGN 14" OFF GROUND
07-805-1	QF-VI FOR 36" & 48" ROLL UP SIGN	HOLDS SIGN 5' OFF GROUND
07-809	RIDGED BRACKETS	CONVERTS QF-VI TO HOLD RIDGID SIGNS
07-824-2	QF-VR	HOLDS RIGID SIGNS 3' OFF GROUND

B QUADRA FLEX™ VI - SINGLE SPRING

Our Quadraflex Single Spring product line combines all products of the QuadraFlex line with added light weight features in a Single Spring Stand.

Mfr. No.	Product Description	Specifications
07-802-1	QF-VI BASE ONLY	--
07-804-1	QF-VI STAND FOR 36" ROLL UP SIGN	--
07-804-2	QFVI STAND FOR 48" ROLL UP SIGN	--
07-804-3	QFVI STAND W/ TELESCOPING MAST	ACCOMODATES 36" / 48" SIGN
07-806	QFVI MAST ONLY	FOR 36" SIGN
07-807	QFVI MAST ONLY	FOR 48" SIGN
07-808	QFVI TELESCOPING MAST	FOR 36" / 48" SIGN



C
ECONO TRIPOD
STANDS
07-819-1

C
ECONO TRIPOD
STANDS
07-816-1

C QFV-W & QLV-W SCREWLOCK SIGN STANDS

Screw-lock sign stands include bracket and feature telescoping legs. For use with roll-up signs only.

Mfr. No.	Product Description	Specifications
07-819-1	HOLDS 36" & 48" ROLL UP SIGNS	NO SPRING QL-V
07-816-1	HOLDS 36" & 48" ROLL UP SIGNS	SINGLE SPRING QF-V





D QUADRA FLEX EMERGENCY RESPONSE KIT

Complete compact sign stand system for emergency response.

Mfr. No.	Product Description	Specifications
07-810	36" SIGN AND STAND SYSTEM	SPECIFY LEGEND
07-811	48" SIGN AND STAND SYSTEM	SPECIFY LEGEND

E VEHICLE MOUNT SIGN HOLDER

Add another level of protection to your advance warning signage and traffic incident management with the vehicle sign mount bracket. Mounts easily to grab bar, enhances safe positioning, increases conspicuity and visibility. Sign deploys quickly and safely. Stores in place, ready for immediate release.

Mfr. No.	Product Description
07-827	VEHICLE MOUNT BRACKET



F VEHICLE MOUNT HITCH ADAPTER FOR ROLL UP SIGNS

Fits into any 2" square hitch receiver. Sign deploys quickly and safely, sign can be rotated 45° in either direction, telescoping upright, release button for easy dismantling. Provides effective communication to upstream vehicles. Communicates direction of the transition.

Mfr. No.	Product Description
07-826	VEHICLE MOUNT BRACKET

G ECONO TRIPOD & T-STAND

Complete compact sign stand system for emergency response.

Mfr. No.	Product Description	Specifications
07-822	TRIPOD STAND - QLV-W	FOR ROLL UP & RIDGID SIGNS
07-823	T-STAND - QFV-W	FOR ROLL UP SIGNS



QUICK DEPLOY / BATONS



C
STOP SIGN
03-747QD

A QUICK DEPLOY STOP SIGN

System is a quick set up, effective traffic control system designed to be used in industrial plants, 4 way intersections, parking lots, schools, airports, hospitals, intersections where stop light is inoperable due to natural disasters, etc. The highly visible system provides 4 way stop visibility. The QDtm System is easy to set up and use. Each kit includes 1 white delineator post, 1-15lb recycled rubber base, and 2-18" ABS plastic STOP signs. Lightweight, easy to set up and move.

Mfr. No.	Product Description
03-730	RUBBER BASE 10#
03-731	RUBBER BASE 15#
03-747QD	NON-REFLECTIVE
03-747QDHI15	18" HIGH INTENSITY RFL
03-747QDDG15	18" FLUORESCENT ORANGE PRISMATIC



B
BATON
03-300, 301, 303

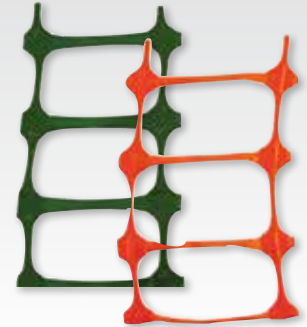
B ELECTRONIC SAFETY BATON

Pulsating high intensity LED lights. Water and impact resistant construction.

Mfr. No.	Product Description	Specification
03-300	LED BATON 12" C-CELL	STEADY ON / SLOW FLASH / FAST FLASH
03-301	LED BATON W/ BELT CLIP 9" C-CELL	STEADY ON / FAST FLASH
03-303	LED BATON W/ BELT CLIP 12" D-CELL	STEADY ON / FAST FLASH

* HIGH MOVING ITEM

FENCING



A GENERAL-PURPOSE 12 LB FENCING

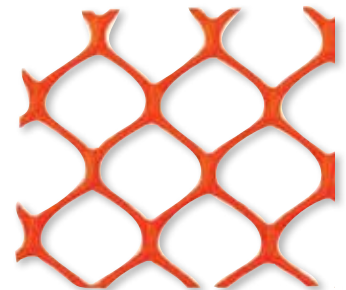
Mono-oriented safety fence with horizontal openings. Tensile strength - MD: 240 lbs/ft TD: 90 lbs/ft. Heavier and more visible than general purpose 9#.

Mfr. No.	Product Description	Specification
03-904	12 LBS / HORIZONTAL	4X100 ORANGE, 48 ROLLS / PALLET
03-903	12 LBS / HORIZONTAL	4X100 GREEN, 48 ROLLS / PALLET

B MID-GRADE DIAMOND FENCING

Diamond mesh safety fence with smooth top and bottom. Heavier and more visible than light-duty diamond safety fence. Tensile strength - MD: 160 lbs / ft TD: 100 lbs / ft.

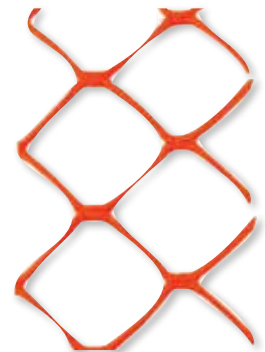
Mfr. No.	Product Description	Specification
03-906-MGO	14 LBS DIAMOND	4X50 ORANGE, 30 ROLLS / PALLET
03-907-5MGO	23 LBS DIAMOND	5X50 ORANGE, 30 ROLLS / PALLET



C HEAVY-DUTY DIAMOND FENCING

Diamond mesh safety fence with smooth top and bottom. Strongest and heaviest diamond mesh fence we offer. Tensile strength - MD: 180 lbs/ft TD: 175 lbs/ft.

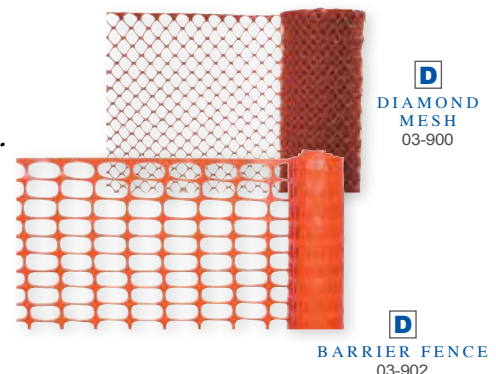
Mfr. No.	Product Description	Specification
03-905-HDC	32 LBS DIAMOND	4X100 ORANGE, 48 ROLLS / PALLET



D FENCING

Orange polyethylene. Highly visible. UV stabilized. Rugged and reusable.

Mfr. No.	Product Description	Specification
03-900	PLASTIC FENCE DIAMOND MESH	ORANGE 4' X 50'*
03-901	PLASTIC FENCE DIAMOND MESH	ORANGE 4' X 100'
03-902	LIGHTWEIGHT BARRIER FENCE	ORANGE 4' X 100'*



D
DIAMOND MESH
03-900

D
BARRIER FENCE
03-902

* HIGH MOVING ITEM

A WARNING FLAGS

Reinforced heavy-duty fluorescent red-orange vinyl or heavy-duty mesh/vinyl flags. Available in 18" x 18" or 24" x 24" sizes. 3/4" diameter hardwood dowel available in 24", 30" and 36" lengths. Standard pack of 50 each.

Mfr. No.	Product Description	Specification
03-229-3404	VINYL FLAG - ORANGE	18" W/ 30" WOODEN DOWEL
03-229-3405	VINYL FLAG	18" W/ 36" WOODEN DOWEL
03-229-3406	MESH FLAG	18" W/ 24" WOODEN DOWEL
03-229-3407	MESH FLAG	18" W/ 30" WOODEN DOWEL
03-229-3408	VINYL FLAG	24" W/ 30" WOODEN DOWEL
03-229-3409	MESH FLAG	24" W/ 30" WOODEN DOWEL
03-229-3410	MESH FLAG	24" W/ 36" WOODEN DOWEL
03-229-3415	THROW AWAY WARNING FLAG	16" X 16" 100 PER BUNDLE
03-229-3417	VINYL FLAG 18"	W/ 24" WOODEN DOWEL
03-229-3418	VINYL FLAG 24"	W/ 36" WOODEN DOWEL
03-229-3423	AIRPORT FLAG	36" X 36" ORANGE/WHITE NYLON
03-229-3424	VINYL FLAG	18" W/ 24" WOODEN DOWEL, BRIGHT RED
03-229-3440	VINYL FLAG, 24"	W/ 36" WOODEN DOWEL, BRIGHT RED
03-229-3472	THROW AWAY WARNING FLAG	18" X 18" 100 PER BUNDLE



B PENNANTS

9" x 12" on a 100' or 60' string. Tensile strength - 107lbs. Available in orange, yellow, red, alternating red/white, orange/white, or multi-colored. Standard pack of 25 each.

Mfr. No.	Product Description	Specification
03-400	PENNANT VINYL	100' RED
03-400-60	PENNANT VINYL	60' RED
03-401	PENNANT VINYL	100' RED/WHITE
03-401-60	PENNANT VINYL	60' RED/WHITE
03-402	PENNANT VINYL	100' ORANGE
03-402-60	PENNANT VINYL	60' ORANGE
03-403	PENNANT VINYL	100' MULTI-COLORED
03-403-60	PENNANT VINYL	60' MULTI-COLORED
03-404	PENNANT VINYL	100' ORANGE / WHITE
03-404-60	PENNANT VINYL	60' ORANGE/WHITE
03-405	PENNANT VINYL	100' YELLOW
03-405-60	PENNANT VINYL	60' YELLOW
03-406	PENNANT VINYL	60' YELLOW W/ ALT LEGENDS
03-406-60	PENNANT VINYL	60' YELLOW / BLACK
03-407	PENNANT VINYL	60' RED DANGER



C WINDSOCKS NEW!

International orange color with UV inhibitors. High quality PVC over nylon material for increased durability. Double stitched at all seams. Weather proof and durable for a wide variety of applications. Frames are corrosion resistant aluminum that mounts on a standard 1.25" outside diameter pipe. Windsock mounts quickly to frame via lock ties and pre-installed brass grommets.



Mfr. No.	Product Description	Specification
03-WS-3KT	WINDSOCK W/ HARDWARE	10" OPENING X 3'
03-WS-4KT	WINDSOCK W/ HARDWARE	18" OPENING X 4'
03-WS-8KT	WINDSOCK W/ HARDWARE	18" OPENING X 8'
03-WS-55KT	WINDSOCK W/ HARDWARE	13" OPENING X 4'7"
03-WS-3	WINDSOCK ONLY	3'
03-WS-4	WINDSOCK ONLY	4'
03-WS-8	WINDSOCK ONLY	8'

BANNERS / REFLECTORS

A
BANNER
03-11-000



A BANNER

18" x 96" with 5' rope ties in each corner. Wide load / Oversize load combination: front and back. Bright yellow reinforced vinyl material with black letters. Letter size = 12".

Mfr. No.	Product Description	Specification
03-11-000	HWY. BANNER	WIDE LOAD / OVERSIZE LOAD BANNER COMBO

D
BULK REFLECTORS



B BULK REFLECTORS

All sizes and colors available in 100 piece packs.

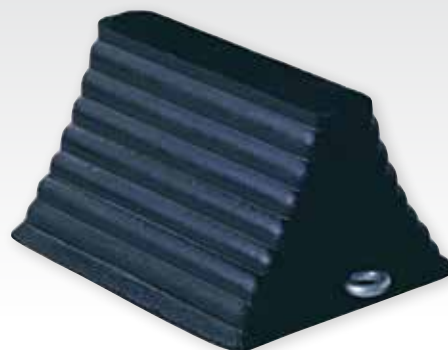
Mfr. No.	Product Description	Specification
13-099-02	OBLONG REFLECTOR	DUAL MOUNT, RED-BULK
13-099-06	OBLONG REFLECTOR	DUAL MOUNT, AMBER-BULK
13-099-09	OBLONG REFLECTOR	DUAL MOUNT, BLUE-BULK
13-099-12	2 1/8" DIA. REFLECTOR S/ADH	BLUE-BULK
13-099-13	2 1/8" DIA. REFLECTOR S/ADH	AMBER-BULK
13-099-21	2 1/8" DIA. REFLECTOR S/ADH	RED-BULK
13-099-25	2 1/8" DIA. REFLECTOR S/ADH	CLEAR-BULK
13-099-31	3 1/8" DIA. REFLECTOR S/ADH	RED-BULK
13-099-32	3 3/8" DIA. REFLECTOR	CTR. HOLE MOUNT, RED-BULK
13-099-34	3 1/8" DIA. REFLECTOR S/ADH.	AMBER-BULK
13-099-35	3 3/8" DIA. REFLECTOR	CTR. HOLE MOUNT, AMBER-BULK
13-099-37	3 1/8" DIA. REFLECTOR S/ADH	BLUE-BULK
13-099-38	3 3/8" DIA. REFLECTOR	CTR. HOLE MOUNT, BLUE-BULK
13-099-40	3 1/8" DIA. REFLECTOR S/ADH	CLEAR-BULK
13-099-41	3 3/8" DIA. REFLECTOR	CTR. HOLE MOUNT, CLEAR-BULK

WHEEL CHOCKS • PARKING BLOCKS SPEED BUMPS • STROBE LIGHTS

A WHEEL CHOCKS

Most popular design rubber wheel chock affords maximum durability and skid protection. Especially under adverse weather conditions. Zinc-plated eyebolt. Weighs 9 lbs.

Mfr. No.	Product Description	Specification
2048C	12' 10# JACK CHAIN	...
2048WC	HEAVY DUTY	WHEEL CHOCK
2048WCC	WHEEL CHOCK	W/12' CHAIN



B PARKING BLOCKS

Maintenance free. Recycled rubber will not warp, crack or rot. Resistant to oil, UV and moisture. Stands up in wide temperature extremes. Painted yellow stripes are reflective. Easily installed by one person. 36" block requires 2 spikes, 48" block requires 3 spikes and 72" block requires 4 spikes. Spikes are sold separately.

Mfr. No.	Product Description	Specification
2049PB	4' PARKING BLOCK	STRIPED YELLOW, RUBBER
2050PB	6' PARKING BLOCK	STRIPED YELLOW, RUBBER
2057PB	3' PARKING BLOCK	STRIPED YELLOW, RUBBER
2053S	14" SPIKE, PAINTED	STEEL SPIKE



C SPEED BUMPS

Maintenance free. Extremely durable recycled rubber will not warp, crack or rot. Withstands wide temperature extremes. Painted with polyurethane yellow reflective paint. Built in cats eye reflectors for added visibility. Two 1.25" underside channels allow for cables and provide drainage. 48" speed bump requires 3 spikes, 72" speed bump requires 4 spikes. Good for weights up to 6000 lbs.

Mfr. No.	Product Description	Specification
2054SB	4' SPEED BUMP	STRIPED YELLOW/RUBBER
2055SB	6' SPEED BUMP	STRIPED YELLOW/RUBBER
2056SB	3' SPEED BUMP	STRIPED YELLOW/RUBBER
2053S	14" SPIKE, PAINTED	STEEL SPIKE



D LOW PROFILE TEAR DROP LIGHT

Whether you are up fitting a single unit or an entire fleet, we offer the industries highest quality and dependable line of amber lights; all of which meet or exceed applicable SAE requirements.

Mfr. No.	Product Description	Specification
22-56525	AMBER, ROTATING HALOGEN TEAR DROP	12V MAG MOUNT
22-56526	RED, ROTATING HALOGEN TEAR DROP	12V MAG MOUNT
22-56527	BLUE, ROTATING HALOGEN TEAR DROP	12V MAG MOUNT



WARNING LIGHTS

A PULSATOR LED

Fourteen selectable “strobing” flash patterns, LED technology for zero maintenance lighting, no bulbs or strobe tubes to replace, multi-voltage, 12-24 VDC, Class 2, Five-year LED warranty.

Mfr. No.	Product Description	Specification
22-56530	TALL, PERMANENT MOUNT	AMBER
22-56531	TALL, SUCTION CUP MAGNET MOUNT	AMBER



B FIREBOLT LED

Fourteen selectable “strobing” flash patterns, Polycarbonate dome and base, multi-voltage, 12-24 VDC, Class 2, Five-year LED warranty.

Mfr. No.	Product Description	Specification
22-56532	MAGNET MOUNT	AMBER

C PULSATOR 451 LED

Fourteen selectable “strobing” flash patterns, LED technology for zero maintenance lighting, no bulbs or strobe tubes to replace, multi-voltage, 12-24 VDC, Class 2, Five-year LED warranty.

Mfr. No.	Product Description	Specification
22-56533	SHORT, PERMANENT MOUNT	AMBER
22-56534	SHORT, SUCTION CUP MAGNET MOUNT	AMBER



D SENTRY

95 FPM, Large parabolic reflector and 55-2att halogen bulb produce an attention-getting 80,000 candelas per flash, rugged, polycarbonate housing features twist-off dome for easy maintenance, Class 1, Five-year LED warranty.

Mfr. No.	Product Description	Specification
22-56535	12 VDC MAGNET MOUNT	AMBER

E ULTRA STAR LED

Fourteen selectable “strobing” flash patterns, longer dwell time to enhance visibility at a distance, industry standard mounting for quick and easy retrofits, Class 1, Five-year LED warranty.

Mfr. No.	Product Description	Specification
22-56536	12-24 VDC MAGNET MOUNT	AMBER



D VISIBEAM II

High-power spotlight for superior work area illumination, graduated start for pinpoint light beam placement, continuous 360° horizontal and 140° vertical adjustment, FCC approved, three year warranty.

Mfr. No.	Product Description	Specification
22-56537	12 VDC SURFACE MOUNT	100W

E HIGHLIGHTER LED ECONOMY

High-output Solaris LED reflector technology, ROC (Reliable Onboard Circuitry) reduces potential failure points found in a typical lighting system, low profile; only 2.6" tall, Class 1, Five-year LED warranty.

Mfr. No.

22-56540
22-56541

Product Description

SUCTION CUP MAGNET MOUNT
PERMANENT MOUNT

Specification

AMBER
AMBER

**F MICROPULSE 3**

Twelve selectable flash patterns, single/multi-unit synchronization, low profile design; 3.4" (L) x 1.1" (H) x 0.7" (D), Class 2, three-year LED warranty.

Mfr. No.

22-56542

Product Description

SURFACE MOUNT, 12-14 VDC

Specification

3 LED, AMBER/CLEAR LENS

G LATITUDE

High-output Solaris LED reflector technology, ROC (Reliable Onboard Circuitry) reduces potential failure points found in a typical lighting system, ten flash patterns, plus one test pattern, polycarbonate, moisture resistant housing, Class 1, Five-year LED warranty.

Mfr. No.

22-56543

Product Description

8 HEAD 31.8"

Specification

FLASHING

**H MICROPULSE 6**

Nineteen selectable flash patterns, single/multi-unit synchronization, low profile design; 5.0" (L) x 1.1" (H) x 0.7" (D), Class 1, three-year LED warranty.

Mfr. No.

22-56544

Product Description

SURFACE MOUNT, 12-14 VDC

Specification

6 LED, AMBER/AMBER/CLEAR LENS

I LATITUDE SIGNAL MASTER

High-output Solaris LED reflector technology, ROC (Reliable Onboard Circuitry) reduces potential failure points found in a typical lighting system, each model includes left, right, center-out warnings, Signal Mastger economy controller included, Class 1, Five-year LED warranty.

Mfr. No.

22-56545

Product Description

8 HEAD 31.8"

Specification

SIGNAL MASTER

J IN-LINE CORNER LED SYSTEM

Nineteen selectable flash patterns, multi-unit synchronization, low profile design; maintenance free, three-year LED warranty.

Mfr. No.

22-56546

Product Description

LED HEAD IN-LINE FLASHER

Specification

2 LED, CLEAR/CLEAR

BARGARD COVERS

A BARGARD PROTECTOR COVERS

Fits rebar #3-9, 3/8" to 7/8" diameter. Metal reinforced. Safety orange color provides visibility.

Mfr. No.	Product Description	Specification
97-1810	CAL-OSHA ORANGE REBAR CAP	3.5"W X 3.5"H, 100/PACK



B A-5 BARGARD COVERS

Fits rebar 3/8" to 3/4" diameter. Also fits inside 1" ID pipe.

Mfr. No.	Product Description	Specification
97-1811	A-5 LIME REBAR CAP	2.25"W X 2.5"H, 100/PACK



C A-10 BARGARD COVERS

Fits rebar 3/8" to 1-1/4" diameter. Also fits inside 1-3/4" ID pipe.

Mfr. No.	Product Description	Specification
97-1812-1	A-10 LIME REBAR CAP	2.5"W X 3"H, 100/PACK



D A-20 BARGARD COVER

Fits rebar 1" to 2-1/4" diameter. Also fits inside 1-3/4" ID pipe.

Mfr. No.	Product Description	Specification
97-1813	A-20 LIME REBAR CAP	2.75"W X 3.5"H, 100/PACK
97-1814	A-20 WHITE REBAR CAP	2.75"W X 3.5"H, 100/PACK





www.cortinaco.com

email: workzone@cortinaco.com

10706 WEST GRAND AVENUE
FRANKLIN PARK, IL 60131

P H O N E :

8 0 0 - 2 2 5 - 5 2 0 6

8 4 7 - 4 5 5 - 2 8 0 0

FAX: 847-451-7247

DISTRIBUTION:

United States

FRANKLIN PARK, IL 60131
MARTINSBURG, WV 25402

Canada

ST. THOMAS, ONTARIO
PHONE: 519-631-2900

© COPYRIGHT 2015 CORTINA SAFETY PRODUCTS GROUP

