

PRODUCT INFORMATION PACKET



Model No: 970.600C
Catalog No: 970.600
..1/8HP..3000RPM.56D.IP44.12V...S1.40C.1,0SF.B14.970.600C.....COMMERCIAL DUTY.....
Metric Motors



Regal and Leeson are trademarks of Regal Beloit Corporation or one of its affiliated companies.
©2018 Regal Beloit Corporation, All Rights Reserved. MC017097E





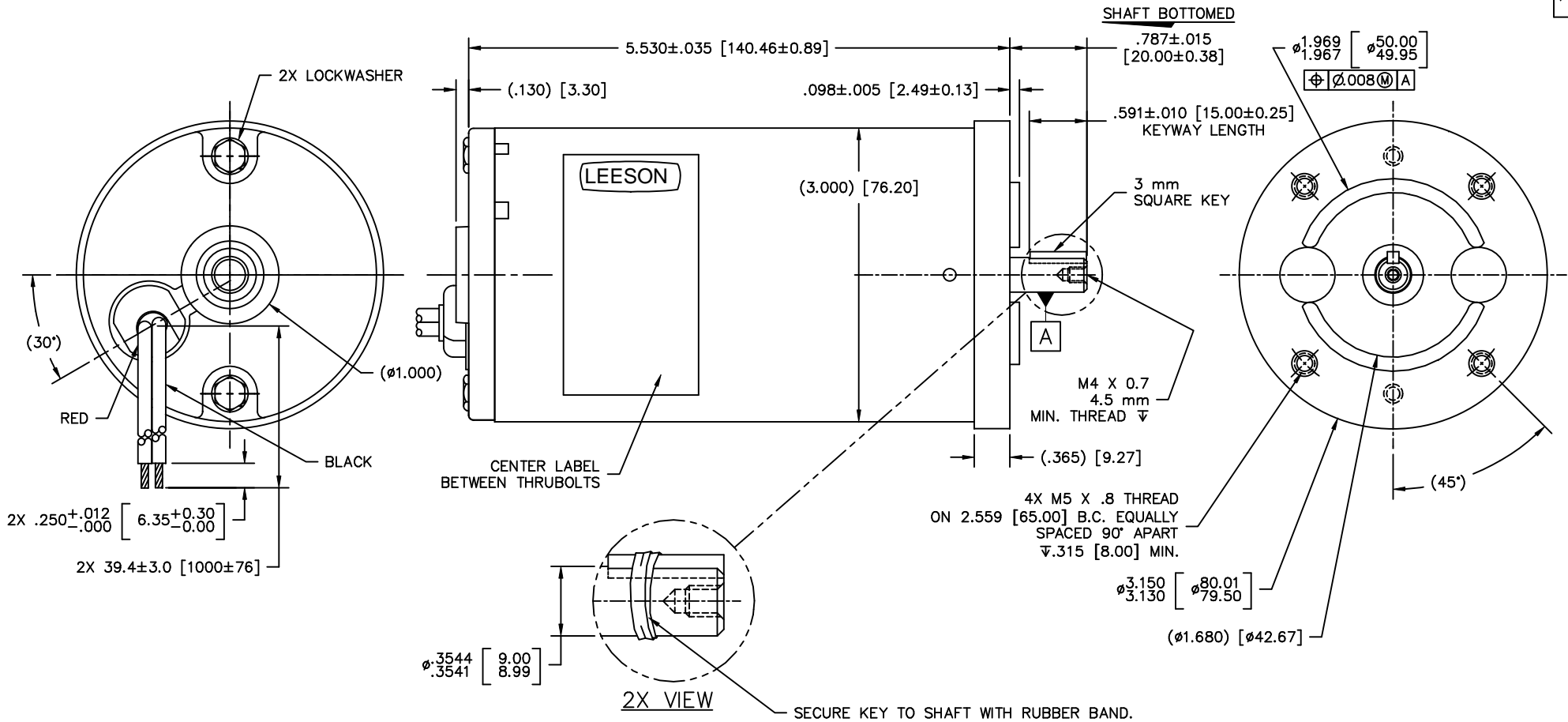
Nameplate Specifications

Output KW	0.10 kW	Voltage	12 V
Current	12.0 A	Speed	3000 rpm
Service Factor	1	Efficiency	71.4 %
Duty	S1	Insulation Class	A
Frame	56D	Enclosure	IP44
Overload Protector	No	Ambient Temperature	40 °C
UL	Recognized	CSA	Y
CE	N		

Technical Specifications

Rotation	Reversible	Mounting	B14
Overall Length	6.31 in	Frame Length	4.91 in
Shaft Diameter	0.375 in	Shaft Extension	0.787 in
Outline Drawing	970600OL	Connection Diagram	970600FI

This is an uncontrolled document once printed or downloaded and is subject to change without notice. Date Created: 10/15/2018



- NOTES:**
1. ROTATION: RED POSITIVE CCWSE; REVERSIBLE
 2. LEADS: 14 AWG
 3. END PLAY: .005-.030
 4. HIPOT: 1250 VAC FOR ONE SECOND, BOTH LEADS TO CASE
 5. VOLTAGE: 12 VDC
 6. INSULATION: CLASS A 105°C
 7. BEARING SYSTEM: SLEEVE BOTH ENDS
 8. LOAD POINT: 45 ozin @ 2900-3200 RPM

				TOLERANCES UNLESS OTHERWISE SPECIFIED		LEESON ELECTRIC CORPORATION TRU-TORQ DIVISION 201 N. MISSOURI AVE. SEDALIA, MO 65301 U.S.A. ELECTRIC MOTORS, GEARMOTORS AND DRIVES		
003	DELETED "KELVIN"	1297	JMU	08.30.00	DECIMALS		DRAWN DCR 11/24/98	
002	REVISED LOAD POINT DATA PER LATEST TEST RESULTS	1049	JMU	07.12.00				
001	UPDATED TO SHOW FRONT CASTING	1013	AD	6/29/00	.00	±.01	TITLE	
B	REVISE LABEL & LEAD LENGTH; ADD KEY; REV. NOTE 8.	8975	WM	5/7/99	.000	±.005	CH'K'D.	
A	RELEASE	8821	DCR	12/2/98	.0000	±.0005	APPR.	
REV	DISCRIPTION	ECRN	BY	DATE	FRACTIONAL	±1/64	SCALE 1 : 1	
THIS DRAWING IN DESIGN AND DETAIL IS OUR PROPERTY AND MUST NOT BE USED EXCEPT IN CONNECTION WITH OUR WORK ALL RIGHTS OF DESIGN AND INVENTION ARE RESERVED					ANGLES	±1/2"	P/C	
					INCH/MM		M/F	
							SIZE	DRAWING NO.
							B	970.6000L


1. HIPOT @ 1250 VOLTS FOR ONE SECOND, BOTH LEADS TO CASE
 2. RED LEAD POS (+)
 - BLACK LEAD NEG (-)
 3. RUN IN @ 12 VDC, 1.90 MAX AMPS, NO LOAD
 4. TORQUE THRU BOLTS TO 25-30 IN. LBS.
- } CCWSE

CHECKS TO OUTLINE DRAWING

- A. SHAFT EXTENSION AND FEATURES
- B. LEAD LENGTH & STRIP
- C. END PLAY
- D. SHAFT ROTATION
- E. LABEL POSITION & DATE CODE
- F. ALL HOLES TAPPED PER OUTLINE DRAWING

PERFORMANCE SPECIFICATIONS

TORQUE	SPEED	MAX AMPS
20 OZ. IN.	3150-3500	6.0
45 OZ. IN.	2900-3200	12.0
70 OZ. IN.	2750-3050	17.8

			TOLERANCES UNLESS SPECIFIED		 ELECTRIC MOTORS GEARMOTORS AND DRIVES	DRAWN	ESS 4/18/00	
			DEC.	INCHES		CHK		
			.X	±.1		APPD		
03	DELETED "KELVIN"	JMU 8/30/00	.XX	±.01	TITLE	SCALE	1=1	
02	UPDATED PERF. SPECS.	JMU 7/12/00	.XXX	±.005		REF		
01	UPDATED TO EF005.B STANDARD, 25-30 WAS 20-25	ESS 4/18/00	.XXXX	±.0005	MAT'L.	FMF	970.600	
NO.	REVISION	BY & DATE	CHK	ANG	±1/2'	FINISH	PREV	
THIS DRAWING IN DESIGN AND DETAIL IS OUR PROPERTY AND MUST NOT BE USED EXCEPT IN CONNECTION WITH OUR WORK ALL RIGHTS OF DESIGN AND INVENTION ARE RESERVED THIS IS AN ELECTRONICALLY GENERATED DOCUMENT - DO NOT SCALE THIS PRINT			RFP	CAD FILE 970600FI		SIZE	DRAWING NO.	REV.
			DIST			A	970.600FI	03