

# PRODUCT INFORMATION PACKET



Model No: C6C28FB27F

Catalog No: 113918.00

3/4HP..55kW.2850RPM.56.IP54.110/220V.1PH.50HZ.CONT.NOT.40C.1SF.RIGID.50 HERTZ.C6C28FB27F  
50 Hz



Regal and Leeson are trademarks of Regal Beloit Corporation or one of its affiliated companies.

©2018 Regal Beloit Corporation, All Rights Reserved. MC017097E



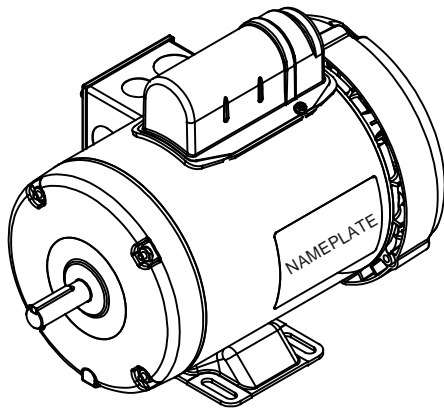
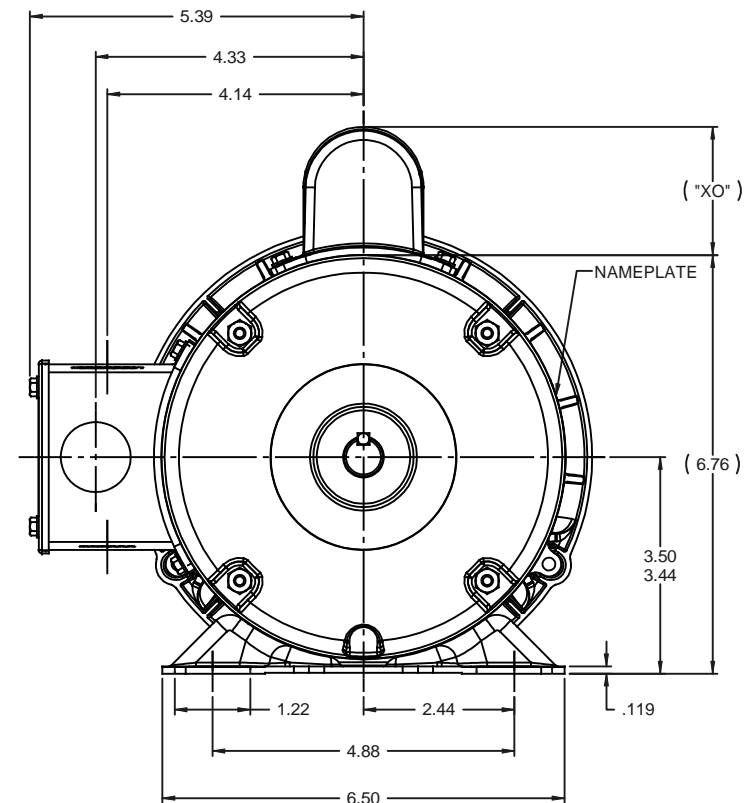
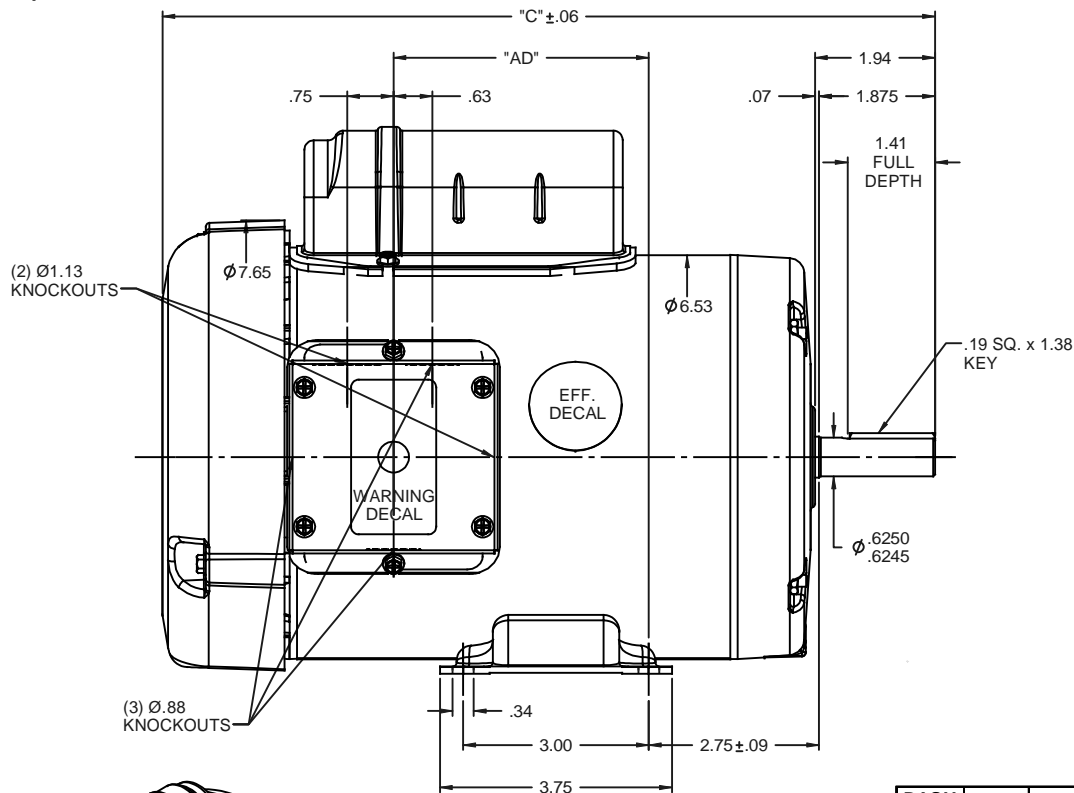


## Nameplate Specifications

Output HP	0.75 Hp	Output KW	0.56 kW
Frequency	50 Hz	Voltage	110/220 V
Current	11.2/5.6 A	Speed	2850 rpm
Service Factor	1	Phase	1
Efficiency	70 %	Duty	Continuous
Insulation Class	B	Design Code	N
KVA Code	K	Frame	56
Enclosure	Totally Enclosed Fan Cooled	Overload Protector	No
Ambient Temperature	40 °C	Drive End Bearing Size	6203
Opp Drive End Bearing Size	6203	UL	Recognized
CSA	Y	CE	Y
IP Code	54		

## Technical Specifications

Electrical Type	Capacitor Start Induction Run	Starting Method	Across The Line
Poles	2	Rotation	Selective Counterclockwise
Mounting	Rigid base	Motor Orientation	HORIZONTAL
Drive End Bearing	BALL	Opp Drive End Bearing	BALL
Frame Material	Rolled Steel	Shaft Type	NEMA 56
Overall Length	11.48 in	Frame Length	6.00 in
Shaft Diameter	0.625 in	Shaft Extension	1.88 in
Assembly/Box Mounting	F1 ONLY		
Outline Drawing	028797-600B	Connection Diagram	005390.01

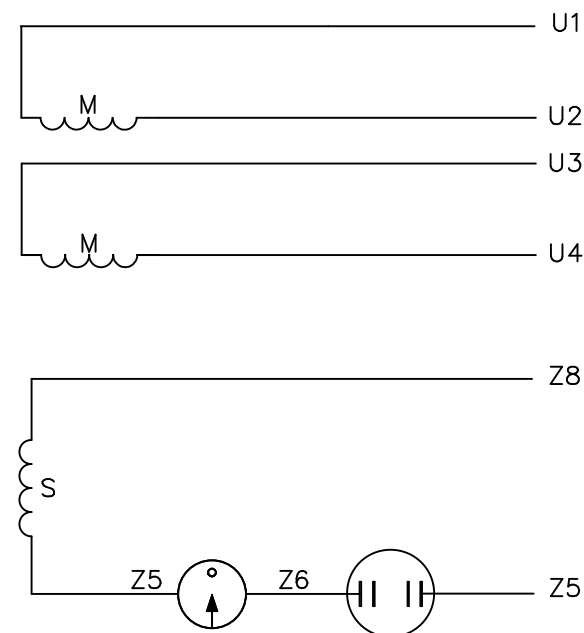
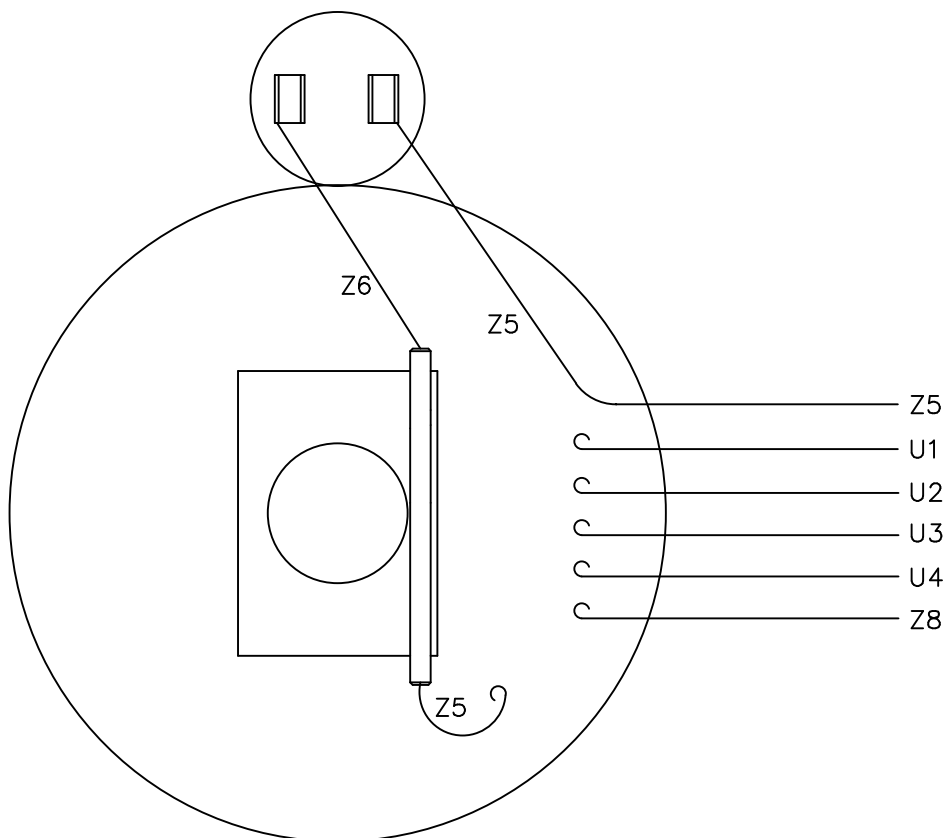


DASH NO.	"C"	"AD"	CAP DASH	"XO"
500	10.48	2.13		
550	10.98	2.63		
600	11.48	3.13		
650	11.98	3.63		
700	12.48	4.13	A	1.61
750	12.98	4.63	B	2.08
			C	2.32


NOTES:  
1) GASKETS THROUGHOUT

		TOLERANCES UNLESS SPECIFIED		LEESON		ELECTRIC MOTORS GEARMOTORS AND DRIVES		DRAWN KMM 09/18/07	
		DEC INCHES						CHK	
		X $\pm .1$						APPR	
		XX $\pm .03$		TITLE OUTLINE - 56 FRAME				SCALE 1:2	
		XXX $\pm .005$		TEFC - RIGID				REF 028612	
01		ADDED ISOMETRIC VIEW AS PER ISAAC #08-4017		GRB 9/5/2008		MATL		FMF 110094.00	
NO		REVISION		BY & DATE		CHK ANG $\pm 1/2^\circ$		PAGE 1 OF 1	
		THIRD ANGLE PROJECTION		RFP		FINISH GENERAL PURPOSE		REV	
				NETWORK FILE NAME		PREV		DRAWING NO	
						SIZE		028797	
						B		01	

VIEW FROM OUTSIDE OF MOTOR AT SWITCH END.



	ROTATION FACING LEAD END	L1	L2	JOIN
HIGH VOLT	C.C.W.	U1	U4 Z5	U2,U3 Z8
	C.W.	U1	U4 Z8	U2,U3 Z5
LOW VOLT	C.C.W.	U1,U3 Z8	U2,U4 Z5	---
	C.W.	U1,U3 Z5	U2,U4 Z8	---

				TOLERANCES UNLESS SPECIFIED		 ELECTRIC MOTORS GEARMOTORS AND DRIVES		DRAWN RSK 09/09/96		
				DEC.	INCHES			CHK		
				.X	±.1			APPD		
				.XX	±.01	TITLE EXTERNAL WIRING DIAGRAM TYPE "C" W/O PROTECTOR	SCALE	1=1		
				.XXX	±.005		REF	005005-01		
				.XXXX	±.0005		MAT'L.	DECAL - 080642		
NO.	REVISION	BY & DATE	CHK	ANG	±1/2"	FINISH	LEESON CANADA	FMF	114964.00	
								PREV		
THIS DRAWING IN DESIGN AND DETAIL IS OUR PROPERTY AND MUST NOT BE USED EXCEPT IN CONNECTION WITH OUR WORK ALL RIGHTS OF DESIGN AND INVENTION ARE RESERVED THIS IS AN ELECTRONICALLY GENERATED DOCUMENT - DO NOT SCALE THIS PRINT			RFP		CAD FILE		00539001	SIZE	DRAWING NO.	REV
			DIST					A	005390-01	



# LEESON ELECTRIC CORPORATION

## TYPICAL PERFORMANCE CURVE for AC MOTOR

Model No 113918.00Catalog No 113918.00

Curve at

220

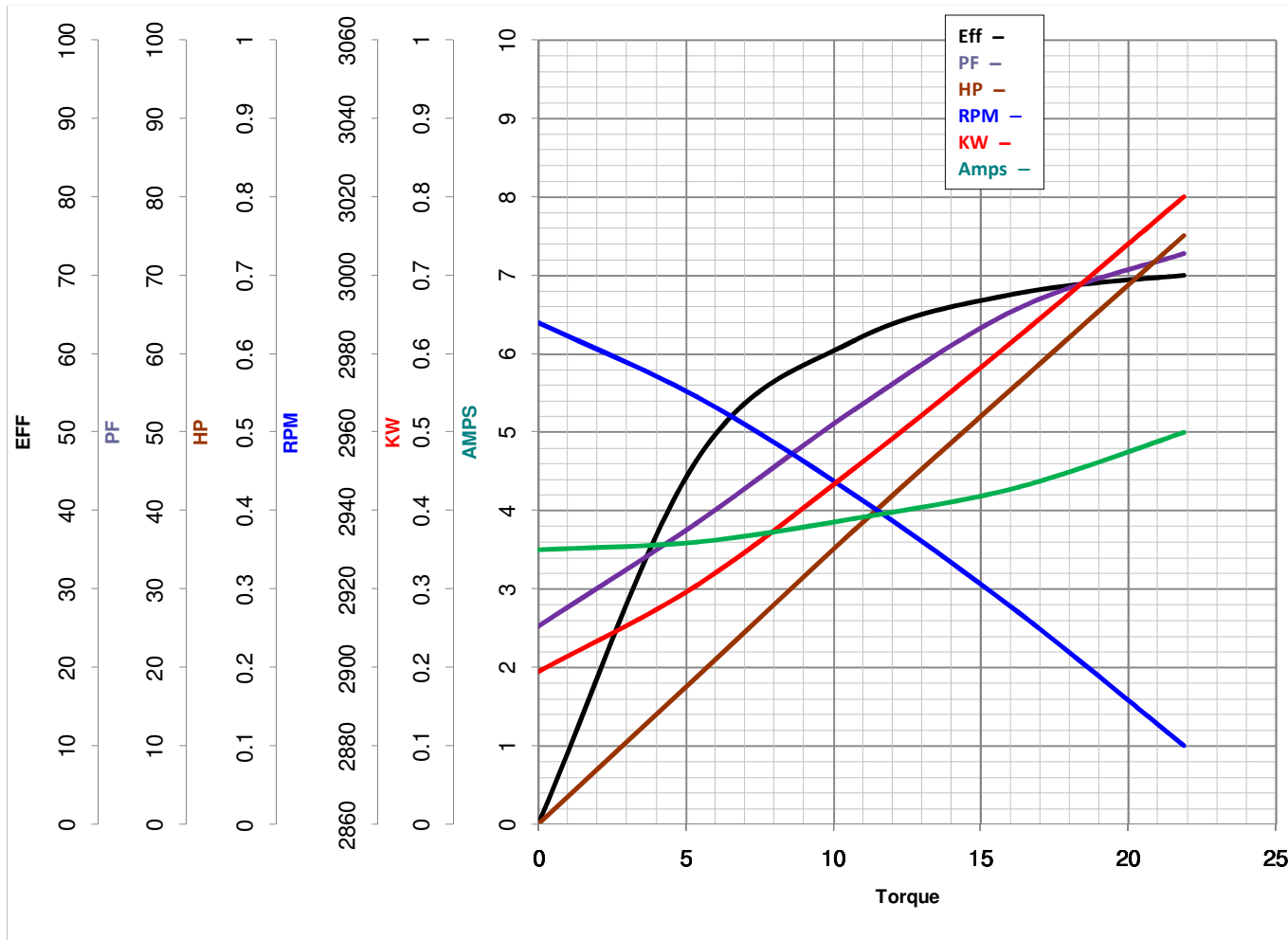
Volts

HP 0.76PHASE 150

HZ

VOLTS 110/2200.75

HP

HZ 50RPM 2850

Torque in Oz.Ft

FL TORQUE 21.9 Oz.FtBD TORQUE 58.4 Oz.FtLR TORQUE 63.4 Oz.Ft

WINDING C632227-5

FL AMPS 11.2/5.6PU TORQUE 52.5 Oz.FtLR AMPS 26.8

Date 3/27/2018