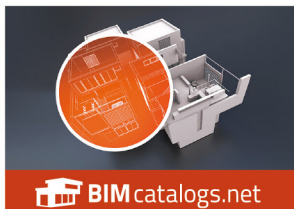


## 3D PDF DATASHEET



Create Your Individual 3D PDF Datasheet



Learn How to Create Your Mechanical Product Catalog



Learn How to Create Your BIM Product Catalog



Reduce Your Costs in Engineering and Purchasing



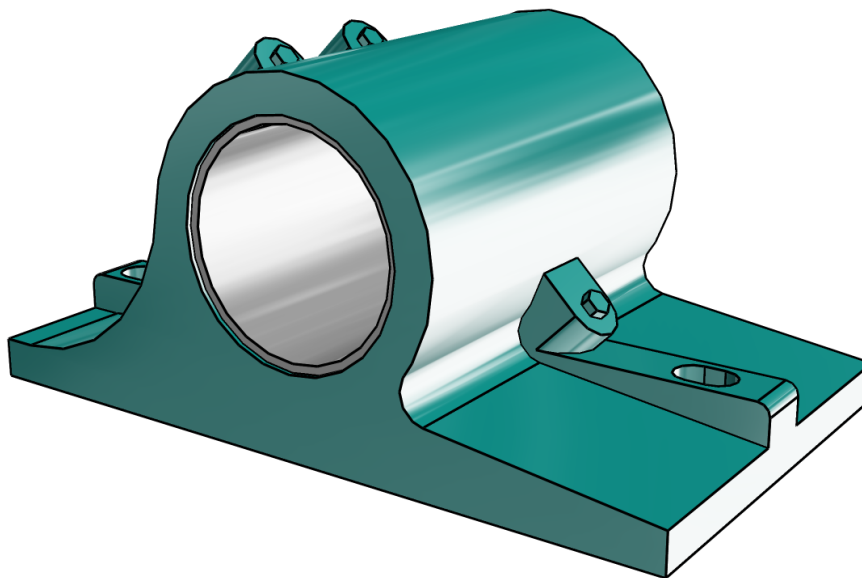
# 231126

Sleeve Bearings - Bronze - Bushed

**BALDOR • DODGE**

## 3D View

To activate the interactive 3D view, you must trust this document (see hint on the top) in Adobe Acrobat and click on the question mark.



### Zoom

Moves you toward or away from objects in the scene when you drag vertically. You can also zoom with the hand tool by holding down Shift as you drag.



### Pan

Moves the model vertically and horizontally only. You can also pan with the hand tool: Ctrl-drag.



### Rotate

Turns 3D objects around relative to the screen. How the objects move depends on the starting view, where you start dragging and the direction in which you drag.

## 3D PDF DATASHEET

Create Your Individual 3D PDF  
Datasheet



 **eCATALOG**solutions

Learn How to Create Your  
Mechanical Product Catalog



 **BIM** catalogs.net

Learn How to Create Your BIM  
Product Catalog



 **PART**solutions

Reduce Your Costs in  
Engineering and Purchasing

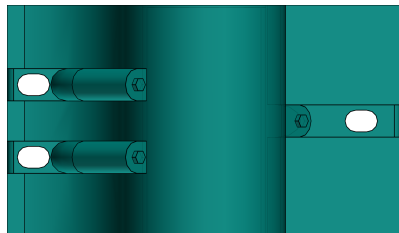
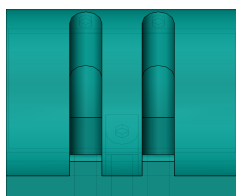
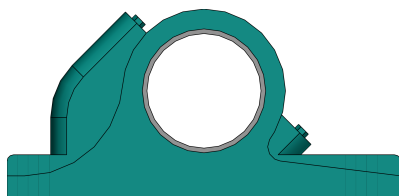


# 231126

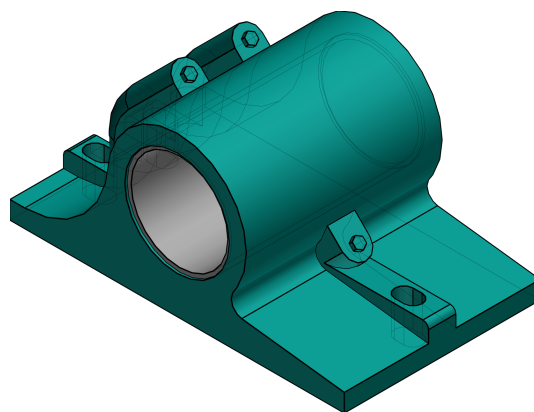
Sleeve Bearings - Bronze - Bushed

**BALDOR • DODGE**

### 2D Derivation



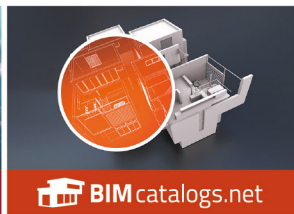
### ISO View



## 3D PDF DATASHEET



 **eCATALOG**solutions



 **BIM** catalogs.net



 **PART**solutions



Create Your Individual 3D PDF  
Datasheet



Learn How to Create Your  
Mechanical Product Catalog



Learn How to Create Your BIM  
Product Catalog



Reduce Your Costs in  
Engineering and Purchasing

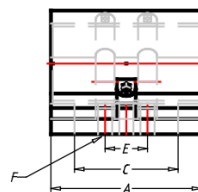
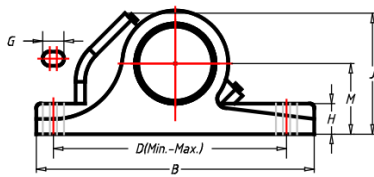


# 231126

Sleeve Bearings - Bronze - Bushed

**BALDOR • DODGE**

## Technical Drawings



## 3D PDF DATASHEET

Create Your Individual 3D PDF  
Datasheet



 **eCATALOG**solutions

Learn How to Create Your  
Mechanical Product Catalog



 **BIM**catalogs.net

Learn How to Create Your BIM  
Product Catalog



 **PART**solutions

Reduce Your Costs in  
Engineering and Purchasing



# 231126

Sleeve Bearings - Bronze - Bushed

**BALDOR • DODGE**

## Technical Data

SS (Shaft Size / INCH)	5-15/16
PN (Part Number)	231126
DESCRIPTION (Description)	P4B-BZA-515
WEIGHT (Weight / lbs)	180
UOF (Used On Frame)	HD-500
A (A / INCH)	12
B (B / INCH)	20-1/2
C (C / INCH)	8-1/2
DMIN (DMIN / INCH)	15-13/16
DMAX (DMAX / INCH)	17-3/16
E (E / INCH)	5
F (Bolt Diameter / INCH)	1-1/8
G (G / INCH)	1-7/8
H (H / INCH)	2-3/16
J (J / INCH)	11-1/16
M (M / INCH)	5-1/2
CBQ (Cap Bolts Quantity)	3
PT (Grease Cups - Pipe Tap / INCH)	1/2
NR (Grease Cups - No. Req'd / INCH)	2
GS (Grease Cups - Size / INCH)	3

## 3D PDF DATASHEET

Create Your Individual 3D PDF  
Datasheet



 **eCATALOG**solutions

Learn How to Create Your  
Mechanical Product Catalog



 **BIM** catalogs.net

Learn How to Create Your BIM  
Product Catalog



 **PART**solutions

Reduce Your Costs in  
Engineering and Purchasing



# 231126

Sleeve Bearings - Bronze - Bushed

**BALDOR • DODGE**

## Bill of Materials

N°	Name	Description	Amount
1	assembly	231126	1
1.1	p2b_bza_bodi	P4B-BZA-515	1
1.2	insert_bronzoil	19i	1