

PRODUCT INFORMATION PACKET



Model No: 985.654C
Catalog No: M1125214.00
...60:1.30RPM.100LBIN.1/17HP.30....12V..TENV.985.654C
PZ Series



Regal and Leeson are trademarks of Regal Beloit Corporation or one of its affiliated companies.
©2018 Regal Beloit Corporation, All Rights Reserved. MC017097E





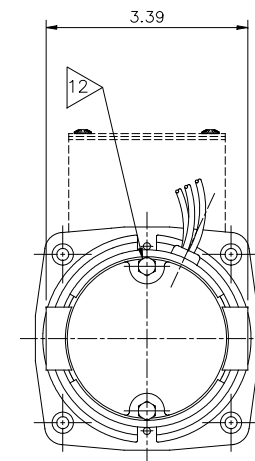
Nameplate Specifications

Output HP	0.06 Hp	Output KW	0.04 kW
Voltage	12 V	Current	5.2 A
Speed	30 rpm	Service Factor	1
Efficiency	59.4 %	Duty	Continuous
Insulation Class	F	Frame	30
Enclosure	Totally Enclosed Non Ventilated	Overload Protector	No
Ambient Temperature	40 °C	Drive End Bearing Size	6000
Opp Drive End Bearing Size	6000	UL	Recognized
CSA	Y	CE	N

Technical Specifications

Rotation	Reversible	Mounting	Special
Shaft Type	Parallel	Overall Length	8.74 in
Frame Length	2.99 in	Shaft Diameter	0.500 in
Shaft Extension	1 in		
Outline Drawing	M1030951-M1125214	Connection Diagram	M112521400FI

This is an uncontrolled document once printed or downloaded and is subject to change without notice. Date Created: 10/15/2018

3 of 4

1. HIPOT @ 1250 VOLTS FOR ONE SECOND, RED & BLACK LEADS TO CASE
2. RED LEAD POS (+)
- BLACK LEAD NEG (-)
3. RUN IN @ 12 VDC, 1.95 MAX AMPS, NO LOAD
4. TORQUE THRU BOLTS TO 20-25 LB. IN.
5. ALL MOTORS TO BE RUN-IN AT FREE-LOAD FOR 30 MINS. [REVERSING DIRECTION AT 15 MINUTES] AT 12±1 VDC.

CCWSE (MOTOR ONLY-SHAFT OUTPUT END)


CHECKS TO OUTLINE DRAWING

- A. LEAD LENGTH & STRIP
- B. SHAFT ROTATION (GEARBOX)
- C. LABEL CORRECT, POSITION (CRITICAL) & DATE CODE
- D. -
- E. PAINT - SMOOTH. COMPLETE & NO RUNS
- F. CONDUIT BOX SCREWS
- G. GEARBOX ID
- H. GEARBOX OIL PLUG TORQUE (24 LB. IN.)

PERFORMANCE SPECIFICATIONS

TORQUE	SPEED	MAX AMPS
0 LB. IN.	30-36	1.95
50 LB. IN.	28-34	3.85
100 LB. IN.	26-32	5.75

UL NUMBER: 985.654

04	NOTE 3: 1.95 WAS 1.48. ADDED PERF. SPECS. AT	SJB 6/16/2010		TOLERANCES UNLESS SPECIFIED		 ELECTRIC MOTORS GEARMOTORS AND DRIVES	DRAWN AD 1/29/01			
	0 LB-IN, 28-34 WAS 29-32, 3.85 WAS 3.62, 26-32			DEC.	INCHES		CHK			
	WAS 27-30, 5.75 WAS 5.70.			.X	±.1		APPD			
03	REMOVED KEY & RUBBER BAND/"D"OUT.CHKS. ECR83964	RPB 12/17/03	BC	.XX	±.01	TITLE FINAL INSPECTION 30 FRAME DC – PZ GEARBOX	SCALE 1=1			
02	CHG'D NOTE 5	JKM 11/8/02		.XXX	±.005		REF			
01	1.48 W .74; 29-32 WAS 30-33; 3.62 W 3.4; 5.70 W 5.8	AD 3/27/01		.XXXX	±.0005	MAT'L.	FMF			
NO.	REVISION	BY & DATE	CHK	ANG	±1/2"	FINISH	PREV			
THIS DRAWING IN DESIGN AND DETAIL IS OUR PROPERTY AND MUST NOT BE USED EXCEPT IN CONNECTION WITH OUR WORK ALL RIGHTS OF DESIGN AND INVENTION ARE RESERVED THIS IS AN ELECTRONICALLY GENERATED DOCUMENT – DO NOT SCALE THIS PRINT				RFP		CAD FILE M112521400FI		SIZE	DRAWING NO.	REV.
				DIST				A	M1125214.00FI	04