

PRODUCT INFORMATION PACKET

marathon[®]
Motors

Model No: 5KH37PNA479X
Catalog No: HG714
3/4,1725,DP,48Y,1/60/115/230
Carbonator Pump



Regal and Marathon are trademarks of Regal Beloit Corporation or one of its affiliated companies.
©2018 Regal Beloit Corporation, All Rights Reserved. MC017097E

REGAL



Nameplate Specifications

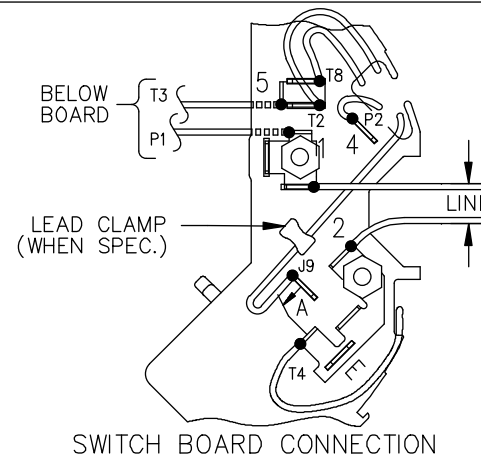
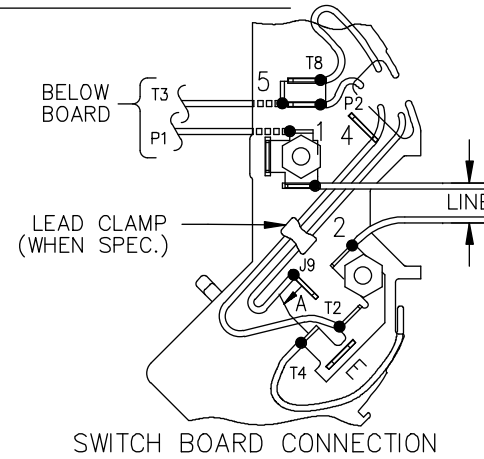
Output HP	0.75 Hp	Output KW	0.56 kW
Frequency	60 Hz	Voltage	115/230 V
Current	10.4,5.2 A	Speed	1725 rpm
Service Factor	1	Phase	1
Efficiency	68.3 %	Duty	CONT
Insulation Class	B	KVA Code	L
Frame	48Y	Enclosure	DP
Overload Protector	AUTO	Ambient Temperature	40 °C
Drive End Bearing Size	6203	Opp Drive End Bearing Size	6203
UL	Recognized	CSA	Yes
CE	N		

Technical Specifications

Electrical Type	Split Phase	Starting Method	SM
Poles	4	Rotation	CCW/CW
Mounting	RB	Motor Orientation	ANY
Drive End Bearing	BALL	Opp Drive End Bearing	BALL
Frame Material	Rolled Steel	Overall Length	9.15 in
Frame Length	6.62 in	Shaft Diameter	0.63 in
Shaft Extension	0.17 in		
Outline Drawing	52A111834P2	Connection Diagram	52A105383AA


This is an uncontrolled document once printed or downloaded and is subject to change without notice. Date Created: 04/05/2018

52A105383AA



NOTE #2 - TO REVERSE ROTATION, INTER CHANGE RD(T8) AND BLK(J9-KC OR T5-KH) LEADS.

CW ROTATION: NP52X332051AC

				TOLERANCES UNLESS SPECIFIED		 REGAL-BELOIT CORPORATION	DRAWN M.D.P 06/29/87				
				DEC.	INCHES		CHK				
				.X	±0.1		APPD M.D.P 03/26/96				
				.XX	±0.02	TITLE		CONNECTION DIAGRAM	SCALE	1=1	
5	ADDED CONNECTION LABEL PER ECO-0030779	UD 02/06/13	PKG	.XXX	±0.005			30 FRAME SWITCH REDESIGN	REF		
4	UPDATED PER ISO7-0150	MD 01/23/07		.XXXX	±0.0005	MAT'L.			FMF		
NO.	REVISION	BY & DATE	CHK	ANG	±1.0	FINISH			PREV		
THIS DRAWING IN DESIGN AND DETAIL IS OUR PROPERTY AND MUST NOT BE USED EXCEPT IN CONNECTION WITH OUR WORK ALL RIGHTS OF DESIGN AND INVENTION ARE RESERVED THIS IS AN ELECTRONICALLY GENERATED DOCUMENT - DO NOT SCALE THIS PRINT			RFP		CAD FILE		52A105383AA	SIZE	DRAWING NO.		REV.
			DIST					A	52A105383AA		5