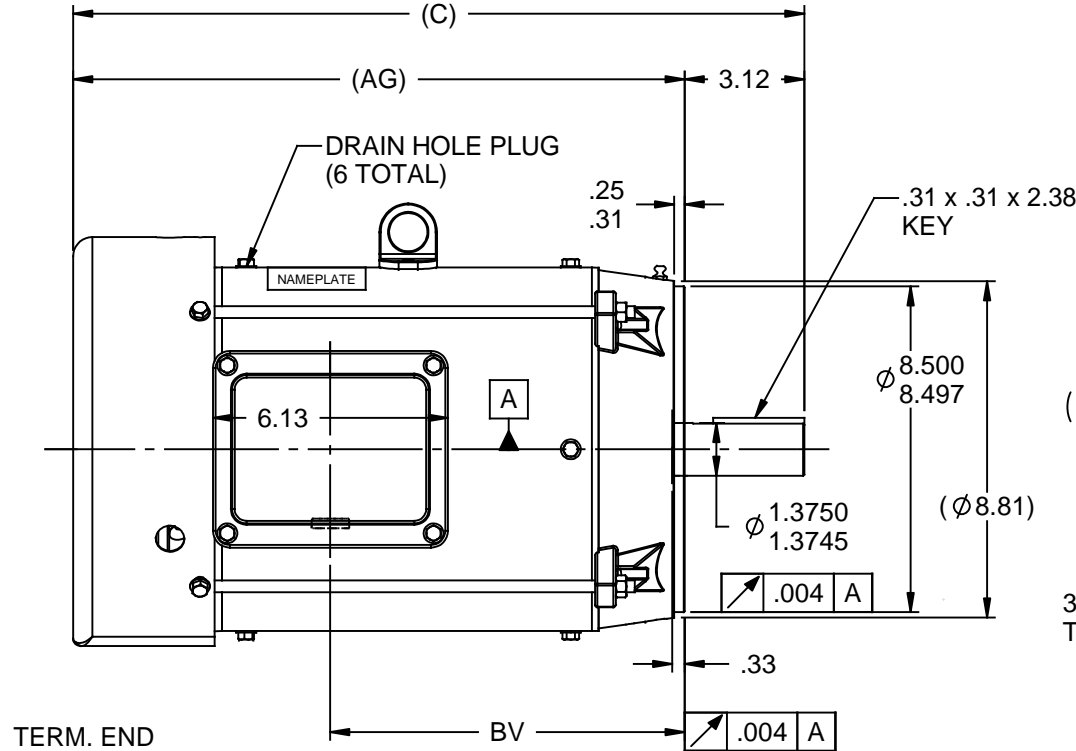



SS88922



DASH	FRAME	C	AG	BV	MOUNTING
965	213T	19.08	15.96	9.26	
1115	213/15T	20.58	17.46	10.76	
1240	213/15T	21.83	18.71	12.01	F1 ONLY

NOTES:

- 1- NAMEPLATE TO BE READ FROM C'BOX SIDE OF MOTOR.
- 2- C'BOX CAN BE MOUNTED ON OPPOSITE SIDE BY REMOVING BRACKETS AND TURNING FRAME 180° (EXCEPT AS NOTED).
- 3- DASH 965 TO BE READ FROM OPPOSITE SHAFT END.

				TOLERANCES UNLESS SPECIFIED				DRAWN SR 05/04/2011		
				DEC	INCHES			CHK SR 05/04/2011		
				.X	.1			APPR AK 05/04/2011		
				.XX	.03			SCALE 1:5		
				.XXX	.005			REF SS88922LE		
				.XXXX	.0005	TITLE OUTLINE		FMF		
						210 FR. - BB - TS - TEFC - R/S - C'FACE		PREV		
						MAT'L				
NO	REVISION	BY & DATE	CHK	ANG	7'30"	FINISH				
THIS DRAWING IN DESIGN AND DETAIL IS OUR PROPERTY AND MUST NOT BE USED EXCEPT IN CONNECTION WITH OUR WORK. ALL RIGHTS OF DESIGN AND INVENTION ARE RESERVED. THIS IS AN ELECTRONICALLY GENERATED DOCUMENT - DO NOT SCALE THIS PRINT			RFP		CAD FILE SS88922			SIZE	DRAWING NO	REV
			DIST LB - LE					A	SS88922	