

## SELECTION/DIMENSIONS

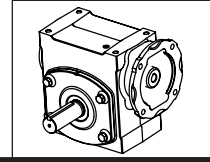
### TIGEAR-2 QUILL INPUT - SIZE 20

RATIO	OUTPUT RPM	RATING DATA 1750 INPUT RPM		PART NUMBER		SHAFT POSITION
				56C	140TC	
5	350	Mechanical Input Hp	3.47	20Q05L56	20Q05L14	L
		Thermal Input Hp	4.90	20Q05R56	20Q05R14	R
		Output Torque (lb in.)	581	20Q05LR56	20Q05LR14	LR
		Mechanical Output Hp	3.23	20Q05H56	20Q05H14	HOLLOW
		Output OHL (lbs.)	1380	20Q05HA56	20Q05HA14	HOLLOW ALT.
7.5	233	Mechanical Input Hp	2.78	20Q07L56	20Q07L14	L
		Thermal Input Hp	4.15	20Q07R56	20Q07R14	R
		Output Torque (lb in.)	678	20Q07LR56	20Q07LR14	LR
		Mechanical Output Hp	2.54	20Q07H56	20Q07H14	HOLLOW
		Output OHL (lbs.)	1560	20Q07HA56	20Q07HA14	HOLLOW ALT.
10	175	Mechanical Input Hp	2.25	20Q10L56	20Q10L14	L
		Thermal Input Hp	3.25	20Q10R56	20Q10R14	R
		Output Torque (lb in.)	725	20Q10LR56	20Q10LR14	LR
		Mechanical Output Hp	2.01	20Q10H56	20Q10H14	HOLLOW
		Output OHL (lbs.)	1560	20Q10HA56	20Q10HA14	HOLLOW ALT.
15	117	Mechanical Input Hp	1.69	20Q15L56	20Q15L14	L
		Thermal Input Hp	2.52	20Q15R56	20Q15R14	R
		Output Torque (lb in.)	790	20Q15LR56	20Q15LR14	LR
		Mechanical Output Hp	1.46	20Q15H56	20Q15H14	HOLLOW
		Output OHL (lbs.)	1560	20Q15HA56	20Q15HA14	HOLLOW ALT.
20	88	Mechanical Input Hp	1.34	20Q20L56	20Q20L14	L
		Thermal Input Hp	1.99	20Q20R56	20Q20R14	R
		Output Torque (lb in.)	796	20Q20LR56	20Q20LR14	LR
		Mechanical Output Hp	1.11	20Q20H56	20Q20H14	HOLLOW
		Output OHL (lbs.)	1560	20Q20HA56	20Q20HA14	HOLLOW ALT.
25	70	Mechanical Input Hp	1.11	20Q25L56	20Q25L14	L
		Thermal Input Hp	1.59	20Q25R56	20Q25R14	R
		Output Torque (lb in.)	788	20Q25LR56	20Q25LR14	LR
		Mechanical Output Hp	0.88	20Q25H56	20Q25H14	HOLLOW
		Output OHL (lbs.)	1560	20Q25HA56	20Q25HA14	HOLLOW ALT.
30	58	Mechanical Input Hp	0.96	20Q30L56		L
		Thermal Input Hp	1.49	20Q30R56		R
		Output Torque (lb in.)	802	20Q30LR56		LR
		Mechanical Output Hp	0.74	20Q30H56		HOLLOW
		Output OHL (lbs.)	1560	20Q30HA56		HOLLOW ALT.
40	44	Mechanical Input Hp	0.76	20Q40L56		L
		Thermal Input Hp	1.29	20Q40R56		R
		Output Torque (lb in.)	801	20Q40LR56		LR
		Mechanical Output Hp	0.56	20Q40H56		HOLLOW
		Output OHL (lbs.)	1560	20Q40HA56		HOLLOW ALT.
50	35	Mechanical Input Hp	0.64	20Q50L56		L
		Thermal Input Hp	1.09	20Q50R56		R
		Output Torque (lb in.)	787	20Q50LR56		LR
		Mechanical Output Hp	0.44	20Q50H56		HOLLOW
		Output OHL (lbs.)	1560	20Q50HA56		HOLLOW ALT.
60	29	Mechanical Input Hp	0.56	20Q60L56		L
		Thermal Input Hp	0.96	20Q60R56		R
		Output Torque (lb in.)	767	20Q60LR56		LR
		Mechanical Output Hp	0.36	20Q60H56		HOLLOW
		Output OHL (lbs.)	1560	20Q60HA56		HOLLOW ALT.

Note: Reducers are shipped without a mounting base. Order bolt-on base kit **20BASE** if required.

Refer to page 84 for hollow bore bushing selections.

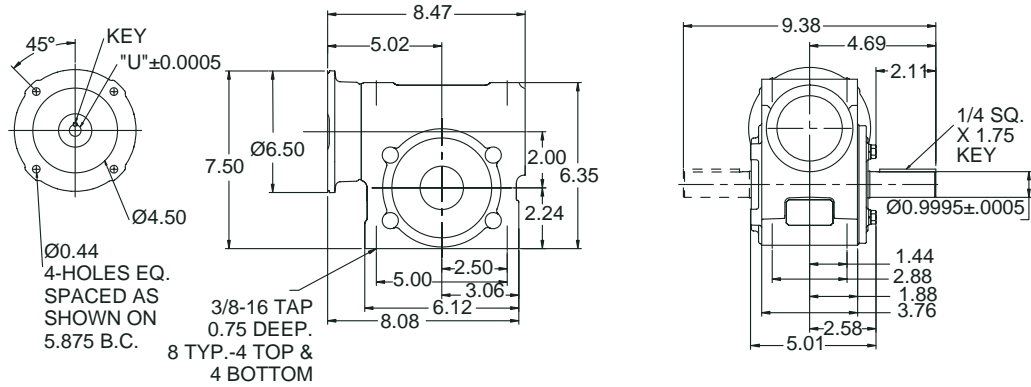
FEATURES/BENEFITS PAGE 3	SPECIFICATION PAGE 6	NOMENCLATURE PAGE 7	MODIFICATION / ACCESSORIES PAGE 78
-----------------------------	-------------------------	------------------------	---------------------------------------



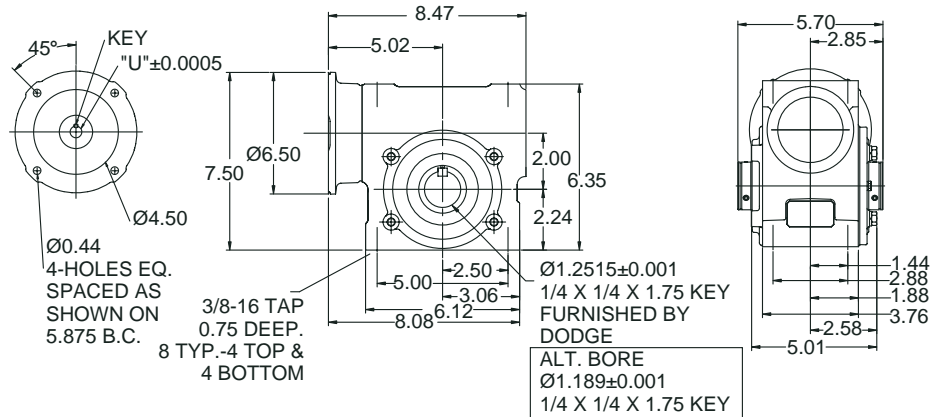
# SELECTION/DIMENSIONS

## TIGEAR-2 QUILL INPUT - SIZE 20

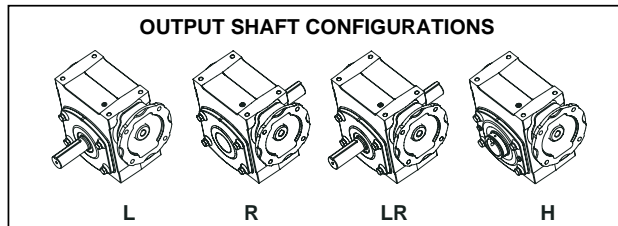
### SOLID OUTPUT



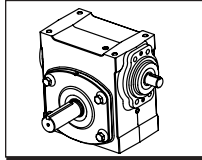
### HOLLOW OUTPUT



MOTOR FRAME	"U"	KEY
48Y 56C	.626	3/16 SQ. x 1.50 KEY
140TC 160ATC	.876	3/16 SQ x 1.50 KEY



FEATURES/BENEFITS PAGE 3	SPECIFICATION PAGE 6	NOMENCLATURE PAGE 7	MODIFICATION / ACCESSORIES PAGE 78
-----------------------------	-------------------------	------------------------	---------------------------------------



## SELECTION/DIMENSIONS

### TIGEAR-2 SEPARATE INPUT - SIZE 20

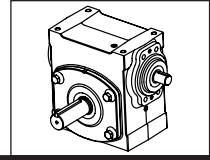
RATIO	OUTPUT RPM	RATING DATA 1750 INPUT RPM		SEPARATE REDUCER	SHAFT POSITION	OPTIONAL MOTOR ADAPTER KIT	
						56C	140TC
5	350	Mechanical Input Hp	3.47	20S05L	L	1720MTR56	1720MTR14
		Thermal Input Hp	4.90	20S05R	R		
		Output Torque (lb in.)	581	20S05LR	LR		
		Mechanical Output Hp	3.23	20S05H	HOLLOW		
		Output OHL (lbs.)	1380	20S05HA	HOLLOW ALT.		
7.5	233	Mechanical Input Hp	2.78	20S07L	L	1720MTR56	1720MTR14
		Thermal Input Hp	4.15	20S07R	R		
		Output Torque (lb in.)	678	20S07LR	LR		
		Mechanical Output Hp	2.54	20S07H	HOLLOW		
		Output OHL (lbs.)	1560	20S07HA	HOLLOW ALT.		
10	175	Mechanical Input Hp	2.25	20S10L	L	1720MTR56	1720MTR14
		Thermal Input Hp	3.25	20S10R	R		
		Output Torque (lb in.)	725	20S10LR	LR		
		Mechanical Output Hp	2.01	20S10H	HOLLOW		
		Output OHL (lbs.)	1560	20S10HA	HOLLOW ALT.		
15	117	Mechanical Input Hp	1.69	20S15L	L	1720MTR56	1720MTR14
		Thermal Input Hp	2.52	20S15R	R		
		Output Torque (lb in.)	790	20S15LR	LR		
		Mechanical Output Hp	1.46	20S15H	HOLLOW		
		Output OHL (lbs.)	1560	20S15HA	HOLLOW ALT.		
20	88	Mechanical Input Hp	1.34	20S20L	L	1720MTR56	1720MTR14
		Thermal Input Hp	1.99	20S20R	R		
		Output Torque (lb in.)	796	20S20LR	LR		
		Mechanical Output Hp	1.11	20S20H	HOLLOW		
		Output OHL (lbs.)	1560	20S20HA	HOLLOW ALT.		
25	70	Mechanical Input Hp	1.11	20S25L	L	1720MTR56	1720MTR14
		Thermal Input Hp	1.59	20S25R	R		
		Output Torque (lb in.)	788	20S25LR	LR		
		Mechanical Output Hp	0.88	20S25H	HOLLOW		
		Output OHL (lbs.)	1560	20S25HA	HOLLOW ALT.		
30	58	Mechanical Input Hp	0.96	20S30L	L	1720MTR56	
		Thermal Input Hp	1.49	20S30R	R		
		Output Torque (lb in.)	802	20S30LR	LR		
		Mechanical Output Hp	0.74	20S30H	HOLLOW		
		Output OHL (lbs.)	1560	20S30HA	HOLLOW ALT.		
40	44	Mechanical Input Hp	0.76	20S40L	L	1720MTR56	
		Thermal Input Hp	1.29	20S40R	R		
		Output Torque (lb in.)	801	20S40LR	LR		
		Mechanical Output Hp	0.56	20S40H	HOLLOW		
		Output OHL (lbs.)	1560	20S40HA	HOLLOW ALT.		
50	35	Mechanical Input Hp	0.64	20S50L	L	1720MTR56	
		Thermal Input Hp	1.09	20S50R	R		
		Output Torque (lb in.)	787	20S50LR	LR		
		Mechanical Output Hp	0.44	20S50H	HOLLOW		
		Output OHL (lbs.)	1560	20S50HA	HOLLOW ALT.		
60	29	Mechanical Input Hp	0.56	20S60L	L	1720MTR56	
		Thermal Input Hp	0.96	20S60R	R		
		Output Torque (lb in.)	767	20S60LR	LR		
		Mechanical Output Hp	0.36	20S60H	HOLLOW		
		Output OHL (lbs.)	1560	20S60HA	HOLLOW ALT.		
<b>All Ratios</b>		Input OHL (lbs)	200	One diameter from seal surface			

**Note:** TIGEAR-2 separate reducers cannot be used with the old Adaptable TIGEAR motor adapter kits.

Refer to page 84 for hollow bore bushing selections.

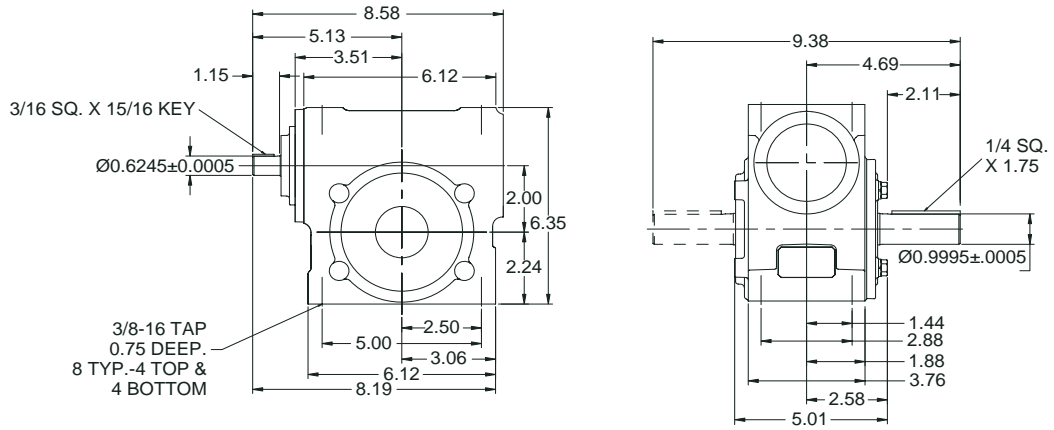
FEATURES/BENEFITS PAGE 3	SPECIFICATION PAGE 6	NOMENCLATURE PAGE 7	MODIFICATION / ACCESSORIES PAGE 78
-----------------------------	-------------------------	------------------------	---------------------------------------

# SELECTION/DIMENSIONS

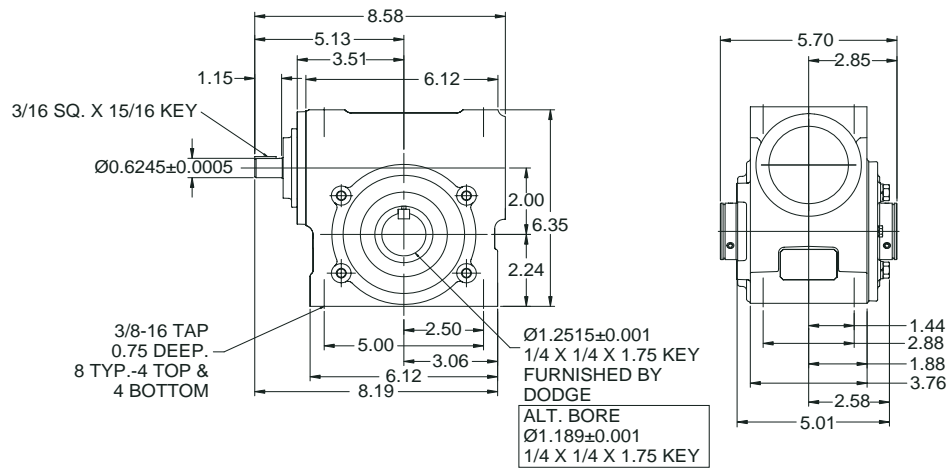


## TIGEAR-2 SEPARATE INPUT - SIZE 20

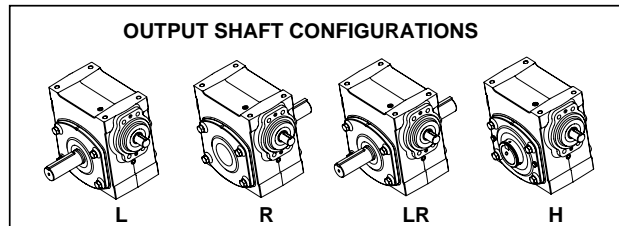
### SOLID OUTPUT



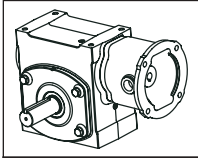
### HOLLOW OUTPUT



### OUTPUT SHAFT CONFIGURATIONS



FEATURES/BENEFITS PAGE 3	SPECIFICATION PAGE 6	NOMENCLATURE PAGE 7	MODIFICATION / ACCESSORIES PAGE 78
-----------------------------	-------------------------	------------------------	---------------------------------------



## SELECTION/DIMENSIONS

### TIGEAR-2 COUPLED INPUT - ADAPTER ASSEMBLY - SIZE 20

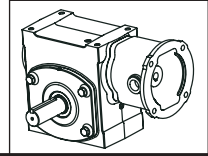
Coupled input units include a Separate reducer and motor adapter kit assembled together.  
These assemblies are normally "made to order" with a 5 day standard lead time.

RATIO	OUTPUT RPM	RATING DATA 1750 INPUT RPM		PART NUMBER		SHAFT POSITION
				56C	140TC	
5	350	Mechanical Input Hp	3.47	20A05L56	20A05L14	L
		Thermal Input Hp	4.90	20A05R56	20A05R14	R
		Output Torque (lb in.)	581	20A05LR56	20A05LR14	LR
		Mechanical Output Hp	3.23	20A05H56	20A05H14	HOLLOW
		Output OHL (lbs.)	1380	20A05HA56	20A05HA14	HOLLOW ALT.
7.5	233	Mechanical Input Hp	2.78	20A07L56	20A07L14	L
		Thermal Input Hp	4.15	20A07R56	20A07R14	R
		Output Torque (lb in.)	678	20A07LR56	20A07LR14	LR
		Mechanical Output Hp	2.54	20A07H56	20A07H14	HOLLOW
		Output OHL (lbs.)	1560	20A07HA56	20A07HA14	HOLLOW ALT.
10	175	Mechanical Input Hp	2.25	20A10L56	20A10L14	L
		Thermal Input Hp	3.25	20A10R56	20A10R14	R
		Output Torque (lb in.)	725	20A10LR56	20A10LR14	LR
		Mechanical Output Hp	2.01	20A10H56	20A10H14	HOLLOW
		Output OHL (lbs.)	1560	20A10HA56	20A10HA14	HOLLOW ALT.
15	117	Mechanical Input Hp	1.69	20A15L56	20A15L14	L
		Thermal Input Hp	2.52	20A15R56	20A15R14	R
		Output Torque (lb in.)	790	20A15LR56	20A15LR14	LR
		Mechanical Output Hp	1.46	20A15H56	20A15H14	HOLLOW
		Output OHL (lbs.)	1560	20A15HA56	20A15HA14	HOLLOW ALT.
20	88	Mechanical Input Hp	1.34	20A20L56	20A20L14	L
		Thermal Input Hp	1.99	20A20R56	20A20R14	R
		Output Torque (lb in.)	796	20A20LR56	20A20LR14	LR
		Mechanical Output Hp	1.11	20A20H56	20A20H14	HOLLOW
		Output OHL (lbs.)	1560	20A20HA56	20A20HA14	HOLLOW ALT.
25	70	Mechanical Input Hp	1.11	20A25L56	20A25L14	L
		Thermal Input Hp	1.59	20A25R56	20A25R14	R
		Output Torque (lb in.)	788	20A25LR56	20A25LR14	LR
		Mechanical Output Hp	0.88	20A25H56	20A25H14	HOLLOW
		Output OHL (lbs.)	1560	20A25HA56	20A25HA14	HOLLOW ALT.
30	58	Mechanical Input Hp	0.96	20A30L56		L
		Thermal Input Hp	1.49	20A30R56		R
		Output Torque (lb in.)	802	20A30LR56		LR
		Mechanical Output Hp	0.74	20A30H56		HOLLOW
		Output OHL (lbs.)	1560	20A30HA56		HOLLOW ALT.
40	44	Mechanical Input Hp	0.76	20A40L56		L
		Thermal Input Hp	1.29	20A40R56		R
		Output Torque (lb in.)	801	20A40LR56		LR
		Mechanical Output Hp	0.56	20A40H56		HOLLOW
		Output OHL (lbs.)	1560	20A40HA56		HOLLOW ALT.
50	35	Mechanical Input Hp	0.64	20A50L56		L
		Thermal Input Hp	1.09	20A50R56		R
		Output Torque (lb in.)	787	20A50LR56		LR
		Mechanical Output Hp	0.44	20A50H56		HOLLOW
		Output OHL (lbs.)	1560	20A50HA56		HOLLOW ALT.
60	29	Mechanical Input Hp	0.56	20A60L56		L
		Thermal Input Hp	0.96	20A60R56		R
		Output Torque (lb in.)	767	20A60LR56		LR
		Mechanical Output Hp	0.36	20A60H56		HOLLOW
		Output OHL (lbs.)	1560	20A60HA56		HOLLOW ALT.

**Note:** Reducers are shipped without a mounting base. Order bolt-on base kit **20BASE** if required.  
Refer to page 84 for hollow bore bushing selections.

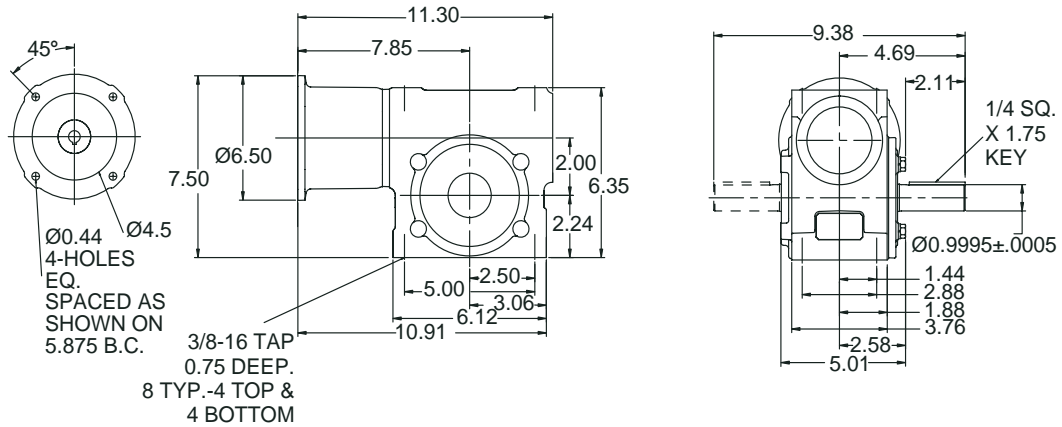
FEATURES/BENEFITS PAGE 3	SPECIFICATION PAGE 6	NOMENCLATURE PAGE 7	MODIFICATION / ACCESSORIES PAGE 78
-----------------------------	-------------------------	------------------------	---------------------------------------

# SELECTION/DIMENSIONS

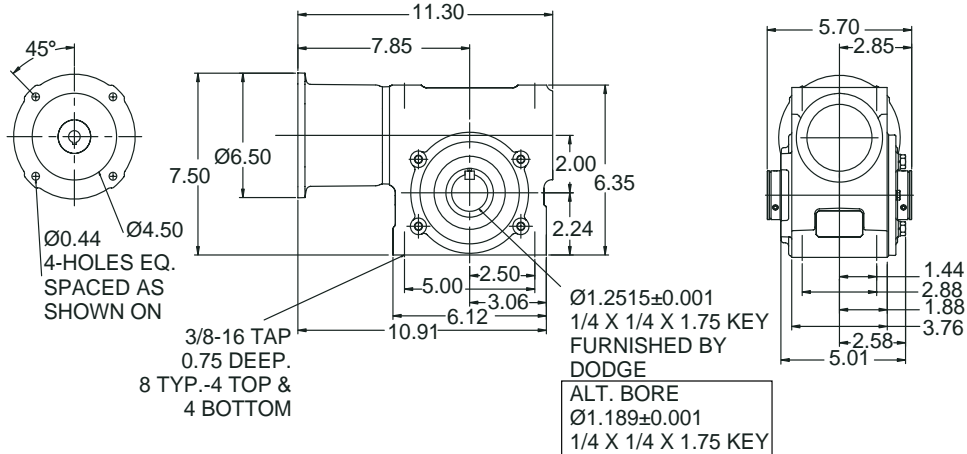


## TIGEAR-2 COUPLED INPUT - ADAPTER ASSEMBLY - SIZE 20

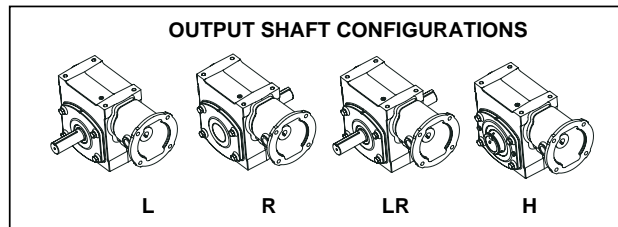
### SOLID OUTPUT



### HOLLOW OUTPUT



### OUTPUT SHAFT CONFIGURATIONS



FEATURES/BENEFITS PAGE 3	SPECIFICATION PAGE 6	NOMENCLATURE PAGE 7	MODIFICATION / ACCESSORIES PAGE 78
-----------------------------	-------------------------	------------------------	---------------------------------------