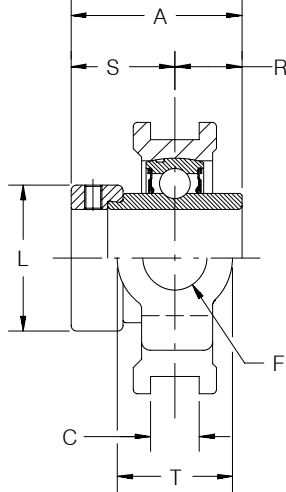
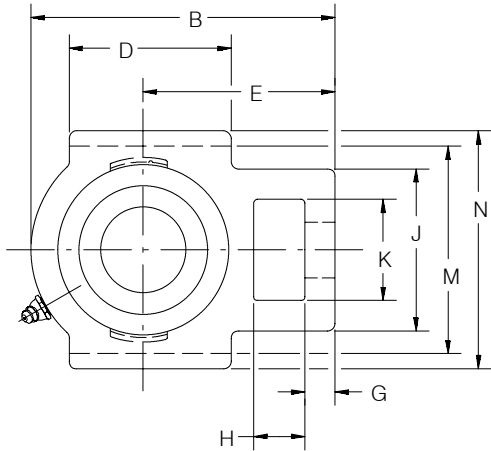


SELECTION/DIMENSIONS

Eccentric Collar Ball Bearings

SXR NORMAL DUTY WIDE SLOT TAKE-UP BEARINGS



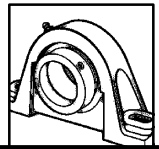
Series	Shaft Size	Part Number	Description
204	3/4 20mm	131204	WSTU-SXR-012
		130845	WSTU-SXR-20M
205	7/8 15/16 1 25mm	131206	WSTU-SXR-014
		131207	WSTU-SXR-015
		131208	WSTU-SXR-100
		130846	WSTU-SXR-25M
206	1-1/16 1-1/8 1-3/16 1-1/4 30mm	131209	WSTU-SXR-101
		131210	WSTU-SXR-102
		131211	WSTU-SXR-103
		@	WSTU-SXR-104S
		130847	WSTU-SXR-30M
207	1-1/4 1-5/16 1-3/8 1-7/16 35mm	131213	WSTU-SXR-104
		131214	WSTU-SXR-105
		131215	WSTU-SXR-106
		131216	WSTU-SXR-107
		130848	WSTU-SXR-35M
208	1-1/2 40mm	131217 130849	WSTU-SXR-108 WSTU-SXR-40M

Series	Shaft Size	Part Number	Description
209	1-5/8 1-11/16 1-3/4 45mm	131220	WSTU-SXR-110
		131221	WSTU-SXR-111
		131222	WSTU-SXR-112
		130850	WSTU-SXR-45M
210	1-15/16 2 50mm	131225	WSTU-SXR-115
		131227	WSTU-SXR-200
		130851	WSTU-SXR-50M
211	2 2-3/16 55mm	@	WSTU-SXR-200L
		131230	WSTU-SXR-203
		130852	WSTU-SXR-55M
212	2-1/4 2-7/16 60mm	131232	WSTU-SXR-204
		131235	WSTU-SXR-207
		130853	WSTU-SXR-60M
215	2-15/16 75mm	@ 130854	WSTU-SXR-215 WSTU-SXR-75M

@ Assembled to order. * + or - 0.015"

FEATURE/BENEFITS ECCENTRIC COLLAR BALL BRGS PAGE B3-2	HOW TO ORDER/ NOMENCLATURE PAGE B3-4	SELECTION PAGE B3-5	DIMENSIONS SXR INSERTS PAGE B3-70
-------------------------------------------------------------	--------------------------------------------	------------------------	-----------------------------------------

SELECTION/DIMENSIONS



Eccentric Collar Ball Bearings

SXR NORMAL DUTY WIDE SLOT TAKE-UP BEARINGS

Series	Shaft Size	G	H	J	K	L	M**	N	R	S	T
204	3/4 20mm	3/8 9.5	5/8 15.9	2 50.8	1-1/4 31.8	1-5/16 33.3	3 76.2	3-5/8 92.1	43/64 17.1	1-3/64 26.6	1-3/8 34.9
205	7/8 15/16 1 25mm	3/8 9.5	5/8 15.9	2 50.8	1-5/16 33.3	1-1/2 38.1	3 76.2	3-5/8 92.1	11/16 17.5	1-1/16 27.0	1-3/8 34.9
206	1-1/16 1-1/8 1-3/16 1-1/4 30mm	3/8 9.5	5/8 15.9	2-3/16 55.6	1-7/16 36.5	1-3/4 44.5	3-1/2 88.9	4-1/8 104.8	23/32 18.3	1-3/16 30.2	1-5/8 41.3
207	1-1/4 1-5/16 1-3/8 1-7/16 35mm	1/2 12.7	5/8 15.9	2-1/2 63.5	1-7/16 36.5	2-1/8 54.0	3-1/2 88.9	4-1/8 104.8	0.742 18.8	1.274 32.4	1-5/8 41.3
208	1-1/2 40mm	5/8 15.9	3/4 19.1	3-1/4 82.6	1-15/16 49.2	2-3/8 60.3	4 101.6	4-1/2 114.3	27/32 21.4	1-3/8 34.9	1-15/16 49.2
209	1-5/8 1-11/16 1-3/4 45mm	5/8 15.9	3/4 19.1	3-1/4 82.6	1-15/16 49.2	2-1/2 63.5	4 101.6	4-3/4 120.7	27/32 21.4	1-3/8 34.9	1-15/16 49.2
210	1-15/16 2 50mm	5/8 15.9	3/4 19.1	3-1/4 82.6	1-15/16 49.2	2-3/4 69.9	4 101.6	4-3/4 120.7	31/32 24.6	1-1/2 38.1	1-15/16 49.2
211	2 2-3/16 55mm	3/4 19.1	1 25.4	4 101.6	2-1/2 63.5	3 76.2	5-1/8 130.2	5-7/8 149.2	1-3/32 27.8	1-23/32 43.7	2-1/2 63.5
212	2-1/4 2-7/16 60mm	3/4 19.1	1-1/4 31.8	4 101.6	2-1/2 63.5	3-5/16 84.1	5-1/8 130.2	5-7/8 149.2	1-7/32 31.0	1-27/32 46.8	2-1/2 63.5
215	2-15/16 75mm	13/16 20.6	1-1/4 31.8	4-3/8 111.1	2-3/4 69.9	4 101.6	5-15/16 150.8	6-11/16 166.7	1-15/32 37.3	2-5/32 54.8	2-3/4 69.9

** -0.020 to +0.010"

MODIFICATIONS PAGE B3-74	RELATED PRODUCTS PAGE B3-75	SELECTION/DIMENSIONS WIDE SLOT TAKE-UP FRAMES PAGE B13-14	
-----------------------------	--------------------------------	-----------------------------------------------------------------	--