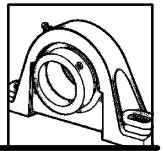
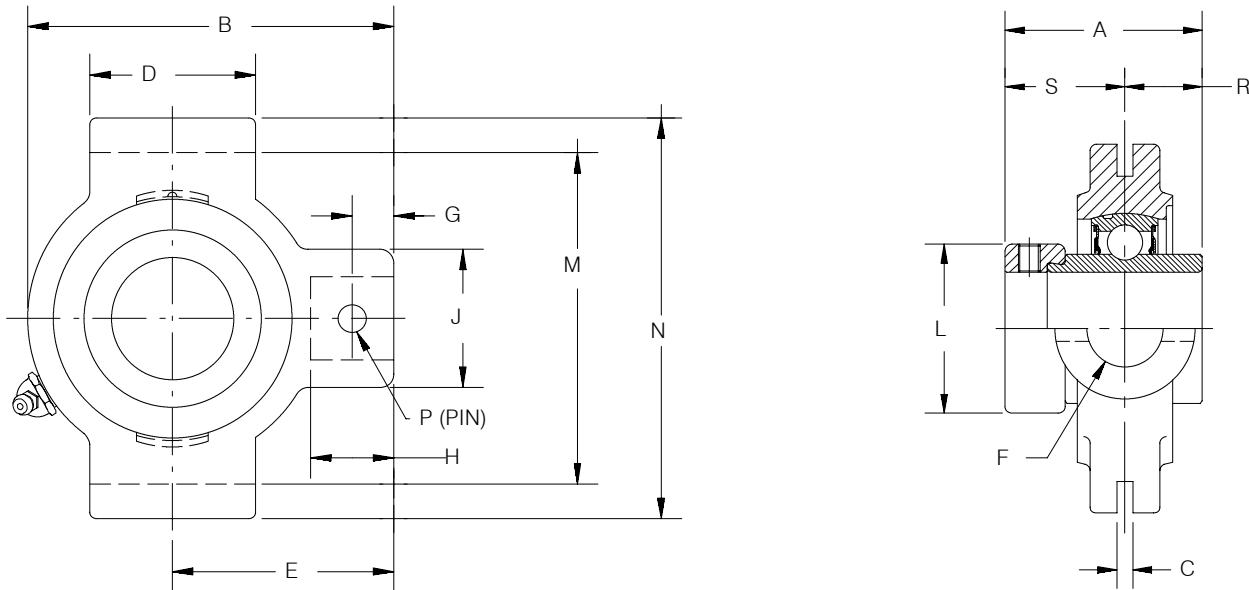


SELECTION/DIMENSIONS



Eccentric Collar Ball Bearings

SXR NORMAL DUTY NARROW SLOT TAKE-UP BEARINGS

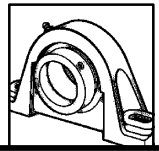


Series	Shaft Size	Part Number	Description
204	3/4	131154	NSTU-SXR-012
205	7/8	131156	NSTU-SXR-014
	15/16	131157	NSTU-SXR-015
	1	131158	NSTU-SXR-100
206	1-1/16	131159	NSTU-SXR-101
	1-1/8	131160	NSTU-SXR-102
	1-3/16	131161	NSTU-SXR-103
	1-1/4		
207	1-1/4	131163	NSTU-SXR-104
	1-5/16	131164	NSTU-SXR-105
	1-3/8	131165	NSTU-SXR-106
	1-7/16	131166	NSTU-SXR-107
208	1-1/2	131167	NSTU-SXR-108
209	1-5/8	131170	NSTU-SXR-110
	1-11/16	131171	NSTU-SXR-111
	1-3/4	131172	NSTU-SXR-112
210	1-15/16	131175	NSTU-SXR-115
	2	131177	NSTU-SXR-200
211	2	@	NSTU-SXR-200L
	2-3/16	131180	NSTU-SXR-203
212	2-1/4	131182	NSTU-SXR-204
	2-7/16	131185	NSTU-SXR-207

@ Assembled to order.

FEATURE/BENEFITS ECCENTRIC COLLAR BALL BRGS PAGE B3-2	HOW TO ORDER/ NOMENCLATURE PAGE B3-4	SELECTION PAGE B3-5	DIMENSIONS SXR INSERTS PAGE B3-70
---	--	------------------------	---

SELECTION/DIMENSIONS



Eccentric Collar Ball Bearings

SXR NORMAL DUTY NARROW SLOT TAKE-UP BEARINGS

Series	Shaft Size	Weight lbs.	Take-Up Frame No. Ref.	A	B	C*	D	E	F Screw Dia.	G
204	3/4	1.5	NS210	1-23/32	3-1/2	1/4	1-1/2	2-3/16	3/4	7/16
205	7/8	1.7	NS210	1-3/4	3-9/16	1/4	1-1/2	2-3/16	3/4	7/16
	15/16	1.6								
206	1	1.5	NS308	1-29/32	4-5/16	1/4	2-1/2	2-11/16	3/4	1/2
	1-1/16	2.9								
	1-1/8	2.8								
	1-3/16	2.6								
207	1-1/4	3.0	NS308	2-1/64	4-1/2	1/4	2-1/2	2-11/16	3/4	1/2
	1-5/16	2.8								
	1-3/8	2.7								
	1-7/16	2.5								
208	1-1/2	5.0	NS400	2-7/32	5-3/8	5/16	3	3-1/4	7/8	21/32
209	1-5/8	5.4	NS400	2-7/32	5-7/16	5/16	3	3-1/4	7/8	23/32
	1-11/16	5.2								
	1-3/4	5.0								
210	1-15/16	5.7	NS400	2-15/32	5-1/2	5/16	3	3-1/4	7/8	21/32
	2	5.3								
211	2	7.4	NS407	2-13/16	6-1/8	5/16	3-1/2	3-5/8	1	11/16
	2-3/16	7.2								
212	2-1/4	10.0	NS415	3-1/16	6-11/16	5/16	3-3/4	3-7/8	1	11/16
	2-7/16	9.0								

* + or - 0.015"

Series	Shaft Size	H	J	L	M**	N	P Pin Dia.	R	S
204	3/4	7/8	1-3/8	1-5/16	2-5/8	3-1/8	5/16	43/64	1-3/64
205	7/8	7/8	1-3/8	1-1/2	2-5/8	3-1/8	5/16	11/16	1-1/16
	15/16								
206	1	15/16	1-3/8	1-3/4	3-1/2	4-1/8	5/16	23/32	1-3/16
	1-1/16								
	1-1/4								
	1-1/8								
207	1-3/16	15/16	1-3/8	2-1/8	3-1/2	4-1/8	5/16	0.742	1.274
	1-1/4								
	1-5/16								
	1-3/8								
208	1-1/2	1-5/32	1-5/8	2-3/8	4	4-3/4	3/8	27/32	1-3/8
209	1-5/8	1-7/32	1-5/8	2-1/2	4	4-3/4	3/8	27/32	1-3/8
	1-11/16								
	1-3/4								
210	1-15/16	1-5/32	1-5/8	2-3/4	4	4-3/4	3/8	31/32	1-1/2
	2								
211	2	1-9/32	1-3/4	3	4-7/16	5-3/8	7/16	1-3/32	1-23/32
	2-3/16								
212	2-1/4	1-9/32	1-5/8	3-5/16	4-15/16	5-3/4	7/16	1-7/32	1-27/32
	2-7/16								

** -0.020 to +0.010"

MODIFICATIONS PAGE B3-74	RELATED PRODUCTS PAGE B3-75	SELECTION/DIMENSIONS NARROW SLOT TAKE-UP FRAMES PAGE B13-8	
-----------------------------	--------------------------------	--	--