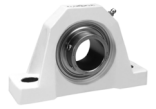


HOW TO ORDER/ NOMENCLATURE

E-Z KLEEN Polymer and Stainless Steel Housed Mounted Bearings

HOW TO ORDER

There are two ways to specify DODGE polymer-housed ball bearings. Most of the product offerings have part numbers with listings shown throughout this brochure. Use of part numbers ensures accurate order processing.

When part numbers are not shown, the product may be specified by description or part name. This method is used when ordering units that include modifications or options. To order by description for options not covered by the nomenclature.

NOMENCLATURE

P2B - SCUEZ - 104S - PCR

Modification Or Feature:

- CR = Corrosion resistant insert
- LL = Low torque labyrinth seal
- MOD = Modified
- NL = No Lube (sealed for life)
- P = Polymer housing
- SH = Stainless Steel Housing

Shaft Size

Inches:

- First digit = Number of inches
- Second & third digits = Number of sixteenths of an inch
- 104 = Indicates 1-4/16 or 1-1/4
- S = Next smaller ring size. E.g. 1-1/4 206 would be written as 104S
- L = Next larger ring size. E.g. 1/2 204 would be written as 008L

Metric:

- First two digits = number of millimeters
- M = Metric

Bearing Type:

- SC = Wide inner ring, normal duty, 65o setscrew locking
- DL = Wide inner ring, normal duty, concentric clamp collar
- GT = Wide inner ring, normal duty, thin wall adapter locking
- PS = Polymer Sleeve Insert

Suffixes to the above:

- EZ = EZ-KLEEN (used with polymer or stainless steel housed units)
- BEZ = Low backing height pillow block, EZ-KLEEN"
- UEZ = higher back pillow block, EZ-KLEEN (for interchangeability with competitive pillow blocks)

Housing:

- F2B = 2 bolt flange
- F4B = 4 bolt flange
- FB = Flanged bracket
- INS = Insert
- P2B = Pillow block, 2 bolt base
- TB = Tapped base pillow block
- WSTU = Wide slot take-up

FEATURES/BENEFITS PAGE B1-2	SELECTION PAGE B1-5	DIMENSIONS PAGE B1-14	INTERCHANGE PAGE B1-88
--------------------------------	------------------------	--------------------------	---------------------------