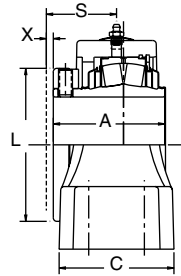
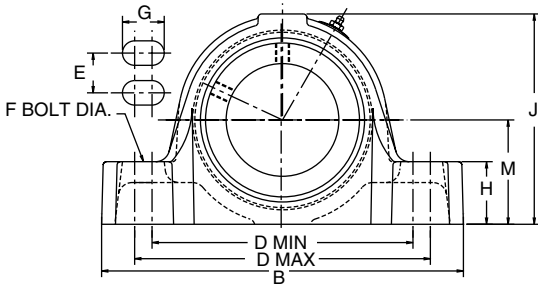


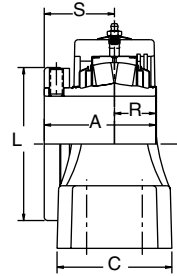
# DIMENSIONS

## S-2000 Pillow Block 4-BOLT BASE



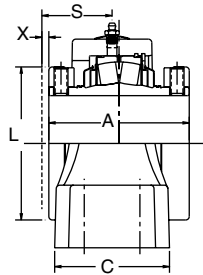
1-15/16 TRU 3-15/16"  
CONSTRUCTION

EXPANSION



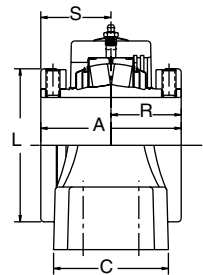
1-15/16 TRU 3-15/16"  
CONSTRUCTION

NON-EXPANSION



4-7/16 THRU 4-15/16"  
CONSTRUCTION

EXPANSION



4-7/16 THRU 4-15/16"  
CONSTRUCTION

NON-EXPANSION

S-2000 FEATURES/BENEFITS PAGE 2	S-2000 HOW TO ORDER PAGE 5	S-2000 NOMENCLATURE PAGE 6	S-2000 SELECTION PAGE 7
------------------------------------	-------------------------------	-------------------------------	----------------------------



# DIMENSIONS

## S-2000 Pillow Block 4-BOLT BASE

Bearing	Shaft Size Inch	TRIDENT Seal				Labyrinth Seal			
		Non-Expansion		Expansion		Non-Expansion		Expansion	
		Part No.	Part Name	Part No.	Part Name	Part No.	Part Name	Part No.	Part Name
22210	1-15/16 2	070361	P4B-S2-115R	070379	P4B-S2-115RE	070397	P4B-S2-115L	070415	P4B-S2-115LE
		070362	P4B-S2-200R	070380	P4B-S2-200RE	070398	P4B-S2-200L	070416	P4B-S2-200LE
22211	2-3/16	070363	P4B-S2-203R	070381	P4B-S2-203RE	070399	P4B-S2-203L	070417	P4B-S2-203LE
22213	2-7/16	070365	P4B-S2-207R	070383	P4B-S2-207RE	070401	P4B-S2-207L	070419	P4B-S2-207LE
22215	2-11/16	070367	P4B-S2-211R	070385	P4B-S2-211RE	070403	P4B-S2-211L	070421	P4B-S2-211LE
	2-15/16	070368	P4B-S2-215R	070386	P4B-S2-215RE	070404	P4B-S2-215L	070422	P4B-S2-215LE
	3	070369	P4B-S2-300R	070387	P4B-S2-300RE	070405	P4B-S2-300L	070423	P4B-S2-300LE
22218	3-7/16	070371	P4B-S2-307R	070389	P4B-S2-307RE	070407	P4B-S2-307L	070425	P4B-S2-307LE
22220	3-15/16	070373	P4B-S2-315R	070391	P4B-S2-315RE	070409	P4B-S2-315L	070427	P4B-S2-315LE
22222	4-7/16	070375	P4B-S2-407R	070393	P4B-S2-407RE	070411	P4B-S2-407L	070429	P4B-S2-407LE
22226	4-15/16	070377	P4B-S2-415R	070395	P4B-S2-415RE	070413	P4B-S2-415L	070431	P4B-S2-415LE

SHAFT SIZE	A	B	C	D		E	F BOLT DIA.	G	H	J	L	M	R	S	X TOTAL EXP.
				MIN	MAX										
1-15/16 2	2-27/32	8	3-3/16	6-1/16	6-7/16	1-19/32	1/2	13/16	1-5/16	4-9/16	3-7/16	2-1/4	27/32	2	1/4
2-3/16	2-15/16	8-7/8	3-1/4	6-9/16	6-15/16	1-11/16	1/2	13/16	1-1/2	5	3-3/4	2-1/2	29/32	2-1/32	1/4
2-7/16	3-13/64	9-1/4	3-3/8	6-15/16	7-5/16	1-3/4	1/2	13/16	1-5/8	5-19/32	4-1/16	2-3/4	1-13/64	2	1/4
2-11/16	3-19/32	10-7/16	3-3/4	7-15/16	8-5/16	1-7/8	5/8	15/16	1-7/8	6-7/16	4-45/64	3-1/4	1-15/64	2-23/64	1/4
2-15/16 3															
3-7/16	4	13	4-1/8	9-3/8	10-5/8	2	3/4	1-1/2	2-1/4	7-9/16	5-1/2	3-3/4	1-31/64	2-33/64	1/4
3-15/16	4-15/32	15-1/4	4-1/2	12-1/8	12-7/8	2-1/4	3/4	1-1/4	2-7/16	8-7/16	6	4-1/4	1-41/64	2-53/64	5/16
4-7/16	6-17/32	16-1/2	4-3/4	13	14	2-1/2	3/4	1-3/8	2-3/4	9-5/8	6-29/64	4-3/4	3-5/64	3-29/64	3/8
4-15/16	6-29/32	18-5/8	5-3/8	15	16	2-3/4	7/8	1-1/2	3	11-1/8	7-29/64	5-1/2	3-17/64	3-41/64	3/8

**NOTE:** All sizes use a 1/8-27 NPT hydraulic grease fitting

S-2000 FEATURES/BENEFITS PAGE 2	S-2000 HOW TO ORDER PAGE 5	S-2000 NOMENCLATURE PAGE 6	S-2000 SELECTION PAGE 7
------------------------------------	-------------------------------	-------------------------------	----------------------------