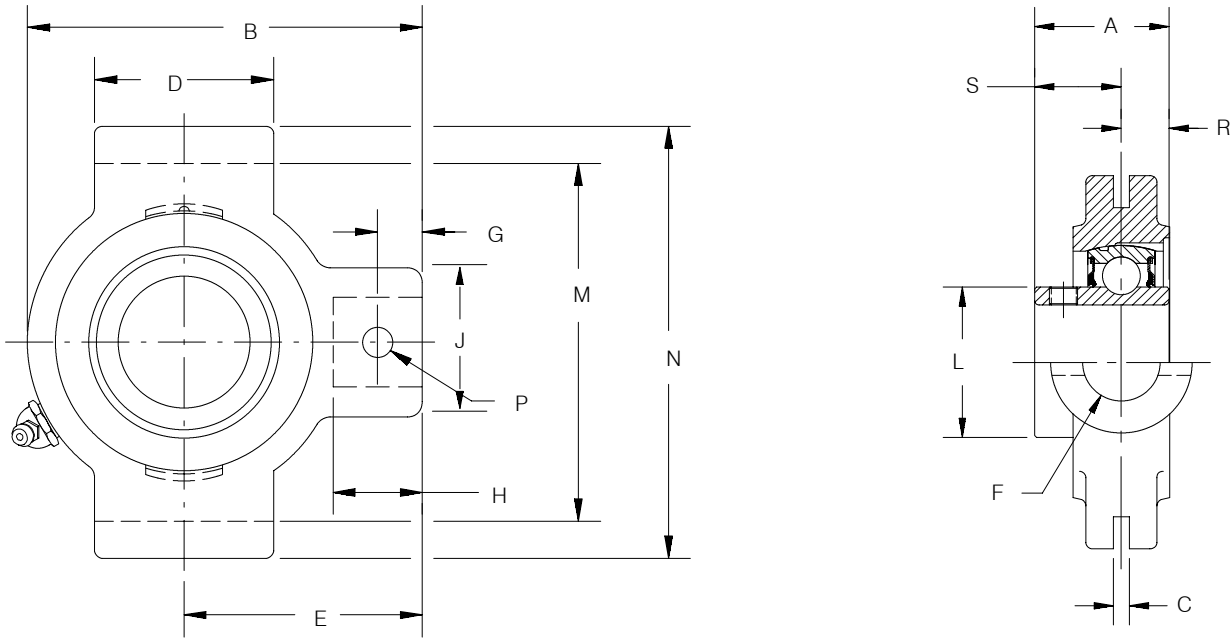


SELECTION/DIMENSIONS

Setscrew Ball Bearings

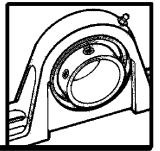
VSC INTERMEDIATE DUTY NARROW SLOT TAKE-UP BEARINGS



Series	Shaft Size	Part Number	Description
204	3/4	125533	NSTU-VSC-012
205	7/8 15/16 1	125534	NSTU-VSC-014
		125535	NSTU-VSC-015
		125536	NSTU-VSC-100
206	1-1/8 1-3/16 1-1/4	125537	NSTU-VSC-102
		125538	NSTU-VSC-103
		125540	NSTU-VSC-104S
207	1-1/4 1-3/8 1-7/16	125539	NSTU-VSC-104
		125541	NSTU-VSC-106
		123680	NSTU-VSC-107
208	1-1/2	125542	NSTU-VSC-108
209	1-11/16 1-3/4	125543	NSTU-VSC-111
		125544	NSTU-VSC-112
210	1-15/16 2	125545	NSTU-VSC-115
		125546	NSTU-VSC-200
211	2 2-3/16	125547	NSTU-VSC-200L
		125548	NSTU-VSC-203

FEATURE/BENEFITS SETScrew BALL BEARINGS PAGE B2-2	HOW TO ORDER/ NOMENCLATURE PAGE B2-4	SELECTION PAGE B2-5	DIMENSIONS VSC INSERTS PAGE B2-116
---	--	------------------------	--

SELECTION/DIMENSIONS



Setscrew Ball Bearings

VSC INTERMEDIATE DUTY NARROW SLOT TAKE-UP BEARINGS

Series	Shaft Size	Weight lbs.	Take-Up Frame No. Ref.	A	B	C*	D	E	F Screw Dia.	G
204	3/4	1.25	NS210	1-1/16	3-1/2	1/4	1-1/2	2-3/16	3/4	7/16
205	7/8 15/16 1	1.68 1.58 1.48	NS210	1-3/32	3-9/16	1/4	1-1/2	2-3/16	3/4	7/16
206	1-1/8 1-3/16 1-1/4	2.78 2.58 2.48	NS308	1-19/64	4-5/16	1/4	2-1/2	2-11/16	3/4	1/2
207	1-1/4 1-3/8 1-7/16	2.78 2.58 2.48	NS308	1-7/16	4-1/2	1/4	2-1/2	2-11/16	3/4	1/2
208	1-1/2	4.68	NS400	1-9/16	5-3/8	5/16	3	3-1/4	7/8	21/32
209	1-11/16 1-3/4	4.78 4.68	NS400	1-19/32	5-7/16	5/16	3	3-1/4	7/8	23/32
210	1-15/16 2	4.88 4.78	NS400	1-5/8	5-1/2	5/16	3	3-1/4	7/8	21/32
211	2 2-3/16	6.78 6.58	NS407	1-23/32	6-1/8	5/16	3-1/2	3-5/8	1	11/16

* + or -.015"

Series	Shaft Size	H	J	L	M#	N	P Pin Dia.	R	S
204	3/4	7/8	1-3/8	1-1/8	2-5/8	3-1/8	5/16	21/64	47/64
205	7/8 15/16 1	7/8	1-3/8	1-21/64	2-5/8	3-1/8	5/16	21/64	49/64
206	1-1/8 1-3/16 1-1/4	15/16	1-3/8	1-37/64	3-1/2	4-1/8	5/16	25/64	29/32
207	1-1/4 1-3/8 1-7/16	15/16	1-3/8	1-27/32	3-1/2	4-1/8	5/16	13/32	1-1/32
208	1-1/2	1-5/32	1-5/8	2-3/64	4	4-3/4	3/8	15/32	1-3/32
209	1-11/16 1-3/4	1-7/32	1-5/8	2-7/32	4	4-3/4	3/8	15/32	1-1/8
210	1-15/16 2	1-7/32	1-5/8	2-7/16	4	4-3/4	3/8	15/32	1-5/32
211	2 2-3/16	1-9/32	1-3/4	2-23/32	4-7/16	5-3/8	7/16	1/2	1-7/32

-+/010. -.020"

MODIFICATIONS PAGE B2-119	RELATED PRODUCTS PAGE B2-43	SELECTION/DIMENSIONS NARROW SLOT TAKE-UP FRAMES PAGE B13-8	
------------------------------	--------------------------------	--	--